

Converting Colors

Decimal(16460125)

Have a look what the booklet for
Decimal(16460125) contains.

Decimal(16460125)	3
<i>Conversions</i>	4
<i>Details</i>	6
<i>Harmonies</i>	11
<i>Previews</i>	23
<i>Color Blindness Simulation</i>	26
<i>CSS Examples</i>	29

Color

Decimal(16460125)

Conversions

Conversions Part 1

Format	Color
Hex	FB295D
RGB	251, 41, 93
RGB Percent	98%, 16%, 36%
CMY	0.0157, 0.8392, 0.6353
CMYK	0.00, 0.84, 0.63, 0.02
HSL	345°, 96%, 57%
HSV	345°, 84%, 98%
XYZ	42.5524, 22.8854, 12.5305
YIQ	109.7180, 108.4680, 60.6920

Conversions

Conversions Part 2

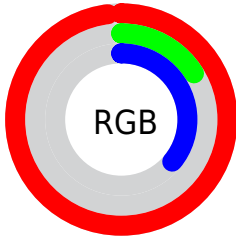
Format	Color
R_{YB}	251, 41, 93
Decimal	16460125
CIE Lab	54.95, 76.66, 25.05
CIE LCh	55, 80.653, 18.097
Yxy	22.8854, 0.5458, 0.2935
Android (android.graphics.Color)	4294650205 (0xFFFB295D)
YUV	109.7180, -8.2420, 123.9043
Hunter-Lab	47.8387, 75.0575, 17.9571

Details

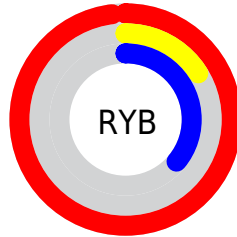
The Decimal color **16460125** is a dark color, and the websafe version is hex **FF3366**. The color can be described as dark washed red. A complement of this color would be **2751431**, and the grayscale version is **7237230**.

A 20% lighter version of the original color is **16740239**, and **12189744** is the 20% darker color. If you saturate the color by 10%, you get **16453706**, and if you desaturate by 10%, it is **16466544**.

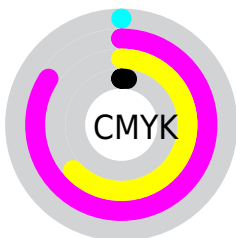
Distribution



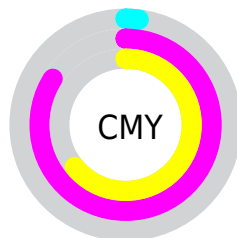
- Red (98%)
- Green (16%)
- Blue (36%)



- Red (98%)
- Yellow (16%)
- Blue (36%)



- Cyan (0%)
- Magenta (84%)
- Yellow (63%)
- Black (2%)



- Cyan (2%)
- Magenta (84%)
- Yellow (64%)

Brightness & Saturation Gradients

These gradients show how the Decimal color 16460125 changes by changing the brightness by 10 percent. The first figure shows a shift by +10% for each color and the second figure -10%.

Similar to the brightness gradients but the following saturation gradients show a change of the Decimal color 16460125 by changing the saturation by 10% instead.

 16460125

 16460125

16777215

 14352454

 16740239

 12189744

 16747945

 10158108

 16755652

 8060930

 16763360

 6029315

 16771325

 3997699

 1572865

 0

 16460125

 16460125

■ 16453706

■ 16466544

■ 16449598

■ 16472963

■ 16479382

■ 16485801

■ 16492219

■ 16498894

■ 16505313

■ 16511732

■ 16515071

Harmonies

Analogous

The Analogous color harmony consists of three colors that are next to each other on the color wheel.



15740066



16460125



14963734

Triad

The Triadic color harmony groups three colors that are evenly spaced from another and form a triangle on the color wheel.



16460125



39441



38143

Complementary

The Complementary color scheme is a pair of colors which are on the opposite of each other on the color wheel.



16460125



2751431

Split Complementary

Split-complementary colors differ from the complementary color scheme. The scheme consists of three colors, the original color and two neighbors of the complement color.



40939



16460125



41060

Square

The Square scheme is like the rectangle color scheme, but the four colors are evenly spaced on the color wheel.



16460125



7900416



41389



1212159

Rectangle

The Rectangle color scheme consists of four colors that form a rectangle on the color wheel.



16460125



13134848



41389



39423

Sweetspot

The Sweet Spot groups the original color and five complimentary colors.



16460125



16760783



12986875



8411491



0



8421504

Same Dimension

The Same Dimension uses a secret algorithm to generate beautiful new colors.



16460125



16711743



16473641



8220788



12386351



3997711

Inverse Universe

The Inverse Universe completely reimagines the original color for something new.



16460125



16711743



2737915



8220788



12386351



3997711

Previews

White Background



This preview shows how the Decimal color 16460125 looks on a white background.

Color Contrast Check

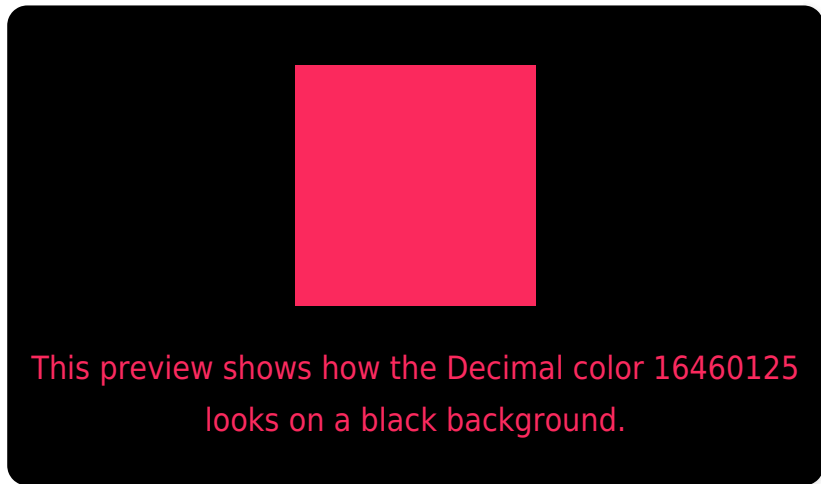
Large Text (above 18pt) WCAG AA ✓ Pass

Any Text WCAG AA × Fail

Large Text (above 18pt) WCAG AAA × Fail

Any Text WCAG AAA × Fail

Black Background



Color Contrast Check

Large Text (above 18pt) WCAG AA ✓ Pass

Any Text WCAG AA ✓ Pass

Large Text (above 18pt) WCAG AAA ✓ Pass

Any Text WCAG AAA × Fail

If you want to check with other color combinations, try the [Color Contrast Checker](#).

Decimal 16460125 Background



This preview shows how black text looks on a background with the Decimal color 16460125.



This preview shows how white text looks on a background with the Decimal color 16460125.

Color Blindness Simulation

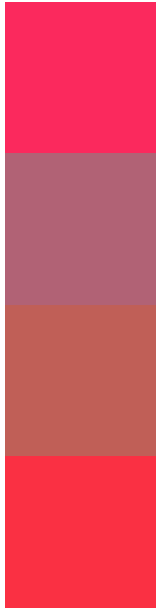
Color vision deficiency is a very complex topic, and I could not describe the different causes any better than Wikipedia does, so if you want to learn more, you should check out their [article about color blindness](#).

Dichromacy





Trichromacy



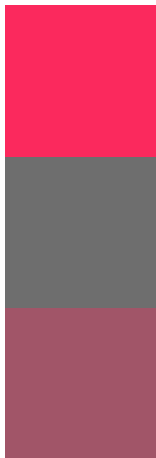
Original Color
16460125

Protanomaly
11625077

Deuteranomaly
12607319

Tritanomaly
16396355

Monochromacy



Original Color
16460125

Achromatopsia
7237230

Achromatomaly
10573160

CSS Examples

Text

The CSS property to change the color of the text to Decimal 16460125 is called "color". The color property can be set on classes, ids or directly on the HTML element.

This example shows how text in the color #FB295D looks like.

```
.text, #text, p{  
  color:#FB295D  
}
```

If you want to add a text shadow in that color use the text-shadow property, you can generate a text shadow directly with our [CSS Text Shadow Generator](#).

Here you see how black text with a 4 pixel #FB295D colored shadow looks like.

```
.shadow{ text-shadow: 4px 4px 2px #FB295D
}
```

Border

The CSS property to change the border of an element to Decimal 16460125 is called "border". The border property can be set on classes, ids or directly on the HTML element.

This example shows the color as border, it can be applied via the CSS property "border" or "border-color".

```
.border, #border, table{ border:4px solid
#FB295D }
```

If only the border color should be changed use the property `border-color`.

```
.border{ border-color:#FB295D }
```

If you want to add a box shadow in that color use:

Here you see how a box with a 4 pixel #FB295D colored shadow looks like.

```
.boxshadow{ -moz-box-shadow:4px 4px 4px  
4px #FB295D; -webkit-box-shadow:4px 4px  
4px 4px #FB295D; box-shadow:4px 4px 4px  
4px #FB295D }
```

Background

The CSS property to change the background color of an element to Decimal 16460125 is called "background". The background property can be set on classes, ids or directly on the HTML element.

```
.background, #background, body{  
background:#FB295D }
```

If only the background color should be changed can be used:

```
.background{ background-color:#FB295D }
```

This example shows the color as background, it is applied via the CSS property "background".

To optimize and compress your CSS code, you can use our [online CSS compressor and optimizer](#) based on csstidy. If you want to create a linear or radial gradient as background or border, check our [CSS Gradient Generator](#).

Hey! You found this booklet interesting? Support Converting Colors with the new Membership Option!

The pro membership hides all ads, plus gives you double the colors in the color bucket, and more awesome pro features!

[Learn more, Memberships starting at \\$2.50/m!](#)

**Follow me
on Twitter!**

@ConvertingColor