

Converting Colors

Decimal(16462445)

Have a look what the booklet for
Decimal(16462445) contains.

Decimal(16462445)	3
<i>Conversions</i>	4
<i>Details</i>	6
<i>Harmonies</i>	11
<i>Previews</i>	23
<i>Color Blindness Simulation</i>	26
<i>CSS Examples</i>	29

Color

Decimal(16462445)

Conversions

Conversions Part 1

Format	Color
Hex	FB326D
RGB	251, 50, 109
RGB Percent	98%, 20%, 43%
CMY	0.0157, 0.8039, 0.5725
CMYK	0.00, 0.80, 0.57, 0.02
HSL	342°, 96%, 59%
HSV	342°, 80%, 98%
XYZ	43.6846, 23.8946, 16.7777
YIQ	116.8250, 100.8570, 60.9610

Conversions

Conversions Part 2

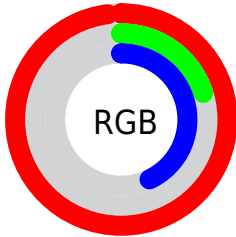
Format	Color
R_{YB}	251, 50, 109
Decimal	16462445
CIE _{Lab}	55.98, 75.60, 16.88
CIE _{LCh}	56, 77.458, 12.590
Yxy	23.8946, 0.5179, 0.2833
Android (android.graphics.Color)	4294652525 (0xFFFB326D)
YUV	116.8250, -3.8577, 117.6715
Hunter-Lab	48.8821, 73.9770, 13.8675

Details

The Decimal color **16462445** is a dark color, and the websafe version is hex **FF3366**. The color can be described as middle washed rose. A complement of this color would be **3341248**, and the grayscale version is **7697781**.

A 20% lighter version of the original color is **16741792**, and **12255294** is the 20% darker color. If you saturate the color by 10%, you get **16456027**, and if you desaturate by 10%, it is **16468863**.

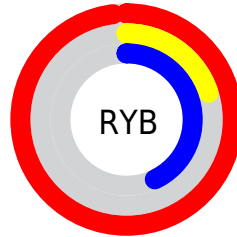
Distribution



Red (98%)

Green (20%)

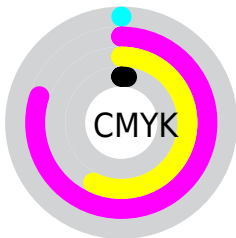
Blue (43%)



Red (98%)

Yellow (20%)

Blue (43%)

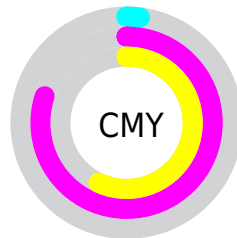


Cyan (0%)

Magenta (80%)

Yellow (57%)

Black (2%)



Cyan (2%)

Magenta (80%)

Yellow (57%)

Brightness & Saturation Gradients

These gradients show how the Decimal color 16462445 changes by changing the brightness by 10 percent. The first figure shows a shift by +10% for each color and the second figure -10%.

Similar to the brightness gradients but the following saturation gradients show a change of the Decimal color 16462445 by changing the saturation by 10% instead.

 16462445

 16462445

16777215

 14352469

 16741792

 12255294

 16749499

 10223657

 16756951

 8192021

 16764659

 6160386

 16772607

 4194307

 1900545

 0

 16462445

 16462445

16456027

16468863

16449610

16475280

16481698

16488116

16494534

16501207

16507625

16514043

16515071

Harmonies

Analogous

The Analogous color harmony consists of three colors that are next to each other on the color wheel.



15285936



16462445



15421996

Triad

The Triadic color harmony groups three colors that are evenly spaced from another and form a triangle on the color wheel.



16462445



3447302



39423

Complementary

The Complementary color scheme is a pair of colors which are on the opposite of each other on the color wheel.



16462445



3341248

Split Complementary

Split-complementary colors differ from the complementary color scheme. The scheme consists of three colors, the original color and two neighbors of the complement color.



41697



16462445



41307

Square

The Square scheme is like the rectangle color scheme, but the four colors are evenly spaced on the color wheel.



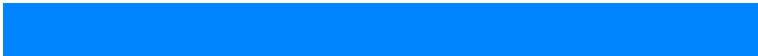
16462445



8948736



42146



34303

Rectangle

The Rectangle color scheme consists of four colors that form a rectangle on the color wheel.



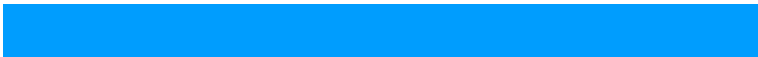
16462445



13789696



42146



40446

Sweetspot

The Sweet Spot groups the original color and five complimentary colors.



16462445



16761556



12530427



8412005



0



8421504

Same Dimension

The Same Dimension uses a secret algorithm to generate beautiful new colors.



16462445



16714322



16472626



8220788



12386359



3997714

Inverse Universe

The Inverse Universe completely reimagines the original color for something new.



16462445



16714322



3331067



8220788



12386359



3997714

Previews

White Background



This preview shows how the Decimal color 16462445 looks on a white background.

Color Contrast Check

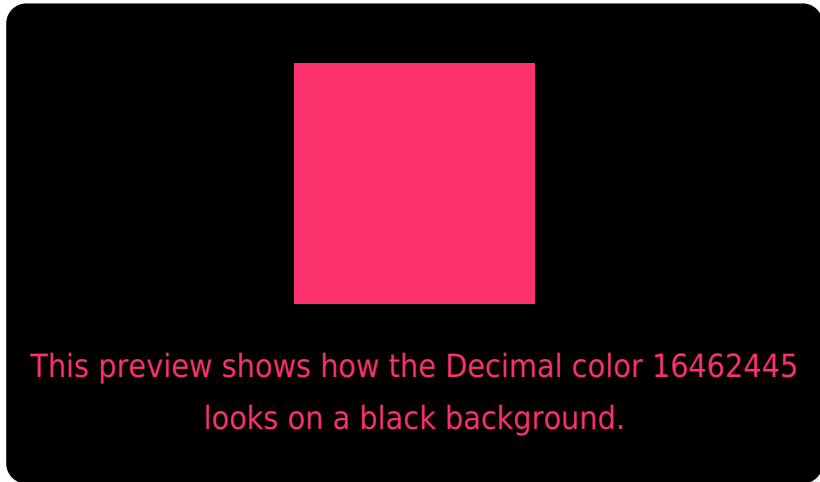
Large Text (above 18pt) WCAG AA ✓ Pass

Any Text WCAG AA × Fail

Large Text (above 18pt) WCAG AAA × Fail

Any Text WCAG AAA × Fail

Black Background



Color Contrast Check

Large Text (above 18pt) WCAG AA ✓ Pass

Any Text WCAG AA ✓ Pass

Large Text (above 18pt) WCAG AAA ✓ Pass

Any Text WCAG AAA × Fail

If you want to check with other color combinations, try the [Color Contrast Checker](#).

Decimal 16462445 Background



This preview shows how black text looks on a background with the Decimal color 16462445.



This preview shows how white text looks on a background with the Decimal color 16462445.

Color Blindness Simulation

Color vision deficiency is a very complex topic, and I could not describe the different causes any better than Wikipedia does, so if you want to learn more, you should check out their [article about color blindness](#).

Dichromacy

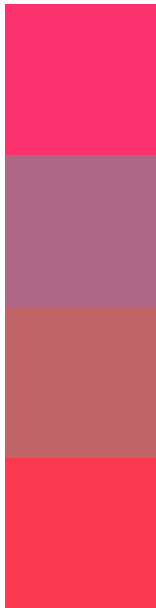


Original Color
16462445

Protanopia
8750741

Deuteranopia
10453347

Trichromacy



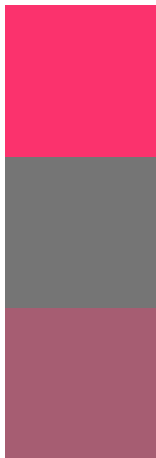
Original Color
16462445

Protanomaly
11560838

Deuteranomaly
12608615

Tritanomaly
16398928

Monochromacy



Original Color
16462445

Achromatopsia
7697781

Achromatomaly
10902898

CSS Examples

Text

The CSS property to change the color of the text to Decimal 16462445 is called "color". The color property can be set on classes, ids or directly on the HTML element.

This example shows how text in the color #FB326D looks like.

```
.text, #text, p{  
    color:#FB326D  
}
```

If you want to add a text shadow in that color use the text-shadow property, you can generate a text shadow directly with our [CSS Text Shadow Generator](#).

Here you see how black text with a 4 pixel #FB326D colored shadow looks like.

```
.shadow{ text-shadow: 4px 4px 2px #FB326D
}
```

Border

The CSS property to change the border of an element to Decimal 16462445 is called "border". The border property can be set on classes, ids or directly on the HTML element.

This example shows the color as border, it can be applied via the CSS property "border" or "border-color".

```
.border, #border, table{ border:4px solid
#FB326D }
```

If only the border color should be changed use the property `border-color`.

```
.border{ border-color:#FB326D }
```

If you want to add a box shadow in that color use:

Here you see how a box with a 4 pixel #FB326D colored shadow looks like.

```
.boxshadow{ -moz-box-shadow:4px 4px 4px  
4px #FB326D; -webkit-box-shadow:4px 4px  
4px 4px #FB326D; box-shadow:4px 4px 4px  
4px #FB326D }
```

Background

The CSS property to change the background color of an element to Decimal 16462445 is called "background". The background property can be set on classes, ids or directly on the HTML element.

```
.background, #background, body{  
background:#FB326D }
```

If only the background color should be changed can be used:

```
.background{ background-color:#FB326D }
```

This example shows the color as background, it is applied via the CSS property "background".

To optimize and compress your CSS code, you can use our [online CSS compressor and optimizer](#) based on csstidy. If you want to create a linear or radial gradient as background or border, check our [CSS Gradient Generator](#).

Hey! You found this booklet interesting? Support Converting Colors with the new Membership Option!

The pro membership hides all ads, plus gives you double the colors in the color bucket, and more awesome pro features!

[Learn more, Memberships starting at \\$2.50/m!](#)

**Follow me
on Twitter!**

@ConvertingColor