

# Converting Colors

Decimal(16470145)

Have a look what the booklet for  
Decimal(16470145) contains.

<b>Decimal(16470145)</b> .....	3
<i><b>Conversions</b></i> .....	4
<i><b>Details</b></i> .....	6
<i><b>Harmonies</b></i> .....	11
<i><b>Previews</b></i> .....	23
<i><b>Color Blindness Simulation</b></i> .....	26
<i><b>CSS Examples</b></i> .....	29

# **Color**

**Decimal(16470145)**

# Conversions

## Conversions Part 1

Format	Color
Hex	FB5081
RGB	251, 80, 129
RGB Percent	98%, 31%, 51%
CMY	0.0157, 0.6863, 0.4941
CMYK	0.00, 0.68, 0.49, 0.02
HSL	343°, 96%, 65%
HSV	343°, 68%, 98%
XYZ	46.6148, 27.8315, 23.6840
YIQ	136.7150, 86.1870, 51.4910

# Conversions

## Conversions Part 2

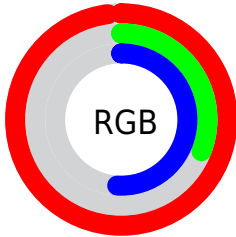
<b>Format</b>	<b>Color</b>
R <sub>Y</sub> B	251, 80, 129
Decimal	16470145
CIE Lab	59.74, 67.86, 10.30
CIE LCh	60, 68.632, 8.631
Yxy	27.8315, 0.4750, 0.2836
Android (android.graphics.Color)	4294660225 (0xFFFB5081)
YUV	136.7150, -3.8035, 100.2279
Hunter-Lab	52.7556, 65.4000, 10.3113

# Details

The Decimal color **16470145** is a light color, and the websafe version is hex **FF6699**. The color can be described as light muted rose. A complement of this color would be **5307338**, and the grayscale version is **9013641**.

A 20% lighter version of the original color is **16747446**, and **12386384** is the 20% darker color. If you saturate the color by 10%, you get **16463727**, and if you desaturate by 10%, it is **16476563**.

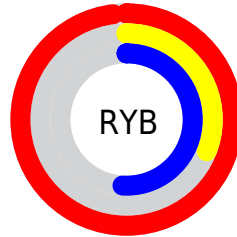
# Distribution



Red (98%)

Green (31%)

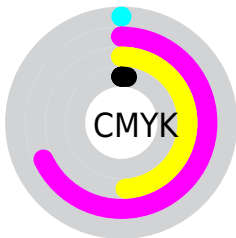
Blue (51%)



Red (98%)

Yellow (31%)

Blue (51%)

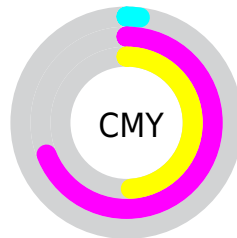


Cyan (0%)

Magenta (68%)

Yellow (49%)

Black (2%)



Cyan (2%)

Magenta (69%)

Yellow (49%)

# Brightness & Saturation Gradients

These gradients show how the Decimal color 16470145 changes by changing the brightness by 10 percent. The first figure shows a shift by +10% for each color and the second figure -10%.

Similar to the brightness gradients but the following saturation gradients show a change of the Decimal color 16470145 by changing the saturation by 10% instead.



 16470145

 16470145

16777215

 14430056

 16747446

 12386384

 16754897

 10354746

 16762349

 8388645

 16770047

 6422544

 4587523

 2424833

 0

 16470145

 16470145

■ 16463727

■ 16476563

■ 16457309

■ 16482981

■ 16450891

■ 16489399

■ 16449608

■ 16495817

■ 16502235

■ 16508908

■ 16515070

■ 16515071

# Harmonies

## Analogous

The Analogous color harmony consists of three colors that are next to each other on the color wheel.



15031229



16470145



15819335

# Triad

The Triadic color harmony groups three colors that are evenly spaced from another and form a triangle on the color wheel.



16470145



5939493



41727

# Complementary

The Complementary color scheme is a pair of colors which are on the opposite of each other on the color wheel.



16470145



5307338

# Split Complementary

Split-complementary colors differ from the complementary color scheme. The scheme consists of three colors, the original color and two neighbors of the complement color.



43738



16470145



43361

# Square

The Square scheme is like the rectangle color scheme, but the four colors are evenly spaced on the color wheel.



16470145



10261248



44192



37375

# Rectangle

The Rectangle color scheme consists of four colors that form a rectangle on the color wheel.



16470145



14447651



44192



42743



# Sweetspot

The Sweet Spot groups the original color and five complimentary colors.



16470145



16764123



13127931



8413546



0



8421504



# Same Dimension

The Same Dimension uses a secret algorithm to generate beautiful new colors.



16470145



16723562



16478800



8220788



12386358



3997714



# Inverse Universe

The Inverse Universe completely reimagines the original color for something new.



16470145



16723562



5298683



8220788



12386358



3997714



# Previews

## White Background



This preview shows how the Decimal color 16470145 looks on a white background.

## Color Contrast Check

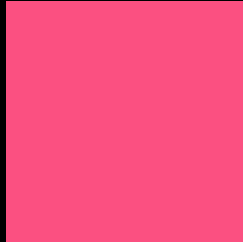
Large Text (above 18pt) WCAG AA ✓ Pass

Any Text WCAG AA × Fail

Large Text (above 18pt) WCAG AAA × Fail

Any Text WCAG AAA × Fail

# Black Background



This preview shows how the Decimal color 16470145 looks on a black background.

## Color Contrast Check

Large Text (above 18pt) WCAG AA ✓ Pass

Any Text WCAG AA ✓ Pass

Large Text (above 18pt) WCAG AAA ✓ Pass

Any Text WCAG AAA × Fail

If you want to check with other color combinations, try the [Color Contrast Checker](#).



## Decimal 16470145 Background



This preview shows how black text looks on a background with the Decimal color 16470145.



This preview shows how white text looks on a background with the Decimal color 16470145.

# Color Blindness Simulation

Color vision deficiency is a very complex topic, and I could not describe the different causes any better than Wikipedia does, so if you want to learn more, you should check out their [article about color blindness](#).

## Dichromacy



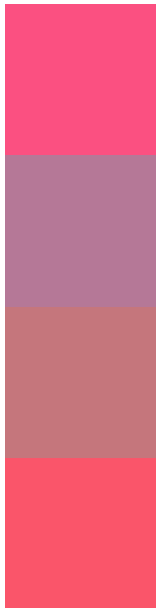
**Original Color**  
16470145

**Protanopia**  
9277348

**Deuteranopia**  
10914681



# Trichromacy



**Original Color**  
16470145

**Protanomaly**  
11892887

**Deuteranomaly**  
12940924

**Tritanomaly**  
16405866

# Monochromacy



**Original Color**  
16470145

**Achromatopsia**  
9013641

**Achromatomaly**  
11695238

# CSS Examples

## Text

The CSS property to change the color of the text to Decimal 16470145 is called "color". The color property can be set on classes, ids or directly on the HTML element.

This example shows how text in the color #FB5081 looks like.

```
.text, #text, p{  
    color:#FB5081  
}
```

If you want to add a text shadow in that color use the text-shadow property, you can generate a text shadow directly with our [CSS Text Shadow Generator](#).

Here you see how black text with a 4 pixel #FB5081 colored shadow looks like.

```
.shadow{ text-shadow: 4px 4px 2px #FB5081
}
```

## Border

The CSS property to change the border of an element to Decimal 16470145 is called "border". The border property can be set on classes, ids or directly on the HTML element.

This example shows the color as border, it can be applied via the CSS property "border" or "border-color".

```
.border, #border, table{ border:4px solid
#FB5081 }
```

If only the border color should be changed use the property `border-color`.

```
.border{ border-color:#FB5081 }
```

If you want to add a box shadow in that color use:

Here you see how a box with a 4 pixel #FB5081 colored shadow looks like.

```
.boxshadow{ -moz-box-shadow:4px 4px 4px  
4px #FB5081; -webkit-box-shadow:4px 4px  
4px 4px #FB5081; box-shadow:4px 4px 4px  
4px #FB5081 }
```

# Background

The CSS property to change the background color of an element to Decimal 16470145 is called "background". The background property can be set on classes, ids or directly on the HTML element.

```
.background, #background, body{  
background:#FB5081 }
```

If only the background color should be changed can be used:

```
.background{ background-color:#FB5081 }
```

This example shows the color as background, it is applied via the CSS property "background".

To optimize and compress your CSS code, you can use our [online CSS compressor and optimizer](#) based on csstidy. If you want to create a linear or radial gradient as background or border, check our [CSS Gradient Generator](#).



Hey! You found this booklet interesting? Support Converting Colors with the new Membership Option!

The pro membership hides all ads, plus gives you double the colors in the color bucket, and more awesome pro features!

**[Learn more, Memberships starting at \\$2.50/m!](#)**

**Follow me  
on Twitter!**

@ConvertingColor