

Converting Colors

Decimal(16470903)

Have a look what the booklet for
Decimal(16470903) contains.

Decimal(16470903)	3
<i>Conversions</i>	4
<i>Details</i>	6
<i>Harmonies</i>	11
<i>Previews</i>	23
<i>Color Blindness Simulation</i>	26
<i>CSS Examples</i>	29

Color

Decimal(16470903)

Conversions

Conversions Part 1

Format	Color
Hex	FB5377
RGB	251, 83, 119
RGB Percent	98%, 33%, 47%
CMY	0.0157, 0.6745, 0.5333
CMYK	0.00, 0.67, 0.53, 0.02
HSL	347°, 95%, 65%
HSV	347°, 67%, 98%
XYZ	46.2067, 28.0277, 20.4273
YIQ	137.3360, 88.5720, 46.8120

Conversions

Conversions Part 2

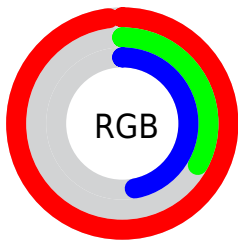
Format	Color
R _Y B	251, 83, 119
Decimal	16470903
CIE Lab	59.91, 65.94, 16.39
CIE LCh	60, 67.943, 13.961
Yxy	28.0277, 0.4881, 0.2961
Android (android.graphics.Color)	4294660983 (0xFFFB5377)
YUV	137.3360, -9.0396, 99.6833
Hunter-Lab	52.9411, 63.1466, 14.1818

Details

The Decimal color **16470903** is a light color, and the websafe version is hex **FF3366**. The color can be described as light muted rose. A complement of this color would be **5503959**, and the grayscale version is **9013641**.

A 20% lighter version of the original color is **16747947**, and **12320839** is the 20% darker color. If you saturate the color by 10%, you get **16464483**, and if you desaturate by 10%, it is **16477323**.

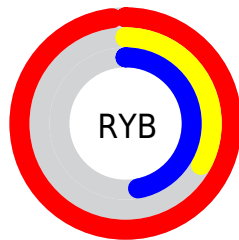
Distribution



Red (98%)

Green (33%)

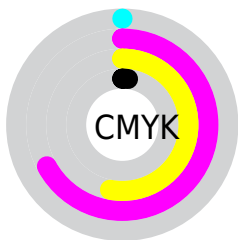
Blue (47%)



Red (98%)

Yellow (33%)

Blue (47%)

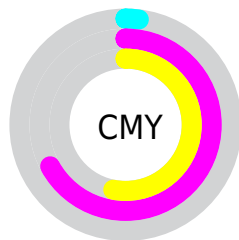


Cyan (0%)

Magenta (67%)

Yellow (53%)

Black (2%)



Cyan (2%)

Magenta (67%)

Yellow (53%)

Brightness & Saturation Gradients

These gradients show how the Decimal color 16470903 changes by changing the brightness by 10 percent. The first figure shows a shift by +10% for each color and the second figure -10%.

Similar to the brightness gradients but the following saturation gradients show a change of the Decimal color 16470903 by changing the saturation by 10% instead.

 16470903

 16470903

16777215

 14431070

 16747947

 12320839

 16755398

 10354737

 16762850

 8323101

 16770559

 6356994

 4521987

 2359297

 0

 16470903

 16470903

■ 16464483

■ 16477323

■ 16458064

■ 16483742

■ 16451644

■ 16490162

■ 16449590

■ 16496582

■ 16503258

■ 16509677

■ 16515071

Harmonies

Analogous

The Analogous color harmony consists of three colors that are next to each other on the color wheel.



15423923



16470903



15493183

Triad

The Triadic color harmony groups three colors that are evenly spaced from another and form a triangle on the color wheel.



16470903



5022514



41215

Complementary

The Complementary color scheme is a pair of colors which are on the opposite of each other on the color wheel.



16470903



5503959

Split Complementary

Split-complementary colors differ from the complementary color scheme. The scheme consists of three colors, the original color and two neighbors of the complement color.



43490



16470903



43629

Square

The Square scheme is like the rectangle color scheme, but the four colors are evenly spaced on the color wheel.



16470903



9672192



44204



4230911

Rectangle

The Rectangle color scheme consists of four colors that form a rectangle on the color wheel.



16470903



13990171



44204



42236

Sweetspot

The Sweet Spot groups the original color and five complimentary colors.



16470903



16764119



14111739



8413543



0



8421504

Same Dimension

The Same Dimension uses a secret algorithm to generate beautiful new colors.



16470903



16724831



16483155



8220787



12386344



3997709

Inverse Universe

The Inverse Universe completely reimagines the original color for something new.



16470903



16724831



5491707



8220787



12386344



3997709

Previews

White Background



This preview shows how the Decimal color 16470903 looks on a white background.

Color Contrast Check

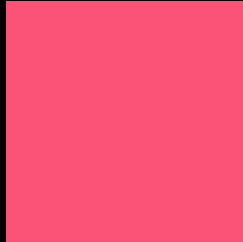
Large Text (above 18pt) WCAG AA ✓ Pass

Any Text WCAG AA × Fail

Large Text (above 18pt) WCAG AAA × Fail

Any Text WCAG AAA × Fail

Black Background



This preview shows how the Decimal color 16470903 looks on a black background.

Color Contrast Check

Large Text (above 18pt) WCAG AA ✓ Pass

Any Text WCAG AA ✓ Pass

Large Text (above 18pt) WCAG AAA ✓ Pass

Any Text WCAG AAA × Fail

If you want to check with other color combinations, try the [Color Contrast Checker](#).

Decimal 16470903 Background



This preview shows how black text looks on a background with the Decimal color 16470903.

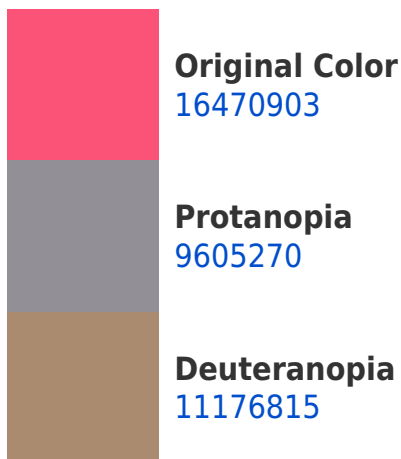



This preview shows how white text looks on a background with the Decimal color 16470903.

Color Blindness Simulation

Color vision deficiency is a very complex topic, and I could not describe the different causes any better than Wikipedia does, so if you want to learn more, you should check out their [article about color blindness](#).

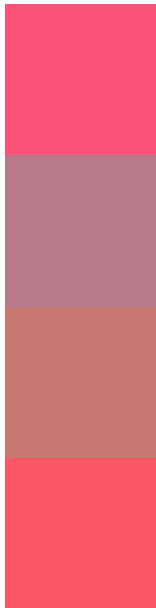
Dichromacy





Tritanopia
16406621

Trichromacy



Original Color
16470903

Protanomaly
12089995

Deuteranomaly
13072242

Tritanomaly
16406118

Monochromacy



Original Color
16470903

Achromatopsia
9013641

Achromatomaly
11695490

CSS Examples

Text

The CSS property to change the color of the text to Decimal 16470903 is called "color". The color property can be set on classes, ids or directly on the HTML element.

This example shows how text in the color #FB5377 looks like.

```
.text, #text, p{  
  color:#FB5377  
}
```

If you want to add a text shadow in that color use the text-shadow property, you can generate a text shadow directly with our [CSS Text Shadow Generator](#).

Here you see how black text with a 4 pixel #FB5377 colored shadow looks like.

```
.shadow{ text-shadow: 4px 4px 2px #FB5377
}
```

Border

The CSS property to change the border of an element to Decimal 16470903 is called "border". The border property can be set on classes, ids or directly on the HTML element.

This example shows the color as border, it can be applied via the CSS property "border" or "border-color".

```
.border, #border, table{ border:4px solid
#FB5377 }
```

If only the border color should be changed use the property `border-color`.

```
.border{ border-color:#FB5377 }
```

If you want to add a box shadow in that color use:

Here you see how a box with a 4 pixel #FB5377 colored shadow looks like.

```
.boxshadow{ -moz-box-shadow:4px 4px 4px  
4px #FB5377; -webkit-box-shadow:4px 4px  
4px 4px #FB5377; box-shadow:4px 4px 4px  
4px #FB5377 }
```

Background

The CSS property to change the background color of an element to Decimal 16470903 is called "background". The background property can be set on classes, ids or directly on the HTML element.

```
.background, #background, body{  
background:#FB5377 }
```

If only the background color should be changed can be used:

```
.background{ background-color:#FB5377 }
```

This example shows the color as background, it is applied via the CSS property "background".

To optimize and compress your CSS code, you can use our [online CSS compressor and optimizer](#) based on csstidy. If you want to create a linear or radial gradient as background or border, check our [CSS Gradient Generator](#).

Hey! You found this booklet interesting? Support Converting Colors with the new Membership Option!

The pro membership hides all ads, plus gives you double the colors in the color bucket, and more awesome pro features!

[Learn more, Memberships starting at \\$2.50/m!](#)

**Follow me
on Twitter!**

@ConvertingColor