

Converting Colors

Decimal(16480648)

Have a look what the booklet for
Decimal(16480648) contains.

Decimal(16480648)	3
<i>Conversions</i>	4
<i>Details</i>	6
<i>Harmonies</i>	11
<i>Previews</i>	23
<i>Color Blindness Simulation</i>	26
<i>CSS Examples</i>	29

Color

Decimal(16480648)

Conversions

Conversions Part 1

Format	Color
Hex	FB7988
RGB	251, 121, 136
RGB Percent	98%, 47%, 53%
CMY	0.0157, 0.5255, 0.4667
CMYK	0.00, 0.52, 0.46, 0.02
HSL	353°, 94%, 73%
HSV	353°, 52%, 98%
XYZ	51.0650, 35.9615, 27.5424
YIQ	161.5800, 72.6650, 32.2250

Conversions

Conversions Part 2

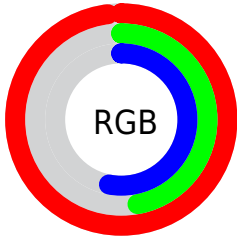
Format	Color
R _Y B	251, 121, 136
Decimal	16480648
CIE Lab	66.49, 50.91, 15.74
CIE LCh	66, 53.287, 17.179
Yxy	35.9615, 0.4457, 0.3139
Android (android.graphics.Color)	4294670728 (0xFFFB7988)
YUV	161.5800, -12.6109, 78.4213
Hunter-Lab	59.9679, 47.0556, 14.7465

Details

The Decimal color **16480648** is a light color, and the websafe version is hex **FF9999**. A complement of this color would be **7994348**, and the grayscale version is **10658466**.

A 20% lighter version of the original color is **16756925**, and **12469078** is the 20% darker color. If you saturate the color by 10%, you get **16474226**, and if you desaturate by 10%, it is **16487070**.

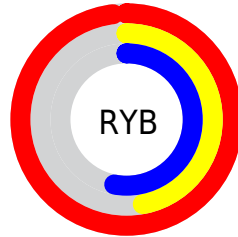
Distribution



Red (98%)

Green (47%)

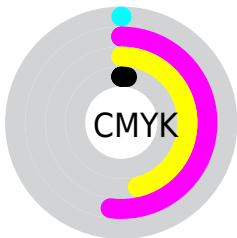
Blue (53%)



Red (98%)

Yellow (47%)

Blue (53%)

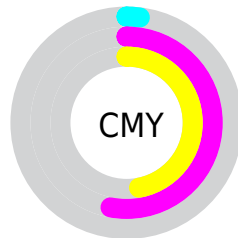


Cyan (0%)

Magenta (52%)

Yellow (46%)

Black (2%)



Cyan (2%)

Magenta (53%)

Yellow (47%)

Brightness & Saturation Gradients

These gradients show how the Decimal color 16480648 changes by changing the brightness by 10 percent. The first figure shows a shift by +10% for each color and the second figure -10%.

Similar to the brightness gradients but the following saturation gradients show a change of the Decimal color 16480648 by changing the saturation by 10% instead.

 16480648

 16480648

16777215

 14442095

 16756925

 12469078

 16764377

 10495551

 16771829

 8585258

 6684694

 4849664

 3080194

 0

 16480648

 16480648

■ 16474226

■ 16487070

■ 16467804

■ 16493492

■ 16461381

■ 16499915

■ 16454959

■ 16506337

■ 16449565

■ 16513015

■ 16515071

Harmonies

Analogous

The Analogous color harmony consists of three colors that are next to each other on the color wheel.



15694776



16480648



15631965

Triad

The Triadic color harmony groups three colors that are evenly spaced from another and form a triangle on the color wheel.



16480648



7058014



44543

Complementary

The Complementary color scheme is a pair of colors which are on the opposite of each other on the color wheel.



16480648



7994348

Split Complementary

Split-complementary colors differ from the complementary color scheme. The scheme consists of three colors, the original color and two neighbors of the complement color.



46823



16480648



47243

Square

The Square scheme is like the rectangle color scheme, but the four colors are evenly spaced on the color wheel.



16480648



10659905



47804



8494589

Rectangle

The Rectangle color scheme consists of four colors that form a rectangle on the color wheel.



16480648



14324296



47804



45561

Sweetspot

The Sweet Spot groups the original color and five complimentary colors.



16480648



16766683



15497723



8415082



0



8421504

Same Dimension

The Same Dimension uses a secret algorithm to generate beautiful new colors.



16480648



16736627



16493433



8220786



12386326



3997703

Inverse Universe

The Inverse Universe completely reimagines the original color for something new.



16480648



16736627



7981563



8220786



12386326



3997703

Previews

White Background



This preview shows how the Decimal color 16480648 looks on a white background.

Color Contrast Check

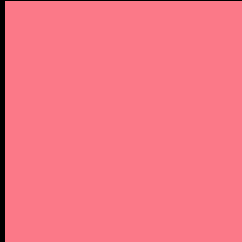
Large Text (above 18pt) WCAG AA × Fail

Any Text WCAG AA × Fail

Large Text (above 18pt) WCAG AAA × Fail

Any Text WCAG AAA × Fail

Black Background



This preview shows how the Decimal color 16480648 looks on a black background.

Color Contrast Check

Large Text (above 18pt) WCAG AA ✓ Pass

Any Text WCAG AA ✓ Pass

Large Text (above 18pt) WCAG AAA ✓ Pass

Any Text WCAG AAA ✓ Pass

If you want to check with other color combinations, try the [Color Contrast Checker](#).

Decimal 16480648 Background



This preview shows how black text looks on a background with the Decimal color 16480648.



This preview shows how white text looks on a background with the Decimal color 16480648.

Color Blindness Simulation

Color vision deficiency is a very complex topic, and I could not describe the different causes any better than Wikipedia does, so if you want to learn more, you should check out their [article about color blindness](#).

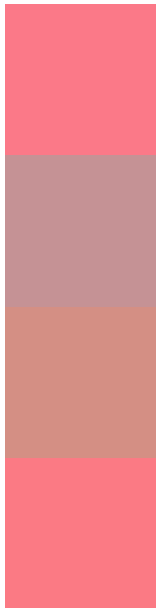
Dichromacy





Tritanopia
16480898

Trichromacy



Original Color
16480648

Protanomaly
12948117

Deuteranomaly
13930372

Tritanomaly
16480900

Monochromacy



Original Color
16480648

Achromatopsia
10658466

Achromatomaly
12751769

CSS Examples

Text

The CSS property to change the color of the text to Decimal 16480648 is called "color". The color property can be set on classes, ids or directly on the HTML element.

This example shows how text in the color #FB7988 looks like.

```
.text, #text, p{  
    color:#FB7988  
}
```

If you want to add a text shadow in that color use the text-shadow property, you can generate a text shadow directly with our [CSS Text Shadow Generator](#).

Here you see how black text with a 4 pixel #FB7988 colored shadow looks like.

```
.shadow{ text-shadow: 4px 4px 2px #FB7988
}
```

Border

The CSS property to change the border of an element to Decimal 16480648 is called "border". The border property can be set on classes, ids or directly on the HTML element.

This example shows the color as border, it can be applied via the CSS property "border" or "border-color".

```
.border, #border, table{ border:4px solid
#FB7988 }
```

If only the border color should be changed use the property `border-color`.

```
.border{ border-color:#FB7988 }
```

If you want to add a box shadow in that color use:

Here you see how a box with a 4 pixel #FB7988 colored shadow looks like.

```
.boxshadow{ -moz-box-shadow:4px 4px 4px  
4px #FB7988; -webkit-box-shadow:4px 4px  
4px 4px #FB7988; box-shadow:4px 4px 4px  
4px #FB7988 }
```

Background

The CSS property to change the background color of an element to Decimal 16480648 is called "background". The background property can be set on classes, ids or directly on the HTML element.

```
.background, #background, body{  
background:#FB7988 }
```

If only the background color should be changed can be used:

```
.background{ background-color:#FB7988 }
```

This example shows the color as background, it is applied via the CSS property "background".

To optimize and compress your CSS code, you can use our [online CSS compressor and optimizer](#) based on csstidy. If you want to create a linear or radial gradient as background or border, check our [CSS Gradient Generator](#).

Hey! You found this booklet interesting? Support Converting Colors with the new Membership Option!

The pro membership hides all ads, plus gives you double the colors in the color bucket, and more awesome pro features!

[Learn more, Memberships starting at \\$2.50/m!](#)

**Follow me
on Twitter!**

@ConvertingColor