

Converting Colors

Decimal(16528765)

Have a look what the booklet for
Decimal(16528765) contains.

Decimal(16528765)	3
<i>Conversions</i>	4
<i>Details</i>	6
<i>Harmonies</i>	11
<i>Previews</i>	23
<i>Color Blindness Simulation</i>	26
<i>CSS Examples</i>	29

Color

Decimal(16528765)

Conversions

Conversions Part 1

Format	Color
Hex	FC357D
RGB	252, 53, 125
RGB Percent	99%, 21%, 49%
CMY	0.0118, 0.7922, 0.5098
CMYK	0.00, 0.79, 0.50, 0.01
HSL	338°, 97%, 60%
HSV	338°, 79%, 99%
XYZ	45.1197, 24.7223, 21.7959
YIQ	120.7090, 95.4920, 64.5800

Conversions

Conversions Part 2

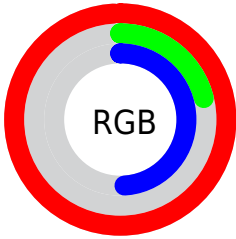
Format	Color
R_{YB}	252, 53, 125
Decimal	16528765
CIE _{Lab}	56.80, 76.23, 8.53
CIE _{LCh}	57, 76.709, 6.384
Yxy	24.7223, 0.4924, 0.2698
Android (android.graphics.Color)	4294718845 (0xFFFC357D)
YUV	120.7090, 2.1155, 115.1422
Hunter-Lab	49.7215, 74.9665, 8.8148

Details

The Decimal color **16528765** is a dark color, and the websafe version is hex **FF0066**. The color can be described as middle washed rose. A complement of this color would be **3538100**, and the grayscale version is **7960953**.

A 20% lighter version of the original color is **16742321**, and **12386381** is the 20% darker color. If you saturate the color by 10%, you get **16522349**, and if you desaturate by 10%, it is **16535181**.

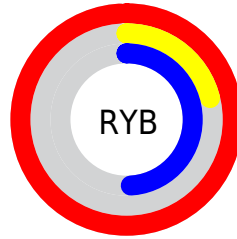
Distribution



Red (99%)

Green (21%)

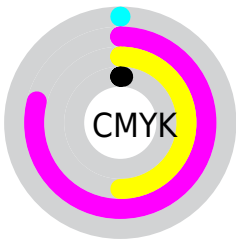
Blue (49%)



Red (99%)

Yellow (21%)

Blue (49%)

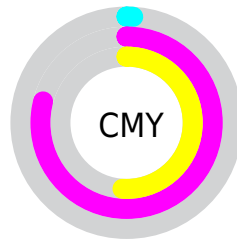


Cyan (0%)

Magenta (79%)

Yellow (50%)

Black (1%)



Cyan (1%)

Magenta (79%)

Yellow (51%)

Brightness & Saturation Gradients

These gradients show how the Decimal color 16528765 changes by changing the brightness by 10 percent. The first figure shows a shift by +10% for each color and the second figure -10%.

Similar to the brightness gradients but the following saturation gradients show a change of the Decimal color 16528765 by changing the saturation by 10% instead.

 16528765

 16528765

16777215

 14418020

 16742321

 12386381

 16750029

 10354742

 16757737

 8323106

 16765439

 6357002

 16773119

 4390915

 2162689

 0

 16528765

 16528765

■ 16522349

■ 16535181

■ 16515933

■ 16541597

■ 16515163

■ 16548269

■ 16554685

■ 16561101

■ 16567517

■ 16573934

■ 16580606

■ 16580607

Harmonies

Analogous

The Analogous color harmony consists of three colors that are next to each other on the color wheel.



14830271



16528765



15879740

Triad

The Triadic color harmony groups three colors that are evenly spaced from another and form a triangle on the color wheel.



16528765



5216768



40447

Complementary

The Complementary color scheme is a pair of colors which are on the opposite of each other on the color wheel.



16528765



3538100

Split Complementary

Split-complementary colors differ from the complementary color scheme. The scheme consists of three colors, the original color and two neighbors of the complement color.



42455



16528765



41551

Square

The Square scheme is like the rectangle color scheme, but the four colors are evenly spaced on the color wheel.



16528765



9996800



42389



36095

Rectangle

The Rectangle color scheme consists of four colors that form a rectangle on the color wheel.



16528765



14444040



42389



41464

Sweetspot

The Sweet Spot groups the original color and five complimentary colors.



16528765



16761560



11744764



8412008



0



8421504

Same Dimension

The Same Dimension uses a secret algorithm to generate beautiful new colors.



16528765



16715108



16535605



8220789



12386372



3997718

Inverse Universe

The Inverse Universe completely reimagines the original color for something new.



16528765



16715108



3531260



8220789



12386372



3997718

Previews

White Background



This preview shows how the Decimal color 16528765 looks on a white background.

Color Contrast Check

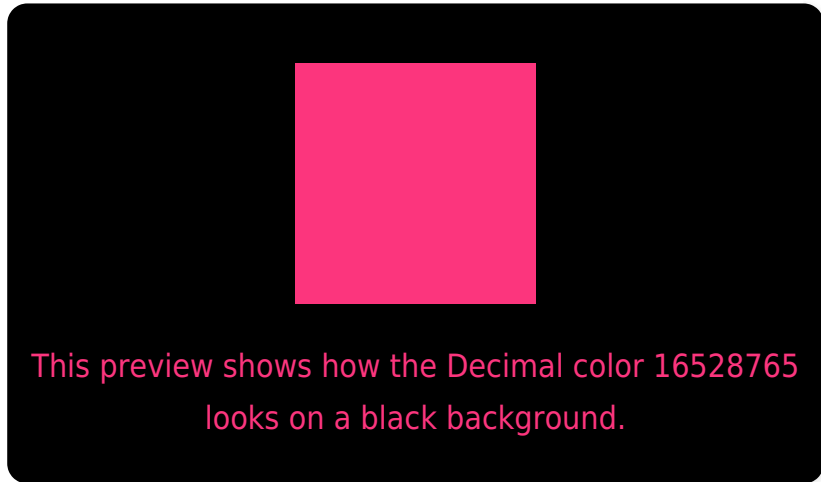
Large Text (above 18pt) WCAG AA ✓ Pass

Any Text WCAG AA × Fail

Large Text (above 18pt) WCAG AAA × Fail

Any Text WCAG AAA × Fail

Black Background



Color Contrast Check

Large Text (above 18pt) WCAG AA ✓ Pass

Any Text WCAG AA ✓ Pass

Large Text (above 18pt) WCAG AAA ✓ Pass

Any Text WCAG AAA × Fail

If you want to check with other color combinations, try the [Color Contrast Checker](#).

Decimal 16528765 Background



This preview shows how black text looks on a background with the Decimal color 16528765.



This preview shows how white text looks on a background with the Decimal color 16528765.

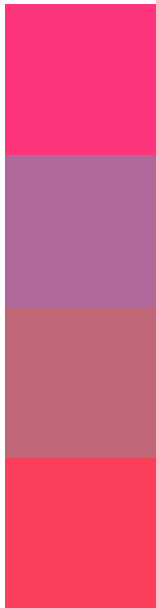
Color Blindness Simulation

Color vision deficiency is a very complex topic, and I could not describe the different causes any better than Wikipedia does, so if you want to learn more, you should check out their [article about color blindness](#).

Dichromacy



Trichromacy



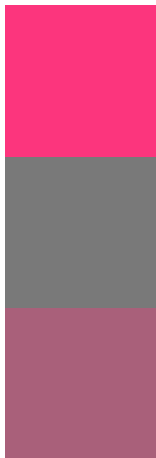
Original Color
16528765

Protanomaly
11430298

Deuteranomaly
12609399

Tritanomaly
16400218

Monochromacy



Original Color
16528765

Achromatopsia
7960953

Achromatomaly
11100282

CSS Examples

Text

The CSS property to change the color of the text to Decimal 16528765 is called "color". The color property can be set on classes, ids or directly on the HTML element.

This example shows how text in the color #FC357D looks like.

```
.text, #text, p{  
    color:#FC357D  
}
```

If you want to add a text shadow in that color use the text-shadow property, you can generate a text shadow directly with our [CSS Text Shadow Generator](#).

Here you see how black text with a 4 pixel #FC357D colored shadow looks like.

```
.shadow{ text-shadow: 4px 4px 2px #FC357D
}
```

Border

The CSS property to change the border of an element to Decimal 16528765 is called "border". The border property can be set on classes, ids or directly on the HTML element.

This example shows the color as border, it can be applied via the CSS property "border" or "border-color".

```
.border, #border, table{ border:4px solid
#FC357D }
```

If only the border color should be changed use the property `border-color`.

```
.border{ border-color:#FC357D }
```

If you want to add a box shadow in that color use:

Here you see how a box with a 4 pixel #FC357D colored shadow looks like.

```
.boxshadow{ -moz-box-shadow:4px 4px 4px  
4px #FC357D; -webkit-box-shadow:4px 4px  
4px 4px #FC357D; box-shadow:4px 4px 4px  
4px #FC357D }
```

Background

The CSS property to change the background color of an element to Decimal 16528765 is called "background". The background property can be set on classes, ids or directly on the HTML element.

```
.background, #background, body{  
background:#FC357D }
```

If only the background color should be changed can be used:

```
.background{ background-color:#FC357D }
```

This example shows the color as background, it is applied via the CSS property "background".

To optimize and compress your CSS code, you can use our [online CSS compressor and optimizer](#) based on csstidy. If you want to create a linear or radial gradient as background or border, check our [CSS Gradient Generator](#).

Hey! You found this booklet interesting? Support Converting Colors with the new Membership Option!

The pro membership hides all ads, plus gives you double the colors in the color bucket, and more awesome pro features!

[Learn more, Memberships starting at \\$2.50/m!](#)

**Follow me
on Twitter!**

@ConvertingColor