

Converting Colors

Decimal(16531307)

Have a look what the booklet for
Decimal(16531307) contains.

Decimal(16531307)	3
<i>Conversions</i>	4
<i>Details</i>	6
<i>Harmonies</i>	11
<i>Previews</i>	23
<i>Color Blindness Simulation</i>	26
<i>CSS Examples</i>	29

Color

Decimal(16531307)

Conversions

Conversions Part 1

Format	Color
Hex	FC3F6B
RGB	252, 63, 107
RGB Percent	99%, 25%, 42%
CMY	0.0118, 0.7529, 0.5804
CMYK	0.00, 0.75, 0.58, 0.01
HSL	346°, 97%, 62%
HSV	346°, 75%, 99%
XYZ	44.5762, 25.3120, 16.4462
YIQ	124.5270, 98.5200, 53.7520

Conversions

Conversions Part 2

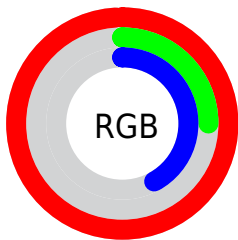
Format	Color
R_{YB}	252, 63, 107
Decimal	16531307
CIE _{Lab}	57.38, 72.19, 20.00
CIE _{LCh}	57, 74.906, 15.488
Yxy	25.3120, 0.5163, 0.2932
Android (android.graphics.Color)	4294721387 (0xFFFC3F6B)
YUV	124.5270, -8.6408, 111.7938
Hunter-Lab	50.3110, 70.1090, 15.8364

Details

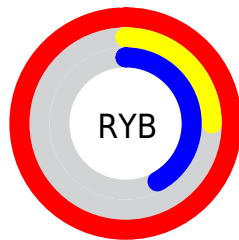
The Decimal color **16531307** is a dark color, and the websafe version is hex **FF3366**. The color can be described as middle washed rose. A complement of this color would be **4193488**, and the grayscale version is **8224125**.

A 20% lighter version of the original color is **16743838**, and **12320828** is the 20% darker color. If you saturate the color by 10%, you get **16524888**, and if you desaturate by 10%, it is **16537726**.

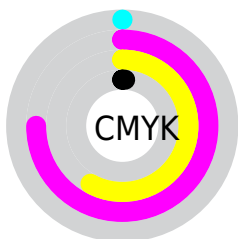
Distribution



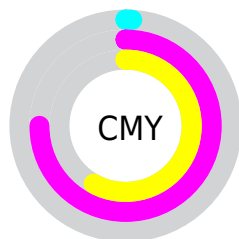
- Red (99%)
- Green (25%)
- Blue (42%)



- Red (99%)
- Yellow (25%)
- Blue (42%)



- Cyan (0%)
- Magenta (75%)
- Yellow (58%)
- Black (1%)



- Cyan (1%)
- Magenta (75%)
- Yellow (58%)

Brightness & Saturation Gradients

These gradients show how the Decimal color 16531307 changes by changing the brightness by 10 percent. The first figure shows a shift by +10% for each color and the second figure -10%.

Similar to the brightness gradients but the following saturation gradients show a change of the Decimal color 16531307 by changing the saturation by 10% instead.

 16531307

 16531307

16777215

 14422867

 16743838

 12320828

 16751545

 10289191

 16758996

 8257556

 16766705

 6225922

 16774399

 4325379

 2031617

 0

 16531307

 16531307

■ 16524888

■ 16537726

■ 16518468

■ 16544146

■ 16515131

■ 16550821

■ 16557240

■ 16563660

■ 16570079

■ 16576498

■ 16580607

Harmonies

Analogous

The Analogous color harmony consists of three colors that are next to each other on the color wheel.



15615404



16531307



15359021

Triad

The Triadic color harmony groups three colors that are evenly spaced from another and form a triangle on the color wheel.



16531307



3251744



39679

Complementary

The Complementary color scheme is a pair of colors which are on the opposite of each other on the color wheel.



16531307



4193488

Split Complementary

Split-complementary colors differ from the complementary color scheme. The scheme consists of three colors, the original color and two neighbors of the complement color.



42214



16531307



42343

Square

The Square scheme is like the rectangle color scheme, but the four colors are evenly spaced on the color wheel.



16531307



8884480



42923



2262783

Rectangle

The Rectangle color scheme consists of four colors that form a rectangle on the color wheel.



16531307



13660672



42923



40959

Sweetspot

The Sweet Spot groups the original color and five complimentary colors.



16531307



16762066



13647868



8412260



0



8421504

Same Dimension

The Same Dimension uses a secret algorithm to generate beautiful new colors.



16531307



16718159



16544063



8220787



12386348



3997710

Inverse Universe

The Inverse Universe completely reimagines the original color for something new.



16531307



16718159



4180732



8220787



12386348



3997710

Previews

White Background



This preview shows how the Decimal color 16531307 looks on a white background.

Color Contrast Check

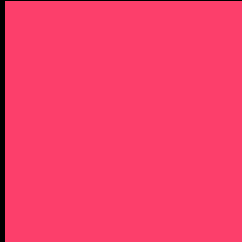
Large Text (above 18pt) WCAG AA ✓ Pass

Any Text WCAG AA × Fail

Large Text (above 18pt) WCAG AAA × Fail

Any Text WCAG AAA × Fail

Black Background



This preview shows how the Decimal color 16531307 looks on a black background.

Color Contrast Check

Large Text (above 18pt) WCAG AA ✓ Pass

Any Text WCAG AA ✓ Pass

Large Text (above 18pt) WCAG AAA ✓ Pass

Any Text WCAG AAA × Fail

If you want to check with other color combinations, try the [Color Contrast Checker](#).

Decimal 16531307 Background



This preview shows how black text looks on a background with the Decimal color 16531307.

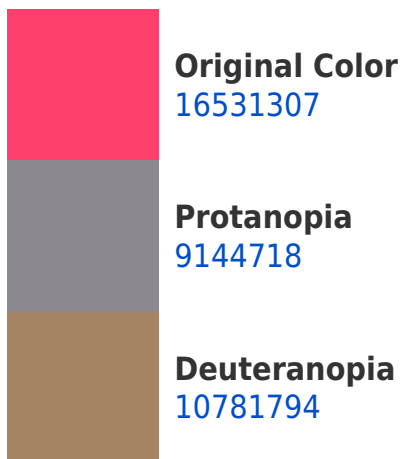



This preview shows how white text looks on a background with the Decimal color 16531307.

Color Blindness Simulation

Color vision deficiency is a very complex topic, and I could not describe the different causes any better than Wikipedia does, so if you want to learn more, you should check out their [article about color blindness](#).

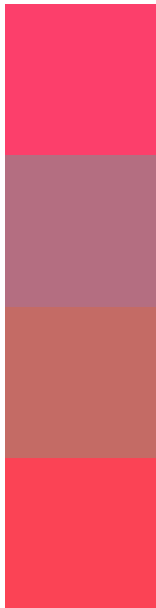
Dichromacy





Tritanopia
16401993

Trichromacy



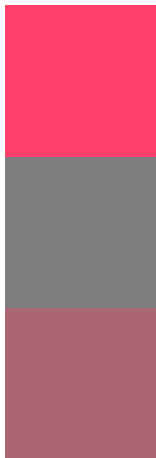
Original Color
16531307

Protanomaly
11824769

Deuteranomaly
12872549

Tritanomaly
16466773

Monochromacy



Original Color
16531307

Achromatopsia
8224125

Achromatomaly
11232886

CSS Examples

Text

The CSS property to change the color of the text to Decimal 16531307 is called "color". The color property can be set on classes, ids or directly on the HTML element.

This example shows how text in the color #FC3F6B looks like.

```
.text, #text, p{  
    color:#FC3F6B  
}
```

If you want to add a text shadow in that color use the text-shadow property, you can generate a text shadow directly with our [CSS Text Shadow Generator](#).

Here you see how black text with a 4 pixel #FC3F6B colored shadow looks like.

```
.shadow{ text-shadow: 4px 4px 2px #FC3F6B
}
```

Border

The CSS property to change the border of an element to Decimal 16531307 is called "border". The border property can be set on classes, ids or directly on the HTML element.

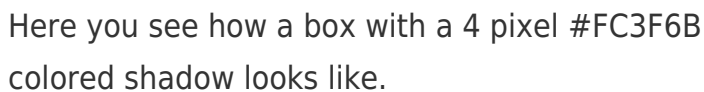
This example shows the color as border, it can be applied via the CSS property "border" or "border-color".

```
.border, #border, table{ border:4px solid
#FC3F6B }
```

If only the border color should be changed use the property `border-color`.

```
.border{ border-color:#FC3F6B }
```

If you want to add a box shadow in that color use:



Here you see how a box with a 4 pixel `#FC3F6B` colored shadow looks like.

```
.boxshadow{ -moz-box-shadow:4px 4px 4px  
4px #FC3F6B; -webkit-box-shadow:4px 4px  
4px 4px #FC3F6B; box-shadow:4px 4px 4px  
4px #FC3F6B }
```

Background

The CSS property to change the background color of an element to Decimal 16531307 is called "background". The background property can be set on classes, ids or directly on the HTML element.

```
.background, #background, body{  
background:#FC3F6B }
```

If only the background color should be changed can be used:

```
.background{ background-color:#FC3F6B }
```

This example shows the color as background, it is applied via the CSS property "background".

To optimize and compress your CSS code, you can use our [online CSS compressor and optimizer](#) based on csstidy. If you want to create a linear or radial gradient as background or border, check our [CSS Gradient Generator](#).

Hey! You found this booklet interesting? Support Converting Colors with the new Membership Option!

The pro membership hides all ads, plus gives you double the colors in the color bucket, and more awesome pro features!

[Learn more, Memberships starting at \\$2.50/m!](#)

**Follow me
on Twitter!**

@ConvertingColor