

# Converting Colors

Decimal(16533897)

Have a look what the booklet for  
Decimal(16533897) contains.

<b>Decimal(16533897)</b> .....	3
<i><b>Conversions</b></i> .....	4
<i><b>Details</b></i> .....	6
<i><b>Harmonies</b></i> .....	11
<i><b>Previews</b></i> .....	23
<i><b>Color Blindness Simulation</b></i> .....	26
<i><b>CSS Examples</b></i> .....	29

# **Color**

**Decimal(16533897)**

# Conversions

## Conversions Part 1

Format	Color
Hex	FC4989
RGB	252, 73, 137
RGB Percent	99%, 29%, 54%
CMY	0.0118, 0.7137, 0.4627
CMYK	0.00, 0.71, 0.46, 0.01
HSL	339°, 97%, 64%
HSV	339°, 71%, 99%
XYZ	47.0428, 27.2667, 26.4505
YIQ	133.8170, 86.1400, 57.8520

# Conversions

## Conversions Part 2

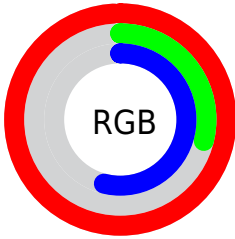
Format	Color
<a href="#">RYB</a>	<a href="#">252, 73, 137</a>
Decimal	<a href="#">16533897</a>
CIELab	<a href="#">59.22, 71.28, 4.90</a>
CIElCh	<a href="#">59, 71.450, 3.931</a>
Yxy	<a href="#">27.2667, 0.4669, 0.2706</a>
Android (android.graphics.Color)	<a href="#">4294723977 (0xFFFC4989)</a>
YUV	<a href="#">133.8170, 1.5692, 103.6465</a>
Hunter-Lab	<a href="#">52.2175, 69.4301, 6.5192</a>

# Details

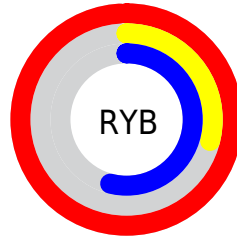
The Decimal color **16533897** is a light color, and the websafe version is hex **FF6699**. The color can be described as light washed rose. A complement of this color would be **4848828**, and the grayscale version is **8816262**.

A 20% lighter version of the original color is **16746174**, and **12451928** is the 20% darker color. If you saturate the color by 10%, you get **16527481**, and if you desaturate by 10%, it is **16540313**.

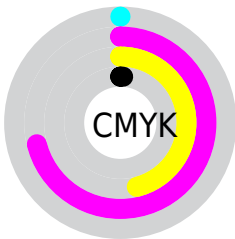
# Distribution



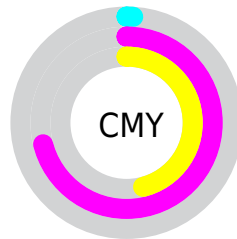
- Red (99%)
- Green (29%)
- Blue (54%)



- Red (99%)
- Yellow (29%)
- Blue (54%)



- Cyan (0%)
- Magenta (71%)
- Yellow (46%)
- Black (1%)



- Cyan (1%)
- Magenta (71%)
- Yellow (46%)

# Brightness & Saturation Gradients

These gradients show how the Decimal color 16533897 changes by changing the brightness by 10 percent. The first figure shows a shift by +10% for each color and the second figure -10%.

Similar to the brightness gradients but the following saturation gradients show a change of the Decimal color 16533897 by changing the saturation by 10% instead.



 16533897

 16533897

16777215

 14492784

 16746174

 12451928

 16753626

 10420288

 16761078

 8454187

 16768767

 6488087

 16776447

 4653060

 2490369

 0

 16533897

 16533897

 16527481

 16540313

 16521065

 16546729

 16515162

 16553402

 16559818

 16566234

 16572650

 16579066

 16580607

# Harmonies

## Analogous

The Analogous color harmony consists of three colors that are next to each other on the color wheel.



14637767



16533897



16144716

# Triad

The Triadic color harmony groups three colors that are evenly spaced from another and form a triangle on the color wheel.



16533897



6528526



41983

# Complementary

The Complementary color scheme is a pair of colors which are on the opposite of each other on the color wheel.



16533897



4848828

# Split Complementary

Split-complementary colors differ from the complementary color scheme. The scheme consists of three colors, the original color and two neighbors of the complement color.



43731



16533897



42836

# Square

The Square scheme is like the rectangle color scheme, but the four colors are evenly spaced on the color wheel.



16533897



10784512



43925



38143

# Rectangle

The Rectangle color scheme consists of four colors that form a rectangle on the color wheel.



16533897



14904613



43925



42740



# Sweetspot

The Sweet Spot groups the original color and five complimentary colors.



16533897



16763357



12208636



8413291



0



8421504



# Same Dimension

The Same Dimension uses a secret algorithm to generate beautiful new colors.



16533897



16721524



16539977



8220789



12386371



3997718



# Inverse Universe

The Inverse Universe completely reimagines the original color for something new.



16533897



16721524



4842748



8220789



12386371



3997718



# Previews

## White Background



This preview shows how the Decimal color 16533897 looks on a white background.

## Color Contrast Check

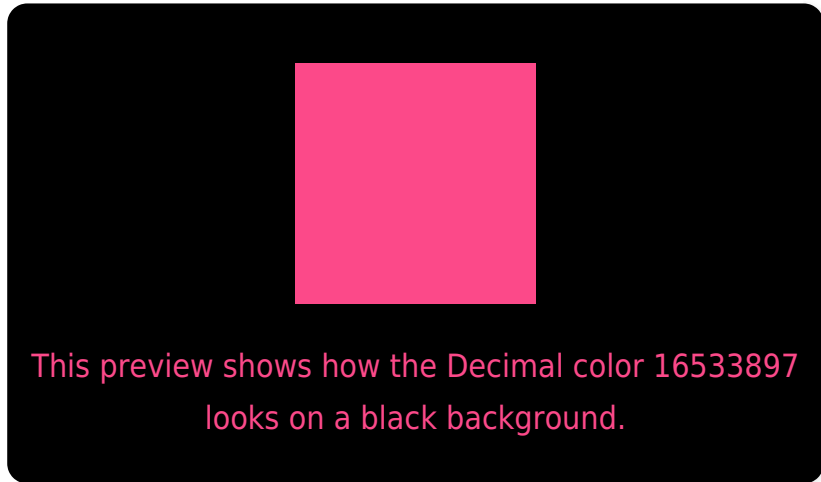
Large Text (above 18pt) WCAG AA ✓ Pass

Any Text WCAG AA × Fail

Large Text (above 18pt) WCAG AAA × Fail

Any Text WCAG AAA × Fail

# Black Background



## Color Contrast Check

Large Text (above 18pt) WCAG AA ✓ Pass

Any Text WCAG AA ✓ Pass

Large Text (above 18pt) WCAG AAA ✓ Pass

Any Text WCAG AAA × Fail

If you want to check with other color combinations, try the [Color Contrast Checker](#).



## Decimal 16533897 Background



This preview shows how black text looks on a background with the Decimal color 16533897.



This preview shows how white text looks on a background with the Decimal color 16533897.

# Color Blindness Simulation

Color vision deficiency is a very complex topic, and I could not describe the different causes any better than Wikipedia does, so if you want to learn more, you should check out their [article about color blindness](#).

## Dichromacy



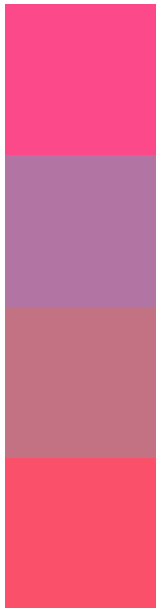
**Original Color**  
16533897

**Protanopia**  
8883633

**Deuteranopia**  
10652288



# Trichromacy



**Original Color**  
16533897

**Protanomaly**  
11695266

**Deuteranomaly**  
12808835

**Tritanomaly**  
16404586

# Monochromacy



**Original Color**  
16533897

**Achromatopsia**  
8816262

**Achromatomaly**  
11628679

# CSS Examples

## Text

The CSS property to change the color of the text to Decimal 16533897 is called "color". The color property can be set on classes, ids or directly on the HTML element.

This example shows how text in the color #FC4989 looks like.

```
.text, #text, p{  
    color:#FC4989  
}
```

If you want to add a text shadow in that color use the text-shadow property, you can generate a text shadow directly with our [CSS Text Shadow Generator](#).

Here you see how black text with a 4 pixel #FC4989 colored shadow looks like.

```
.shadow{ text-shadow: 4px 4px 2px #FC4989
}
```

## Border

The CSS property to change the border of an element to Decimal 16533897 is called "border". The border property can be set on classes, ids or directly on the HTML element.

This example shows the color as border, it can be applied via the CSS property "border" or "border-color".

```
.border, #border, table{ border:4px solid
#FC4989 }
```

If only the border color should be changed use the property `border-color`.

```
.border{ border-color:#FC4989 }
```

If you want to add a box shadow in that color use:

Here you see how a box with a 4 pixel #FC4989 colored shadow looks like.

```
.boxshadow{ -moz-box-shadow:4px 4px 4px  
4px #FC4989; -webkit-box-shadow:4px 4px  
4px 4px #FC4989; box-shadow:4px 4px 4px  
4px #FC4989 }
```

# Background

The CSS property to change the background color of an element to Decimal 16533897 is called "background". The background property can be set on classes, ids or directly on the HTML element.

```
.background, #background, body{  
background:#FC4989 }
```

If only the background color should be changed can be used:

```
.background{ background-color:#FC4989 }
```

This example shows the color as background, it is applied via the CSS property "background".

To optimize and compress your CSS code, you can use our [online CSS compressor and optimizer](#) based on csstidy. If you want to create a linear or radial gradient as background or border, check our [CSS Gradient Generator](#).



Hey! You found this booklet interesting? Support Converting Colors with the new Membership Option!

The pro membership hides all ads, plus gives you double the colors in the color bucket, and more awesome pro features!

**[Learn more, Memberships starting at \\$2.50/m!](#)**

**Follow me  
on Twitter!**

@ConvertingColor