

# Converting Colors

Decimal(16563672)

Have a look what the booklet for  
Decimal(16563672) contains.

<b>Decimal(16563672)</b> .....	3
<i><b>Conversions</b></i> .....	4
<i><b>Details</b></i> .....	6
<i><b>Harmonies</b></i> .....	11
<i><b>Previews</b></i> .....	23
<i><b>Color Blindness Simulation</b></i> .....	26
<i><b>CSS Examples</b></i> .....	29

# **Color**

**Decimal(16563672)**

# Conversions

## Conversions Part 1

Format	Color
Hex	FCBDD8
RGB	252, 189, 216
RGB Percent	99%, 74%, 85%
CMY	0.0118, 0.2588, 0.1529
CMYK	0.00, 0.25, 0.14, 0.01
HSL	334°, 91%, 86%
HSV	334°, 25%, 99%
XYZ	70.7371, 62.0485, 73.2141
YIQ	210.9150, 28.8810, 21.7530

# Conversions

## Conversions Part 2

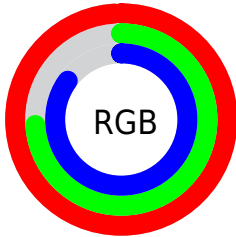
Format	Color
R <sub>Y</sub> B	252, 189, 216
Decimal	16563672
CIE Lab	82.94, 26.65, -4.63
CIE LCh	83, 27.050, 350.141
Yxy	62.0485, 0.3434, 0.3012
Android (android.graphics.Color)	4294753752 (0xFFFCBDD8)
YUV	210.9150, 2.5069, 36.0315
Hunter-Lab	78.7709, 22.4460, 0.0322

# Details

The Decimal color **16563672** is a light color, and the websafe version is hex **FFCCFF**. A complement of this color would be **12451041**, and the grayscale version is **13882323**.

A 20% lighter version of the original color is **16774911**, and **12814241** is the 20% darker color. If you saturate the color by 10%, you get **16557258**, and if you desaturate by 10%, it is **16570086**.

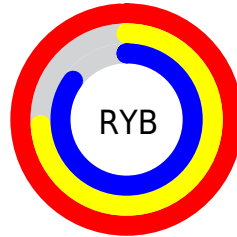
# Distribution



Red (99%)

Green (74%)

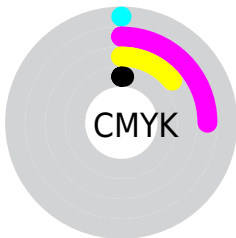
Blue (85%)



Red (99%)

Yellow (74%)

Blue (85%)

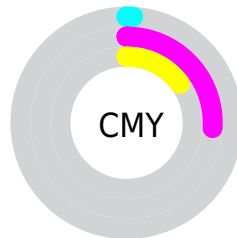


Cyan (0%)

Magenta (25%)

Yellow (14%)

Black (1%)



Cyan (1%)

Magenta (26%)

Yellow (15%)

# Brightness & Saturation Gradients

These gradients show how the Decimal color 16563672 changes by changing the brightness by 10 percent. The first figure shows a shift by +10% for each color and the second figure -10%.

Similar to the brightness gradients but the following saturation gradients show a change of the Decimal color 16563672 by changing the saturation by 10% instead.



 16563672

 16563672

16777215

 14656188

 16774911

 12814241

 10972551

 9196910

 7486805

 5776702

 4197928

 2752532

 0

 16563672

 16563672

 16557258

 16570086

 16550843

 16576501

 16544173

 16580607

 16537758

 16531344

 16524930

 16518515

 16515180

# Harmonies

## Analogous

The Analogous color harmony consists of three colors that are next to each other on the color wheel.



15188719



16563672



16760254

# Triad

The Triadic color harmony groups three colors that are evenly spaced from another and form a triangle on the color wheel.



16563672



13619871



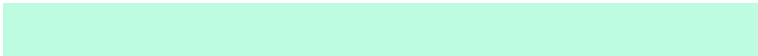
9165557

# Complementary

The Complementary color scheme is a pair of colors which are on the opposite of each other on the color wheel.



16563672



12451041

# Split Complementary

Split-complementary colors differ from the complementary color scheme. The scheme consists of three colors, the original color and two neighbors of the complement color.



8904159



16563672



11721133

# Square

The Square scheme is like the rectangle color scheme, but the four colors are evenly spaced on the color wheel.



16563672



15321757



9952453



10867711

# Rectangle

The Rectangle color scheme consists of four colors that form a rectangle on the color wheel.



16563672



16761007



9952453



8903662



# Sweetspot

The Sweet Spot groups the original color and five complimentary colors.



16563672



16772083



14794236



8418168



0



8421504



# Same Dimension

The Same Dimension uses a secret algorithm to generate beautiful new colors.



16563672



16757715



16564669



8220790



12386385



3997722



# Inverse Universe

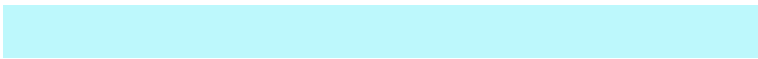
The Inverse Universe completely reimagines the original color for something new.



16563672



16757715



12450044



8220790



12386385



3997722



# Previews

## White Background



This preview shows how the Decimal color 16563672 looks on a white background.

## Color Contrast Check

Large Text (above 18pt) WCAG AA × Fail

Any Text WCAG AA × Fail

Large Text (above 18pt) WCAG AAA × Fail

Any Text WCAG AAA × Fail

# Black Background



This preview shows how the Decimal color 16563672 looks on a black background.

## Color Contrast Check

Large Text (above 18pt) WCAG AA ✓ Pass

Any Text WCAG AA ✓ Pass

Large Text (above 18pt) WCAG AAA ✓ Pass

Any Text WCAG AAA ✓ Pass

If you want to check with other color combinations, try the [Color Contrast Checker](#).



## Decimal 16563672 Background



This preview shows how black text looks on a background with the Decimal color 16563672.



This preview shows how white text looks on a background with the Decimal color 16563672.

# Color Blindness Simulation

Color vision deficiency is a very complex topic, and I could not describe the different causes any better than Wikipedia does, so if you want to learn more, you should check out their [article about color blindness](#).


## Dichromacy



**Original Color**  
16563672

**Protanopia**  
13487586

**Deuteranopia**  
14731734

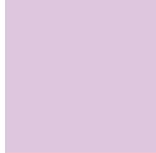


**Tritanopia**  
16498637

# Trichromacy



**Original Color**  
16563672



**Protanomaly**  
14600158



**Deuteranomaly**  
15386071

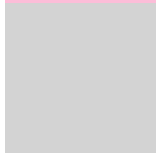


**Tritanomaly**  
16498385

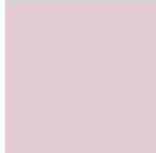
# Monochromacy



**Original Color**  
16563672



**Achromatopsia**  
13882323



**Achromatomaly**  
14863317

# CSS Examples

## Text

The CSS property to change the color of the text to Decimal 16563672 is called "color". The color property can be set on classes, ids or directly on the HTML element.

This example shows how text in the color #FCBDD8 looks like.

```
.text, #text, p{  
    color:#FCBDD8  
}
```

If you want to add a text shadow in that color use the text-shadow property, you can generate a text shadow directly with our [CSS Text Shadow Generator](#).

Here you see how black text with a 4 pixel #FCBDD8 colored shadow looks like.

```
.shadow{ text-shadow: 4px 4px 2px #FCBDD8
}
```

## Border

The CSS property to change the border of an element to Decimal 16563672 is called "border". The border property can be set on classes, ids or directly on the HTML element.

This example shows the color as border, it can be applied via the CSS property "border" or "border-color".

```
.border, #border, table{ border:4px solid
#FCBDD8 }
```

If only the border color should be changed use the property `border-color`.

```
.border{ border-color:#FCBDD8 }
```

If you want to add a box shadow in that color use:

Here you see how a box with a 4 pixel #FCBDD8 colored shadow looks like.

```
.boxshadow{ -moz-box-shadow:4px 4px 4px  
4px #FCBDD8; -webkit-box-shadow:4px 4px  
4px 4px #FCBDD8; box-shadow:4px 4px 4px  
4px #FCBDD8 }
```

# Background

The CSS property to change the background color of an element to Decimal 16563672 is called "background". The background property can be set on classes, ids or directly on the HTML element.

```
.background, #background, body{  
background:#FCBDD8 }
```

If only the background color should be changed can be used:

```
.background{ background-color:#FCBDD8 }
```

This example shows the color as background, it is applied via the CSS property "background".

To optimize and compress your CSS code, you can use our [online CSS compressor and optimizer](#) based on csstidy. If you want to create a linear or radial gradient as background or border, check our [CSS Gradient Generator](#).



Hey! You found this booklet interesting? Support Converting Colors with the new Membership Option!

The pro membership hides all ads, plus gives you double the colors in the color bucket, and more awesome pro features!

**[Learn more, Memberships starting at \\$2.50/m!](#)**

**Follow me  
on Twitter!**

@ConvertingColor