

# Converting Colors

Decimal(16590943)

Have a look what the booklet for  
Decimal(16590943) contains.

<b>Decimal(16590943)</b> .....	3
<i><b>Conversions</b></i> .....	4
<i><b>Details</b></i> .....	6
<i><b>Harmonies</b></i> .....	11
<i><b>Previews</b></i> .....	23
<i><b>Color Blindness Simulation</b></i> .....	26
<i><b>CSS Examples</b></i> .....	29

**Color**

**Decimal(16590943)**

# Conversions

## Conversions Part 1

Format	Color
Hex	FD285F
RGB	253, 40, 95
RGB Percent	99%, 16%, 37%
CMY	0.0078, 0.8431, 0.6275
CMYK	0.00, 0.84, 0.62, 0.01
HSL	345°, 98%, 57%
HSV	345°, 84%, 99%
XYZ	43.3324, 23.2265, 13.0258
YIQ	109.9570, 109.2930, 62.2610

# Conversions

## Conversions Part 2

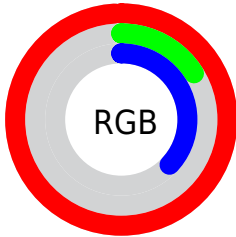
Format	Color
R <sub>Y</sub> B	253, 40, 95
Decimal	16590943
CIE Lab	55.30, 77.47, 24.39
CIE LCh	55, 81.224, 17.476
Yxy	23.2265, 0.5445, 0.2918
Android (android.graphics.Color)	4294781023 (0xFFFD285F)
YUV	109.9570, -7.3738, 125.4487
Hunter-Lab	48.1938, 76.1549, 17.7109

# Details

The Decimal color **16590943** is a dark color, and the websafe version is hex **FF3366**. The color can be described as dark washed red. A complement of this color would be **2686406**, and the grayscale version is **7237230**.

A 20% lighter version of the original color is **16740241**, and **12320818** is the 20% darker color. If you saturate the color by 10%, you get **16584524**, and if you desaturate by 10%, it is **16597362**.

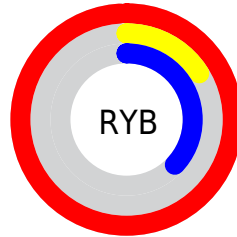
# Distribution



Red (99%)

Green (16%)

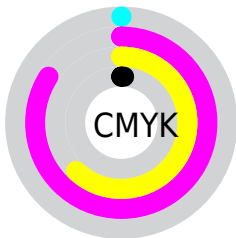
Blue (37%)



Red (99%)

Yellow (16%)

Blue (37%)

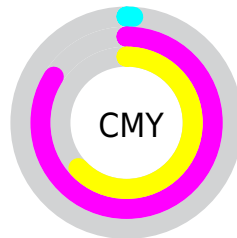


Cyan (0%)

Magenta (84%)

Yellow (62%)

Black (1%)



Cyan (1%)

Magenta (84%)

Yellow (63%)

# Brightness & Saturation Gradients

These gradients show how the Decimal color 16590943 changes by changing the brightness by 10 percent. The first figure shows a shift by +10% for each color and the second figure -10%.

Similar to the brightness gradients but the following saturation gradients show a change of the Decimal color 16590943 by changing the saturation by 10% instead.



 16590943

 16590943

16777215

 14483528

 16740241

 12320818

 16747947

 10223645

 16755655

 8192005

 16763363

 6094851

 16771327

 4128771

 1769473

 0

 16590943

 16590943

■ 16584524

■ 16597362

■ 16580673

■ 16604037

■ 16610455

■ 16616874

■ 16623549

■ 16629968

■ 16636386

■ 16642805

16646143

# Harmonies

## Analogous

The Analogous color harmony consists of three colors that are next to each other on the color wheel.



15805605



16590943



15160088

# Triad

The Triadic color harmony groups three colors that are evenly spaced from another and form a triangle on the color wheel.



16590943



39694



38655

# Complementary

The Complementary color scheme is a pair of colors which are on the opposite of each other on the color wheel.



16590943



2686406

# Split Complementary

Split-complementary colors differ from the complementary color scheme. The scheme consists of three colors, the original color and two neighbors of the complement color.



41196



16590943



41315

# Square

The Square scheme is like the rectangle color scheme, but the four colors are evenly spaced on the color wheel.



16590943



8031744



41901



32767

# Rectangle

The Rectangle color scheme consists of four colors that form a rectangle on the color wheel.



16590943



13265920



41901



39679



# Sweetspot

The Sweet Spot groups the original color and five complimentary colors.



16590943



16760784



12855549



8411491



0



8421504



# Same Dimension

The Same Dimension uses a secret algorithm to generate beautiful new colors.



16590943



16711746



16603688



8418166



12517425



4194320



# Inverse Universe

The Inverse Universe completely reimagines the original color for something new.



16590943



16711746



2673661



8418166



12517425



4194320



# Previews

## White Background



This preview shows how the Decimal color 16590943 looks on a white background.

## Color Contrast Check

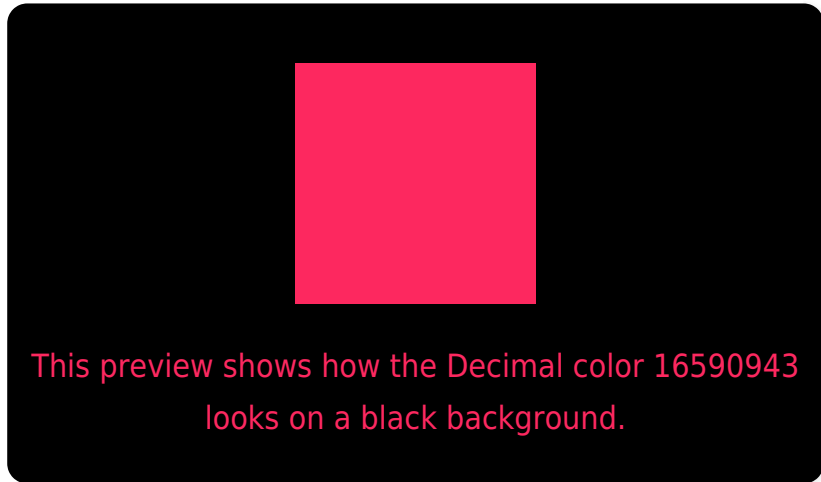
Large Text (above 18pt) WCAG AA ✓ Pass

Any Text WCAG AA × Fail

Large Text (above 18pt) WCAG AAA × Fail

Any Text WCAG AAA × Fail

# Black Background



## Color Contrast Check

Large Text (above 18pt) WCAG AA ✓ Pass

Any Text WCAG AA ✓ Pass

Large Text (above 18pt) WCAG AAA ✓ Pass

Any Text WCAG AAA × Fail

If you want to check with other color combinations, try the [Color Contrast Checker](#).



## Decimal 16590943 Background



This preview shows how black text looks on a background with the Decimal color 16590943.



This preview shows how white text looks on a background with the Decimal color 16590943.

# Color Blindness Simulation

Color vision deficiency is a very complex topic, and I could not describe the different causes any better than Wikipedia does, so if you want to learn more, you should check out their [article about color blindness](#).

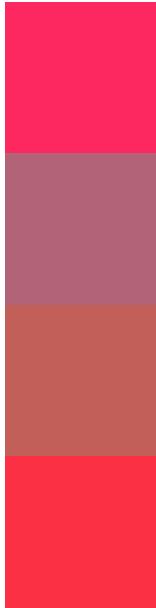
## Dichromacy





**Tritanopia**  
16462900

# Trichromacy



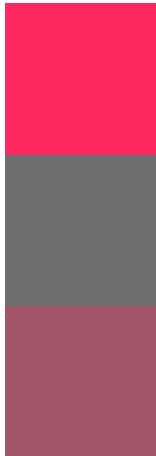
**Original Color**  
16590943

**Protanomaly**  
11690872

**Deuteranomaly**  
12738393

**Tritanomaly**  
16527428

# Monochromacy



**Original Color**  
16590943

**Achromatopsia**  
7237230

**Achromatomaly**  
10638697

# CSS Examples

## Text

The CSS property to change the color of the text to Decimal 16590943 is called "color". The color property can be set on classes, ids or directly on the HTML element.

This example shows how text in the color #FD285F looks like.

```
.text, #text, p{  
  color:#FD285F  
}
```

If you want to add a text shadow in that color use the text-shadow property, you can generate a text shadow directly with our [CSS Text Shadow Generator](#).

Here you see how black text with a 4 pixel #FD285F colored shadow looks like.

```
.shadow{ text-shadow: 4px 4px 2px #FD285F
}
```

## Border

The CSS property to change the border of an element to Decimal 16590943 is called "border". The border property can be set on classes, ids or directly on the HTML element.

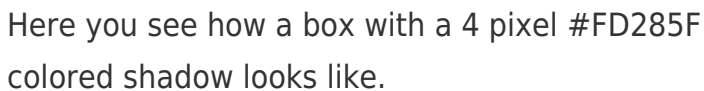
This example shows the color as border, it can be applied via the CSS property "border" or "border-color".

```
.border, #border, table{ border:4px solid
#FD285F }
```

If only the border color should be changed use the property `border-color`.

```
.border{ border-color:#FD285F }
```

If you want to add a box shadow in that color use:



Here you see how a box with a 4 pixel `#FD285F` colored shadow looks like.

```
.boxshadow{ -moz-box-shadow:4px 4px 4px  
4px #FD285F; -webkit-box-shadow:4px 4px  
4px 4px #FD285F; box-shadow:4px 4px 4px  
4px #FD285F }
```

# Background

The CSS property to change the background color of an element to Decimal 16590943 is called "background". The background property can be set on classes, ids or directly on the HTML element.

```
.background, #background, body{  
background:#FD285F }
```

If only the background color should be changed can be used:

```
.background{ background-color:#FD285F }
```

This example shows the color as background, it is applied via the CSS property "background".

To optimize and compress your CSS code, you can use our [online CSS compressor and optimizer](#) based on csstidy. If you want to create a linear or radial gradient as background or border, check our [CSS Gradient Generator](#).



Hey! You found this booklet interesting? Support Converting Colors with the new Membership Option!

The pro membership hides all ads, plus gives you double the colors in the color bucket, and more awesome pro features!

**[Learn more, Memberships starting at \\$2.50/m!](#)**

**Follow me  
on Twitter!**

@ConvertingColor