

Converting Colors

Decimal(16594280)

Have a look what the booklet for
Decimal(16594280) contains.

Decimal(16594280)	3
<i>Conversions</i>	4
<i>Details</i>	6
<i>Harmonies</i>	11
<i>Previews</i>	23
<i>Color Blindness Simulation</i>	26
<i>CSS Examples</i>	29

Color

Decimal(16594280)

Conversions

Conversions Part 1

Format	Color
Hex	FD3568
RGB	253, 53, 104
RGB Percent	99%, 21%, 41%
CMY	0.0078, 0.7922, 0.5922
CMYK	0.00, 0.79, 0.59, 0.01
HSL	345°, 98%, 60%
HSV	345°, 79%, 99%
XYZ	44.2798, 24.4283, 15.4780
YIQ	118.6140, 102.8290, 58.2610

Conversions

Conversions Part 2

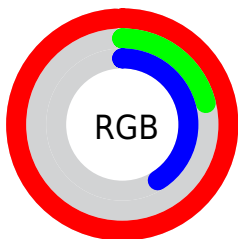
Format	Color
R _Y B	253, 53, 104
Decimal	16594280
CIE Lab	56.51, 75.05, 20.64
CIE LCh	57, 77.835, 15.381
Yxy	24.4283, 0.5260, 0.2902
Android (android.graphics.Color)	4294784360 (0xFFFD3568)
YUV	118.6140, -7.2047, 117.8565
Hunter-Lab	49.4250, 73.4241, 16.0301

Details

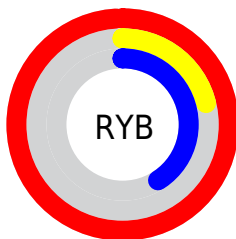
The Decimal color **16594280** is a dark color, and the websafe version is hex **FF3366**. The color can be described as middle washed rose. A complement of this color would be **3538378**, and the grayscale version is **7829367**.

A 20% lighter version of the original color is **16742299**, and **12386362** is the 20% darker color. If you saturate the color by 10%, you get **16587861**, and if you desaturate by 10%, it is **16600699**.

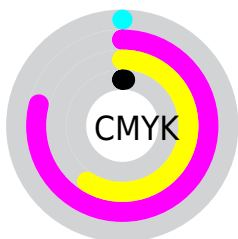
Distribution



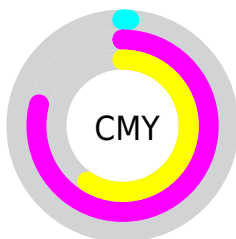
- Red (99%)
- Green (21%)
- Blue (41%)



- Red (99%)
- Yellow (21%)
- Blue (41%)



- Cyan (0%)
- Magenta (79%)
- Yellow (59%)
- Black (1%)



- Cyan (1%)
- Magenta (79%)
- Yellow (59%)

Brightness & Saturation Gradients

These gradients show how the Decimal color 16594280 changes by changing the brightness by 10 percent. The first figure shows a shift by +10% for each color and the second figure -10%.

Similar to the brightness gradients but the following saturation gradients show a change of the Decimal color 16594280 by changing the saturation by 10% instead.

 16594280

 16594280

16777215

 14483536

 16742299

 12386362

 16750006

 10289189

 16757457

 8257553

 16765165

 6225922

 16772863

 4259843

 2031617

 0

 16594280

 16594280

■ 16587861

■ 16600699

■ 16581186

■ 16607374

■ 16580673

■ 16613793

■ 16620211

■ 16626886

■ 16633305

■ 16639724

16646143

Harmonies

Analogous

The Analogous color harmony consists of three colors that are next to each other on the color wheel.



15613100



16594280



15357734

Triad

The Triadic color harmony groups three colors that are evenly spaced from another and form a triangle on the color wheel.



16594280



2596117



39423

Complementary

The Complementary color scheme is a pair of colors which are on the opposite of each other on the color wheel.



16594280



3538378

Split Complementary

Split-complementary colors differ from the complementary color scheme. The scheme consists of three colors, the original color and two neighbors of the complement color.



41959



16594280



41827

Square

The Square scheme is like the rectangle color scheme, but the four colors are evenly spaced on the color wheel.



16594280



8687360



42410



34047

Rectangle

The Rectangle color scheme consists of four colors that form a rectangle on the color wheel.



16594280



13594112



42410



40447

Sweetspot

The Sweet Spot groups the original color and five complimentary colors.



16594280



16761553



13121021



8412004



0



8421504

Same Dimension

The Same Dimension uses a secret algorithm to generate beautiful new colors.



16594280



16715083



16606261



8418166



12517425



4194320

Inverse Universe

The Inverse Universe completely reimagines the original color for something new.



16594280



16715083



3526397



8418166



12517425



4194320

Previews

White Background



This preview shows how the Decimal color 16594280 looks on a white background.

Color Contrast Check

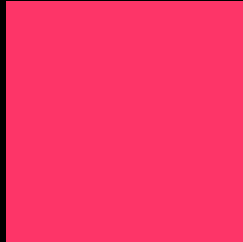
Large Text (above 18pt) WCAG AA ✓ Pass

Any Text WCAG AA × Fail

Large Text (above 18pt) WCAG AAA × Fail

Any Text WCAG AAA × Fail

Black Background



This preview shows how the Decimal color 16594280 looks on a black background.

Color Contrast Check

Large Text (above 18pt) WCAG AA ✓ Pass

Any Text WCAG AA ✓ Pass

Large Text (above 18pt) WCAG AAA ✓ Pass

Any Text WCAG AAA × Fail

If you want to check with other color combinations, try the [Color Contrast Checker](#).

Decimal 16594280 Background



This preview shows how black text looks on a background with the Decimal color 16594280.

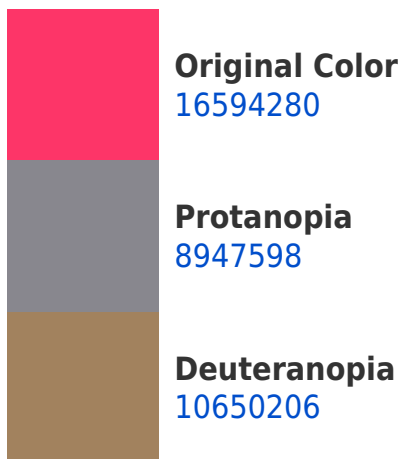


This preview shows how white text looks on a background with the Decimal color 16594280.

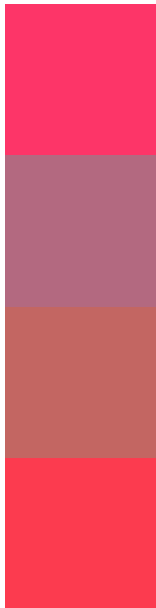
Color Blindness Simulation

Color vision deficiency is a very complex topic, and I could not describe the different causes any better than Wikipedia does, so if you want to learn more, you should check out their [article about color blindness](#).

Dichromacy



Trichromacy



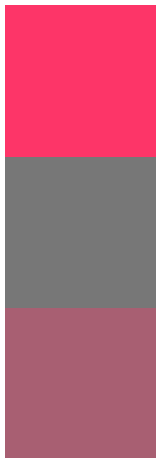
Original Color
16594280

Protanomaly
11757952

Deuteranomaly
12805730

Tritanomaly
16530255

Monochromacy



Original Color
16594280

Achromatopsia
7829367

Achromatomaly
11034482

CSS Examples

Text

The CSS property to change the color of the text to Decimal 16594280 is called "color". The color property can be set on classes, ids or directly on the HTML element.

This example shows how text in the color #FD3568 looks like.

```
.text, #text, p{  
    color:#FD3568  
}
```

If you want to add a text shadow in that color use the text-shadow property, you can generate a text shadow directly with our [CSS Text Shadow Generator](#).

Here you see how black text with a 4 pixel #FD3568 colored shadow looks like.

```
.shadow{ text-shadow: 4px 4px 2px #FD3568
}
```

Border

The CSS property to change the border of an element to Decimal 16594280 is called "border". The border property can be set on classes, ids or directly on the HTML element.

This example shows the color as border, it can be applied via the CSS property "border" or "border-color".

```
.border, #border, table{ border:4px solid
#FD3568 }
```

If only the border color should be changed use the property border-color.

```
.border{ border-color:#FD3568 }
```

If you want to add a box shadow in that color use:

Here you see how a box with a 4 pixel #FD3568 colored shadow looks like.

```
.boxshadow{ -moz-box-shadow:4px 4px 4px  
4px #FD3568; -webkit-box-shadow:4px 4px  
4px 4px #FD3568; box-shadow:4px 4px 4px  
4px #FD3568 }
```

Background

The CSS property to change the background color of an element to Decimal 16594280 is called "background". The background property can be set on classes, ids or directly on the HTML element.

```
.background, #background, body{  
background:#FD3568 }
```

If only the background color should be changed can be used:

```
.background{ background-color:#FD3568 }
```

This example shows the color as background, it is applied via the CSS property "background".

To optimize and compress your CSS code, you can use our [online CSS compressor and optimizer](#) based on csstidy. If you want to create a linear or radial gradient as background or border, check our [CSS Gradient Generator](#).

Hey! You found this booklet interesting? Support Converting Colors with the new Membership Option!

The pro membership hides all ads, plus gives you double the colors in the color bucket, and more awesome pro features!

[Learn more, Memberships starting at \\$2.50/m!](#)

**Follow me
on Twitter!**

@ConvertingColor