

Converting Colors

Decimal(16594301)

Have a look what the booklet for
Decimal(16594301) contains.

Decimal(16594301)	3
<i>Conversions</i>	4
<i>Details</i>	6
<i>Harmonies</i>	11
<i>Previews</i>	23
<i>Color Blindness Simulation</i>	26
<i>CSS Examples</i>	29

Color

Decimal(16594301)

Conversions

Conversions Part 1

Format	Color
Hex	FD357D
RGB	253, 53, 125
RGB Percent	99%, 21%, 49%
CMY	0.0078, 0.7922, 0.5098
CMYK	0.00, 0.79, 0.51, 0.01
HSL	338°, 98%, 60%
HSV	338°, 79%, 99%
XYZ	45.4828, 24.9095, 21.8128
YIQ	121.0080, 96.0880, 64.7920

Conversions

Conversions Part 2

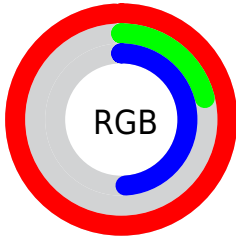
Format	Color
R_{YB}	253, 53, 125
Decimal	16594301
CIE _{Lab}	56.99, 76.49, 8.81
CIE _{LCh}	57, 76.993, 6.574
Yxy	24.9095, 0.4933, 0.2702
Android (android.graphics.Color)	4294784381 (0xFFFD357D)
YUV	121.0080, 1.9681, 115.7570
Hunter-Lab	49.9094, 75.3267, 9.0240

Details

The Decimal color **16594301** is a dark color, and the websafe version is hex **FF0066**. The color can be described as middle washed rose. A complement of this color would be **3538357**, and the grayscale version is **7960953**.

A 20% lighter version of the original color is **16742321**, and **12451917** is the 20% darker color. If you saturate the color by 10%, you get **16587885**, and if you desaturate by 10%, it is **16600717**.

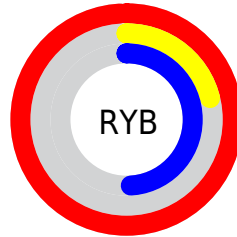
Distribution



Red (99%)

Green (21%)

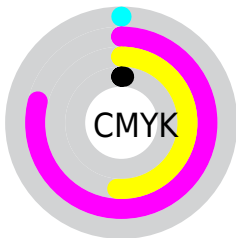
Blue (49%)



Red (99%)

Yellow (21%)

Blue (49%)

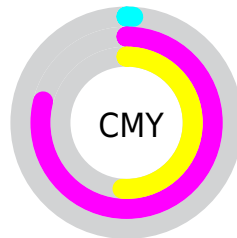


Cyan (0%)

Magenta (79%)

Yellow (51%)

Black (1%)



Cyan (1%)

Magenta (79%)

Yellow (51%)

Brightness & Saturation Gradients

These gradients show how the Decimal color 16594301 changes by changing the brightness by 10 percent. The first figure shows a shift by +10% for each color and the second figure -10%.

Similar to the brightness gradients but the following saturation gradients show a change of the Decimal color 16594301 by changing the saturation by 10% instead.

 16594301

 16594301

16777215

 14483556

 16742321

 12451917

 16750029

 10420278

 16757737

 8388642

 16765439

 6357002

 16773119

 4456451

 2228225

 0

 16594301

 16594301

■ 16587885

■ 16600717

■ 16581213

■ 16607389

■ 16580699

■ 16613806

■ 16620222

■ 16626894

■ 16633310

■ 16639726

16646143

Harmonies

Analogous

The Analogous color harmony consists of three colors that are next to each other on the color wheel.



14895808



16594301



15945276

Triad

The Triadic color harmony groups three colors that are evenly spaced from another and form a triangle on the color wheel.



16594301



5217024



40703

Complementary

The Complementary color scheme is a pair of colors which are on the opposite of each other on the color wheel.



16594301



3538357

Split Complementary

Split-complementary colors differ from the complementary color scheme. The scheme consists of three colors, the original color and two neighbors of the complement color.



42456



16594301



41808

Square

The Square scheme is like the rectangle color scheme, but the four colors are evenly spaced on the color wheel.



16594301



9997056



42646



36351

Rectangle

The Rectangle color scheme consists of four colors that form a rectangle on the color wheel.



16594301



14509575



42646



41465

Sweetspot

The Sweet Spot groups the original color and five complimentary colors.



16594301



16761560



11810301



8412008



0



8421504

Same Dimension

The Same Dimension uses a secret algorithm to generate beautiful new colors.



16594301



16715108



16601141



8418167



12517445



4194327

Inverse Universe

The Inverse Universe completely reimagines the original color for something new.



16594301



16715108



3531517



8418167



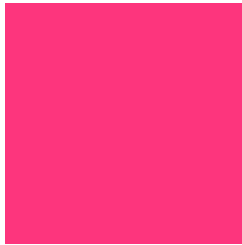
12517445



4194327

Previews

White Background



This preview shows how the Decimal color 16594301 looks on a white background.

Color Contrast Check

Large Text (above 18pt) WCAG AA ✓ Pass

Any Text WCAG AA ✗ Fail

Large Text (above 18pt) WCAG AAA ✗ Fail

Any Text WCAG AAA ✗ Fail

Black Background



This preview shows how the Decimal color 16594301 looks on a black background.

Color Contrast Check

Large Text (above 18pt) WCAG AA ✓ Pass

Any Text WCAG AA ✓ Pass

Large Text (above 18pt) WCAG AAA ✓ Pass

Any Text WCAG AAA × Fail

If you want to check with other color combinations, try the [Color Contrast Checker](#).

Decimal 16594301 Background



This preview shows how black text looks on a background with the Decimal color 16594301.



This preview shows how white text looks on a background with the Decimal color 16594301.

Color Blindness Simulation

Color vision deficiency is a very complex topic, and I could not describe the different causes any better than Wikipedia does, so if you want to learn more, you should check out their [article about color blindness](#).

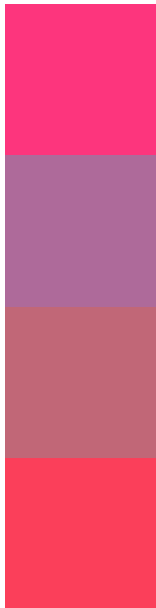
Dichromacy





Tritanopia
16401478

Trichromacy



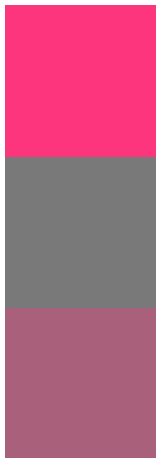
Original Color
16594301

Protanomaly
11430554

Deuteranomaly
12674935

Tritanomaly
16465754

Monochromacy



Original Color
16594301

Achromatopsia
7960953

Achromatomaly
11100282

CSS Examples

Text

The CSS property to change the color of the text to Decimal 16594301 is called "color". The color property can be set on classes, ids or directly on the HTML element.

This example shows how text in the color #FD357D looks like.

```
.text, #text, p{  
  color:#FD357D  
}
```

If you want to add a text shadow in that color use the text-shadow property, you can generate a text shadow directly with our [CSS Text Shadow Generator](#).

Here you see how black text with a 4 pixel #FD357D colored shadow looks like.

```
.shadow{ text-shadow: 4px 4px 2px #FD357D
}
```

Border

The CSS property to change the border of an element to Decimal 16594301 is called "border". The border property can be set on classes, ids or directly on the HTML element.

This example shows the color as border, it can be applied via the CSS property "border" or "border-color".

```
.border, #border, table{ border:4px solid
#FD357D }
```

If only the border color should be changed use the property `border-color`.

```
.border{ border-color:#FD357D }
```

If you want to add a box shadow in that color use:

Here you see how a box with a 4 pixel #FD357D colored shadow looks like.

```
.boxshadow{ -moz-box-shadow:4px 4px 4px  
4px #FD357D; -webkit-box-shadow:4px 4px  
4px 4px #FD357D; box-shadow:4px 4px 4px  
4px #FD357D }
```

Background

The CSS property to change the background color of an element to Decimal 16594301 is called "background". The background property can be set on classes, ids or directly on the HTML element.

```
.background, #background, body{  
background:#FD357D }
```

If only the background color should be changed can be used:

```
.background{ background-color:#FD357D }
```

This example shows the color as background, it is applied via the CSS property "background".

To optimize and compress your CSS code, you can use our [online CSS compressor and optimizer](#) based on csstidy. If you want to create a linear or radial gradient as background or border, check our [CSS Gradient Generator](#).

Hey! You found this booklet interesting? Support Converting Colors with the new Membership Option!

The pro membership hides all ads, plus gives you double the colors in the color bucket, and more awesome pro features!

[Learn more, Memberships starting at \\$2.50/m!](#)

**Follow me
on Twitter!**

@ConvertingColor