

Converting Colors

Decimal(16603517)

Have a look what the booklet for
Decimal(16603517) contains.

Decimal(16603517)	3
<i>Conversions</i>	4
<i>Details</i>	6
<i>Harmonies</i>	11
<i>Previews</i>	23
<i>Color Blindness Simulation</i>	26
<i>CSS Examples</i>	29

Color

Decimal(16603517)

Conversions

Conversions Part 1

Format	Color
Hex	FD597D
RGB	253, 89, 125
RGB Percent	99%, 35%, 49%
CMY	0.0078, 0.6510, 0.5098
CMYK	0.00, 0.65, 0.51, 0.01
HSL	347°, 98%, 67%
HSV	347°, 65%, 99%
XYZ	47.7821, 29.5081, 22.5793
YIQ	142.1400, 86.1880, 45.9640

Conversions

Conversions Part 2

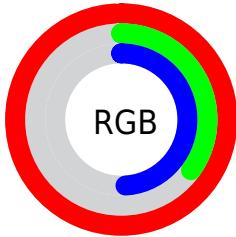
Format	Color
R _Y B	253, 89, 125
Decimal	16603517
CIE Lab	61.23, 64.69, 14.77
CIE LCh	61, 66.357, 12.861
Yxy	29.5081, 0.4784, 0.2955
Android (android.graphics.Color)	4294793597 (0xFFFD597D)
YUV	142.1400, -8.4500, 97.2242
Hunter-Lab	54.3213, 61.9496, 13.3804

Details

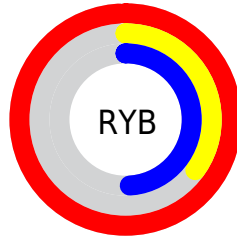
The Decimal color **16603517** is a light color, and the websafe version is hex **FF6699**. The color can be described as light muted rose. A complement of this color would be **5897689**, and the grayscale version is **9342606**.

A 20% lighter version of the original color is **16749489**, and **12522061** is the 20% darker color. If you saturate the color by 10%, you get **16597097**, and if you desaturate by 10%, it is **16609937**.

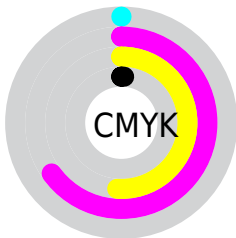
Distribution



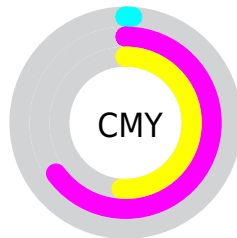
- Red (99%)
- Green (35%)
- Blue (49%)



- Red (99%)
- Yellow (35%)
- Blue (49%)



- Cyan (0%)
- Magenta (65%)
- Yellow (51%)
- Black (1%)



- Cyan (1%)
- Magenta (65%)
- Yellow (51%)

Brightness & Saturation Gradients

These gradients show how the Decimal color 16603517 changes by changing the brightness by 10 percent. The first figure shows a shift by +10% for each color and the second figure -10%.

Similar to the brightness gradients but the following saturation gradients show a change of the Decimal color 16603517 by changing the saturation by 10% instead.

 16603517

 16603517

16777215

 14563940

 16749489

 12522061

 16756941

 10485814

 16764393

 8519713

 16771839

 6553611

 4718595

 2621441

 0

 16603517

 16603517

16597097

16609937

16590422

16616612

16584002

16623032

16580664

16629452

16636128

16642547

16646143

Harmonies

Analogous

The Analogous color harmony consists of three colors that are next to each other on the color wheel.



15491000



16603517



15756102

Triad

The Triadic color harmony groups three colors that are evenly spaced from another and form a triangle on the color wheel.



16603517



5678646



42239

Complementary

The Complementary color scheme is a pair of colors which are on the opposite of each other on the color wheel.



16603517



5897689

Split Complementary

Split-complementary colors differ from the complementary color scheme. The scheme consists of three colors, the original color and two neighbors of the complement color.



44515



16603517



44399

Square

The Square scheme is like the rectangle color scheme, but the four colors are evenly spaced on the color wheel.



16603517



10066176



44972



4428543

Rectangle

The Rectangle color scheme consists of four colors that form a rectangle on the color wheel.



16603517



14318629



44972



43260

Sweetspot

The Sweet Spot groups the original color and five complimentary colors.



16603517



16764889



14113277



8413801



0



8421504

Same Dimension

The Same Dimension uses a secret algorithm to generate beautiful new colors.



16603517



16726116



16614745



8418166



12517418



4194318

Inverse Universe

The Inverse Universe completely reimagines the original color for something new.



16603517



16726116



5886461



8418166



12517418



4194318

Previews

White Background



This preview shows how the Decimal color 16603517 looks on a white background.

Color Contrast Check

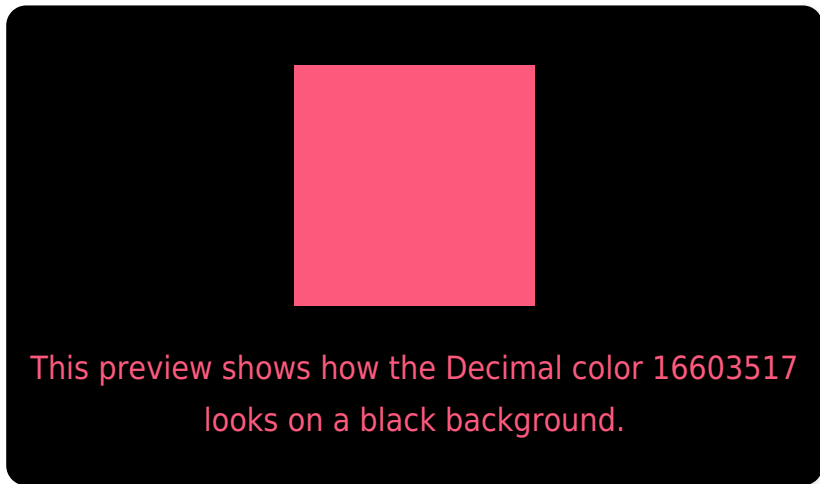
Large Text (above 18pt) WCAG AA ✓ Pass

Any Text WCAG AA × Fail

Large Text (above 18pt) WCAG AAA × Fail

Any Text WCAG AAA × Fail

Black Background



Color Contrast Check

Large Text (above 18pt) WCAG AA ✓ Pass

Any Text WCAG AA ✓ Pass

Large Text (above 18pt) WCAG AAA ✓ Pass

Any Text WCAG AAA × Fail

If you want to check with other color combinations, try the [Color Contrast Checker](#).

Decimal 16603517 Background



This preview shows how black text looks on a background with the Decimal color 16603517.



This preview shows how white text looks on a background with the Decimal color 16603517.

Color Blindness Simulation

Color vision deficiency is a very complex topic, and I could not describe the different causes any better than Wikipedia does, so if you want to learn more, you should check out their [article about color blindness](#).

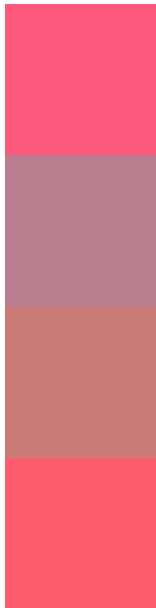
Dichromacy





Tritanopia
16473700

Trichromacy



Original Color
16603517

Protanomaly
12287632

Deuteranomaly
13269880

Tritanomaly
16538733

Monochromacy



Original Color
16603517

Achromatopsia
9342606

Achromatomaly
11959176

CSS Examples

Text

The CSS property to change the color of the text to Decimal 16603517 is called "color". The color property can be set on classes, ids or directly on the HTML element.

This example shows how text in the color #FD597D looks like.

```
.text, #text, p{  
    color:#FD597D  
}
```

If you want to add a text shadow in that color use the text-shadow property, you can generate a text shadow directly with our [CSS Text Shadow Generator](#).

Here you see how black text with a 4 pixel #FD597D colored shadow looks like.

```
.shadow{ text-shadow: 4px 4px 2px #FD597D
}
```

Border

The CSS property to change the border of an element to Decimal 16603517 is called "border". The border property can be set on classes, ids or directly on the HTML element.

This example shows the color as border, it can be applied via the CSS property "border" or "border-color".

```
.border, #border, table{ border:4px solid
#FD597D }
```

If only the border color should be changed use the property `border-color`.

```
.border{ border-color:#FD597D }
```

If you want to add a box shadow in that color use:

Here you see how a box with a 4 pixel #FD597D colored shadow looks like.

```
.boxshadow{ -moz-box-shadow:4px 4px 4px  
4px #FD597D; -webkit-box-shadow:4px 4px  
4px 4px #FD597D; box-shadow:4px 4px 4px  
4px #FD597D }
```

Background

The CSS property to change the background color of an element to Decimal 16603517 is called "background". The background property can be set on classes, ids or directly on the HTML element.

```
.background, #background, body{  
background:#FD597D }
```

If only the background color should be changed can be used:

```
.background{ background-color:#FD597D }
```

This example shows the color as background, it is applied via the CSS property "background".

To optimize and compress your CSS code, you can use our [online CSS compressor and optimizer](#) based on csstidy. If you want to create a linear or radial gradient as background or border, check our [CSS Gradient Generator](#).

Hey! You found this booklet interesting? Support Converting Colors with the new Membership Option!

The pro membership hides all ads, plus gives you double the colors in the color bucket, and more awesome pro features!

[Learn more, Memberships starting at \\$2.50/m!](#)

**Follow me
on Twitter!**

@ConvertingColor