

Converting Colors

Decimal(16603791)

Have a look what the booklet for
Decimal(16603791) contains.

Decimal(16603791)	3
<i>Conversions</i>	4
<i>Details</i>	6
<i>Harmonies</i>	11
<i>Previews</i>	23
<i>Color Blindness Simulation</i>	26
<i>CSS Examples</i>	29

Color

Decimal(16603791)

Conversions

Conversions Part 1

Format	Color
Hex	FD5A8F
RGB	253, 90, 143
RGB Percent	99%, 35%, 56%
CMY	0.0078, 0.6471, 0.4392
CMYK	0.00, 0.64, 0.43, 0.01
HSL	340°, 98%, 67%
HSV	340°, 64%, 99%
XYZ	49.1221, 30.1781, 29.2225
YIQ	144.7790, 80.1350, 51.0390

Conversions

Conversions Part 2

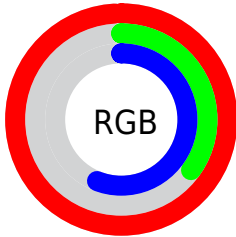
Format	Color
R _Y B	253, 90, 143
Decimal	16603791
CIE Lab	61.81, 65.87, 5.14
CIE LCh	62, 66.074, 4.465
Yxy	30.1781, 0.4526, 0.2781
Android (android.graphics.Color)	4294793871 (0xFFFD5A8F)
YUV	144.7790, -0.8770, 94.9098
Hunter-Lab	54.9346, 63.4776, 6.9149

Details

The Decimal color **16603791** is a light color, and the websafe version is hex **FF6699**. The color can be described as light muted rose. A complement of this color would be **5963208**, and the grayscale version is **9539985**.

A 20% lighter version of the original color is **16749765**, and **12522333** is the 20% darker color. If you saturate the color by 10%, you get **16597374**, and if you desaturate by 10%, it is **16610208**.

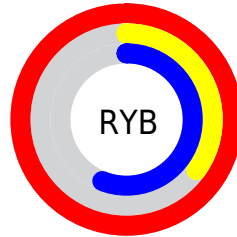
Distribution



Red (99%)

Green (35%)

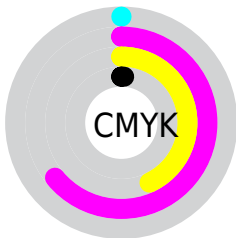
Blue (56%)



Red (99%)

Yellow (35%)

Blue (56%)

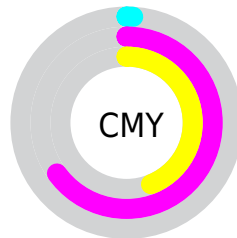


Cyan (0%)

Magenta (64%)

Yellow (43%)

Black (1%)



Cyan (1%)

Magenta (65%)

Yellow (44%)

Brightness & Saturation Gradients

These gradients show how the Decimal color 16603791 changes by changing the brightness by 10 percent. The first figure shows a shift by +10% for each color and the second figure -10%.

Similar to the brightness gradients but the following saturation gradients show a change of the Decimal color 16603791 by changing the saturation by 10% instead.

 16603791

 16603791

16777215

 14564214

 16749765

 12522333

 16757216

 10551366

 16764669

 8585264

 16772351

 6619163

 4849667

 2818049

 0

 16603791

 16603791

■ 16597374

■ 16610208

■ 16590701

■ 16616881

■ 16584284

■ 16623298

■ 16580690

■ 16629715

■ 16636388

■ 16642805

16646143

Harmonies

Analogous

The Analogous color harmony consists of three colors that are next to each other on the color wheel.



14837705



16603791



16279382

Triad

The Triadic color harmony groups three colors that are evenly spaced from another and form a triangle on the color wheel.



16603791



7185705



43519

Complementary

The Complementary color scheme is a pair of colors which are on the opposite of each other on the color wheel.



16603791



5963208

Split Complementary

Split-complementary colors differ from the complementary color scheme. The scheme consists of three colors, the original color and two neighbors of the complement color.



45014



16603791



44384

Square

The Square scheme is like the rectangle color scheme, but the four colors are evenly spaced on the color wheel.



16603791



11179264



45469



39423

Rectangle

The Rectangle color scheme consists of four colors that form a rectangle on the color wheel.



16603791



15103797



45469



44276

Sweetspot

The Sweet Spot groups the original color and five complimentary colors.



16603791



16764894



13064957



8413804



0



8421504

Same Dimension

The Same Dimension uses a secret algorithm to generate beautiful new colors.



16603791



16726906



16610650



8418167



12517438



4194325

Inverse Universe

The Inverse Universe completely reimagines the original color for something new.



16603791



16726906



5956349



8418167



12517438



4194325

Previews

White Background



This preview shows how the Decimal color 16603791 looks on a white background.

Color Contrast Check

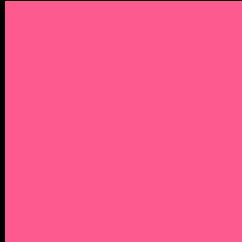
Large Text (above 18pt) WCAG AA × Fail

Any Text WCAG AA × Fail

Large Text (above 18pt) WCAG AAA × Fail

Any Text WCAG AAA × Fail

Black Background



This preview shows how the Decimal color 16603791 looks on a black background.

Color Contrast Check

Large Text (above 18pt) WCAG AA ✓ Pass

Any Text WCAG AA ✓ Pass

Large Text (above 18pt) WCAG AAA ✓ Pass

Any Text WCAG AAA ✓ Pass

If you want to check with other color combinations, try the [Color Contrast Checker](#).

Decimal 16603791 Background



This preview shows how black text looks on a background with the Decimal color 16603791.



This preview shows how white text looks on a background with the Decimal color 16603791.

Color Blindness Simulation

Color vision deficiency is a very complex topic, and I could not describe the different causes any better than Wikipedia does, so if you want to learn more, you should check out their [article about color blindness](#).

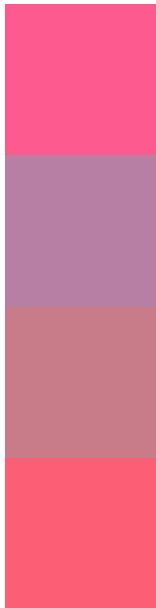
Dichromacy





Tritanopia
16409192

Trichromacy



Original Color
16603791

Protanomaly
12091301

Deuteranomaly
13139082

Tritanomaly
16473974

Monochromacy



Original Color
16603791

Achromatopsia
9539985

Achromatomaly
12090768

CSS Examples

Text

The CSS property to change the color of the text to Decimal 16603791 is called "color". The color property can be set on classes, ids or directly on the HTML element.

This example shows how text in the color #FD5A8F looks like.

```
.text, #text, p{  
    color:#FD5A8F  
}
```

If you want to add a text shadow in that color use the text-shadow property, you can generate a text shadow directly with our [CSS Text Shadow Generator](#).

Here you see how black text with a 4 pixel #FD5A8F colored shadow looks like.

```
.shadow{ text-shadow: 4px 4px 2px #FD5A8F
}
```

Border

The CSS property to change the border of an element to Decimal 16603791 is called "border". The border property can be set on classes, ids or directly on the HTML element.

This example shows the color as border, it can be applied via the CSS property "border" or "border-color".

```
.border, #border, table{ border:4px solid
#FD5A8F }
```

If only the border color should be changed use the property `border-color`.

```
.border{ border-color:#FD5A8F }
```

If you want to add a box shadow in that color use:

Here you see how a box with a 4 pixel #FD5A8F colored shadow looks like.

```
.boxshadow{ -moz-box-shadow:4px 4px 4px  
4px #FD5A8F; -webkit-box-shadow:4px 4px  
4px 4px #FD5A8F; box-shadow:4px 4px 4px  
4px #FD5A8F }
```

Background

The CSS property to change the background color of an element to Decimal 16603791 is called "background". The background property can be set on classes, ids or directly on the HTML element.

```
.background, #background, body{  
background:#FD5A8F }
```

If only the background color should be changed can be used:

```
.background{ background-color:#FD5A8F }
```

This example shows the color as background, it is applied via the CSS property "background".

To optimize and compress your CSS code, you can use our [online CSS compressor and optimizer](#) based on csstidy. If you want to create a linear or radial gradient as background or border, check our [CSS Gradient Generator](#).

Hey! You found this booklet interesting? Support Converting Colors with the new Membership Option!

The pro membership hides all ads, plus gives you double the colors in the color bucket, and more awesome pro features!

[Learn more, Memberships starting at \\$2.50/m!](#)

**Follow me
on Twitter!**

@ConvertingColor