

Converting Colors

Decimal(16613994)

Have a look what the booklet for
Decimal(16613994) contains.

Decimal(16613994)	3
<i>Conversions</i>	4
<i>Details</i>	6
<i>Harmonies</i>	11
<i>Previews</i>	23
<i>Color Blindness Simulation</i>	26
<i>CSS Examples</i>	29

Color

Decimal(16613994)

Conversions

Conversions Part 1

Format	Color
Hex	FD826A
RGB	253, 130, 106
RGB Percent	99%, 51%, 42%
CMY	0.0078, 0.4902, 0.5843
CMYK	0.00, 0.49, 0.58, 0.01
HSL	10°, 97%, 70%
HSV	10°, 58%, 99%
XYZ	51.0922, 37.8885, 18.2560
YIQ	164.0410, 81.0120, 18.6120

Conversions

Conversions Part 2

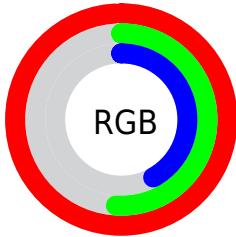
Format	Color
R _Y B	253, 135, 106
Decimal	16613994
CIE Lab	67.94, 44.74, 34.44
CIE LCh	68, 56.460, 37.585
Yxy	37.8885, 0.4764, 0.3533
Android (android.graphics.Color)	4294804074 (0xFFFD826A)
YUV	164.0410, -28.6142, 78.0170
Hunter-Lab	61.5536, 40.4438, 25.5029

Details

The Decimal color **16613994** is a light color, and the websafe version is hex **FF9966**. A complement of this color would be **7005693**, and the grayscale version is **10790052**.

A 20% lighter version of the original color is **16759198**, and **12537146** is the 20% darker color. If you saturate the color by 10%, you get **16608593**, and if you desaturate by 10%, it is **16619395**.

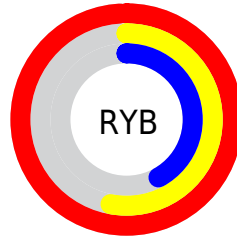
Distribution



Red (99%)

Green (51%)

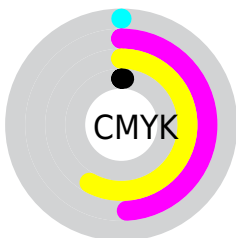
Blue (42%)



Red (99%)

Yellow (53%)

Blue (42%)

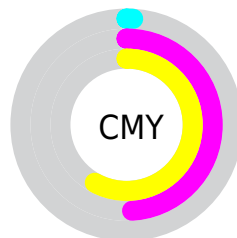


Cyan (0%)

Magenta (49%)

Yellow (58%)

Black (1%)



Cyan (1%)

Magenta (49%)

Yellow (58%)

Brightness & Saturation Gradients

These gradients show how the Decimal color 16613994 changes by changing the brightness by 10 percent. The first figure shows a shift by +10% for each color and the second figure -10%.

Similar to the brightness gradients but the following saturation gradients show a change of the Decimal color 16613994 by changing the saturation by 10% instead.

 16613994

 16613994

16777215

 14575442

 16759198

 12537146

 16766393

 10564388

 16773845

 8590862

 16777201

 6684672

 4784128

 3080194

 0

 16613994

 16613994

16608593

16619395

16603191

16624797

16597534

16630454

16592133

16635855

16591104

16641257

16646143

Harmonies

Analogous

The Analogous color harmony consists of three colors that are next to each other on the color wheel.



16742555



16613994



14783814

Triad

The Triadic color harmony groups three colors that are evenly spaced from another and form a triangle on the color wheel.



16613994



2735229



6137855

Complementary

The Complementary color scheme is a pair of colors which are on the opposite of each other on the color wheel.



16613994



7005693

Split Complementary

Split-complementary colors differ from the complementary color scheme. The scheme consists of three colors, the original color and two neighbors of the complement color.



46591



16613994



49073

Square

The Square scheme is like the rectangle color scheme, but the four colors are evenly spaced on the color wheel.



16613994



8434769



48610



12227575

Rectangle

The Rectangle color scheme consists of four colors that form a rectangle on the color wheel.



16613994



12951866



48610



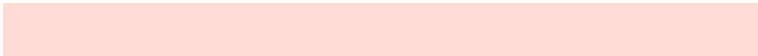
1682687

Sweetspot

The Sweet Spot groups the original color and five complimentary colors.



16613994



16767956



16607975



8415846



0



8421504

Same Dimension

The Same Dimension uses a secret algorithm to generate beautiful new colors.



16613994



16738893



16632426



8418675



12525312



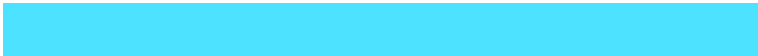
4196864

Inverse Universe

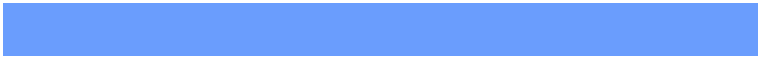
The Inverse Universe completely reimagines the original color for something new.



7005693



5104383



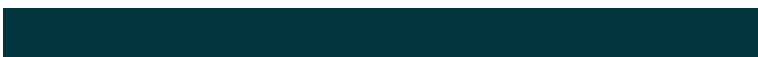
6987261



7568768



41151



13632

Previews

White Background



This preview shows how the Decimal color 16613994 looks on a white background.

Color Contrast Check

Large Text (above 18pt) WCAG AA × Fail

Any Text WCAG AA × Fail

Large Text (above 18pt) WCAG AAA × Fail

Any Text WCAG AAA × Fail

Black Background



This preview shows how the Decimal color 16613994 looks on a black background.

Color Contrast Check

Large Text (above 18pt) WCAG AA ✓ Pass

Any Text WCAG AA ✓ Pass

Large Text (above 18pt) WCAG AAA ✓ Pass

Any Text WCAG AAA ✓ Pass

If you want to check with other color combinations, try the [Color Contrast Checker](#).

Decimal 16613994 Background



This preview shows how black text looks on a background with the Decimal color 16613994.



This preview shows how white text looks on a background with the Decimal color 16613994.

Color Blindness Simulation

Color vision deficiency is a very complex topic, and I could not describe the different causes any better than Wikipedia does, so if you want to learn more, you should check out their [article about color blindness](#).

Dichromacy





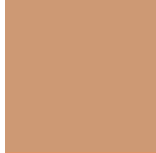
Tritanopia
16744071

Trichromacy



Original Color

16613994



Protanomaly

13474164



Deuteranomaly

14455911



Tritanomaly

16678780

Monochromacy



Original Color

16613994



Achromatopsia

10790052



Achromatomaly

12884111

CSS Examples

Text

The CSS property to change the color of the text to Decimal 16613994 is called "color". The color property can be set on classes, ids or directly on the HTML element.

This example shows how text in the color #FD826A looks like.

```
.text, #text, p{  
    color:#FD826A  
}
```

If you want to add a text shadow in that color use the text-shadow property, you can generate a text shadow directly with our [CSS Text Shadow Generator](#).

Here you see how black text with a 4 pixel #FD826A colored shadow looks like.

```
.shadow{ text-shadow: 4px 4px 2px #FD826A
}
```

Border

The CSS property to change the border of an element to Decimal 16613994 is called "border". The border property can be set on classes, ids or directly on the HTML element.

This example shows the color as border, it can be applied via the CSS property "border" or "border-color".

```
.border, #border, table{ border:4px solid
#FD826A }
```

If only the border color should be changed use the property `border-color`.

```
.border{ border-color:#FD826A }
```

If you want to add a box shadow in that color use:

Here you see how a box with a 4 pixel #FD826A colored shadow looks like.

```
.boxshadow{ -moz-box-shadow:4px 4px 4px  
4px #FD826A; -webkit-box-shadow:4px 4px  
4px 4px #FD826A; box-shadow:4px 4px 4px  
4px #FD826A }
```

Background

The CSS property to change the background color of an element to Decimal 16613994 is called "background". The background property can be set on classes, ids or directly on the HTML element.

```
.background, #background, body{  
background:#FD826A }
```

If only the background color should be changed can be used:

```
.background{ background-color:#FD826A }
```

This example shows the color as background, it is applied via the CSS property "background".

To optimize and compress your CSS code, you can use our [online CSS compressor and optimizer](#) based on csstidy. If you want to create a linear or radial gradient as background or border, check our [CSS Gradient Generator](#).

Hey! You found this booklet interesting? Support Converting Colors with the new Membership Option!

The pro membership hides all ads, plus gives you double the colors in the color bucket, and more awesome pro features!

[Learn more, Memberships starting at \\$2.50/m!](#)

**Follow me
on Twitter!**

@ConvertingColor