

# Converting Colors

Decimal(16615590)

Have a look what the booklet for  
Decimal(16615590) contains.

<b>Decimal(16615590)</b> .....	3
<i><b>Conversions</b></i> .....	4
<i><b>Details</b></i> .....	6
<i><b>Harmonies</b></i> .....	11
<i><b>Previews</b></i> .....	23
<i><b>Color Blindness Simulation</b></i> .....	26
<i><b>CSS Examples</b></i> .....	29

# **Color**

**Decimal(16615590)**

# Conversions

## Conversions Part 1

Format	Color
Hex	FD88A6
RGB	253, 136, 166
RGB Percent	99%, 53%, 65%
CMY	0.0078, 0.4667, 0.3490
CMYK	0.00, 0.46, 0.34, 0.01
HSL	345°, 97%, 76%
HSV	345°, 46%, 99%
XYZ	56.1951, 41.2441, 41.0755
YIQ	174.4030, 60.1020, 34.1340

# Conversions

## Conversions Part 2

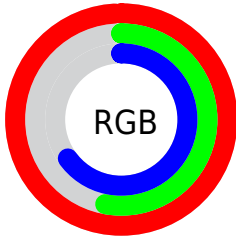
Format	Color
R <sub>Y</sub> B	253, 136, 166
Decimal	16615590
CIE Lab	70.35, 47.47, 4.36
CIE LCh	70, 47.669, 5.250
Yxy	41.2441, 0.4057, 0.2978
Android (android.graphics.Color)	4294805670 (0xFFFD88A6)
YUV	174.4030, -4.1427, 68.9296
Hunter-Lab	64.2216, 43.8031, 7.0338

# Details

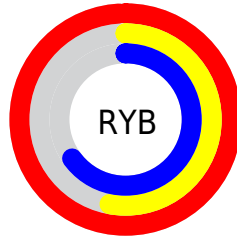
The Decimal color **16615590** is a light color, and the websafe version is hex **FF99CC**. A complement of this color would be **8977887**, and the grayscale version is **11447982**.

A 20% lighter version of the original color is **16761053**, and **12669554** is the 20% darker color. If you saturate the color by 10%, you get **16609171**, and if you desaturate by 10%, it is **16622009**.

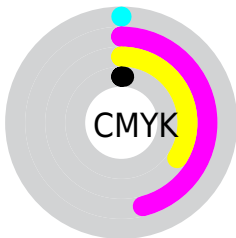
# Distribution



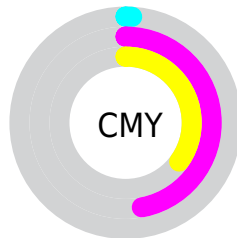
- Red (99%)
- Green (53%)
- Blue (65%)



- Red (99%)
- Yellow (53%)
- Blue (65%)



- Cyan (0%)
- Magenta (46%)
- Yellow (34%)
- Black (1%)



- Cyan (1%)
- Magenta (47%)
- Yellow (35%)

# Brightness & Saturation Gradients

These gradients show how the Decimal color 16615590 changes by changing the brightness by 10 percent. The first figure shows a shift by +10% for each color and the second figure -10%.

Similar to the brightness gradients but the following saturation gradients show a change of the Decimal color 16615590 by changing the saturation by 10% instead.



 16615590

 16615590

16777215

 14642572

 16761053

 12669554

 16768249

 10762330

 16775679

 8919875

 7077933

 5242904

 3670018

 983040

 0

 16615590

 16615590

 16609171

 16622009

 16602496

 16628684

 16596078

 16635102

 16589659

 16641521

 16582984

16646143

 16580673

# Harmonies

## Analogous

The Analogous color harmony consists of three colors that are next to each other on the color wheel.



15240913



16615590



16420476

# Triad

The Triadic color harmony groups three colors that are evenly spaced from another and form a triangle on the color wheel.



16615590



9549923



47866

# Complementary

The Complementary color scheme is a pair of colors which are on the opposite of each other on the color wheel.



16615590



8977887

# Split Complementary

Split-complementary colors differ from the complementary color scheme. The scheme consists of three colors, the original color and two neighbors of the complement color.



49629



16615590



5816198

# Square

The Square scheme is like the rectangle color scheme, but the four colors are evenly spaced on the color wheel.



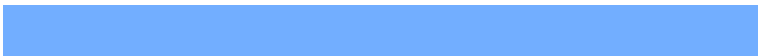
16615590



12561491



49843



7515903

# Rectangle

The Rectangle color scheme consists of four colors that form a rectangle on the color wheel.



16615590



15571046



49843



48626



# Sweetspot

The Sweet Spot groups the original color and five complimentary colors.



16615590



16767972



14584061



8415855



0



8421504



# Same Dimension

The Same Dimension uses a secret algorithm to generate beautiful new colors.



16615590



16741271



16622472



8418166



12517425



4194320



# Inverse Universe

The Inverse Universe completely reimagines the original color for something new.



16615590



16741271



8971005



8418166



12517425

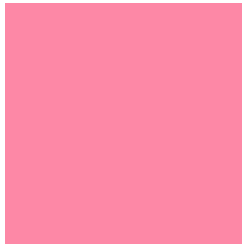


4194320



# Previews

## White Background



This preview shows how the Decimal color 16615590 looks on a white background.

## Color Contrast Check

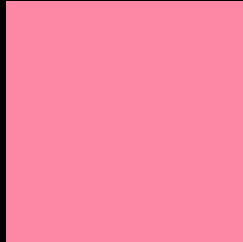
Large Text (above 18pt) WCAG AA × Fail

Any Text WCAG AA × Fail

Large Text (above 18pt) WCAG AAA × Fail

Any Text WCAG AAA × Fail

# Black Background



This preview shows how the Decimal color 16615590 looks on a black background.

## Color Contrast Check

Large Text (above 18pt) WCAG AA ✓ Pass

Any Text WCAG AA ✓ Pass

Large Text (above 18pt) WCAG AAA ✓ Pass

Any Text WCAG AAA ✓ Pass

If you want to check with other color combinations, try the [Color Contrast Checker](#).



## Decimal 16615590 Background



This preview shows how black text looks on a background with the Decimal color 16615590.




This preview shows how white text looks on a background with the Decimal color 16615590.

# Color Blindness Simulation

Color vision deficiency is a very complex topic, and I could not describe the different causes any better than Wikipedia does, so if you want to learn more, you should check out their [article about color blindness](#).

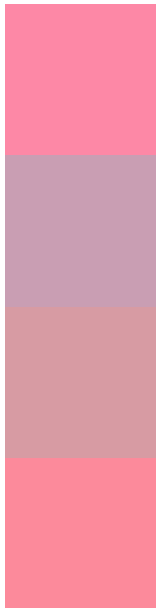
## Dichromacy





**Tritanopia**  
16550805

# Trichromacy



**Original Color**  
16615590

**Protanomaly**  
13213363

**Deuteranomaly**  
14130083

**Tritanomaly**  
16550555

# Monochromacy



**Original Color**  
16615590

**Achromatopsia**  
11447982

**Achromatomaly**  
13344939

# CSS Examples

## Text

The CSS property to change the color of the text to Decimal 16615590 is called "color". The color property can be set on classes, ids or directly on the HTML element.

This example shows how text in the color #FD88A6 looks like.

```
.text, #text, p{  
    color:#FD88A6  
}
```

If you want to add a text shadow in that color use the text-shadow property, you can generate a text shadow directly with our [CSS Text Shadow Generator](#).

Here you see how black text with a 4 pixel #FD88A6 colored shadow looks like.

```
.shadow{ text-shadow: 4px 4px 2px #FD88A6
}
```

## Border

The CSS property to change the border of an element to Decimal 16615590 is called "border". The border property can be set on classes, ids or directly on the HTML element.

This example shows the color as border, it can be applied via the CSS property "border" or "border-color".

```
.border, #border, table{ border:4px solid
#FD88A6 }
```

If only the border color should be changed use the property `border-color`.

```
.border{ border-color:#FD88A6 }
```

If you want to add a box shadow in that color use:

Here you see how a box with a 4 pixel #FD88A6 colored shadow looks like.

```
.boxshadow{ -moz-box-shadow:4px 4px 4px  
4px #FD88A6; -webkit-box-shadow:4px 4px  
4px 4px #FD88A6; box-shadow:4px 4px 4px  
4px #FD88A6 }
```

# Background

The CSS property to change the background color of an element to Decimal 16615590 is called "background". The background property can be set on classes, ids or directly on the HTML element.

```
.background, #background, body{  
background:#FD88A6 }
```

If only the background color should be changed can be used:

```
.background{ background-color:#FD88A6 }
```

This example shows the color as background, it is applied via the CSS property "background".

To optimize and compress your CSS code, you can use our [online CSS compressor and optimizer](#) based on csstidy. If you want to create a linear or radial gradient as background or border, check our [CSS Gradient Generator](#).



Hey! You found this booklet interesting? Support Converting Colors with the new Membership Option!

The pro membership hides all ads, plus gives you double the colors in the color bucket, and more awesome pro features!

**[Learn more, Memberships starting at \\$2.50/m!](#)**

**Follow me  
on Twitter!**

@ConvertingColor