

# Converting Colors

Decimal(16627355)

Have a look what the booklet for  
Decimal(16627355) contains.

<b>Decimal(16627355)</b> .....	3
<i><b>Conversions</b></i> .....	4
<i><b>Details</b></i> .....	6
<i><b>Harmonies</b></i> .....	11
<i><b>Previews</b></i> .....	23
<i><b>Color Blindness Simulation</b></i> .....	26
<i><b>CSS Examples</b></i> .....	29

# **Color**

**Decimal(16627355)**

# Conversions

## Conversions Part 1

<b>Format</b>	<b>Color</b>
Hex	FDB69B
RGB	253, 182, 155
RGB Percent	99%, 71%, 61%
CMY	0.0078, 0.2863, 0.3922
CMYK	0.00, 0.28, 0.39, 0.01
HSL	17°, 96%, 80%
HSV	17°, 39%, 99%
XYZ	63.1524, 56.7051, 38.6270
YIQ	200.1510, 50.9830, 6.6550

# Conversions

## Conversions Part 2

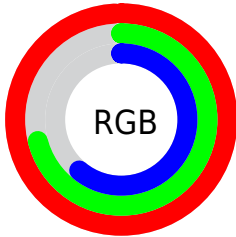
<b>Format</b>	<b>Color</b>
<b>R<sub>YB</sub></b>	253, 192, 155
Decimal	16627355
CIE <sub>Lab</sub>	80.01, 22.45, 23.96
CIE <sub>LCh</sub>	80, 32.834, 46.861
Yxy	56.7051, 0.3985, 0.3578
Android (android.graphics.Color)	4294817435 (0xFFFD69B)
YUV	200.1510, -22.2594, 46.3486
Hunter-Lab	75.3028, 17.9184, 22.2988

# Details

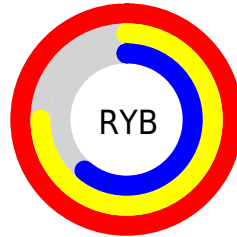
The Decimal color **16627355** is a light color, and the websafe version is hex **FFCC99**. A complement of this color would be **10216189**, and the grayscale version is **13158600**.

A 20% lighter version of the original color is **16772818**, and **12747112** is the 20% darker color. If you saturate the color by 10%, you get **16622722**, and if you desaturate by 10%, it is **16631988**.

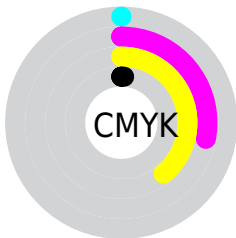
# Distribution



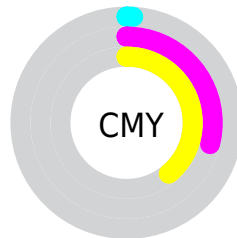
- Red (99%)
- Green (71%)
- Blue (61%)



- Red (99%)
- Yellow (75%)
- Blue (61%)



- Cyan (0%)
- Magenta (28%)
- Yellow (39%)
- Black (1%)



- Cyan (1%)
- Magenta (29%)
- Yellow (39%)

# Brightness & Saturation Gradients

These gradients show how the Decimal color 16627355 changes by changing the brightness by 10 percent. The first figure shows a shift by +10% for each color and the second figure -10%.

Similar to the brightness gradients but the following saturation gradients show a change of the Decimal color 16627355 by changing the saturation by 10% instead.



 16627355

 16627355

16777215

 14654337

 16772818

 12747112


 16777198

 10905423

 9064248

 7288610

 5513485

 3803904

 2359297

 0

16627355

16627355

16622722

16631988

16617832

16636878

16613199

16641511

16608566

16646143

16603676

16599043

16598528

# Harmonies

## Analogous

The Analogous color harmony consists of three colors that are next to each other on the color wheel.



16756918



16627355



15253643

# Triad

The Triadic color harmony groups three colors that are evenly spaced from another and form a triangle on the color wheel.



16627355



8705719



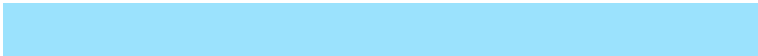
12108799

# Complementary

The Complementary color scheme is a pair of colors which are on the opposite of each other on the color wheel.



16627355



10216189

# Split Complementary

Split-complementary colors differ from the complementary color scheme. The scheme consists of three colors, the original color and two neighbors of the complement color.



9162239



16627355



6936535

# Square

The Square scheme is like the rectangle color scheme, but the four colors are evenly spaced on the color wheel.



16627355



11063964



7001330



14727665

# Rectangle

The Rectangle color scheme consists of four colors that form a rectangle on the color wheel.



16627355



14010249



7001330



11126783

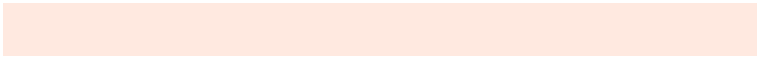


# Sweetspot

The Sweet Spot groups the original color and five complimentary colors.



16627355



16771552



16620515



8418158



0



8421504



# Same Dimension

The Same Dimension uses a secret algorithm to generate beautiful new colors.



16627355



16755338



16639643



8418931



12530944

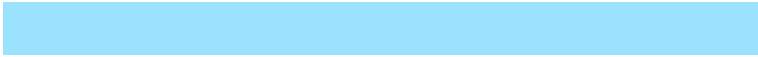


4198912

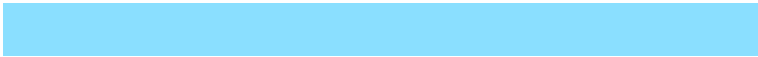


# Inverse Universe

The Inverse Universe completely reimagines the original color for something new.



10216189



9101311



10203901



7568512



35775



11840



# Previews

## White Background



This preview shows how the Decimal color 16627355 looks on a white background.

## Color Contrast Check

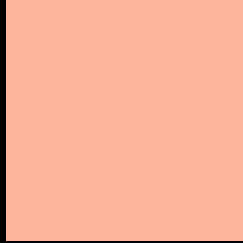
Large Text (above 18pt) WCAG AA × Fail

Any Text WCAG AA × Fail

Large Text (above 18pt) WCAG AAA × Fail

Any Text WCAG AAA × Fail

# Black Background



This preview shows how the Decimal color 16627355 looks on a black background.

## Color Contrast Check

Large Text (above 18pt) WCAG AA ✓ Pass

Any Text WCAG AA ✓ Pass

Large Text (above 18pt) WCAG AAA ✓ Pass

Any Text WCAG AAA ✓ Pass

If you want to check with other color combinations, try the [Color Contrast Checker](#).



## Decimal 16627355 Background



This preview shows how black text looks on a background with the Decimal color 16627355.



This preview shows how white text looks on a background with the Decimal color 16627355.

# Color Blindness Simulation

Color vision deficiency is a very complex topic, and I could not describe the different causes any better than Wikipedia does, so if you want to learn more, you should check out their [article about color blindness](#).

## Dichromacy





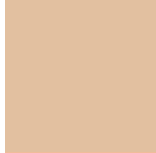
**Tritanopia**  
16757439

# Trichromacy



**Original Color**

16627355



**Protanomaly**

14860448



**Deuteranomaly**

15776922



**Tritanomaly**

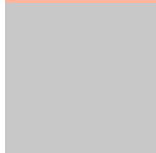
16692146

# Monochromacy



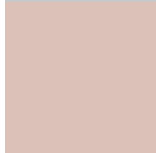
**Original Color**

16627355



**Achromatopsia**

13158600



**Achromatomaly**

14401976

# CSS Examples

## Text

The CSS property to change the color of the text to Decimal 16627355 is called "color". The color property can be set on classes, ids or directly on the HTML element.

This example shows how text in the color #FDB69B looks like.

```
.text, #text, p{  
    color:#FDB69B  
}
```

If you want to add a text shadow in that color use the text-shadow property, you can generate a text shadow directly with our [CSS Text Shadow Generator](#).

Here you see how black text with a 4 pixel #FDB69B colored shadow looks like.

```
.shadow{ text-shadow: 4px 4px 2px #FDB69B
}
```

## Border

The CSS property to change the border of an element to Decimal 16627355 is called "border". The border property can be set on classes, ids or directly on the HTML element.

This example shows the color as border, it can be applied via the CSS property "border" or "border-color".

```
.border, #border, table{ border:4px solid
#FDB69B }
```

If only the border color should be changed use the property `border-color`.

```
.border{ border-color:#FDB69B }
```

If you want to add a box shadow in that color use:

Here you see how a box with a 4 pixel #FDB69B colored shadow looks like.

```
.boxshadow{ -moz-box-shadow:4px 4px 4px  
4px #FDB69B; -webkit-box-shadow:4px 4px  
4px 4px #FDB69B; box-shadow:4px 4px 4px  
4px #FDB69B }
```

# Background

The CSS property to change the background color of an element to Decimal 16627355 is called "background". The background property can be set on classes, ids or directly on the HTML element.

```
.background, #background, body{  
background:#FDB69B }
```

If only the background color should be changed can be used:

```
.background{ background-color:#FDB69B }
```

This example shows the color as background, it is applied via the CSS property "background".

To optimize and compress your CSS code, you can use our [online CSS compressor and optimizer](#) based on csstidy. If you want to create a linear or radial gradient as background or border, check our [CSS Gradient Generator](#).



Hey! You found this booklet interesting? Support Converting Colors with the new Membership Option!

The pro membership hides all ads, plus gives you double the colors in the color bucket, and more awesome pro features!

**[Learn more, Memberships starting at \\$2.50/m!](#)**

**Follow me  
on Twitter!**

@ConvertingColor