

# Converting Colors

Decimal(16629177)

Have a look what the booklet for  
Decimal(16629177) contains.

<b>Decimal(16629177)</b> .....	3
<i><b>Conversions</b></i> .....	4
<i><b>Details</b></i> .....	6
<i><b>Harmonies</b></i> .....	11
<i><b>Previews</b></i> .....	23
<i><b>Color Blindness Simulation</b></i> .....	26
<i><b>CSS Examples</b></i> .....	29

# **Color**

**Decimal(16629177)**

# Conversions

## Conversions Part 1

Format	Color
Hex	FDBDB9
RGB	253, 189, 185
RGB Percent	99%, 74%, 73%
CMY	0.0078, 0.2588, 0.2745
CMYK	0.00, 0.25, 0.27, 0.01
HSL	4°, 94%, 86%
HSV	4°, 27%, 99%
XYZ	67.4626, 60.7806, 54.0751
YIQ	207.6800, 39.4280, 12.3240

# Conversions

## Conversions Part 2

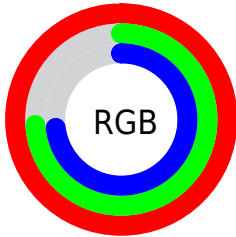
Format	Color
R <sub>Y</sub> B	253, 189, 185
Decimal	16629177
CIE Lab	82.26, 22.47, 11.03
CIE LCh	82, 25.035, 26.146
Yxy	60.7806, 0.3700, 0.3334
Android (android.graphics.Color)	4294819257 (0xFFFDDB9)
YUV	207.6800, -11.1812, 39.7456
Hunter-Lab	77.9619, 18.0275, 13.4493

# Details

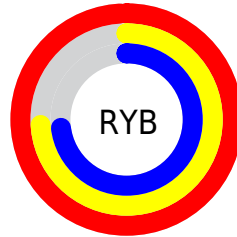
The Decimal color **16629177** is a light color, and the websafe version is hex **FFCCCC**. A complement of this color would be **12188157**, and the grayscale version is **13684944**.

A 20% lighter version of the original color is **16774897**, and **12814212** is the 20% darker color. If you saturate the color by 10%, you get **16623008**, and if you desaturate by 10%, it is **16635346**.

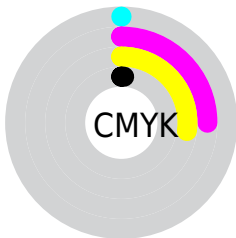
# Distribution



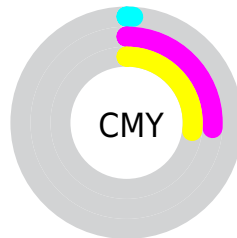
- Red (99%)
- Green (74%)
- Blue (73%)



- Red (99%)
- Yellow (74%)
- Blue (73%)



- Cyan (0%)
- Magenta (25%)
- Yellow (27%)
- Black (1%)




- Cyan (1%)
- Magenta (26%)
- Yellow (27%)

# Brightness & Saturation Gradients

These gradients show how the Decimal color 16629177 changes by changing the brightness by 10 percent. The first figure shows a shift by +10% for each color and the second figure -10%.

Similar to the brightness gradients but the following saturation gradients show a change of the Decimal color 16629177 by changing the saturation by 10% instead.



 16629177	 16629177
 16777215	 14721694
 16774897	 12814212
	 10972779
	 9196883
	 7421244
	 5711398
	 4067345
	 2621440
	 0

 16629177

 16629177

 16623008

 16635346

 16616838

 16641516

 16610925

16646143

 16604756

 16598586

 16592417

 16586248

 16584448

# Harmonies

## Analogous

The Analogous color harmony consists of three colors that are next to each other on the color wheel.



16366801



16629177



16040614

# Triad

The Triadic color harmony groups three colors that are evenly spaced from another and form a triangle on the color wheel.



16629177



11392946



11391227

# Complementary

The Complementary color scheme is a pair of colors which are on the opposite of each other on the color wheel.



16629177



12188157

# Split Complementary

Split-complementary colors differ from the complementary color scheme. The scheme consists of three colors, the original color and two neighbors of the complement color.



9688819



16629177



9886409

# Square

The Square scheme is like the rectangle color scheme, but the four colors are evenly spaced on the color wheel.



16629177



13160866



9165536



13486327

# Rectangle

The Rectangle color scheme consists of four colors that form a rectangle on the color wheel.



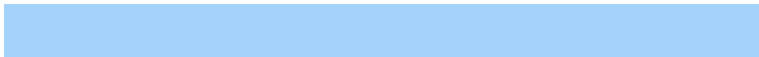
16629177



15320992



9165536



10736378

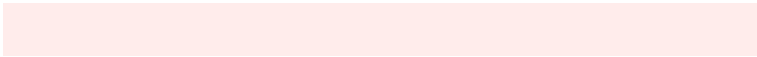


# Sweetspot

The Sweet Spot groups the original color and five complimentary colors.



16629177



16772331



16628218



8418419



0



8421504



# Same Dimension

The Same Dimension uses a secret algorithm to generate beautiful new colors.



16629177



16757421



16637625



8418419



12520192



4195328



# Inverse Universe

The Inverse Universe completely reimagines the original color for something new.



12188157



11401983



12179709



7569280



46271



15424



# Previews

## White Background



This preview shows how the Decimal color 16629177 looks on a white background.

## Color Contrast Check

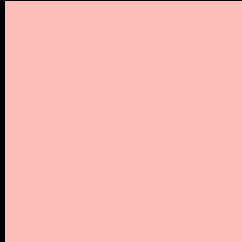
Large Text (above 18pt) WCAG AA × Fail

Any Text WCAG AA × Fail

Large Text (above 18pt) WCAG AAA × Fail

Any Text WCAG AAA × Fail

# Black Background



This preview shows how the Decimal color 16629177 looks on a black background.

## Color Contrast Check

Large Text (above 18pt) WCAG AA ✓ Pass

Any Text WCAG AA ✓ Pass

Large Text (above 18pt) WCAG AAA ✓ Pass

Any Text WCAG AAA ✓ Pass

If you want to check with other color combinations, try the [Color Contrast Checker](#).



## Decimal 16629177 Background



This preview shows how black text looks on a background with the Decimal color 16629177.

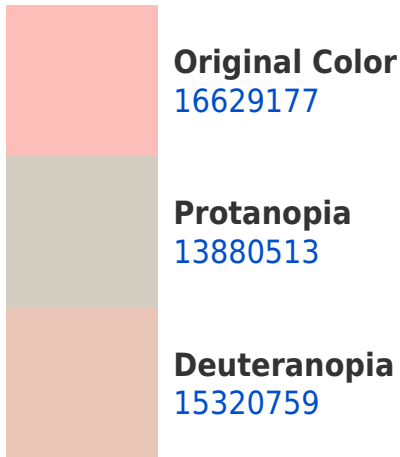


This preview shows how white text looks on a background with the Decimal color 16629177.

# Color Blindness Simulation

Color vision deficiency is a very complex topic, and I could not describe the different causes any better than Wikipedia does, so if you want to learn more, you should check out their [article about color blindness](#).

## Dichromacy





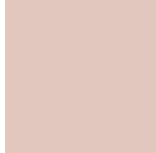
**Tritanopia**  
16759753

# Trichromacy



**Original Color**

16629177



**Protanomaly**

14862270



**Deuteranomaly**

15778744



**Tritanomaly**

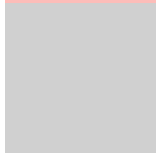
16694467

# Monochromacy



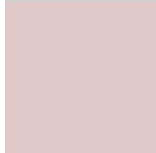
**Original Color**

16629177



**Achromatopsia**

13684944



**Achromatomaly**

14731720

# CSS Examples

## Text

The CSS property to change the color of the text to Decimal 16629177 is called "color". The color property can be set on classes, ids or directly on the HTML element.

This example shows how text in the color #FDBDB9 looks like.

```
.text, #text, p{  
    color:#FDBDB9  
}
```

If you want to add a text shadow in that color use the text-shadow property, you can generate a text shadow directly with our [CSS Text Shadow Generator](#).

Here you see how black text with a 4 pixel #FDBDB9 colored shadow looks like.

```
.shadow{ text-shadow: 4px 4px 2px #FDBDB9
}
```

## Border

The CSS property to change the border of an element to Decimal 16629177 is called "border". The border property can be set on classes, ids or directly on the HTML element.

This example shows the color as border, it can be applied via the CSS property "border" or "border-color".

```
.border, #border, table{ border:4px solid
#FDBDB9 }
```

If only the border color should be changed use the property `border-color`.

```
.border{ border-color:#FDBDB9 }
```

If you want to add a box shadow in that color use:

Here you see how a box with a 4 pixel #FDBDB9 colored shadow looks like.

```
.boxshadow{ -moz-box-shadow:4px 4px 4px  
4px #FDBDB9; -webkit-box-shadow:4px 4px  
4px 4px #FDBDB9; box-shadow:4px 4px 4px  
4px #FDBDB9 }
```

# Background

The CSS property to change the background color of an element to Decimal 16629177 is called "background". The background property can be set on classes, ids or directly on the HTML element.

```
.background, #background, body{  
background:#FDBDB9 }
```

If only the background color should be changed can be used:

```
.background{ background-color:#FDBDB9 }
```

This example shows the color as background, it is applied via the CSS property "background".

To optimize and compress your CSS code, you can use our [online CSS compressor and optimizer](#) based on csstidy. If you want to create a linear or radial gradient as background or border, check our [CSS Gradient Generator](#).



Hey! You found this booklet interesting? Support Converting Colors with the new Membership Option!

The pro membership hides all ads, plus gives you double the colors in the color bucket, and more awesome pro features!

**[Learn more, Memberships starting at \\$2.50/m!](#)**

**Follow me  
on Twitter!**

@ConvertingColor