

# Converting Colors

Decimal(16672152)

Have a look what the booklet for  
Decimal(16672152) contains.

<b>Decimal(16672152)</b> .....	3
<i><b>Conversions</b></i> .....	4
<i><b>Details</b></i> .....	6
<i><b>Harmonies</b></i> .....	11
<i><b>Previews</b></i> .....	23
<i><b>Color Blindness Simulation</b></i> .....	26
<i><b>CSS Examples</b></i> .....	29

# **Color**

**Decimal(16672152)**

# Conversions

## Conversions Part 1

Format	Color
Hex	FE6598
RGB	254, 101, 152
RGB Percent	100%, 40%, 60%
CMY	0.0039, 0.6039, 0.4039
CMYK	0.00, 0.60, 0.40, 0.00
HSL	340°, 99%, 70%
HSV	340°, 60%, 100%
XYZ	51.1942, 32.6452, 33.3087
YIQ	152.5610, 74.8170, 48.2970

# Conversions

## Conversions Part 2

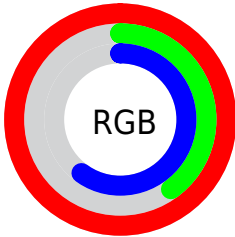
<b>Format</b>	<b>Color</b>
R <sub>Y</sub> B	254, 101, 152
Decimal	16672152
CIE <sub>Lab</sub>	63.87, 62.54, 2.95
CIE <sub>LCh</sub>	64, 62.607, 2.702
Y <sub>xy</sub>	32.6452, 0.4370, 0.2787
Android (android.graphics.Color)	4294862232 (0xFFFE6598)
Y <sub>UV</sub>	152.5610, -0.2766, 88.9620
Hunter-Lab	57.1360, 59.9493, 5.4308

# Details

The Decimal color **16672152** is a light color, and the websafe version is hex **FF6699**. A complement of this color would be **6684363**, and the grayscale version is **10066329**.

A 20% lighter version of the original color is **16752334**, and **12658789** is the 20% darker color. If you saturate the color by 10%, you get **16665735**, and if you desaturate by 10%, it is **16678569**.

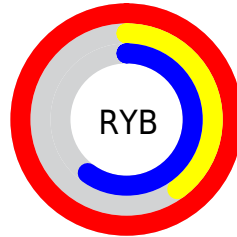
# Distribution



Red (100%)

Green (40%)

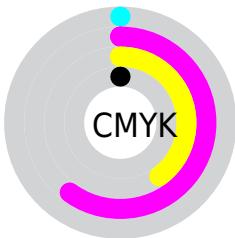
Blue (60%)



Red (100%)

Yellow (40%)

Blue (60%)

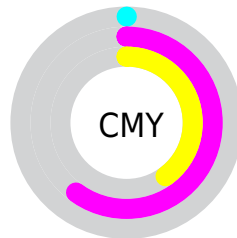


Cyan (0%)

Magenta (60%)

Yellow (40%)

Black (0%)



Cyan (0%)

Magenta (60%)

Yellow (40%)

# Brightness & Saturation Gradients

These gradients show how the Decimal color 16672152 changes by changing the brightness by 10 percent. The first figure shows a shift by +10% for each color and the second figure -10%.

Similar to the brightness gradients but the following saturation gradients show a change of the Decimal color 16672152 by changing the saturation by 10% instead.



 16672152

 16672152

16777215

 14633086

 16752334

 12658789

 16759786

 10682446


 16767231

 8716343

 16774911

 6815778

 4980747

 3080194

 0

 16672152

 16672152

 16665735

 16678569

 16659062

 16685242

 16652645

 16691659

 16646229

 16698332

 16704749

 16711166

16711679

# Harmonies

## Analogous

The Analogous color harmony consists of three colors that are next to each other on the color wheel.



14840527



16672152



16478050

# Triad

The Triadic color harmony groups three colors that are evenly spaced from another and form a triangle on the color wheel.



16672152



8038708



44797

# Complementary

The Complementary color scheme is a pair of colors which are on the opposite of each other on the color wheel.



16672152



6684363

# Split Complementary

Split-complementary colors differ from the complementary color scheme. The scheme consists of three colors, the original color and two neighbors of the complement color.



46294



16672152



635493

# Square

The Square scheme is like the rectangle color scheme, but the four colors are evenly spaced on the color wheel.



16672152



11770396



46494



41215

# Rectangle

The Rectangle color scheme consists of four colors that form a rectangle on the color wheel.



16672152



15433026



46494



45555



# Sweetspot

The Sweet Spot groups the original color and five complimentary colors.



16672152



16765408



13329918



8414061



0



8421504



# Same Dimension

The Same Dimension uses a secret algorithm to generate beautiful new colors.



16672152



16729989



16678501



8418167



12517440



4194325



# Inverse Universe

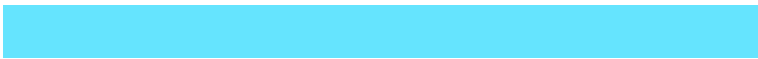
The Inverse Universe completely reimagines the original color for something new.



16672152



16729989



6677758



8418167



12517440



4194325



# Previews

## White Background



This preview shows how the Decimal color 16672152 looks on a white background.

## Color Contrast Check

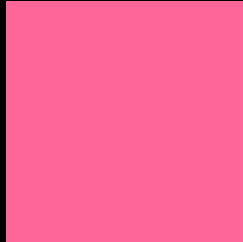
Large Text (above 18pt) WCAG AA × Fail

Any Text WCAG AA × Fail

Large Text (above 18pt) WCAG AAA × Fail

Any Text WCAG AAA × Fail

# Black Background



This preview shows how the Decimal color 16672152 looks on a black background.

## Color Contrast Check

Large Text (above 18pt) WCAG AA ✓ Pass

Any Text WCAG AA ✓ Pass

Large Text (above 18pt) WCAG AAA ✓ Pass

Any Text WCAG AAA ✓ Pass

If you want to check with other color combinations, try the [Color Contrast Checker](#).



## Decimal 16672152 Background



This preview shows how black text looks on a background with the Decimal color 16672152.



This preview shows how white text looks on a background with the Decimal color 16672152.

# Color Blindness Simulation

Color vision deficiency is a very complex topic, and I could not describe the different causes any better than Wikipedia does, so if you want to learn more, you should check out their [article about color blindness](#).

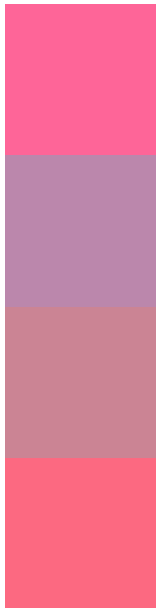
## Dichromacy





**Tritanopia**  
16477300

# Trichromacy



**Original Color**  
16672152

**Protanomaly**  
12289964

**Deuteranomaly**  
13337748

**Tritanomaly**  
16542081

# Monochromacy



**Original Color**  
16672152

**Achromatopsia**  
10066329

**Achromatomaly**  
12486297

# CSS Examples

## Text

The CSS property to change the color of the text to Decimal 16672152 is called "color". The color property can be set on classes, ids or directly on the HTML element.

This example shows how text in the color #FE6598 looks like.

```
.text, #text, p{  
    color:#FE6598  
}
```

If you want to add a text shadow in that color use the text-shadow property, you can generate a text shadow directly with our [CSS Text Shadow Generator](#).

Here you see how black text with a 4 pixel #FE6598 colored shadow looks like.

```
.shadow{ text-shadow: 4px 4px 2px #FE6598
}
```

## Border

The CSS property to change the border of an element to Decimal 16672152 is called "border". The border property can be set on classes, ids or directly on the HTML element.

This example shows the color as border, it can be applied via the CSS property "border" or "border-color".

```
.border, #border, table{ border:4px solid
#FE6598 }
```

If only the border color should be changed use the property `border-color`.

```
.border{ border-color:#FE6598 }
```

If you want to add a box shadow in that color use:

Here you see how a box with a 4 pixel #FE6598 colored shadow looks like.

```
.boxshadow{ -moz-box-shadow:4px 4px 4px  
4px #FE6598; -webkit-box-shadow:4px 4px  
4px 4px #FE6598; box-shadow:4px 4px 4px  
4px #FE6598 }
```

# Background

The CSS property to change the background color of an element to Decimal 16672152 is called "background". The background property can be set on classes, ids or directly on the HTML element.

```
.background, #background, body{  
background:#FE6598 }
```

If only the background color should be changed can be used:

```
.background{ background-color:#FE6598 }
```

This example shows the color as background, it is applied via the CSS property "background".

To optimize and compress your CSS code, you can use our [online CSS compressor and optimizer](#) based on csstidy. If you want to create a linear or radial gradient as background or border, check our [CSS Gradient Generator](#).



Hey! You found this booklet interesting? Support Converting Colors with the new Membership Option!

The pro membership hides all ads, plus gives you double the colors in the color bucket, and more awesome pro features!

**[Learn more, Memberships starting at \\$2.50/m!](#)**

**Follow me  
on Twitter!**

@ConvertingColor