

Converting Colors

Decimal(16678037)

Have a look what the booklet for
Decimal(16678037) contains.

Decimal(16678037)	3
<i>Conversions</i>	4
<i>Details</i>	6
<i>Harmonies</i>	11
<i>Previews</i>	23
<i>Color Blindness Simulation</i>	26
<i>CSS Examples</i>	29

Color

Decimal(16678037)

Conversions

Conversions Part 1

Format	Color
Hex	FE7C95
RGB	254, 124, 149
RGB Percent	100%, 49%, 58%
CMY	0.0039, 0.5137, 0.4157
CMYK	0.00, 0.51, 0.41, 0.00
HSL	348°, 98%, 74%
HSV	348°, 51%, 100%
XYZ	53.5055, 37.6561, 32.8821
YIQ	165.7200, 69.4550, 35.3350

Conversions

Conversions Part 2

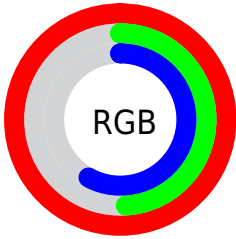
Format	Color
R _Y B	254, 124, 149
Decimal	16678037
CIE Lab	67.77, 51.79, 10.24
CIE LCh	68, 52.789, 11.187
Yxy	37.6561, 0.4313, 0.3036
Android (android.graphics.Color)	4294868117 (0xFFFE7C95)
YUV	165.7200, -8.2430, 77.4216
Hunter-Lab	61.3645, 48.2514, 11.1847

Details

The Decimal color **16678037** is a light color, and the websafe version is hex **FF6699**. A complement of this color would be **8191717**, and the grayscale version is **10921638**.

A 20% lighter version of the original color is **16757963**, and **12666466** is the 20% darker color. If you saturate the color by 10%, you get **16671616**, and if you desaturate by 10%, it is **16684458**.

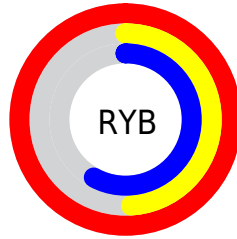
Distribution



Red (100%)

Green (49%)

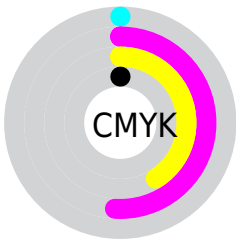
Blue (58%)



Red (100%)

Yellow (49%)

Blue (58%)

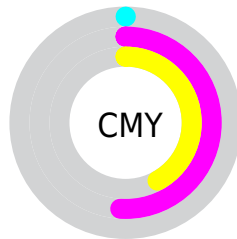


Cyan (0%)

Magenta (51%)

Yellow (41%)

Black (0%)



Cyan (0%)

Magenta (51%)

Yellow (42%)

Brightness & Saturation Gradients

These gradients show how the Decimal color 16678037 changes by changing the brightness by 10 percent. The first figure shows a shift by +10% for each color and the second figure -10%.

Similar to the brightness gradients but the following saturation gradients show a change of the Decimal color 16678037 by changing the saturation by 10% instead.

 16678037

 16678037

16777215

 14705019

 16757963

 12666466

 16765159

 10758475

 16772607

 8847412

 6946848

 5111815

 3407874

 0

 16678037

 16678037

■ 16671616

■ 16684458

■ 16664940

■ 16691134

■ 16658519

■ 16697555

■ 16651843

■ 16704231

■ 16646193

■ 16710652

16711679

Harmonies

Analogous

The Analogous color harmony consists of three colors that are next to each other on the color wheel.



15565253



16678037



16156265

Triad

The Triadic color harmony groups three colors that are evenly spaced from another and form a triangle on the color wheel.



16678037



8107098



45823

Complementary

The Complementary color scheme is a pair of colors which are on the opposite of each other on the color wheel.



16678037



8191717

Split Complementary

Split-complementary colors differ from the complementary color scheme. The scheme consists of three colors, the original color and two neighbors of the complement color.



48099



16678037



2800517

Square

The Square scheme is like the rectangle color scheme, but the four colors are evenly spaced on the color wheel.



16678037



11511875



48566



7578879

Rectangle

The Rectangle color scheme consists of four colors that form a rectangle on the color wheel.



16678037



14979666



48566



46840

Sweetspot

The Sweet Spot groups the original color and five complimentary colors.



16678037



16767456



14974206



8415597



0



8421504

Same Dimension

The Same Dimension uses a secret algorithm to generate beautiful new colors.



16678037



16737153



16687996



8418165



12517413



4194316

Inverse Universe

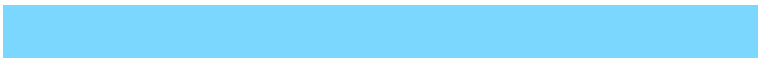
The Inverse Universe completely reimagines the original color for something new.



16678037



16737153



8181758



8418165



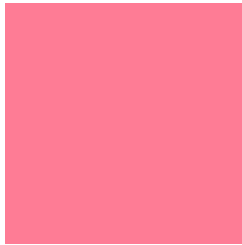
12517413



4194316

Previews

White Background



This preview shows how the Decimal color 16678037 looks on a white background.

Color Contrast Check

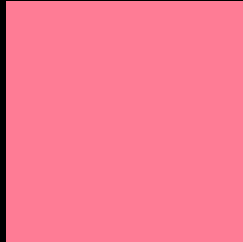
Large Text (above 18pt) WCAG AA × Fail

Any Text WCAG AA × Fail

Large Text (above 18pt) WCAG AAA × Fail

Any Text WCAG AAA × Fail

Black Background



This preview shows how the Decimal color 16678037 looks on a black background.

Color Contrast Check

Large Text (above 18pt) WCAG AA ✓ Pass

Any Text WCAG AA ✓ Pass

Large Text (above 18pt) WCAG AAA ✓ Pass

Any Text WCAG AAA ✓ Pass

If you want to check with other color combinations, try the [Color Contrast Checker](#).

Decimal 16678037 Background



This preview shows how black text looks on a background with the Decimal color 16678037.




This preview shows how white text looks on a background with the Decimal color 16678037.

Color Blindness Simulation

Color vision deficiency is a very complex topic, and I could not describe the different causes any better than Wikipedia does, so if you want to learn more, you should check out their [article about color blindness](#).

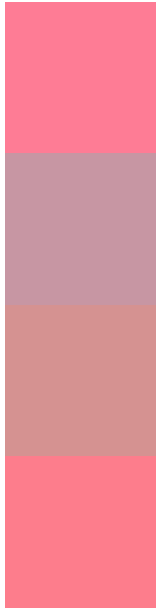
Dichromacy





Tritanopia
16612999

Trichromacy



Original Color
16678037

Protanomaly
13080227

Deuteranomaly
13996689

Tritanomaly
16612748

Monochromacy



Original Color
16678037

Achromatopsia
10921638

Achromatomaly
13014944

CSS Examples

Text

The CSS property to change the color of the text to Decimal 16678037 is called "color". The color property can be set on classes, ids or directly on the HTML element.

This example shows how text in the color #FE7C95 looks like.

```
.text, #text, p{  
    color:#FE7C95  
}
```

If you want to add a text shadow in that color use the text-shadow property, you can generate a text shadow directly with our [CSS Text Shadow Generator](#).

Here you see how black text with a 4 pixel #FE7C95 colored shadow looks like.

```
.shadow{ text-shadow: 4px 4px 2px #FE7C95
}
```

Border

The CSS property to change the border of an element to Decimal 16678037 is called "border". The border property can be set on classes, ids or directly on the HTML element.

This example shows the color as border, it can be applied via the CSS property "border" or "border-color".

```
.border, #border, table{ border:4px solid
#FE7C95 }
```

If only the border color should be changed use the property `border-color`.

```
.border{ border-color:#FE7C95 }
```

If you want to add a box shadow in that color use:

Here you see how a box with a 4 pixel #FE7C95 colored shadow looks like.

```
.boxshadow{ -moz-box-shadow:4px 4px 4px  
4px #FE7C95; -webkit-box-shadow:4px 4px  
4px 4px #FE7C95; box-shadow:4px 4px 4px  
4px #FE7C95 }
```

Background

The CSS property to change the background color of an element to Decimal 16678037 is called "background". The background property can be set on classes, ids or directly on the HTML element.

```
.background, #background, body{  
background:#FE7C95 }
```

If only the background color should be changed can be used:

```
.background{ background-color:#FE7C95 }
```

This example shows the color as background, it is applied via the CSS property "background".

To optimize and compress your CSS code, you can use our [online CSS compressor and optimizer](#) based on csstidy. If you want to create a linear or radial gradient as background or border, check our [CSS Gradient Generator](#).

Hey! You found this booklet interesting? Support Converting Colors with the new Membership Option!

The pro membership hides all ads, plus gives you double the colors in the color bucket, and more awesome pro features!

[Learn more, Memberships starting at \\$2.50/m!](#)

**Follow me
on Twitter!**

@ConvertingColor