

# Converting Colors

Decimal(16690088)

Have a look what the booklet for  
Decimal(16690088) contains.

<b>Decimal(16690088)</b> .....	3
<b><i>Conversions</i></b> .....	4
<b><i>Details</i></b> .....	6
<b><i>Harmonies</i></b> .....	11
<b><i>Previews</i></b> .....	23
<b><i>Color Blindness Simulation</i></b> .....	26
<b><i>CSS Examples</i></b> .....	29

# **Color**

**Decimal(16690088)**

# Conversions

## Conversions Part 1

Format	Color
Hex	FEABA8
RGB	254, 171, 168
RGB Percent	100%, 67%, 66%
CMY	0.0039, 0.3294, 0.3412
CMYK	0.00, 0.33, 0.34, 0.00
HSL	2°, 98%, 83%
HSV	2°, 34%, 100%
XYZ	62.5038, 53.0238, 43.9861
YIQ	195.4750, 50.4310, 16.6630

# Conversions

## Conversions Part 2

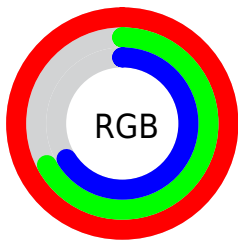
Format	Color
<a href="#">RYB</a>	<a href="#">254, 171, 168</a>
Decimal	<a href="#">16690088</a>
CIELab	<a href="#">77.89, 30.11, 14.03</a>
CIELCh	<a href="#">78, 33.217, 24.984</a>
Yxy	<a href="#">53.0238, 0.3918, 0.3324</a>
Android (android.graphics.Color)	<a href="#">4294880168</a> ( <a href="#">0xFFFEABA8</a> )
YUV	<a href="#">195.4750, -13.5452, 51.3264</a>
Hunter-Lab	<a href="#">72.8174, 25.7874, 15.1575</a>

# Details

The Decimal color **16690088** is a light color, and the websafe version is hex **FF9999**. A complement of this color would be **11074558**, and the grayscale version is **12895428**.

A 20% lighter version of the original color is **16770015**, and **12809844** is the 20% darker color. If you saturate the color by 10%, you get **16683663**, and if you desaturate by 10%, it is **16696513**.

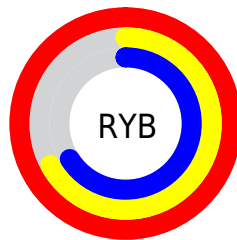
# Distribution



Red (100%)

Green (67%)

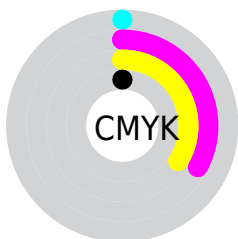
Blue (66%)



Red (100%)

Yellow (67%)

Blue (66%)

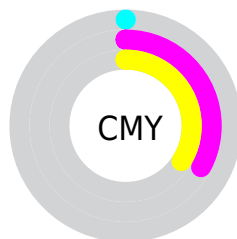


Cyan (0%)

Magenta (33%)

Yellow (34%)

Black (0%)



Cyan (0%)

Magenta (33%)

Yellow (34%)

# Brightness & Saturation Gradients

These gradients show how the Decimal color 16690088 changes by changing the brightness by 10 percent. The first figure shows a shift by +10% for each color and the second figure -10%.

Similar to the brightness gradients but the following saturation gradients show a change of the Decimal color 16690088 by changing the saturation by 10% instead.



 16690088

 16690088

16777215

 14717070

 16770015

 12809844

16777212

 10968411

 9126980

 7351342

 5575705

 3932160

 2293761

 0

 16690088

 16690088

 16683663

 16696513

 16677493

 16702683

 16671068

 16709108

 16664898

16711679

 16658473

 16652304

 16648448

# Harmonies

## Analogous

The Analogous color harmony consists of three colors that are next to each other on the color wheel.



16362183



16690088



15970959

# Triad

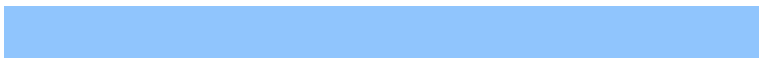
The Triadic color harmony groups three colors that are evenly spaced from another and form a triangle on the color wheel.



16690088



10014364



9487869

# Complementary

The Complementary color scheme is a pair of colors which are on the opposite of each other on the color wheel.



16690088



11074558

# Split Complementary

Split-complementary colors differ from the complementary color scheme. The scheme consists of three colors, the original color and two neighbors of the complement color.



6868466



1669088



7721402

# Square

The Square scheme is like the rectangle color scheme, but the four colors are evenly spaced on the color wheel.



16690088



12306312



6148569



12499704

# Rectangle

The Rectangle color scheme consists of four colors that form a rectangle on the color wheel.



16690088



14989701



6148569



8505595



# Sweetspot

The Sweet Spot groups the original color and five complimentary colors.



16690088



16770790



16689403



8417648



0



8421504



# Same Dimension

The Same Dimension uses a secret algorithm to generate beautiful new colors.



16690088



16751254



16701096



8418163



12519168



4194816



# Inverse Universe

The Inverse Universe completely reimagines the original color for something new.



11074558



9894911



11063550



7569280



47551



15936



# Previews

## White Background



This preview shows how the Decimal color 16690088 looks on a white background.

## Color Contrast Check

Large Text (above 18pt) WCAG AA × Fail

Any Text WCAG AA × Fail

Large Text (above 18pt) WCAG AAA × Fail

Any Text WCAG AAA × Fail

# Black Background



This preview shows how the Decimal color 16690088 looks on a black background.

## Color Contrast Check

Large Text (above 18pt) WCAG AA ✓ Pass

Any Text WCAG AA ✓ Pass

Large Text (above 18pt) WCAG AAA ✓ Pass

Any Text WCAG AAA ✓ Pass

If you want to check with other color combinations, try the [Color Contrast Checker](#).



## Decimal 16690088 Background



This preview shows how black text looks on a background with the Decimal color 16690088.

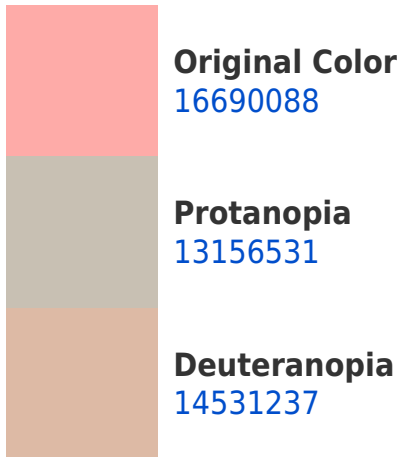


This preview shows how white text looks on a background with the Decimal color 16690088.

# Color Blindness Simulation

Color vision deficiency is a very complex topic, and I could not describe the different causes any better than Wikipedia does, so if you want to learn more, you should check out their [article about color blindness](#).

## Dichromacy



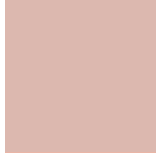


**Tritanopia**  
16755126

# Trichromacy



**Original Color**  
16690088



**Protanomaly**  
14465199



**Deuteranomaly**  
15316390



**Tritanomaly**  
16755377

# Monochromacy



**Original Color**  
16690088



**Achromatopsia**  
12829635



**Achromatomaly**  
14203577

# CSS Examples

## Text

The CSS property to change the color of the text to Decimal 16690088 is called "color". The color property can be set on classes, ids or directly on the HTML element.

This example shows how text in the color #FEABA8 looks like.

```
.text, #text, p{  
  color:#FEABA8  
}
```

If you want to add a text shadow in that color use the text-shadow property, you can generate a text shadow directly with our [CSS Text Shadow Generator](#).

Here you see how black text with a 4 pixel #FEABA8 colored shadow looks like.

```
.shadow{ text-shadow: 4px 4px 2px #FEABA8  
}
```

## Border

The CSS property to change the border of an element to Decimal 16690088 is called "border". The border property can be set on classes, ids or directly on the HTML element.

This example shows the color as border, it can be applied via the CSS property "border" or "border-color".

```
.border, #border, table{ border:4px solid  
#FEABA8 }
```

If only the border color should be changed use the property `border-color`.

```
.border{ border-color:#FEABA8 }
```

If you want to add a box shadow in that color use:

Here you see how a box with a 4 pixel #FEABA8 colored shadow looks like.

```
.boxshadow{ -moz-box-shadow:4px 4px 4px  
4px #FEABA8; -webkit-box-shadow:4px 4px  
4px 4px #FEABA8; box-shadow:4px 4px 4px  
4px #FEABA8 }
```

# Background

The CSS property to change the background color of an element to Decimal 16690088 is called "background". The background property can be set on classes, ids or directly on the HTML element.

```
.background, #background, body{  
background:#FEABA8 }
```

If only the background color should be changed can be used:

```
.background{ background-color:#FEABA8 }
```

This example shows the color as background, it is applied via the CSS property "background".

To optimize and compress your CSS code, you can use our [online CSS compressor and optimizer](#) based on csstidy. If you want to create a linear or radial gradient as background or border, check our [CSS Gradient Generator](#).



Hey! You found this booklet interesting? Support Converting Colors with the new Membership Option!

The pro membership hides all ads, plus gives you double the colors in the color bucket, and more awesome pro features!

**[Learn more, Memberships starting at \\$2.50/m!](#)**

**Follow me  
on Twitter!**

@ConvertingColor