

# Converting Colors

Decimal(16726138)

Have a look what the booklet for  
Decimal(16726138) contains.

<b>Decimal(16726138)</b> .....	3
<i><b>Conversions</b></i> .....	4
<i><b>Details</b></i> .....	6
<i><b>Harmonies</b></i> .....	11
<i><b>Previews</b></i> .....	23
<i><b>Color Blindness Simulation</b></i> .....	26
<i><b>CSS Examples</b></i> .....	29

**Color**

**Decimal(16726138)**

# Conversions

## Conversions Part 1

Format	Color
Hex	FF387A
RGB	255, 56, 122
RGB Percent	100%, 22%, 48%
CMY	0.0000, 0.7804, 0.5216
CMYK	0.00, 0.78, 0.52, 0.00
HSL	340°, 100%, 61%
HSV	340°, 78%, 100%
XYZ	46.1670, 25.4935, 20.8998
YIQ	123.0250, 97.4180, 62.7140

# Conversions

## Conversions Part 2

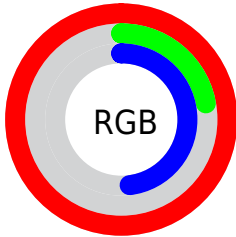
Format	Color
<a href="#">RYB</a>	<a href="#">255, 56, 122</a>
Decimal	<a href="#">16726138</a>
CIELab	<a href="#">57.55, 76.00, 11.45</a>
CIElCh	<a href="#">58, 76.856, 8.565</a>
Yxy	<a href="#">25.4935, 0.4988, 0.2754</a>
Android (android.graphics.Color)	<a href="#">4294916218 (0xFFFF387A)</a>
YUV	<a href="#">123.0250, -0.5053, 115.7421</a>
Hunter-Lab	<a href="#">50.4911, 74.8539, 10.8018</a>

# Details

The Decimal color **16726138** is a dark color, and the websafe version is hex **FF066**. The color can be described as middle washed rose. A complement of this color would be **3735485**, and the grayscale version is **8092539**.

A 20% lighter version of the original color is **16742830**, and **12582986** is the 20% darker color. If you saturate the color by 10%, you get **16719465**, and if you desaturate by 10%, it is **16732811**.

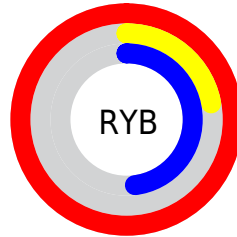
# Distribution



Red (100%)

Green (22%)

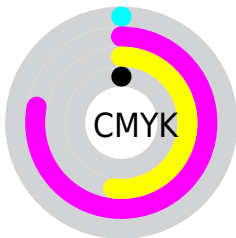
Blue (48%)



Red (100%)

Yellow (22%)

Blue (48%)

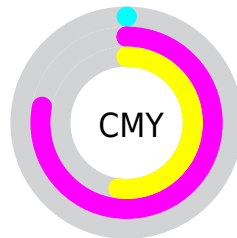


Cyan (0%)

Magenta (78%)

Yellow (52%)

Black (0%)



Cyan (0%)

Magenta (78%)

Yellow (52%)

# Brightness & Saturation Gradients

These gradients show how the Decimal color 16726138 changes by changing the brightness by 10 percent. The first figure shows a shift by +10% for each color and the second figure -10%.

Similar to the brightness gradients but the following saturation gradients show a change of the Decimal color 16726138 by changing the saturation by 10% instead.



 16726138

 16726138

16777215

 14614625

 16742830

 12582986

 16750537

 10485812

 16758245

 8454175

 16765951

 6488070

 16773631

 4521987

 2359297

 0

 16726138

 16726138

■ 16719465

■ 16732811

■ 16713048

■ 16739228

■ 16711765

■ 16745645

■ 16752318

■ 16758735

■ 16765408

■ 16772081

16777215

# Harmonies

## Analogous

The Analogous color harmony consists of three colors that are next to each other on the color wheel.



15157693



16726138



15946553

# Triad

The Triadic color harmony groups three colors that are evenly spaced from another and form a triangle on the color wheel.



16726138



4889856



40959

# Complementary

The Complementary color scheme is a pair of colors which are on the opposite of each other on the color wheel.



16726138



3735485

# Split Complementary

Split-complementary colors differ from the complementary color scheme. The scheme consists of three colors, the original color and two neighbors of the complement color.



42717



16726138



42326

# Square

The Square scheme is like the rectangle color scheme, but the four colors are evenly spaced on the color wheel.



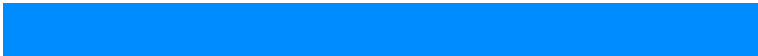
16726138



9801216



43164



36095

# Rectangle

The Rectangle color scheme consists of four colors that form a rectangle on the color wheel.



16726138



14445057



43164



41725



# Sweetspot

The Sweet Spot groups the original color and five complimentary colors.



16726138



16762072



12400895



8412264



0



8421504



# Same Dimension

The Same Dimension uses a secret algorithm to generate beautiful new colors.



16726138



16715615



16734520



8418167



12517439



4194325



# Inverse Universe

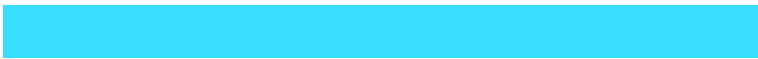
The Inverse Universe completely reimagines the original color for something new.



16726138



16715615



3727103



8418167



12517439



4194325



# Previews

## White Background



This preview shows how the Decimal color 16726138 looks on a white background.

## Color Contrast Check

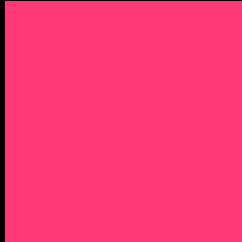
Large Text (above 18pt) WCAG AA ✓ Pass

Any Text WCAG AA × Fail

Large Text (above 18pt) WCAG AAA × Fail

Any Text WCAG AAA × Fail

# Black Background



This preview shows how the Decimal color 16726138 looks on a black background.

## Color Contrast Check

Large Text (above 18pt) WCAG AA ✓ Pass

Any Text WCAG AA ✓ Pass

Large Text (above 18pt) WCAG AAA ✓ Pass

Any Text WCAG AAA × Fail

If you want to check with other color combinations, try the [Color Contrast Checker](#).



## Decimal 16726138 Background



This preview shows how black text looks on a background with the Decimal color 16726138.



This preview shows how white text looks on a background with the Decimal color 16726138.

# Color Blindness Simulation

Color vision deficiency is a very complex topic, and I could not describe the different causes any better than Wikipedia does, so if you want to learn more, you should check out their [article about color blindness](#).

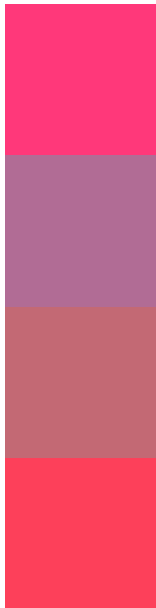
## Dichromacy





**Tritanopia**  
16532808

# Trichromacy



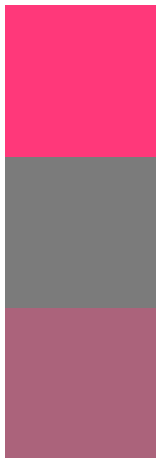
**Original Color**  
16726138

**Protanomaly**  
11627669

**Deuteranomaly**  
12806516

**Tritanomaly**  
16597082

# Monochromacy



**Original Color**  
16726138

**Achromatopsia**  
8092539

**Achromatomaly**  
11232123

# CSS Examples

## Text

The CSS property to change the color of the text to Decimal 16726138 is called "color". The color property can be set on classes, ids or directly on the HTML element.

This example shows how text in the color #FF387A looks like.

```
.text, #text, p{  
  color:#FF387A  
}
```

If you want to add a text shadow in that color use the text-shadow property, you can generate a text shadow directly with our [CSS Text Shadow Generator](#).

Here you see how black text with a 4 pixel #FF387A colored shadow looks like.

```
.shadow{ text-shadow: 4px 4px 2px #FF387A
}
```

## Border

The CSS property to change the border of an element to Decimal 16726138 is called "border". The border property can be set on classes, ids or directly on the HTML element.

This example shows the color as border, it can be applied via the CSS property "border" or "border-color".

```
.border, #border, table{ border:4px solid
#FF387A }
```

If only the border color should be changed use the property `border-color`.

```
.border{ border-color:#FF387A }
```

If you want to add a box shadow in that color use:

Here you see how a box with a 4 pixel #FF387A colored shadow looks like.

```
.boxshadow{ -moz-box-shadow:4px 4px 4px  
4px #FF387A; -webkit-box-shadow:4px 4px  
4px 4px #FF387A; box-shadow:4px 4px 4px  
4px #FF387A }
```

# Background

The CSS property to change the background color of an element to Decimal 16726138 is called "background". The background property can be set on classes, ids or directly on the HTML element.

```
.background, #background, body{  
background:#FF387A }
```

If only the background color should be changed can be used:

```
.background{ background-color:#FF387A }
```

This example shows the color as background, it is applied via the CSS property "background".

To optimize and compress your CSS code, you can use our [online CSS compressor and optimizer](#) based on csstidy. If you want to create a linear or radial gradient as background or border, check our [CSS Gradient Generator](#).



Hey! You found this booklet interesting? Support Converting Colors with the new Membership Option!

The pro membership hides all ads, plus gives you double the colors in the color bucket, and more awesome pro features!

**[Learn more, Memberships starting at \\$2.50/m!](#)**

**Follow me  
on Twitter!**

**@ConvertingColor**