

Converting Colors

Decimal(16727419)

Have a look what the booklet for
Decimal(16727419) contains.

Decimal(16727419)	3
<i>Conversions</i>	4
<i>Details</i>	6
<i>Harmonies</i>	11
<i>Previews</i>	23
<i>Color Blindness Simulation</i>	26
<i>CSS Examples</i>	29

Color

Decimal(16727419)

Conversions

Conversions Part 1

Format	Color
Hex	FF3D7B
RGB	255, 61, 123
RGB Percent	100%, 24%, 48%
CMY	0.0000, 0.7608, 0.5176
CMYK	0.00, 0.76, 0.52, 0.00
HSL	341°, 100%, 62%
HSV	341°, 76%, 100%
XYZ	46.4839, 26.0275, 21.3127
YIQ	126.0740, 95.7220, 60.4100

Conversions

Conversions Part 2

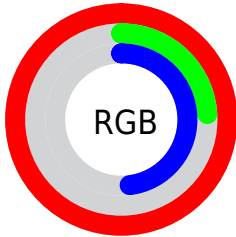
Format	Color
R_{YB}	255, 61, 123
Decimal	16727419
CIE _{Lab}	58.06, 74.70, 11.57
CIE _{LCh}	58, 75.588, 8.805
Yxy	26.0275, 0.4954, 0.2774
Android (android.graphics.Color)	4294917499 (0xFFFF3D7B)
YUV	126.0740, -1.5155, 113.0681
Hunter-Lab	51.0172, 73.3587, 10.9433

Details

The Decimal color **16727419** is a dark color, and the websafe version is hex **FF3366**. The color can be described as middle washed rose. A complement of this color would be **4063169**, and the grayscale version is **8289918**.

A 20% lighter version of the original color is **16743855**, and **12582987** is the 20% darker color. If you saturate the color by 10%, you get **16720746**, and if you desaturate by 10%, it is **16734092**.

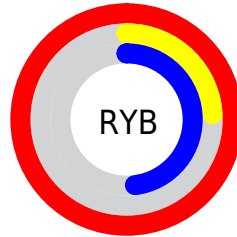
Distribution



Red (100%)

Green (24%)

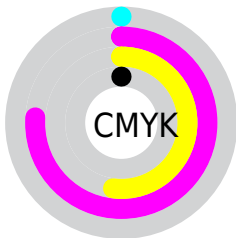
Blue (48%)



Red (100%)

Yellow (24%)

Blue (48%)

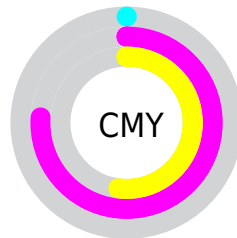


Cyan (0%)

Magenta (76%)

Yellow (52%)

Black (0%)



Cyan (0%)

Magenta (76%)

Yellow (52%)

Brightness & Saturation Gradients

These gradients show how the Decimal color 16727419 changes by changing the brightness by 10 percent. The first figure shows a shift by +10% for each color and the second figure -10%.

Similar to the brightness gradients but the following saturation gradients show a change of the Decimal color 16727419 by changing the saturation by 10% instead.

 16727419

 16727419

16777215

 14617442

 16743855

 12582987

 16751562

 10551349

 16759014

 8519712

 16766719

 6488072

 16774399

 4587523

 2424833

 0

 16727419

 16727419

■ 16720746

■ 16734092

■ 16714328

■ 16740510

■ 16711761

■ 16747183

■ 16753600

■ 16760274

■ 16766691

■ 16773364

16777215

Harmonies

Analogous

The Analogous color harmony consists of three colors that are next to each other on the color wheel.



15223997



16727419



15947323

Triad

The Triadic color harmony groups three colors that are evenly spaced from another and form a triangle on the color wheel.



16727419



5021191



40959

Complementary

The Complementary color scheme is a pair of colors which are on the opposite of each other on the color wheel.



16727419



4063169

Split Complementary

Split-complementary colors differ from the complementary color scheme. The scheme consists of three colors, the original color and two neighbors of the complement color.



42973



16727419



42585

Square

The Square scheme is like the rectangle color scheme, but the four colors are evenly spaced on the color wheel.



16727419



9932544



43422



36351

Rectangle

The Rectangle color scheme consists of four colors that form a rectangle on the color wheel.



16727419



14445576



43422



41981

Sweetspot

The Sweet Spot groups the original color and five complimentary colors.



16727419



16762071



12467711



8412263



0



8421504

Same Dimension

The Same Dimension uses a secret algorithm to generate beautiful new colors.



16727419



16717665



16735549



8418167



12517437



4194324

Inverse Universe

The Inverse Universe completely reimagines the original color for something new.



16727419



16717665



4055039



8418167



12517437



4194324

Previews

White Background



This preview shows how the Decimal color 16727419 looks on a white background.

Color Contrast Check

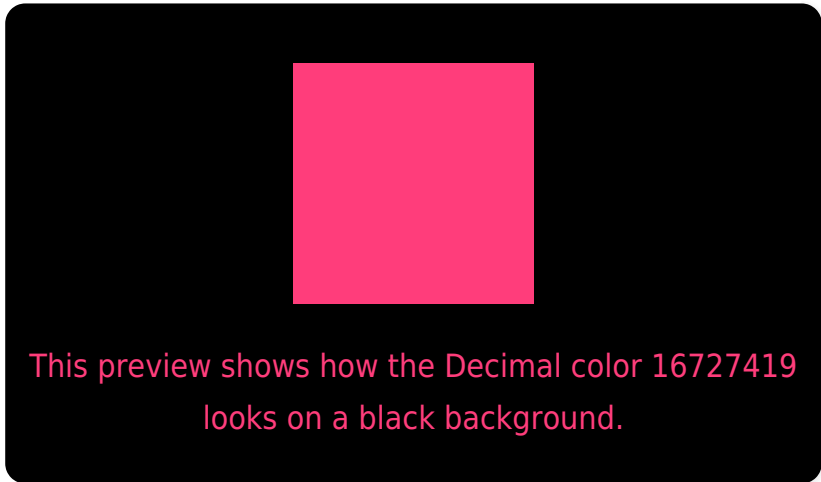
Large Text (above 18pt) WCAG AA ✓ Pass

Any Text WCAG AA × Fail

Large Text (above 18pt) WCAG AAA × Fail

Any Text WCAG AAA × Fail

Black Background



Color Contrast Check

Large Text (above 18pt) WCAG AA ✓ Pass

Any Text WCAG AA ✓ Pass

Large Text (above 18pt) WCAG AAA ✓ Pass

Any Text WCAG AAA × Fail

If you want to check with other color combinations, try the [Color Contrast Checker](#).

Decimal 16727419 Background



This preview shows how black text looks on a background with the Decimal color 16727419.

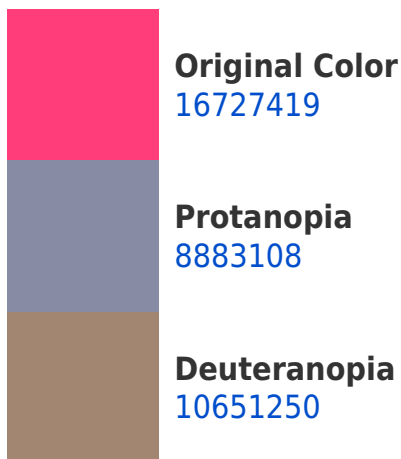



This preview shows how white text looks on a background with the Decimal color 16727419.

Color Blindness Simulation

Color vision deficiency is a very complex topic, and I could not describe the different causes any better than Wikipedia does, so if you want to learn more, you should check out their [article about color blindness](#).

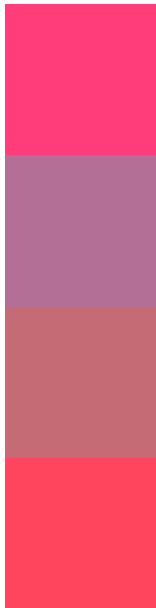
Dichromacy





Tritanopia
16599372

Trichromacy



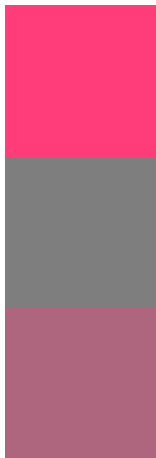
Original Color
16727419

Protanomaly
11759509

Deuteranomaly
12872565

Tritanomaly
16663901

Monochromacy



Original Color
16727419

Achromatopsia
8289918

Achromatomaly
11363965

CSS Examples

Text

The CSS property to change the color of the text to Decimal 16727419 is called "color". The color property can be set on classes, ids or directly on the HTML element.

This example shows how text in the color #FF3D7B looks like.

```
.text, #text, p{  
  color:#FF3D7B  
}
```

If you want to add a text shadow in that color use the text-shadow property, you can generate a text shadow directly with our [CSS Text Shadow Generator](#).

Here you see how black text with a 4 pixel #FF3D7B colored shadow looks like.

```
.shadow{ text-shadow: 4px 4px 2px #FF3D7B
}
```

Border

The CSS property to change the border of an element to Decimal 16727419 is called "border". The border property can be set on classes, ids or directly on the HTML element.

This example shows the color as border, it can be applied via the CSS property "border" or "border-color".

```
.border, #border, table{ border:4px solid
#FF3D7B }
```

If only the border color should be changed use the property `border-color`.

```
.border{ border-color:#FF3D7B }
```

If you want to add a box shadow in that color use:

Here you see how a box with a 4 pixel #FF3D7B colored shadow looks like.

```
.boxshadow{ -moz-box-shadow:4px 4px 4px  
4px #FF3D7B; -webkit-box-shadow:4px 4px  
4px 4px #FF3D7B; box-shadow:4px 4px 4px  
4px #FF3D7B }
```

Background

The CSS property to change the background color of an element to Decimal 16727419 is called "background". The background property can be set on classes, ids or directly on the HTML element.

```
.background, #background, body{  
background:#FF3D7B }
```

If only the background color should be changed can be used:

```
.background{ background-color:#FF3D7B }
```

This example shows the color as background, it is applied via the CSS property "background".

To optimize and compress your CSS code, you can use our [online CSS compressor and optimizer](#) based on csstidy. If you want to create a linear or radial gradient as background or border, check our [CSS Gradient Generator](#).

Hey! You found this booklet interesting? Support Converting Colors with the new Membership Option!

The pro membership hides all ads, plus gives you double the colors in the color bucket, and more awesome pro features!

[Learn more, Memberships starting at \\$2.50/m!](#)

**Follow me
on Twitter!**

@ConvertingColor