

Converting Colors

Decimal(16728712)

Have a look what the booklet for
Decimal(16728712) contains.

Decimal(16728712)	3
<i>Conversions</i>	4
<i>Details</i>	6
<i>Harmonies</i>	11
<i>Previews</i>	23
<i>Color Blindness Simulation</i>	26
<i>CSS Examples</i>	29

Color

Decimal(16728712)

Conversions

Conversions Part 1

Format	Color
Hex	FF4288
RGB	255, 66, 136
RGB Percent	100%, 26%, 53%
CMY	0.0000, 0.7412, 0.4667
CMYK	0.00, 0.74, 0.47, 0.00
HSL	338°, 100%, 63%
HSV	338°, 74%, 100%
XYZ	47.6321, 26.9340, 25.9808
YIQ	130.4910, 90.1740, 61.8380

Conversions

Conversions Part 2

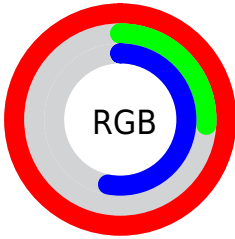
Format	Color
RYB	255, 66, 136
Decimal	16728712
CIELab	58.91, 74.25, 5.11
CIELCh	59, 74.427, 3.938
Yxy	26.9340, 0.4737, 0.2679
Android (android.graphics.Color)	4294918792 (0xFFFF4288)
YUV	130.4910, 2.7159, 109.1944
Hunter-Lab	51.8980, 73.0065, 6.6472

Details

The Decimal color **16728712** is a light color, and the websafe version is hex **FF3399**. The color can be described as light washed rose. A complement of this color would be **4390841**, and the grayscale version is **8553090**.

A 20% lighter version of the original color is **16744893**, and **12582999** is the 20% darker color. If you saturate the color by 10%, you get **16722040**, and if you desaturate by 10%, it is **16735128**.

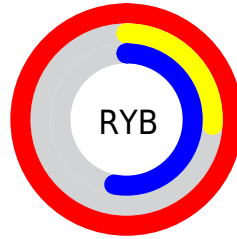
Distribution



Red (100%)

Green (26%)

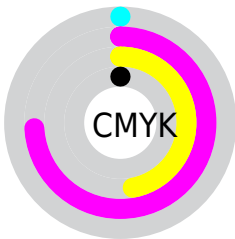
Blue (53%)



Red (100%)

Yellow (26%)

Blue (53%)

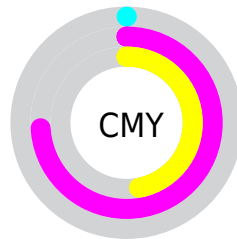


Cyan (0%)

Magenta (74%)

Yellow (47%)

Black (0%)



Cyan (0%)

Magenta (74%)

Yellow (47%)

Brightness & Saturation Gradients

These gradients show how the Decimal color 16728712 changes by changing the brightness by 10 percent. The first figure shows a shift by +10% for each color and the second figure -10%.

Similar to the brightness gradients but the following saturation gradients show a change of the Decimal color 16728712 by changing the saturation by 10% instead.

 16728712

 16728712

16777215

 14620527

 16744893

 12582999

 16752345

 10551360

 16760053

 8585258

 16767743

 6619158

 16775423

 4718596

 2621441

 0

 16728712

 16728712

■ 16722040

■ 16735128

■ 16715624

■ 16741800

■ 16711774

■ 16748472

■ 16754888

■ 16761560

■ 16767976

■ 16774392

16777215

Harmonies

Analogous

The Analogous color harmony consists of three colors that are next to each other on the color wheel.



14833352



16728712



16274761

Triad

The Triadic color harmony groups three colors that are evenly spaced from another and form a triangle on the color wheel.



16728712



6266368



41983

Complementary

The Complementary color scheme is a pair of colors which are on the opposite of each other on the color wheel.



16728712



4390841

Split Complementary

Split-complementary colors differ from the complementary color scheme. The scheme consists of three colors, the original color and two neighbors of the complement color.



43733



16728712



42833

Square

The Square scheme is like the rectangle color scheme, but the four colors are evenly spaced on the color wheel.



16728712



10718720



43925



37887

Rectangle

The Rectangle color scheme consists of four colors that form a rectangle on the color wheel.



16728712



14969374



43925



42743

Sweetspot

The Sweet Spot groups the original color and five complimentary colors.



16728712



16762844



12010239



8412779



0



8421504

Same Dimension

The Same Dimension uses a secret algorithm to generate beautiful new colors.



16728712



16718960



16734274



8418167



12517447



4194328

Inverse Universe

The Inverse Universe completely reimagines the original color for something new.



16728712



16718960



4385279



8418167



12517447



4194328

Previews

White Background



This preview shows how the Decimal color 16728712 looks on a white background.

Color Contrast Check

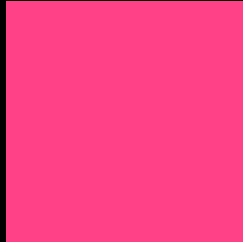
Large Text (above 18pt) WCAG AA ✓ Pass

Any Text WCAG AA × Fail

Large Text (above 18pt) WCAG AAA × Fail

Any Text WCAG AAA × Fail

Black Background



This preview shows how the Decimal color 16728712 looks on a black background.

Color Contrast Check

Large Text (above 18pt) WCAG AA ✓ Pass

Any Text WCAG AA ✓ Pass

Large Text (above 18pt) WCAG AAA ✓ Pass

Any Text WCAG AAA × Fail

If you want to check with other color combinations, try the [Color Contrast Checker](#).

Decimal 16728712 Background



This preview shows how black text looks on a background with the Decimal color 16728712.



This preview shows how white text looks on a background with the Decimal color 16728712.

Color Blindness Simulation

Color vision deficiency is a very complex topic, and I could not describe the different causes any better than Wikipedia does, so if you want to learn more, you should check out their [article about color blindness](#).


Dichromacy



Original Color
16728712

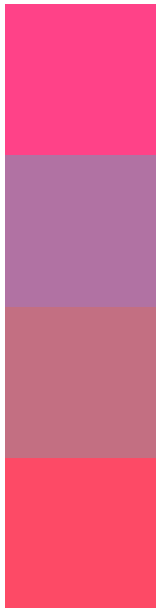
Protanopia
8752563

Deuteranopia
10586495



Tritanopia
16535379

Trichromacy



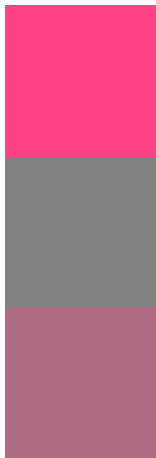
Original Color
16728712

Protanomaly
11629219

Deuteranomaly
12808066

Tritanomaly
16599654

Monochromacy



Original Color
16728712

Achromatopsia
8553090

Achromatomaly
11496324

CSS Examples

Text

The CSS property to change the color of the text to Decimal 16728712 is called "color". The color property can be set on classes, ids or directly on the HTML element.

This example shows how text in the color #FF4288 looks like.

```
.text, #text, p{  
    color:#FF4288  
}
```

If you want to add a text shadow in that color use the text-shadow property, you can generate a text shadow directly with our [CSS Text Shadow Generator](#).

Here you see how black text with a 4 pixel #FF4288 colored shadow looks like.

```
.shadow{ text-shadow: 4px 4px 2px #FF4288
}
```

Border

The CSS property to change the border of an element to Decimal 16728712 is called "border". The border property can be set on classes, ids or directly on the HTML element.

This example shows the color as border, it can be applied via the CSS property "border" or "border-color".

```
.border, #border, table{ border:4px solid
#FF4288 }
```

If only the border color should be changed use the property `border-color`.

```
.border{ border-color:#FF4288 }
```

If you want to add a box shadow in that color use:

Here you see how a box with a 4 pixel #FF4288 colored shadow looks like.

```
.boxshadow{ -moz-box-shadow:4px 4px 4px  
4px #FF4288; -webkit-box-shadow:4px 4px  
4px 4px #FF4288; box-shadow:4px 4px 4px  
4px #FF4288 }
```

Background

The CSS property to change the background color of an element to Decimal 16728712 is called "background". The background property can be set on classes, ids or directly on the HTML element.

```
.background, #background, body{  
background:#FF4288 }
```

If only the background color should be changed can be used:

```
.background{ background-color:#FF4288 }
```

This example shows the color as background, it is applied via the CSS property "background".

To optimize and compress your CSS code, you can use our [online CSS compressor and optimizer](#) based on csstidy. If you want to create a linear or radial gradient as background or border, check our [CSS Gradient Generator](#).

Hey! You found this booklet interesting? Support Converting Colors with the new Membership Option!

The pro membership hides all ads, plus gives you double the colors in the color bucket, and more awesome pro features!

[Learn more, Memberships starting at \\$2.50/m!](#)

**Follow me
on Twitter!**

@ConvertingColor