

Converting Colors

Decimal(16728942)

Have a look what the booklet for
Decimal(16728942) contains.

Decimal(16728942)	3
<i>Conversions</i>	4
<i>Details</i>	6
<i>Harmonies</i>	11
<i>Previews</i>	23
<i>Color Blindness Simulation</i>	26
<i>CSS Examples</i>	29

Color

Decimal(16728942)

Conversions

Conversions Part 1

Format	Color
Hex	FF436E
RGB	255, 67, 110
RGB Percent	100%, 26%, 43%
CMY	0.0000, 0.7373, 0.5686
CMYK	0.00, 0.74, 0.57, 0.00
HSL	346°, 100%, 63%
HSV	346°, 74%, 100%
XYZ	46.0616, 26.4001, 17.4199
YIQ	128.1140, 98.2450, 53.2290

Conversions

Conversions Part 2

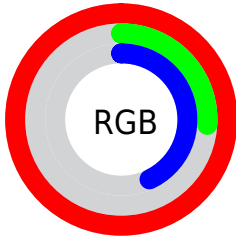
Format	Color
R_{YB}	255, 67, 110
Decimal	16728942
CIE _{Lab}	58.41, 71.98, 19.73
CIE _{LCh}	58, 74.639, 15.326
Yxy	26.4001, 0.5125, 0.2937
Android (android.graphics.Color)	4294919022 (0xFFFF436E)
YUV	128.1140, -8.9302, 111.2790
Hunter-Lab	51.3810, 70.1034, 15.8655

Details

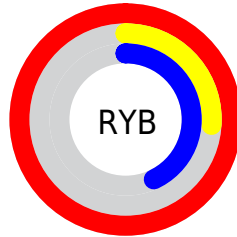
The Decimal color **16728942** is a dark color, and the websafe version is hex **FF3366**. The color can be described as middle washed rose. A complement of this color would be **4456404**, and the grayscale version is **8421504**.

A 20% lighter version of the original color is **16744865**, and **12517439** is the 20% darker color. If you saturate the color by 10%, you get **16722266**, and if you desaturate by 10%, it is **16735362**.

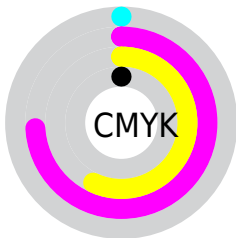
Distribution



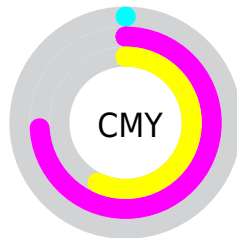
- Red (100%)
- Green (26%)
- Blue (43%)



- Red (100%)
- Yellow (26%)
- Blue (43%)



- Cyan (0%)
- Magenta (74%)
- Yellow (57%)
- Black (0%)



- Cyan (0%)
- Magenta (74%)
- Yellow (57%)

Brightness & Saturation Gradients

These gradients show how the Decimal color 16728942 changes by changing the brightness by 10 percent. The first figure shows a shift by +10% for each color and the second figure -10%.

Similar to the brightness gradients but the following saturation gradients show a change of the Decimal color 16728942 by changing the saturation by 10% instead.

 16728942

 16728942

16777215

 14621270

 16744865

 12517439

 16752316

 10485802

 16760024

 8454166

 16767732

 6422530

 16775423

 4521987

 2359297

 0

 16728942

 16728942

■ 16722266

■ 16735362

■ 16715847

■ 16742037

■ 16711738

■ 16748713

■ 16755133

■ 16761808

■ 16768228

■ 16774648

16777215

Harmonies

Analogous

The Analogous color harmony consists of three colors that are next to each other on the color wheel.



15747503



16728942



15556400

Triad

The Triadic color harmony groups three colors that are evenly spaced from another and form a triangle on the color wheel.



16728942



3580195



40447

Complementary

The Complementary color scheme is a pair of colors which are on the opposite of each other on the color wheel.



16728942



4456404

Split Complementary

Split-complementary colors differ from the complementary color scheme. The scheme consists of three colors, the original color and two neighbors of the complement color.



42985



16728942



43113

Square

The Square scheme is like the rectangle color scheme, but the four colors are evenly spaced on the color wheel.



16728942



9081856



43693



2656767

Rectangle

The Rectangle color scheme consists of four colors that form a rectangle on the color wheel.



16728942



13857792



43693



41727

Sweetspot

The Sweet Spot groups the original color and five complimentary colors.



16728942



16762836



13845503



8412774



0



8421504

Same Dimension

The Same Dimension uses a secret algorithm to generate beautiful new colors.



16728942



16719698



16741699



8418166



12517420



4194319

Inverse Universe

The Inverse Universe completely reimagines the original color for something new.



16728942



16719698



4443647



8418166



12517420



4194319

Previews

White Background



This preview shows how the Decimal color 16728942 looks on a white background.

Color Contrast Check

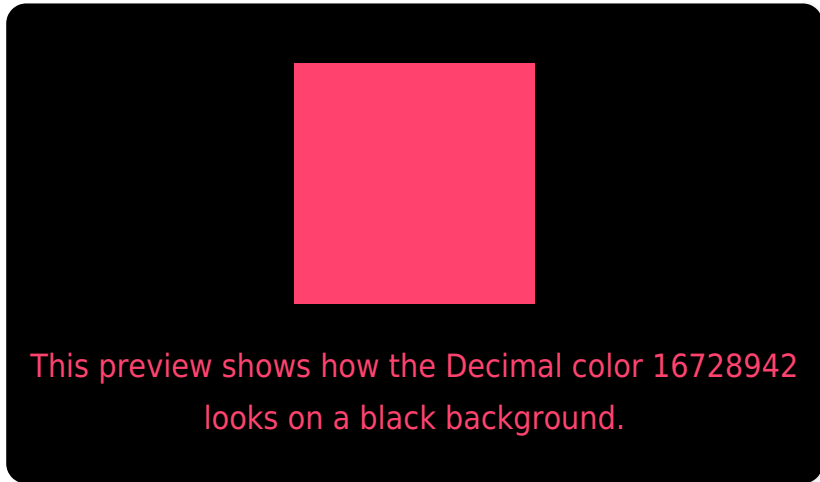
Large Text (above 18pt) WCAG AA ✓ Pass

Any Text WCAG AA × Fail

Large Text (above 18pt) WCAG AAA × Fail

Any Text WCAG AAA × Fail

Black Background



Color Contrast Check

Large Text (above 18pt) WCAG AA ✓ Pass

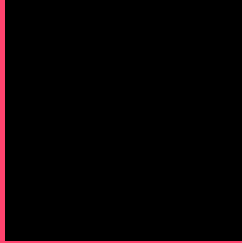
Any Text WCAG AA ✓ Pass

Large Text (above 18pt) WCAG AAA ✓ Pass

Any Text WCAG AAA × Fail

If you want to check with other color combinations, try the [Color Contrast Checker](#).

Decimal 16728942 Background



This preview shows how black text looks on a background with the Decimal color 16728942.

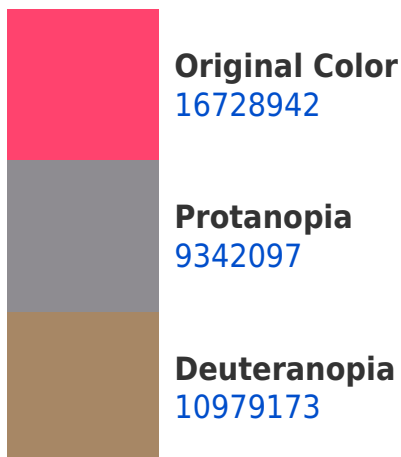



This preview shows how white text looks on a background with the Decimal color 16728942.

Color Blindness Simulation

Color vision deficiency is a very complex topic, and I could not describe the different causes any better than Wikipedia does, so if you want to learn more, you should check out their [article about color blindness](#).

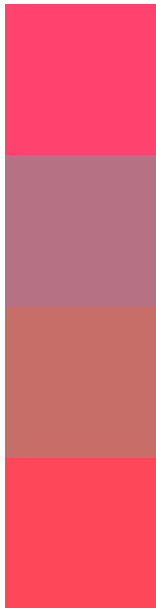
Dichromacy





Tritanopia
16599629

Trichromacy



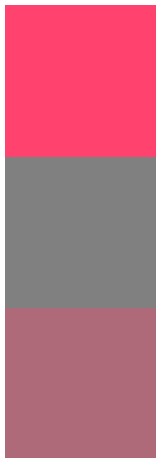
Original Color
16728942

Protanomaly
12022148

Deuteranomaly
13069928

Tritanomaly
16664409

Monochromacy



Original Color
16728942

Achromatopsia
8421504

Achromatomaly
11430521

CSS Examples

Text

The CSS property to change the color of the text to Decimal 16728942 is called "color". The color property can be set on classes, ids or directly on the HTML element.

This example shows how text in the color #FF436E looks like.

```
.text, #text, p{  
    color:#FF436E  
}
```

If you want to add a text shadow in that color use the text-shadow property, you can generate a text shadow directly with our [CSS Text Shadow Generator](#).

Here you see how black text with a 4 pixel #FF436E colored shadow looks like.

```
.shadow{ text-shadow: 4px 4px 2px #FF436E
}
```

Border

The CSS property to change the border of an element to Decimal 16728942 is called "border". The border property can be set on classes, ids or directly on the HTML element.

This example shows the color as border, it can be applied via the CSS property "border" or "border-color".

```
.border, #border, table{ border:4px solid
#FF436E }
```

If only the border color should be changed use the property `border-color`.

```
.border{ border-color:#FF436E }
```

If you want to add a box shadow in that color use:

Here you see how a box with a 4 pixel #FF436E colored shadow looks like.

```
.boxshadow{ -moz-box-shadow:4px 4px 4px  
4px #FF436E; -webkit-box-shadow:4px 4px  
4px 4px #FF436E; box-shadow:4px 4px 4px  
4px #FF436E }
```

Background

The CSS property to change the background color of an element to Decimal 16728942 is called "background". The background property can be set on classes, ids or directly on the HTML element.

```
.background, #background, body{  
background:#FF436E }
```

If only the background color should be changed can be used:

```
.background{ background-color:#FF436E }
```

This example shows the color as background, it is applied via the CSS property "background".

To optimize and compress your CSS code, you can use our [online CSS compressor and optimizer](#) based on csstidy. If you want to create a linear or radial gradient as background or border, check our [CSS Gradient Generator](#).

Hey! You found this booklet interesting? Support Converting Colors with the new Membership Option!

The pro membership hides all ads, plus gives you double the colors in the color bucket, and more awesome pro features!

[Learn more, Memberships starting at \\$2.50/m!](#)

**Follow me
on Twitter!**

@ConvertingColor