

# Converting Colors

Decimal(16729210)

Have a look what the booklet for  
Decimal(16729210) contains.

<b>Decimal(16729210)</b> .....	3
<i><b>Conversions</b></i> .....	4
<i><b>Details</b></i> .....	6
<i><b>Harmonies</b></i> .....	11
<i><b>Previews</b></i> .....	23
<i><b>Color Blindness Simulation</b></i> .....	26
<i><b>CSS Examples</b></i> .....	29

# Color

**Decimal(16729210)**

# Conversions

## Conversions Part 1

Format	Color
Hex	FF447A
RGB	255, 68, 122
RGB Percent	100%, 27%, 48%
CMY	0.0000, 0.7333, 0.5216
CMYK	0.00, 0.73, 0.52, 0.00
HSL	343°, 100%, 63%
HSV	343°, 73%, 100%
XYZ	46.8200, 26.7994, 21.1175
YIQ	130.0690, 94.1180, 56.4380

# Conversions

## Conversions Part 2

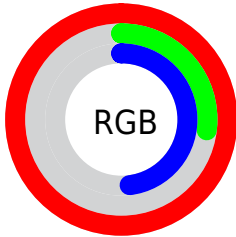
<b>Format</b>	<b>Color</b>
<b>R<sub>YB</sub></b>	255, 68, 122
Decimal	16729210
CIE <sub>Lab</sub>	58.79, 72.52, 13.18
CIE <sub>LCh</sub>	59, 73.707, 10.298
Yxy	26.7994, 0.4942, 0.2829
Android (android.graphics.Color)	4294919290 (0xFFFF447A)
YUV	130.0690, -3.9780, 109.5645
Hunter-Lab	51.7681, 70.8442, 12.0519

# Details

The Decimal color **16729210** is a dark color, and the websafe version is hex **FF3366**. The color can be described as middle washed rose. A complement of this color would be **4521929**, and the grayscale version is **8553090**.

A 20% lighter version of the original color is **16745134**, and **12582986** is the 20% darker color. If you saturate the color by 10%, you get **16722536**, and if you desaturate by 10%, it is **16735628**.

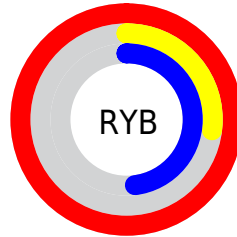
# Distribution



Red (100%)

Green (27%)

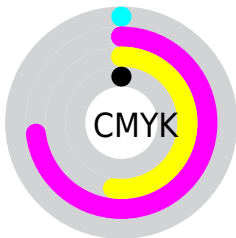
Blue (48%)



Red (100%)

Yellow (27%)

Blue (48%)

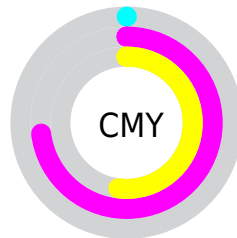


Cyan (0%)

Magenta (73%)

Yellow (52%)

Black (0%)



Cyan (0%)

Magenta (73%)

Yellow (52%)

# Brightness & Saturation Gradients

These gradients show how the Decimal color 16729210 changes by changing the brightness by 10 percent. The first figure shows a shift by +10% for each color and the second figure -10%.

Similar to the brightness gradients but the following saturation gradients show a change of the Decimal color 16729210 by changing the saturation by 10% instead.



 16729210

 16729210

16777215

 14621793

 16745134

 12582986

 16752585

 10551348

 16760293

 8519711

 16767999

 6553606

 16775679

 4653060

 2490369

 0

 16729210

 16729210

■ 16722536

■ 16735628

■ 16716118

■ 16742302

■ 16711754

■ 16748976

■ 16755395

■ 16761813

■ 16768487

■ 16774905

16777215

# Harmonies

## Analogous

The Analogous color harmony consists of three colors that are next to each other on the color wheel.



15356091



16729210



15883324

# Triad

The Triadic color harmony groups three colors that are evenly spaced from another and form a triangle on the color wheel.



16729210



5021721



41215

# Complementary

The Complementary color scheme is a pair of colors which are on the opposite of each other on the color wheel.



16729210



4521929

# Split Complementary

Split-complementary colors differ from the complementary color scheme. The scheme consists of three colors, the original color and two neighbors of the complement color.



43488



16729210



43103

# Square

The Square scheme is like the rectangle color scheme, but the four colors are evenly spaced on the color wheel.



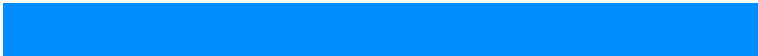
16729210



9867776



43683



36607

# Rectangle

The Rectangle color scheme consists of four colors that form a rectangle on the color wheel.



16729210



14381326



43683



42238



# Sweetspot

The Sweet Spot groups the original color and five complimentary colors.



16729210



16762839



13059327



8412776



0



8421504



# Same Dimension

The Same Dimension uses a secret algorithm to generate beautiful new colors.



16729210



16719711



16738628



8418166



12517431



4194322



# Inverse Universe

The Inverse Universe completely reimagines the original color for something new.



16729210



16719711



4512511



8418166



12517431



4194322



# Previews

## White Background



This preview shows how the Decimal color 16729210 looks on a white background.

## Color Contrast Check

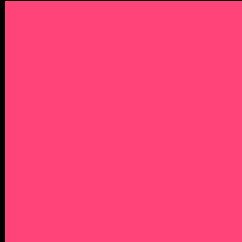
Large Text (above 18pt) WCAG AA ✓ Pass

Any Text WCAG AA × Fail

Large Text (above 18pt) WCAG AAA × Fail

Any Text WCAG AAA × Fail

# Black Background



This preview shows how the Decimal color 16729210 looks on a black background.

## Color Contrast Check

Large Text (above 18pt) WCAG AA ✓ Pass

Any Text WCAG AA ✓ Pass

Large Text (above 18pt) WCAG AAA ✓ Pass

Any Text WCAG AAA × Fail

If you want to check with other color combinations, try the [Color Contrast Checker](#).



## Decimal 16729210 Background



This preview shows how black text looks on a background with the Decimal color 16729210.




This preview shows how white text looks on a background with the Decimal color 16729210.

# Color Blindness Simulation

Color vision deficiency is a very complex topic, and I could not describe the different causes any better than Wikipedia does, so if you want to learn more, you should check out their [article about color blindness](#).

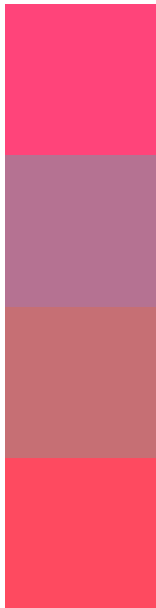
## Dichromacy





**Tritanopia**  
16600401

# Trichromacy



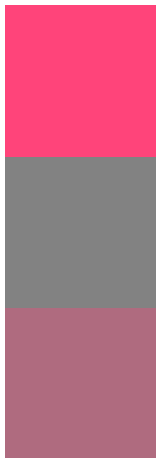
**Original Color**  
16729210

**Protanomaly**  
11891346

**Deuteranomaly**  
13004660

**Tritanomaly**  
16665184

# Monochromacy



**Original Color**  
16729210

**Achromatopsia**  
8553090

**Achromatomaly**  
11496319

# CSS Examples

## Text

The CSS property to change the color of the text to Decimal 16729210 is called "color". The color property can be set on classes, ids or directly on the HTML element.

This example shows how text in the color #FF447A looks like.

```
.text, #text, p{  
  color:#FF447A  
}
```

If you want to add a text shadow in that color use the text-shadow property, you can generate a text shadow directly with our [CSS Text Shadow Generator](#).

Here you see how black text with a 4 pixel #FF447A colored shadow looks like.

```
.shadow{ text-shadow: 4px 4px 2px #FF447A
}
```

## Border

The CSS property to change the border of an element to Decimal 16729210 is called "border". The border property can be set on classes, ids or directly on the HTML element.

This example shows the color as border, it can be applied via the CSS property "border" or "border-color".

```
.border, #border, table{ border:4px solid
#FF447A }
```

If only the border color should be changed use the property `border-color`.

```
.border{ border-color:#FF447A }
```

If you want to add a box shadow in that color use:

Here you see how a box with a 4 pixel #FF447A colored shadow looks like.

```
.boxshadow{ -moz-box-shadow:4px 4px 4px  
4px #FF447A; -webkit-box-shadow:4px 4px  
4px 4px #FF447A; box-shadow:4px 4px 4px  
4px #FF447A }
```

# Background

The CSS property to change the background color of an element to Decimal 16729210 is called "background". The background property can be set on classes, ids or directly on the HTML element.

```
.background, #background, body{  
background:#FF447A }
```

If only the background color should be changed can be used:

```
.background{ background-color:#FF447A }
```

This example shows the color as background, it is applied via the CSS property "background".

To optimize and compress your CSS code, you can use our [online CSS compressor and optimizer](#) based on csstidy. If you want to create a linear or radial gradient as background or border, check our [CSS Gradient Generator](#).



Hey! You found this booklet interesting? Support Converting Colors with the new Membership Option!

The pro membership hides all ads, plus gives you double the colors in the color bucket, and more awesome pro features!

**[Learn more, Memberships starting at \\$2.50/m!](#)**

**Follow me  
on Twitter!**

@ConvertingColor