

# Converting Colors

Decimal(16729964)

Have a look what the booklet for  
Decimal(16729964) contains.

<b>Decimal(16729964)</b> .....	3
<i><b>Conversions</b></i> .....	4
<i><b>Details</b></i> .....	6
<i><b>Harmonies</b></i> .....	11
<i><b>Previews</b></i> .....	23
<i><b>Color Blindness Simulation</b></i> .....	26
<i><b>CSS Examples</b></i> .....	29

**Color**

**Decimal(16729964)**

# Conversions

## Conversions Part 1

<b>Format</b>	<b>Color</b>
Hex	FF476C
RGB	255, 71, 108
RGB Percent	100%, 28%, 42%
CMY	0.0000, 0.7216, 0.5765
CMYK	0.00, 0.72, 0.58, 0.00
HSL	348°, 100%, 64%
HSV	348°, 72%, 100%
XYZ	46.2000, 26.8492, 16.9348
YIQ	130.2340, 97.7870, 50.5150

# Conversions

## Conversions Part 2

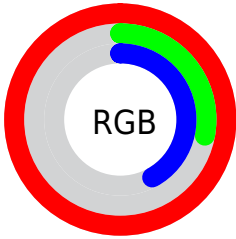
<b>Format</b>	<b>Color</b>
<b>R<sub>YB</sub></b>	255, 71, 108
Decimal	16729964
CIE <sub>Lab</sub>	58.83, 70.57, 21.47
CIE <sub>LCh</sub>	59, 73.762, 16.921
Yxy	26.8492, 0.5134, 0.2984
Android (android.graphics.Color)	4294920044 (0xFFFF476C)
YUV	130.2340, -10.9614, 109.4198
Hunter-Lab	51.8162, 68.4746, 16.8940

# Details

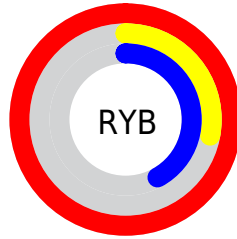
The Decimal color **16729964** is a dark color, and the websafe version is hex **FF3366**. The color can be described as middle washed rose. A complement of this color would be **4718554**, and the grayscale version is **8553090**.

A 20% lighter version of the original color is **16745631**, and **12517437** is the 20% darker color. If you saturate the color by 10%, you get **16723544**, and if you desaturate by 10%, it is **16736640**.

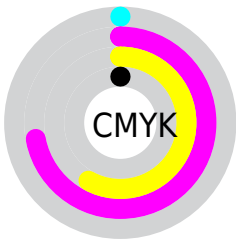
# Distribution



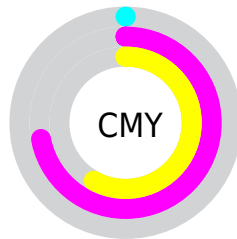
- Red (100%)
- Green (28%)
- Blue (42%)



- Red (100%)
- Yellow (28%)
- Blue (42%)



- Cyan (0%)
- Magenta (72%)
- Yellow (58%)
- Black (0%)



- Cyan (0%)
- Magenta (72%)
- Yellow (58%)

# Brightness & Saturation Gradients

These gradients show how the Decimal color 16729964 changes by changing the brightness by 10 percent. The first figure shows a shift by +10% for each color and the second figure -10%.

Similar to the brightness gradients but the following saturation gradients show a change of the Decimal color 16729964 by changing the saturation by 10% instead.



 16729964

 16729964

16777215

 14623316

 16745631

 12517437

 16753082

 10485800

 16760790

 8454164

 16768242

 6422529

 16775935

 4521987

 2359297

 0

 16729964

 16729964

■ 16723544

■ 16736640

■ 16716867

■ 16743061

■ 16711731

■ 16749481

■ 16756157

■ 16762834

■ 16769254

■ 16775931

16777215

# Harmonies

## Analogous

The Analogous color harmony consists of three colors that are next to each other on the color wheel.



15878829



16729964



15491887

# Triad

The Triadic color harmony groups three colors that are evenly spaced from another and form a triangle on the color wheel.



16729964



3318314



40447

# Complementary

The Complementary color scheme is a pair of colors which are on the opposite of each other on the color wheel.



16729964



4718554

# Split Complementary

Split-complementary colors differ from the complementary color scheme. The scheme consists of three colors, the original color and two neighbors of the complement color.



43243



16729964



43374

# Square

The Square scheme is like the rectangle color scheme, but the four colors are evenly spaced on the color wheel.



16729964



8951296



43953



4229631

# Rectangle

The Rectangle color scheme consists of four colors that form a rectangle on the color wheel.



16729964



13793024



43953



41727



# Sweetspot

The Sweet Spot groups the original color and five complimentary colors.



16729964



16762834



14108671



8412773



0



8421504



# Same Dimension

The Same Dimension uses a secret algorithm to generate beautiful new colors.



16729964



16720206



16743239



8418165



12517414



4194317



# Inverse Universe

The Inverse Universe completely reimagines the original color for something new.



16729964



16720206



4705279



8418165



12517414



4194317



# Previews

## White Background



This preview shows how the Decimal color 16729964 looks on a white background.

## Color Contrast Check

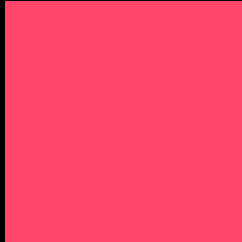
Large Text (above 18pt) WCAG AA ✓ Pass

Any Text WCAG AA × Fail

Large Text (above 18pt) WCAG AAA × Fail

Any Text WCAG AAA × Fail

# Black Background



This preview shows how the Decimal color 16729964 looks on a black background.

## Color Contrast Check

Large Text (above 18pt) WCAG AA ✓ Pass

Any Text WCAG AA ✓ Pass

Large Text (above 18pt) WCAG AAA ✓ Pass

Any Text WCAG AAA × Fail

If you want to check with other color combinations, try the [Color Contrast Checker](#).



## Decimal 16729964 Background



This preview shows how black text looks on a background with the Decimal color 16729964.



This preview shows how white text looks on a background with the Decimal color 16729964.

# Color Blindness Simulation

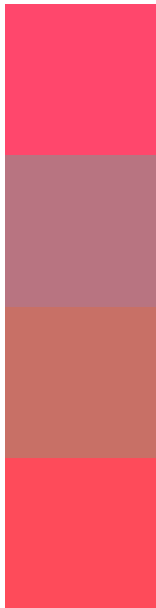
Color vision deficiency is a very complex topic, and I could not describe the different causes any better than Wikipedia does, so if you want to learn more, you should check out their [article about color blindness](#).

## Dichromacy





# Trichromacy



**Original Color**  
16729964

**Protanomaly**  
12088449

**Deuteranomaly**  
13135974

**Tritanomaly**  
16665434

# Monochromacy



**Original Color**  
16729964

**Achromatopsia**  
8553090

**Achromatomaly**  
11496826

# CSS Examples

## Text

The CSS property to change the color of the text to Decimal 16729964 is called "color". The color property can be set on classes, ids or directly on the HTML element.

This example shows how text in the color #FF476C looks like.

```
.text, #text, p{  
    color:#FF476C  
}
```

If you want to add a text shadow in that color use the text-shadow property, you can generate a text shadow directly with our [CSS Text Shadow Generator](#).

Here you see how black text with a 4 pixel #FF476C colored shadow looks like.

```
.shadow{ text-shadow: 4px 4px 2px #FF476C
}
```

## Border

The CSS property to change the border of an element to Decimal 16729964 is called "border". The border property can be set on classes, ids or directly on the HTML element.

This example shows the color as border, it can be applied via the CSS property "border" or "border-color".

```
.border, #border, table{ border:4px solid
#FF476C }
```

If only the border color should be changed use the property `border-color`.

```
.border{ border-color:#FF476C }
```

If you want to add a box shadow in that color use:

Here you see how a box with a 4 pixel #FF476C colored shadow looks like.

```
.boxshadow{ -moz-box-shadow:4px 4px 4px  
4px #FF476C; -webkit-box-shadow:4px 4px  
4px 4px #FF476C; box-shadow:4px 4px 4px  
4px #FF476C }
```

# Background

The CSS property to change the background color of an element to Decimal 16729964 is called "background". The background property can be set on classes, ids or directly on the HTML element.

```
.background, #background, body{  
background:#FF476C }
```

If only the background color should be changed can be used:

```
.background{ background-color:#FF476C }
```

This example shows the color as background, it is applied via the CSS property "background".

To optimize and compress your CSS code, you can use our [online CSS compressor and optimizer](#) based on csstidy. If you want to create a linear or radial gradient as background or border, check our [CSS Gradient Generator](#).



Hey! You found this booklet interesting? Support Converting Colors with the new Membership Option!

The pro membership hides all ads, plus gives you double the colors in the color bucket, and more awesome pro features!

**[Learn more, Memberships starting at \\$2.50/m!](#)**

**Follow me  
on Twitter!**

@ConvertingColor