

Converting Colors

Decimal(16730732)

Have a look what the booklet for
Decimal(16730732) contains.

Decimal(16730732)	3
<i>Conversions</i>	4
<i>Details</i>	6
<i>Harmonies</i>	11
<i>Previews</i>	23
<i>Color Blindness Simulation</i>	26
<i>CSS Examples</i>	29

Color

Decimal(16730732)

Conversions

Conversions Part 1

Format	Color
Hex	FF4A6C
RGB	255, 74, 108
RGB Percent	100%, 29%, 42%
CMY	0.0000, 0.7098, 0.5765
CMYK	0.00, 0.71, 0.58, 0.00
HSL	349°, 100%, 65%
HSV	349°, 71%, 100%
XYZ	46.3956, 27.2403, 16.9999
YIQ	131.9950, 96.9620, 48.9460

Conversions

Conversions Part 2

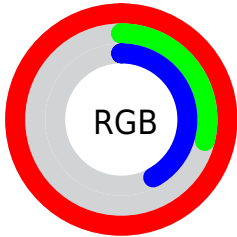
Format	Color
R_{YB}	255, 74, 108
Decimal	16730732
CIE Lab	59.20, 69.56, 21.95
CIE LCh	59, 72.947, 17.515
Yxy	27.2403, 0.5119, 0.3005
Android (android.graphics.Color)	4294920812 (0xFFFF4A6C)
YUV	131.9950, -11.8295, 107.8754
Hunter-Lab	52.1922, 67.3388, 17.2227

Details

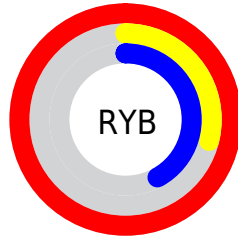
The Decimal color **16730732** is a dark color, and the websafe version is hex **FF3366**. The color can be described as middle washed rose. A complement of this color would be **4915165**, and the grayscale version is **8684676**.

A 20% lighter version of the original color is **16746143**, and **12582973** is the 20% darker color. If you saturate the color by 10%, you get **16724311**, and if you desaturate by 10%, it is **16737409**.

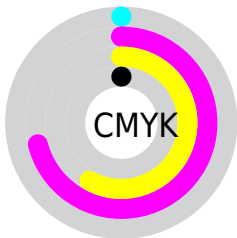
Distribution



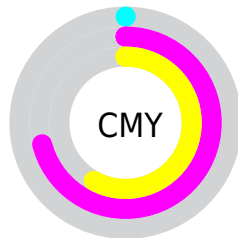
- Red (100%)
- Green (29%)
- Blue (42%)



- Red (100%)
- Yellow (29%)
- Blue (42%)



- Cyan (0%)
- Magenta (71%)
- Yellow (58%)
- Black (0%)



- Cyan (0%)
- Magenta (71%)
- Yellow (58%)

Brightness & Saturation Gradients

These gradients show how the Decimal color 16730732 changes by changing the brightness by 10 percent. The first figure shows a shift by +10% for each color and the second figure -10%.

Similar to the brightness gradients but the following saturation gradients show a change of the Decimal color 16730732 by changing the saturation by 10% instead.

 16730732

 16730732

16777215

 14624340

 16746143

 12582973

 16753594

 10485800

 16761302

 8454164

 16768754

 6488065

 16776703

 4587523

 2424833

 0

 16730732

 16730732

■ 16724311

■ 16737409

■ 16717635

■ 16743829

■ 16711728

■ 16750506

■ 16756927

■ 16763604

■ 16770024

■ 16776701

16777215

Harmonies

Analogous

The Analogous color harmony consists of three colors that are next to each other on the color wheel.



15944876



16730732



15426864

Triad

The Triadic color harmony groups three colors that are evenly spaced from another and form a triangle on the color wheel.



16730732



3384110



40703

Complementary

The Complementary color scheme is a pair of colors which are on the opposite of each other on the color wheel.



16730732



4915165

Split Complementary

Split-complementary colors differ from the complementary color scheme. The scheme consists of three colors, the original color and two neighbors of the complement color.



43244



16730732



43633

Square

The Square scheme is like the rectangle color scheme, but the four colors are evenly spaced on the color wheel.



16730732



8951552



43955



4819455

Rectangle

The Rectangle color scheme consists of four colors that form a rectangle on the color wheel.



16730732



13728000



43955



41727

Sweetspot

The Sweet Spot groups the original color and five complimentary colors.



16730732



16763348



14371583



8413286



0



8421504

Same Dimension

The Same Dimension uses a secret algorithm to generate beautiful new colors.



16730732



16721487



16744522



8418165



12517412



4194316

Inverse Universe

The Inverse Universe completely reimagines the original color for something new.



16730732



16721487



4901375



8418165



12517412



4194316

Previews

White Background



This preview shows how the Decimal color 16730732 looks on a white background.

Color Contrast Check

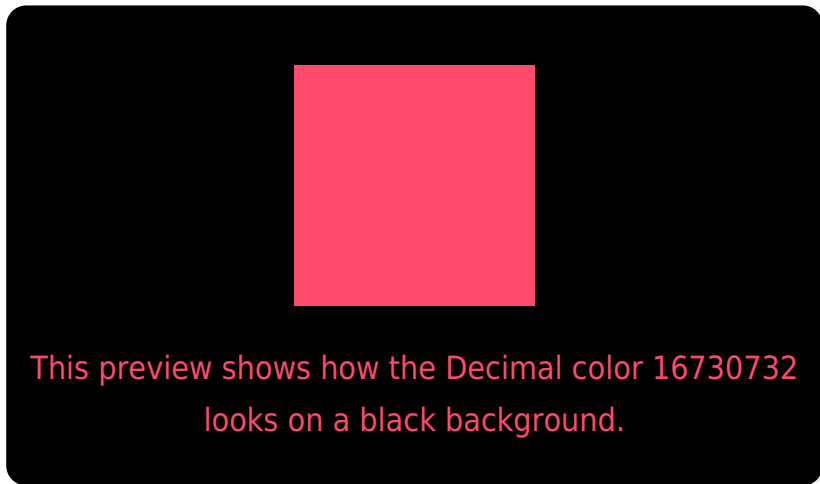
Large Text (above 18pt) WCAG AA ✓ Pass

Any Text WCAG AA × Fail

Large Text (above 18pt) WCAG AAA × Fail

Any Text WCAG AAA × Fail

Black Background



Color Contrast Check

Large Text (above 18pt) WCAG AA ✓ Pass

Any Text WCAG AA ✓ Pass

Large Text (above 18pt) WCAG AAA ✓ Pass

Any Text WCAG AAA × Fail

If you want to check with other color combinations, try the [Color Contrast Checker](#).

Decimal 16730732 Background



This preview shows how black text looks on a background with the Decimal color 16730732.

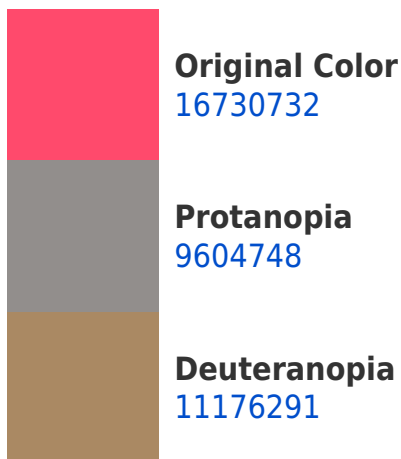



This preview shows how white text looks on a background with the Decimal color 16730732.

Color Blindness Simulation

Color vision deficiency is a very complex topic, and I could not describe the different causes any better than Wikipedia does, so if you want to learn more, you should check out their [article about color blindness](#).

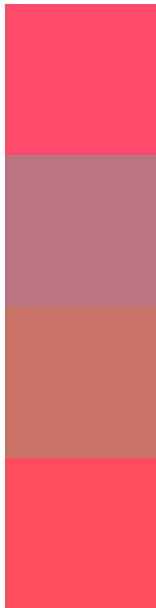
Dichromacy





Tritanopia
16666451

Trichromacy



Original Color
16730732

Protanomaly
12219776

Deuteranomaly
13202022

Tritanomaly
16665948

Monochromacy



Original Color
16730732

Achromatopsia
8684676

Achromatomaly
11628411

CSS Examples

Text

The CSS property to change the color of the text to Decimal 16730732 is called "color". The color property can be set on classes, ids or directly on the HTML element.

This example shows how text in the color #FF4A6C looks like.

```
.text, #text, p{  
  color:#FF4A6C  
}
```

If you want to add a text shadow in that color use the text-shadow property, you can generate a text shadow directly with our [CSS Text Shadow Generator](#).

Here you see how black text with a 4 pixel #FF4A6C colored shadow looks like.

```
.shadow{ text-shadow: 4px 4px 2px #FF4A6C
}
```

Border

The CSS property to change the border of an element to Decimal 16730732 is called "border". The border property can be set on classes, ids or directly on the HTML element.

This example shows the color as border, it can be applied via the CSS property "border" or "border-color".

```
.border, #border, table{ border:4px solid
#FF4A6C }
```

If only the border color should be changed use the property `border-color`.

```
.border{ border-color:#FF4A6C }
```

If you want to add a box shadow in that color use:

Here you see how a box with a 4 pixel #FF4A6C colored shadow looks like.

```
.boxshadow{ -moz-box-shadow:4px 4px 4px  
4px #FF4A6C; -webkit-box-shadow:4px 4px  
4px 4px #FF4A6C; box-shadow:4px 4px 4px  
4px #FF4A6C }
```

Background

The CSS property to change the background color of an element to Decimal 16730732 is called "background". The background property can be set on classes, ids or directly on the HTML element.

```
.background, #background, body{  
background:#FF4A6C }
```

If only the background color should be changed can be used:

```
.background{ background-color:#FF4A6C }
```

This example shows the color as background, it is applied via the CSS property "background".

To optimize and compress your CSS code, you can use our [online CSS compressor and optimizer](#) based on csstidy. If you want to create a linear or radial gradient as background or border, check our [CSS Gradient Generator](#).

Hey! You found this booklet interesting? Support Converting Colors with the new Membership Option!

The pro membership hides all ads, plus gives you double the colors in the color bucket, and more awesome pro features!

[Learn more, Memberships starting at \\$2.50/m!](#)

**Follow me
on Twitter!**

@ConvertingColor