

Converting Colors

Decimal(16730733)

Have a look what the booklet for
Decimal(16730733) contains.

Decimal(16730733)	3
<i>Conversions</i>	4
<i>Details</i>	6
<i>Harmonies</i>	11
<i>Previews</i>	23
<i>Color Blindness Simulation</i>	26
<i>CSS Examples</i>	29

Color

Decimal(16730733)

Conversions

Conversions Part 1

Format	Color
Hex	FF4A6D
RGB	255, 74, 109
RGB Percent	100%, 29%, 43%
CMY	0.0000, 0.7098, 0.5725
CMYK	0.00, 0.71, 0.57, 0.00
HSL	348°, 100%, 65%
HSV	348°, 71%, 100%
XYZ	46.4491, 27.2617, 17.2819
YIQ	132.1090, 96.6410, 49.2570

Conversions

Conversions Part 2

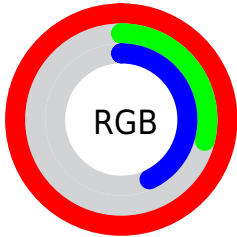
Format	Color
R_{YB}	255, 74, 109
Decimal	16730733
CIE _{Lab}	59.22, 69.63, 21.40
CIE _{LCh}	59, 72.844, 17.081
Yxy	27.2617, 0.5105, 0.2996
Android (android.graphics.Color)	4294920813 (0xFFFF4A6D)
YUV	132.1090, -11.3927, 107.7754
Hunter-Lab	52.2127, 67.4236, 16.9245

Details

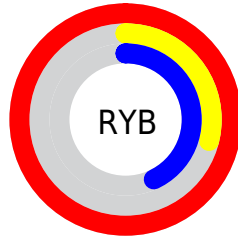
The Decimal color **16730733** is a dark color, and the websafe version is hex **FF3366**. The color can be described as middle washed rose. A complement of this color would be **4915164**, and the grayscale version is **8684676**.

A 20% lighter version of the original color is **16746144**, and **12582974** is the 20% darker color. If you saturate the color by 10%, you get **16724312**, and if you desaturate by 10%, it is **16737410**.

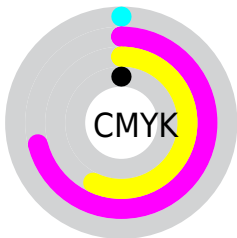
Distribution



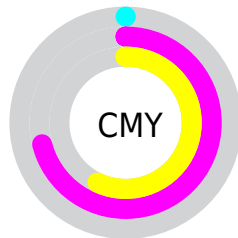
- Red (100%)
- Green (29%)
- Blue (43%)



- Red (100%)
- Yellow (29%)
- Blue (43%)



- Cyan (0%)
- Magenta (71%)
- Yellow (57%)
- Black (0%)



- Cyan (0%)
- Magenta (71%)
- Yellow (57%)

Brightness & Saturation Gradients

These gradients show how the Decimal color 16730733 changes by changing the brightness by 10 percent. The first figure shows a shift by +10% for each color and the second figure -10%.

Similar to the brightness gradients but the following saturation gradients show a change of the Decimal color 16730733 by changing the saturation by 10% instead.

 16730733

 16730733

16777215

 14624341

 16746144

 12582974

 16753595

 10485801

 16761303

 8454165

 16768755

 6488065

 16776703

 4587523

 2424833

 0

 16730733

 16730733

■ 16724312

■ 16737410

■ 16717636

■ 16743830

■ 16711729

■ 16750507

■ 16756927

■ 16763604

■ 16770024

■ 16776701

16777215

Harmonies

Analogous

The Analogous color harmony consists of three colors that are next to each other on the color wheel.



15879597



16730733



15492401

Triad

The Triadic color harmony groups three colors that are evenly spaced from another and form a triangle on the color wheel.



16730733



3515181



40703

Complementary

The Complementary color scheme is a pair of colors which are on the opposite of each other on the color wheel.



16730733



4915164

Split Complementary

Split-complementary colors differ from the complementary color scheme. The scheme consists of three colors, the original color and two neighbors of the complement color.



43244



16730733



43632

Square

The Square scheme is like the rectangle color scheme, but the four colors are evenly spaced on the color wheel.



16730733



9017088



43954



4622847

Rectangle

The Rectangle color scheme consists of four colors that form a rectangle on the color wheel.



16730733



13793536



43954



41727

Sweetspot

The Sweet Spot groups the original color and five complimentary colors.



16730733



16763348



14371583



8413286



0



8421504

Same Dimension

The Same Dimension uses a secret algorithm to generate beautiful new colors.



16730733



16721488



16744522



8418165



12517413



4194316

Inverse Universe

The Inverse Universe completely reimagines the original color for something new.



16730733



16721488



4901375



8418165



12517413



4194316

Previews

White Background



This preview shows how the Decimal color 16730733 looks on a white background.

Color Contrast Check

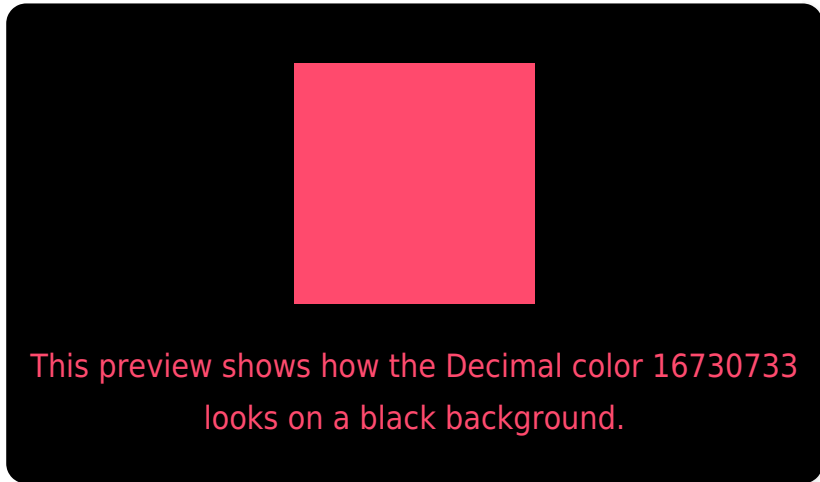
Large Text (above 18pt) WCAG AA ✓ Pass

Any Text WCAG AA ✗ Fail

Large Text (above 18pt) WCAG AAA ✗ Fail

Any Text WCAG AAA ✗ Fail

Black Background



Color Contrast Check

Large Text (above 18pt) WCAG AA ✓ Pass

Any Text WCAG AA ✓ Pass

Large Text (above 18pt) WCAG AAA ✓ Pass

Any Text WCAG AAA × Fail

If you want to check with other color combinations, try the [Color Contrast Checker](#).

Decimal 16730733 Background



This preview shows how black text looks on a background with the Decimal color 16730733.

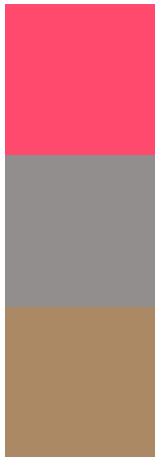


This preview shows how white text looks on a background with the Decimal color 16730733.

Color Blindness Simulation

Color vision deficiency is a very complex topic, and I could not describe the different causes any better than Wikipedia does, so if you want to learn more, you should check out their [article about color blindness](#).


Dichromacy



Original Color
16730733

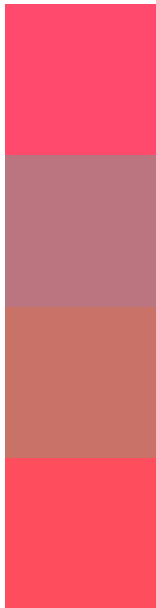
Protanopia
9604749

Deuteranopia
11176292



Tritanopia
16666451

Trichromacy



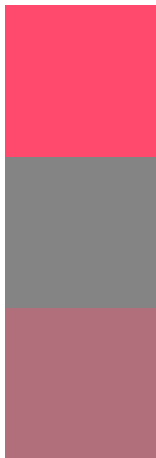
Original Color
16730733

Protanomaly
12219777

Deuteranomaly
13202023

Tritanomaly
16665948

Monochromacy



Original Color
16730733

Achromatopsia
8684676

Achromatomaly
11628412

CSS Examples

Text

The CSS property to change the color of the text to Decimal 16730733 is called "color". The color property can be set on classes, ids or directly on the HTML element.

This example shows how text in the color #FF4A6D looks like.

```
.text, #text, p{  
    color:#FF4A6D  
}
```

If you want to add a text shadow in that color use the text-shadow property, you can generate a text shadow directly with our [CSS Text Shadow Generator](#).

Here you see how black text with a 4 pixel #FF4A6D colored shadow looks like.

```
.shadow{ text-shadow: 4px 4px 2px #FF4A6D
}
```

Border

The CSS property to change the border of an element to Decimal 16730733 is called "border". The border property can be set on classes, ids or directly on the HTML element.

This example shows the color as border, it can be applied via the CSS property "border" or "border-color".

```
.border, #border, table{ border:4px solid
#FF4A6D }
```

If only the border color should be changed use the property `border-color`.

```
.border{ border-color:#FF4A6D }
```

If you want to add a box shadow in that color use:

Here you see how a box with a 4 pixel #FF4A6D colored shadow looks like.

```
.boxshadow{ -moz-box-shadow:4px 4px 4px  
4px #FF4A6D; -webkit-box-shadow:4px 4px  
4px 4px #FF4A6D; box-shadow:4px 4px 4px  
4px #FF4A6D }
```

Background

The CSS property to change the background color of an element to Decimal 16730733 is called "background". The background property can be set on classes, ids or directly on the HTML element.

```
.background, #background, body{  
background:#FF4A6D }
```

If only the background color should be changed can be used:

```
.background{ background-color:#FF4A6D }
```

This example shows the color as background, it is applied via the CSS property "background".

To optimize and compress your CSS code, you can use our [online CSS compressor and optimizer](#) based on csstidy. If you want to create a linear or radial gradient as background or border, check our [CSS Gradient Generator](#).

Hey! You found this booklet interesting? Support Converting Colors with the new Membership Option!

The pro membership hides all ads, plus gives you double the colors in the color bucket, and more awesome pro features!

[Learn more, Memberships starting at \\$2.50/m!](#)

**Follow me
on Twitter!**

@ConvertingColor