

Converting Colors

Decimal(16732030)

Have a look what the booklet for
Decimal(16732030) contains.

Decimal(16732030)	3
<i>Conversions</i>	4
<i>Details</i>	6
<i>Harmonies</i>	11
<i>Previews</i>	23
<i>Color Blindness Simulation</i>	26
<i>CSS Examples</i>	29

Color

Decimal(16732030)

Conversions

Conversions Part 1

Format	Color
Hex	FF4F7E
RGB	255, 79, 126
RGB Percent	100%, 31%, 49%
CMY	0.0000, 0.6902, 0.5059
CMYK	0.00, 0.69, 0.51, 0.00
HSL	344°, 100%, 65%
HSV	344°, 69%, 100%
XYZ	47.8019, 28.3583, 22.6929
YIQ	136.9820, 89.8090, 51.9290

Conversions

Conversions Part 2

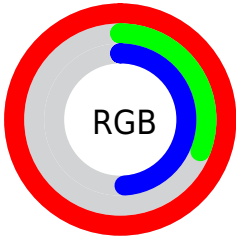
Format	Color
R_{YB}	255, 79, 126
Decimal	16732030
CIE _{Lab}	60.21, 69.13, 12.82
CIE _{LCh}	60, 70.306, 10.506
Yxy	28.3583, 0.4836, 0.2869
Android (android.graphics.Color)	4294922110 (0xFFFF4F7E)
YUV	136.9820, -5.4141, 103.5018
Hunter-Lab	53.2525, 67.0377, 12.0111

Details

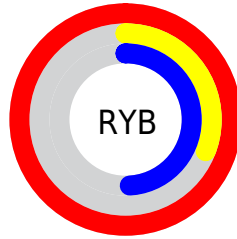
The Decimal color **16732030** is a dark color, and the websafe version is hex **FF3366**. The color can be described as middle washed rose. A complement of this color would be **5242832**, and the grayscale version is **9013641**.

A 20% lighter version of the original color is **16747186**, and **12582989** is the 20% darker color. If you saturate the color by 10%, you get **16725611**, and if you desaturate by 10%, it is **16738705**.

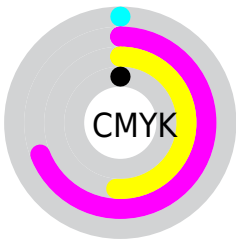
Distribution



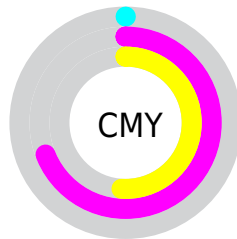
- Red (100%)
- Green (31%)
- Blue (49%)



- Red (100%)
- Yellow (31%)
- Blue (49%)



- Cyan (0%)
- Magenta (69%)
- Yellow (51%)
- Black (0%)



- Cyan (0%)
- Magenta (69%)
- Yellow (51%)

Brightness & Saturation Gradients

These gradients show how the Decimal color 16732030 changes by changing the brightness by 10 percent. The first figure shows a shift by +10% for each color and the second figure -10%.

Similar to the brightness gradients but the following saturation gradients show a change of the Decimal color 16732030 by changing the saturation by 10% instead.

 16732030

 16732030

16777215

 14626149

 16747186

 12582989

 16754894

 10551351

 16762346

 8585250

 16770047

 6619148

 4784132

 2621441

 0

 16732030

 16732030

■ 16725611

■ 16738705

■ 16718937

■ 16745123

■ 16712518

■ 16751798

■ 16711748

■ 16758217

■ 16764891

■ 16771310

16777215

Harmonies

Analogous

The Analogous color harmony consists of three colors that are next to each other on the color wheel.



15423932



16732030



15950659

Triad

The Triadic color harmony groups three colors that are evenly spaced from another and form a triangle on the color wheel.



16732030



5546791



41983

Complementary

The Complementary color scheme is a pair of colors which are on the opposite of each other on the color wheel.



16732030



5242832

Split Complementary

Split-complementary colors differ from the complementary color scheme. The scheme consists of three colors, the original color and two neighbors of the complement color.



44257



16732030



43877

Square

The Square scheme is like the rectangle color scheme, but the four colors are evenly spaced on the color wheel.



16732030



10130688



44454



37375

Rectangle

The Rectangle color scheme consists of four colors that form a rectangle on the color wheel.



16732030



14513693



44454



43005

Sweetspot

The Sweet Spot groups the original color and five complimentary colors.



16732030



16763352



13455359



8413288



0



8421504

Same Dimension

The Same Dimension uses a secret algorithm to generate beautiful new colors.



16732030



16722788



16741711



8418166



12517427



4194321

Inverse Universe

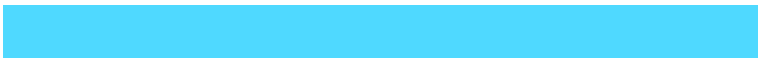
The Inverse Universe completely reimagines the original color for something new.



16732030



16722788



5233151



8418166



12517427



4194321

Previews

White Background



This preview shows how the Decimal color 16732030 looks on a white background.

Color Contrast Check

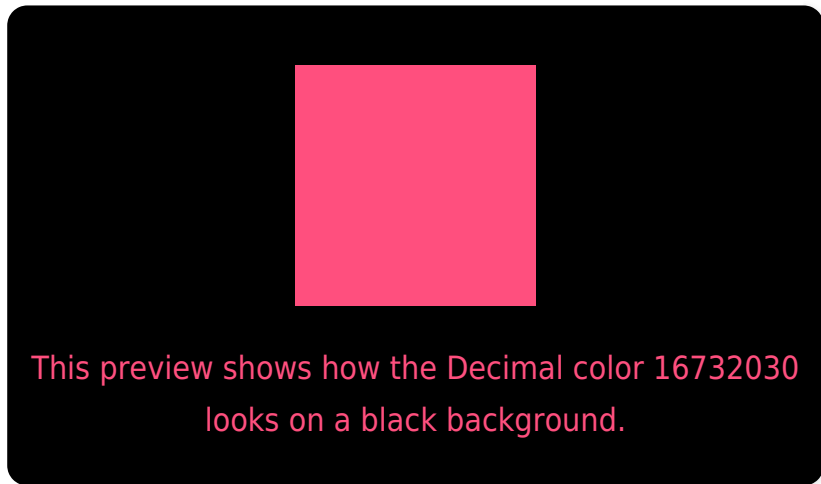
Large Text (above 18pt) WCAG AA ✓ Pass

Any Text WCAG AA × Fail

Large Text (above 18pt) WCAG AAA × Fail

Any Text WCAG AAA × Fail

Black Background



Color Contrast Check

Large Text (above 18pt) WCAG AA ✓ Pass

Any Text WCAG AA ✓ Pass

Large Text (above 18pt) WCAG AAA ✓ Pass

Any Text WCAG AAA × Fail

If you want to check with other color combinations, try the [Color Contrast Checker](#).

Decimal 16732030 Background



This preview shows how black text looks on a background with the Decimal color 16732030.



This preview shows how white text looks on a background with the Decimal color 16732030.

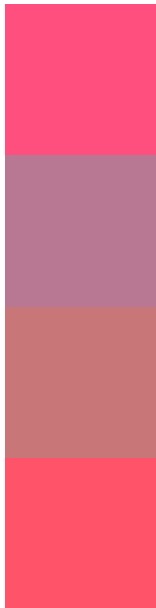
Color Blindness Simulation

Color vision deficiency is a very complex topic, and I could not describe the different causes any better than Wikipedia does, so if you want to learn more, you should check out their [article about color blindness](#).

Dichromacy



Trichromacy



Original Color
16732030

Protanomaly
12089492

Deuteranomaly
13137528

Tritanomaly
16667496

Monochromacy



Original Color
16732030

Achromatopsia
9013641

Achromatomaly
11826309

CSS Examples

Text

The CSS property to change the color of the text to Decimal 16732030 is called "color". The color property can be set on classes, ids or directly on the HTML element.

This example shows how text in the color #FF4F7E looks like.

```
.text, #text, p{  
    color:#FF4F7E  
}
```

If you want to add a text shadow in that color use the text-shadow property, you can generate a text shadow directly with our [CSS Text Shadow Generator](#).

Here you see how black text with a 4 pixel #FF4F7E colored shadow looks like.

```
.shadow{ text-shadow: 4px 4px 2px #FF4F7E
}
```

Border

The CSS property to change the border of an element to Decimal 16732030 is called "border". The border property can be set on classes, ids or directly on the HTML element.

This example shows the color as border, it can be applied via the CSS property "border" or "border-color".

```
.border, #border, table{ border:4px solid
#FF4F7E }
```

If only the border color should be changed use the property `border-color`.

```
.border{ border-color:#FF4F7E }
```

If you want to add a box shadow in that color use:

Here you see how a box with a 4 pixel #FF4F7E colored shadow looks like.

```
.boxshadow{ -moz-box-shadow:4px 4px 4px  
4px #FF4F7E; -webkit-box-shadow:4px 4px  
4px 4px #FF4F7E; box-shadow:4px 4px 4px  
4px #FF4F7E }
```

Background

The CSS property to change the background color of an element to Decimal 16732030 is called "background". The background property can be set on classes, ids or directly on the HTML element.

```
.background, #background, body{  
background:#FF4F7E }
```

If only the background color should be changed can be used:

```
.background{ background-color:#FF4F7E }
```

This example shows the color as background, it is applied via the CSS property "background".

To optimize and compress your CSS code, you can use our [online CSS compressor and optimizer](#) based on csstidy. If you want to create a linear or radial gradient as background or border, check our [CSS Gradient Generator](#).

Hey! You found this booklet interesting? Support Converting Colors with the new Membership Option!

The pro membership hides all ads, plus gives you double the colors in the color bucket, and more awesome pro features!

[Learn more, Memberships starting at \\$2.50/m!](#)

**Follow me
on Twitter!**

@ConvertingColor