

Converting Colors

Decimal(16732805)

Have a look what the booklet for
Decimal(16732805) contains.

Decimal(16732805)	3
<i>Conversions</i>	4
<i>Details</i>	6
<i>Harmonies</i>	11
<i>Previews</i>	23
<i>Color Blindness Simulation</i>	26
<i>CSS Examples</i>	29

Color

Decimal(16732805)

Conversions

Conversions Part 1

Format	Color
Hex	FF5285
RGB	255, 82, 133
RGB Percent	100%, 32%, 52%
CMY	0.0000, 0.6784, 0.4784
CMYK	0.00, 0.68, 0.48, 0.00
HSL	342°, 100%, 66%
HSV	342°, 68%, 100%
XYZ	48.4909, 28.9880, 25.2298
YIQ	139.5410, 86.7370, 52.5370

Conversions

Conversions Part 2

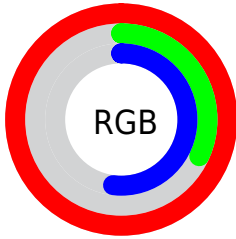
Format	Color
R _Y B	255, 82, 133
Decimal	16732805
CIE Lab	60.77, 68.62, 9.52
CIE LCh	61, 69.273, 7.900
Yxy	28.9880, 0.4721, 0.2822
Android (android.graphics.Color)	4294922885 (0xFFFF5285)
YUV	139.5410, -3.2247, 101.2575
Hunter-Lab	53.8405, 66.5432, 9.9050

Details

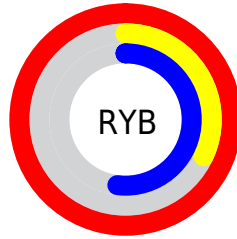
The Decimal color **16732805** is a light color, and the websafe version is hex **FF6699**. The color can be described as light muted rose. A complement of this color would be **5439436**, and the grayscale version is **9211020**.

A 20% lighter version of the original color is **16747962**, and **12648532** is the 20% darker color. If you saturate the color by 10%, you get **16726387**, and if you desaturate by 10%, it is **16739223**.

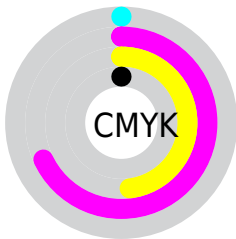
Distribution



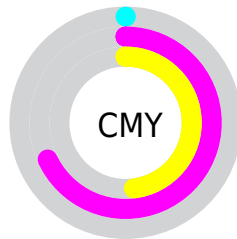
- Red (100%)
- Green (32%)
- Blue (52%)



- Red (100%)
- Yellow (32%)
- Blue (52%)



- Cyan (0%)
- Magenta (68%)
- Yellow (48%)
- Black (0%)



- Cyan (0%)
- Magenta (68%)
- Yellow (48%)

Brightness & Saturation Gradients

These gradients show how the Decimal color 16732805 changes by changing the brightness by 10 percent. The first figure shows a shift by +10% for each color and the second figure -10%.

Similar to the brightness gradients but the following saturation gradients show a change of the Decimal color 16732805 by changing the saturation by 10% instead.

 16732805

 16732805

16777215

 14692716

 16747962

 12648532

 16755413

 10616893

 16763122

 8650792

 16770559

 6619156

 4849667

 2752513

 0

 16732805

 16732805

■ 16726387

■ 16739223

■ 16719713

■ 16745897

■ 16713295

■ 16752571

■ 16711755

■ 16758989

■ 16765663

■ 16772081

16777215

Harmonies

Analogous

The Analogous color harmony consists of three colors that are next to each other on the color wheel.



15228610



16732805



16147274

Triad

The Triadic color harmony groups three colors that are evenly spaced from another and form a triangle on the color wheel.



16732805



6267941



42495

Complementary

The Complementary color scheme is a pair of colors which are on the opposite of each other on the color wheel.



16732805



5439436

Split Complementary

Split-complementary colors differ from the complementary color scheme. The scheme consists of three colors, the original color and two neighbors of the complement color.



44509



16732805



44130

Square

The Square scheme is like the rectangle color scheme, but the four colors are evenly spaced on the color wheel.



16732805



10589440



44962



38399

Rectangle

The Rectangle color scheme consists of four colors that form a rectangle on the color wheel.



16732805



14775846



44962



43514

Sweetspot

The Sweet Spot groups the original color and five complimentary colors.



16732805



16764123



13325055



8413546



0



8421504

Same Dimension

The Same Dimension uses a secret algorithm to generate beautiful new colors.



16732805



16724077



16741714



8418167



12517432



4194323

Inverse Universe

The Inverse Universe completely reimagines the original color for something new.



16732805



16724077



5430527



8418167



12517432



4194323

Previews

White Background



This preview shows how the Decimal color 16732805 looks on a white background.

Color Contrast Check

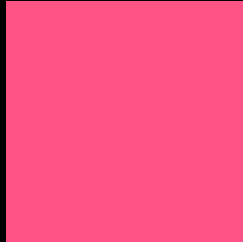
Large Text (above 18pt) WCAG AA ✓ Pass

Any Text WCAG AA × Fail

Large Text (above 18pt) WCAG AAA × Fail

Any Text WCAG AAA × Fail

Black Background



This preview shows how the Decimal color 16732805 looks on a black background.

Color Contrast Check

Large Text (above 18pt) WCAG AA ✓ Pass

Any Text WCAG AA ✓ Pass

Large Text (above 18pt) WCAG AAA ✓ Pass

Any Text WCAG AAA × Fail

If you want to check with other color combinations, try the [Color Contrast Checker](#).

Decimal 16732805 Background



This preview shows how black text looks on a background with the Decimal color 16732805.



This preview shows how white text looks on a background with the Decimal color 16732805.

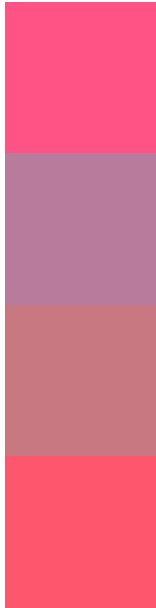
Color Blindness Simulation

Color vision deficiency is a very complex topic, and I could not describe the different causes any better than Wikipedia does, so if you want to learn more, you should check out their [article about color blindness](#).

Dichromacy



Trichromacy



Original Color
16732805

Protanomaly
12090267

Deuteranomaly
13138048

Tritanomaly
16668525

Monochromacy



Original Color
16732805

Achromatopsia
9211020

Achromatomaly
11958153

CSS Examples

Text

The CSS property to change the color of the text to Decimal 16732805 is called "color". The color property can be set on classes, ids or directly on the HTML element.

This example shows how text in the color #FF5285 looks like.

```
.text, #text, p{  
    color:#FF5285  
}
```

If you want to add a text shadow in that color use the text-shadow property, you can generate a text shadow directly with our [CSS Text Shadow Generator](#).

Here you see how black text with a 4 pixel #FF5285 colored shadow looks like.

```
.shadow{ text-shadow: 4px 4px 2px #FF5285
}
```

Border

The CSS property to change the border of an element to Decimal 16732805 is called "border". The border property can be set on classes, ids or directly on the HTML element.

This example shows the color as border, it can be applied via the CSS property "border" or "border-color".

```
.border, #border, table{ border:4px solid
#FF5285 }
```

If only the border color should be changed use the property `border-color`.

```
.border{ border-color:#FF5285 }
```

If you want to add a box shadow in that color use:

Here you see how a box with a 4 pixel #FF5285 colored shadow looks like.

```
.boxshadow{ -moz-box-shadow:4px 4px 4px  
4px #FF5285; -webkit-box-shadow:4px 4px  
4px 4px #FF5285; box-shadow:4px 4px 4px  
4px #FF5285 }
```

Background

The CSS property to change the background color of an element to Decimal 16732805 is called "background". The background property can be set on classes, ids or directly on the HTML element.

```
.background, #background, body{  
background:#FF5285 }
```

If only the background color should be changed can be used:

```
.background{ background-color:#FF5285 }
```

This example shows the color as background, it is applied via the CSS property "background".

To optimize and compress your CSS code, you can use our [online CSS compressor and optimizer](#) based on csstidy. If you want to create a linear or radial gradient as background or border, check our [CSS Gradient Generator](#).

Hey! You found this booklet interesting? Support Converting Colors with the new Membership Option!

The pro membership hides all ads, plus gives you double the colors in the color bucket, and more awesome pro features!

[Learn more, Memberships starting at \\$2.50/m!](#)

**Follow me
on Twitter!**

@ConvertingColor