

# Converting Colors

Decimal(16734344)

Have a look what the booklet for  
Decimal(16734344) contains.

<b>Decimal(16734344)</b> .....	3
<i><b>Conversions</b></i> .....	4
<i><b>Details</b></i> .....	6
<i><b>Harmonies</b></i> .....	11
<i><b>Previews</b></i> .....	23
<i><b>Color Blindness Simulation</b></i> .....	26
<i><b>CSS Examples</b></i> .....	29

# **Color**

**Decimal(16734344)**

# Conversions

## Conversions Part 1

Format	Color
Hex	FF5888
RGB	255, 88, 136
RGB Percent	100%, 35%, 53%
CMY	0.0000, 0.6549, 0.4667
CMYK	0.00, 0.65, 0.47, 0.00
HSL	343°, 100%, 67%
HSV	343°, 65%, 100%
XYZ	49.1737, 30.0170, 26.4947
YIQ	143.4050, 84.1240, 50.3320

# Conversions

## Conversions Part 2

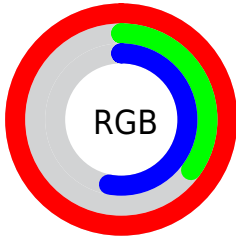
Format	Color
R <sub>Y</sub> B	255, 88, 136
Decimal	16734344
CIE Lab	61.67, 66.61, 9.05
CIE LCh	62, 67.224, 7.737
Yxy	30.0170, 0.4653, 0.2840
Android (android.graphics.Color)	4294924424 (0xFFFF5888)
YUV	143.4050, -3.6507, 97.8688
Hunter-Lab	54.7878, 64.3304, 9.6796

# Details

The Decimal color **16734344** is a light color, and the websafe version is hex **FF6699**. The color can be described as light muted rose. A complement of this color would be **5832655**, and the grayscale version is **9408399**.

A 20% lighter version of the original color is **16749245**, and **12651863** is the 20% darker color. If you saturate the color by 10%, you get **16727926**, and if you desaturate by 10%, it is **16741018**.

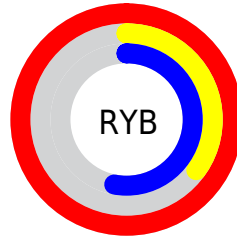
# Distribution



Red (100%)

Green (35%)

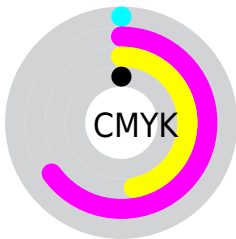
Blue (53%)



Red (100%)

Yellow (35%)

Blue (53%)

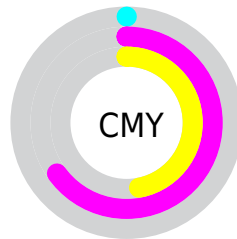


Cyan (0%)

Magenta (65%)

Yellow (47%)

Black (0%)



Cyan (0%)

Magenta (65%)

Yellow (47%)

# Brightness & Saturation Gradients

These gradients show how the Decimal color 16734344 changes by changing the brightness by 10 percent. The first figure shows a shift by +10% for each color and the second figure -10%.

Similar to the brightness gradients but the following saturation gradients show a change of the Decimal color 16734344 by changing the saturation by 10% instead.



 16734344  16734344

16777215  14694767

 16749245  12651863

 16756697  10616896

 16764405  8650794

 16771839  6684694

 4849667

 2818049

 0

 16734344  16734344

■ 16727926

■ 16741018

■ 16721252

■ 16747436

■ 16714833

■ 16754111

■ 16711753

■ 16760529

■ 16767203

■ 16773621

16777215

# Harmonies

## Analogous

The Analogous color harmony consists of three colors that are next to each other on the color wheel.



15229891



16734344



16148559

# Triad

The Triadic color harmony groups three colors that are evenly spaced from another and form a triangle on the color wheel.



16734344



6596140



43007

# Complementary

The Complementary color scheme is a pair of colors which are on the opposite of each other on the color wheel.



16734344



5832655

# Split Complementary

Split-complementary colors differ from the complementary color scheme. The scheme consists of three colors, the original color and two neighbors of the complement color.



45021



16734344



44645

# Square

The Square scheme is like the rectangle color scheme, but the four colors are evenly spaced on the color wheel.



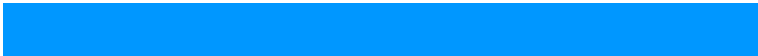
16734344



10786560



45475



38911

# Rectangle

The Rectangle color scheme consists of four colors that form a rectangle on the color wheel.



16734344



14842157



45475



44025



# Sweetspot

The Sweet Spot groups the original color and five complimentary colors.



16734344



16764123



13457663



8413546



0



8421504



# Same Dimension

The Same Dimension uses a secret algorithm to generate beautiful new colors.



16734344



16725615



16742744



8418166



12517431



4194322



# Inverse Universe

The Inverse Universe completely reimagines the original color for something new.



16734344



16725615



5824255



8418166



12517431



4194322



# Previews

## White Background



This preview shows how the Decimal color 16734344 looks on a white background.

## Color Contrast Check

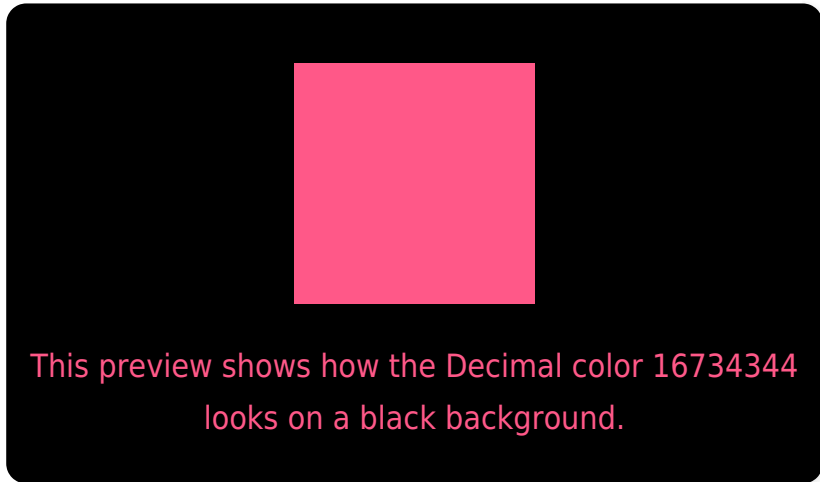
Large Text (above 18pt) WCAG AA ✓ Pass

Any Text WCAG AA × Fail

Large Text (above 18pt) WCAG AAA × Fail

Any Text WCAG AAA × Fail

# Black Background



## Color Contrast Check

Large Text (above 18pt) WCAG AA ✓ Pass

Any Text WCAG AA ✓ Pass

Large Text (above 18pt) WCAG AAA ✓ Pass

Any Text WCAG AAA ✓ Pass

If you want to check with other color combinations, try the [Color Contrast Checker](#).



## Decimal 16734344 Background



This preview shows how black text looks on a background with the Decimal color 16734344.



This preview shows how white text looks on a background with the Decimal color 16734344.

# Color Blindness Simulation

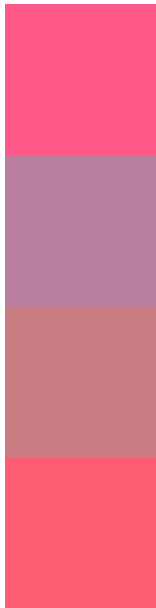
Color vision deficiency is a very complex topic, and I could not describe the different causes any better than Wikipedia does, so if you want to learn more, you should check out their [article about color blindness](#).

## Dichromacy





# Trichromacy



**Original Color**  
16734344

**Protanomaly**  
12222110

**Deuteranomaly**  
13270147

**Tritanomaly**  
16669810

# Monochromacy



**Original Color**  
16734344

**Achromatopsia**  
9408399

**Achromatomaly**  
12090252

# CSS Examples

## Text

The CSS property to change the color of the text to Decimal 16734344 is called "color". The color property can be set on classes, ids or directly on the HTML element.

This example shows how text in the color #FF5888 looks like.

```
.text, #text, p{  
    color:#FF5888  
}
```

If you want to add a text shadow in that color use the text-shadow property, you can generate a text shadow directly with our [CSS Text Shadow Generator](#).

Here you see how black text with a 4 pixel #FF5888 colored shadow looks like.

```
.shadow{ text-shadow: 4px 4px 2px #FF5888
}
```

## Border

The CSS property to change the border of an element to Decimal 16734344 is called "border". The border property can be set on classes, ids or directly on the HTML element.

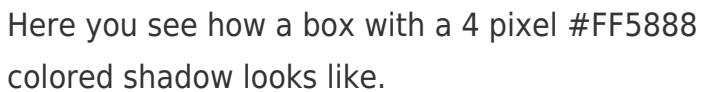
This example shows the color as border, it can be applied via the CSS property "border" or "border-color".

```
.border, #border, table{ border:4px solid
#FF5888 }
```

If only the border color should be changed use the property `border-color`.

```
.border{ border-color:#FF5888 }
```

If you want to add a box shadow in that color use:



Here you see how a box with a 4 pixel #FF5888 colored shadow looks like.

```
.boxshadow{ -moz-box-shadow:4px 4px 4px  
4px #FF5888; -webkit-box-shadow:4px 4px  
4px 4px #FF5888; box-shadow:4px 4px 4px  
4px #FF5888 }
```

# Background

The CSS property to change the background color of an element to Decimal 16734344 is called "background". The background property can be set on classes, ids or directly on the HTML element.

```
.background, #background, body{  
background:#FF5888 }
```

If only the background color should be changed can be used:

```
.background{ background-color:#FF5888 }
```

This example shows the color as background, it is applied via the CSS property "background".

To optimize and compress your CSS code, you can use our [online CSS compressor and optimizer](#) based on csstidy. If you want to create a linear or radial gradient as background or border, check our [CSS Gradient Generator](#).



Hey! You found this booklet interesting? Support Converting Colors with the new Membership Option!

The pro membership hides all ads, plus gives you double the colors in the color bucket, and more awesome pro features!

**[Learn more, Memberships starting at \\$2.50/m!](#)**

**Follow me  
on Twitter!**

@ConvertingColor