

# Converting Colors

Decimal(16735119)

Have a look what the booklet for  
Decimal(16735119) contains.

<b>Decimal(16735119)</b> .....	3
<i><b>Conversions</b></i> .....	4
<i><b>Details</b></i> .....	6
<i><b>Harmonies</b></i> .....	11
<i><b>Previews</b></i> .....	23
<i><b>Color Blindness Simulation</b></i> .....	26
<i><b>CSS Examples</b></i> .....	29

# **Color**

**Decimal(16735119)**

# Conversions

## Conversions Part 1

Format	Color
Hex	FF5B8F
RGB	255, 91, 143
RGB Percent	100%, 36%, 56%
CMY	0.0000, 0.6431, 0.4392
CMYK	0.00, 0.64, 0.44, 0.00
HSL	341°, 100%, 68%
HSV	341°, 64%, 100%
XYZ	49.9390, 30.7253, 29.2851
YIQ	145.9640, 81.0520, 50.9400

# Conversions

## Conversions Part 2

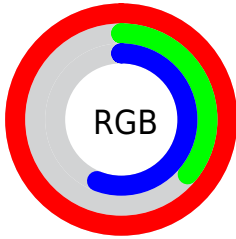
<b>Format</b>	<b>Color</b>
R <sub>Y</sub> B	255, 91, 143
Decimal	16735119
CIE Lab	62.28, 66.07, 5.86
CIE LCh	62, 66.330, 5.066
Yxy	30.7253, 0.4542, 0.2794
Android (android.graphics.Color)	4294925199 (0xFFFF5B8F)
YUV	145.9640, -1.4613, 95.6246
Hunter-Lab	55.4304, 63.8129, 7.4771

# Details

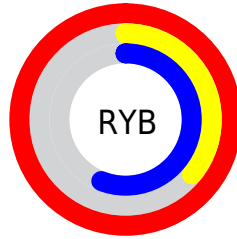
The Decimal color **16735119** is a light color, and the websafe version is hex **FF6699**. The color can be described as light muted rose. A complement of this color would be **6029259**, and the grayscale version is **9605778**.

A 20% lighter version of the original color is **16750021**, and **12653917** is the 20% darker color. If you saturate the color by 10%, you get **16728702**, and if you desaturate by 10%, it is **16741792**.

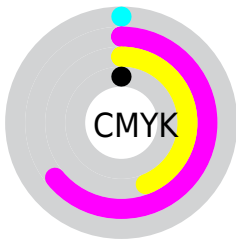
# Distribution



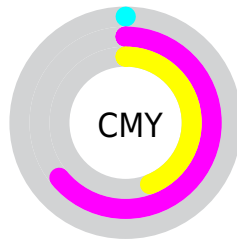
- Red (100%)
- Green (36%)
- Blue (56%)



- Red (100%)
- Yellow (36%)
- Blue (56%)



- Cyan (0%)
- Magenta (64%)
- Yellow (44%)
- Black (0%)



- Cyan (0%)
- Magenta (64%)
- Yellow (44%)

# Brightness & Saturation Gradients

These gradients show how the Decimal color 16735119 changes by changing the brightness by 10 percent. The first figure shows a shift by +10% for each color and the second figure -10%.

Similar to the brightness gradients but the following saturation gradients show a change of the Decimal color 16735119 by changing the saturation by 10% instead.



 16735119

 16735119

16777215

 14695542

 16750021

 12653917

 16757472

 10682438

 16764925

 8716336

 16772607

 6750235

 4915203

 2949121

 0

 16735119

 16735119

■ 16728702

■ 16741792

■ 16722028

■ 16748210

■ 16715611

■ 16754883

■ 16711761

■ 16761301

■ 16767974

■ 16774391

16777215

# Harmonies

## Analogous

The Analogous color harmony consists of three colors that are next to each other on the color wheel.



15034569



16735119



16345174

# Triad

The Triadic color harmony groups three colors that are evenly spaced from another and form a triangle on the color wheel.



16735119



7185963



43775

# Complementary

The Complementary color scheme is a pair of colors which are on the opposite of each other on the color wheel.



16735119



6029259

# Split Complementary

Split-complementary colors differ from the complementary color scheme. The scheme consists of three colors, the original color and two neighbors of the complement color.



45529



16735119



44898

# Square

The Square scheme is like the rectangle color scheme, but the four colors are evenly spaced on the color wheel.



16735119



11179776



45727



39679

# Rectangle

The Rectangle color scheme consists of four colors that form a rectangle on the color wheel.



16735119



15169845



45727



44534



# Sweetspot

The Sweet Spot groups the original color and five complimentary colors.



16735119



16764894



13130751



8413803



0



8421504



# Same Dimension

The Same Dimension uses a secret algorithm to generate beautiful new colors.



16735119



16726905



16741979



8418167



12517437



4194324



# Inverse Universe

The Inverse Universe completely reimagines the original color for something new.



16735119



16726905



6022399



8418167



12517437



4194324



# Previews

## White Background



This preview shows how the Decimal color 16735119 looks on a white background.

## Color Contrast Check

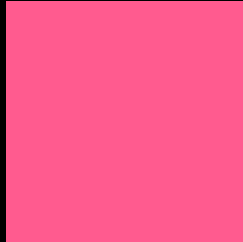
Large Text (above 18pt) WCAG AA × Fail

Any Text WCAG AA × Fail

Large Text (above 18pt) WCAG AAA × Fail

Any Text WCAG AAA × Fail

# Black Background



This preview shows how the Decimal color 16735119 looks on a black background.

## Color Contrast Check

Large Text (above 18pt) WCAG AA ✓ Pass

Any Text WCAG AA ✓ Pass

Large Text (above 18pt) WCAG AAA ✓ Pass

Any Text WCAG AAA ✓ Pass

If you want to check with other color combinations, try the [Color Contrast Checker](#).



## Decimal 16735119 Background



This preview shows how black text looks on a background with the Decimal color 16735119.




This preview shows how white text looks on a background with the Decimal color 16735119.

# Color Blindness Simulation

Color vision deficiency is a very complex topic, and I could not describe the different causes any better than Wikipedia does, so if you want to learn more, you should check out their [article about color blindness](#).

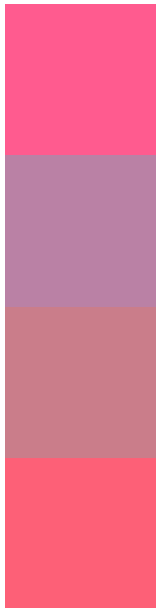
## Dichromacy





**Tritanopia**  
16540521

# Trichromacy



**Original Color**  
16735119

**Protanomaly**  
12222885

**Deuteranomaly**  
13270410

**Tritanomaly**  
16605303

# Monochromacy



**Original Color**  
16735119

**Achromatopsia**  
9605778

**Achromatomaly**  
12222097

# CSS Examples

## Text

The CSS property to change the color of the text to Decimal 16735119 is called "color". The color property can be set on classes, ids or directly on the HTML element.

This example shows how text in the color #FF5B8F looks like.

```
.text, #text, p{  
  color:#FF5B8F  
}
```

If you want to add a text shadow in that color use the text-shadow property, you can generate a text shadow directly with our [CSS Text Shadow Generator](#).

Here you see how black text with a 4 pixel #FF5B8F colored shadow looks like.

```
.shadow{ text-shadow: 4px 4px 2px #FF5B8F
}
```

## Border

The CSS property to change the border of an element to Decimal 16735119 is called "border". The border property can be set on classes, ids or directly on the HTML element.

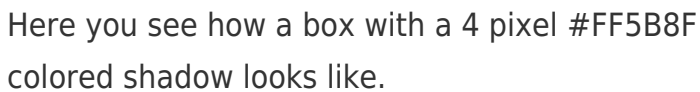
This example shows the color as border, it can be applied via the CSS property "border" or "border-color".

```
.border, #border, table{ border:4px solid
#FF5B8F }
```

If only the border color should be changed use the property `border-color`.

```
.border{ border-color:#FF5B8F }
```

If you want to add a box shadow in that color use:



Here you see how a box with a 4 pixel `#FF5B8F` colored shadow looks like.

```
.boxshadow{ -moz-box-shadow:4px 4px 4px  
4px #FF5B8F; -webkit-box-shadow:4px 4px  
4px 4px #FF5B8F; box-shadow:4px 4px 4px  
4px #FF5B8F }
```

# Background

The CSS property to change the background color of an element to Decimal 16735119 is called "background". The background property can be set on classes, ids or directly on the HTML element.

```
.background, #background, body{  
background:#FF5B8F }
```

If only the background color should be changed can be used:

```
.background{ background-color:#FF5B8F }
```

This example shows the color as background, it is applied via the CSS property "background".

To optimize and compress your CSS code, you can use our [online CSS compressor and optimizer](#) based on csstidy. If you want to create a linear or radial gradient as background or border, check our [CSS Gradient Generator](#).



Hey! You found this booklet interesting? Support Converting Colors with the new Membership Option!

The pro membership hides all ads, plus gives you double the colors in the color bucket, and more awesome pro features!

**[Learn more, Memberships starting at \\$2.50/m!](#)**

**Follow me  
on Twitter!**

@ConvertingColor