

# Converting Colors

Decimal(16735126)

Have a look what the booklet for  
Decimal(16735126) contains.

<b>Decimal(16735126)</b> .....	3
<i><b>Conversions</b></i> .....	4
<i><b>Details</b></i> .....	6
<i><b>Harmonies</b></i> .....	11
<i><b>Previews</b></i> .....	23
<i><b>Color Blindness Simulation</b></i> .....	26
<i><b>CSS Examples</b></i> .....	29

# **Color**

**Decimal(16735126)**

# Conversions

## Conversions Part 1

Format	Color
Hex	FF5B96
RGB	255, 91, 150
RGB Percent	100%, 36%, 59%
CMY	0.0000, 0.6431, 0.4118
CMYK	0.00, 0.64, 0.41, 0.00
HSL	338°, 100%, 68%
HSV	338°, 64%, 100%
XYZ	50.4861, 30.9442, 32.1661
YIQ	146.7620, 78.8050, 53.1170

# Conversions

## Conversions Part 2

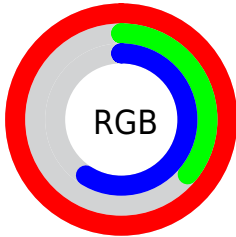
<b>Format</b>	<b>Color</b>
R <sub>Y</sub> B	255, 91, 150
Decimal	16735126
CIE Lab	62.46, 66.74, 2.08
CIE LCh	62, 66.772, 1.781
Yxy	30.9442, 0.4444, 0.2724
Android (android.graphics.Color)	4294925206 (0xFFFF5B96)
YUV	146.7620, 1.5963, 94.9247
Hunter-Lab	55.6275, 64.6540, 4.6554

# Details

The Decimal color **16735126** is a light color, and the websafe version is hex **FF6699**. The color can be described as light muted rose. A complement of this color would be **6029252**, and the grayscale version is **9671571**.

A 20% lighter version of the original color is **16750028**, and **12653667** is the 20% darker color. If you saturate the color by 10%, you get **16728710**, and if you desaturate by 10%, it is **16741798**.

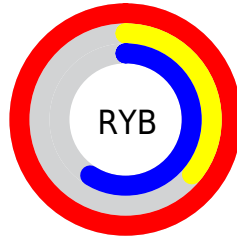
# Distribution



Red (100%)

Green (36%)

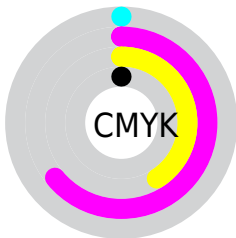
Blue (59%)



Red (100%)

Yellow (36%)

Blue (59%)

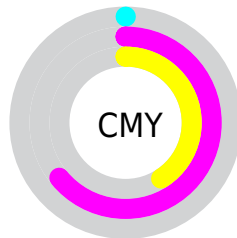


Cyan (0%)

Magenta (64%)

Yellow (41%)

Black (0%)



Cyan (0%)

Magenta (64%)

Yellow (41%)

# Brightness & Saturation Gradients

These gradients show how the Decimal color 16735126 changes by changing the brightness by 10 percent. The first figure shows a shift by +10% for each color and the second figure -10%.

Similar to the brightness gradients but the following saturation gradients show a change of the Decimal color 16735126 by changing the saturation by 10% instead.



 16735126

 16735126

16777215

 14695548

 16750028

 12653667

 16757480

 10682444

 16764927

 8716341

 16772607

 6815776

 4980744

 3014658

 0

 16735126

 16735126

■ 16728710

■ 16741798

■ 16722037

■ 16748215

■ 16715621

■ 16754887

■ 16711772

■ 16761303

■ 16767976

■ 16774392

16777215

# Harmonies

## Analogous

The Analogous color harmony consists of three colors that are next to each other on the color wheel.



14773200



16735126



16541276

# Triad

The Triadic color harmony groups three colors that are evenly spaced from another and form a triangle on the color wheel.



16735126



7709989



44031

# Complementary

The Complementary color scheme is a pair of colors which are on the opposite of each other on the color wheel.



16735126



6029252

# Split Complementary

Split-complementary colors differ from the complementary color scheme. The scheme consists of three colors, the original color and two neighbors of the complement color.



45780



16735126



44892

# Square

The Square scheme is like the rectangle color scheme, but the four colors are evenly spaced on the color wheel.



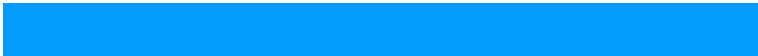
16735126



11638016



45721



40447

# Rectangle

The Rectangle color scheme consists of four colors that form a rectangle on the color wheel.



16735126



15431226



45721



44787



# Sweetspot

The Sweet Spot groups the original color and five complimentary colors.



16735126



16764896



12803071



8413805



0



8421504



# Same Dimension

The Same Dimension uses a secret algorithm to generate beautiful new colors.



16735126



16726913



16740699



8418167



12517445



4194327



# Inverse Universe

The Inverse Universe completely reimagines the original color for something new.



16735126



16726913



6023679



8418167



12517445



4194327



# Previews

## White Background



This preview shows how the Decimal color 16735126 looks on a white background.

## Color Contrast Check

Large Text (above 18pt) WCAG AA × Fail

Any Text WCAG AA × Fail

Large Text (above 18pt) WCAG AAA × Fail

Any Text WCAG AAA × Fail

# Black Background



This preview shows how the Decimal color 16735126 looks on a black background.

## Color Contrast Check

Large Text (above 18pt) WCAG AA ✓ Pass

Any Text WCAG AA ✓ Pass

Large Text (above 18pt) WCAG AAA ✓ Pass

Any Text WCAG AAA ✓ Pass

If you want to check with other color combinations, try the [Color Contrast Checker](#).



## Decimal 16735126 Background



This preview shows how black text looks on a background with the Decimal color 16735126.



This preview shows how white text looks on a background with the Decimal color 16735126.

# Color Blindness Simulation

Color vision deficiency is a very complex topic, and I could not describe the different causes any better than Wikipedia does, so if you want to learn more, you should check out their [article about color blindness](#).

## Dichromacy



**Original Color**  
16735126

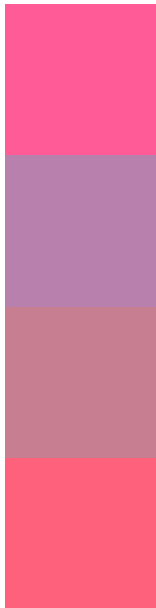
**Protanopia**  
9410234

**Deuteranopia**  
11113102



**Tritanopia**  
16540779

# Trichromacy



**Original Color**  
16735126

**Protanomaly**  
12091821

**Deuteranomaly**  
13139601

**Tritanomaly**  
16605563

# Monochromacy



**Original Color**  
16735126

**Achromatopsia**  
9671571

**Achromatomaly**  
12222356

# CSS Examples

## Text

The CSS property to change the color of the text to Decimal 16735126 is called "color". The color property can be set on classes, ids or directly on the HTML element.

This example shows how text in the color #FF5B96 looks like.

```
.text, #text, p{  
    color:#FF5B96  
}
```

If you want to add a text shadow in that color use the text-shadow property, you can generate a text shadow directly with our [CSS Text Shadow Generator](#).

Here you see how black text with a 4 pixel #FF5B96 colored shadow looks like.

```
.shadow{ text-shadow: 4px 4px 2px #FF5B96
}
```

## Border

The CSS property to change the border of an element to Decimal 16735126 is called "border". The border property can be set on classes, ids or directly on the HTML element.

This example shows the color as border, it can be applied via the CSS property "border" or "border-color".

```
.border, #border, table{ border:4px solid
#FF5B96 }
```

If only the border color should be changed use the property `border-color`.

```
.border{ border-color:#FF5B96 }
```

If you want to add a box shadow in that color use:

Here you see how a box with a 4 pixel #FF5B96 colored shadow looks like.

```
.boxshadow{ -moz-box-shadow:4px 4px 4px  
4px #FF5B96; -webkit-box-shadow:4px 4px  
4px 4px #FF5B96; box-shadow:4px 4px 4px  
4px #FF5B96 }
```

# Background

The CSS property to change the background color of an element to Decimal 16735126 is called "background". The background property can be set on classes, ids or directly on the HTML element.

```
.background, #background, body{  
background:#FF5B96 }
```

If only the background color should be changed can be used:

```
.background{ background-color:#FF5B96 }
```

This example shows the color as background, it is applied via the CSS property "background".

To optimize and compress your CSS code, you can use our [online CSS compressor and optimizer](#) based on csstidy. If you want to create a linear or radial gradient as background or border, check our [CSS Gradient Generator](#).



Hey! You found this booklet interesting? Support Converting Colors with the new Membership Option!

The pro membership hides all ads, plus gives you double the colors in the color bucket, and more awesome pro features!

**[Learn more, Memberships starting at \\$2.50/m!](#)**

**Follow me  
on Twitter!**

@ConvertingColor