

Converting Colors

Decimal(16737159)

Have a look what the booklet for
Decimal(16737159) contains.

Decimal(16737159)	3
<i>Conversions</i>	4
<i>Details</i>	6
<i>Harmonies</i>	11
<i>Previews</i>	23
<i>Color Blindness Simulation</i>	26
<i>CSS Examples</i>	29

Color

Decimal(16737159)

Conversions

Conversions Part 1

Format	Color
Hex	FF6387
RGB	255, 99, 135
RGB Percent	100%, 39%, 53%
CMY	0.0000, 0.6118, 0.4706
CMYK	0.00, 0.61, 0.47, 0.00
HSL	346°, 100%, 69%
HSV	346°, 61%, 100%
XYZ	50.0750, 31.9330, 26.4461
YIQ	149.7480, 81.4200, 44.2680

Conversions

Conversions Part 2

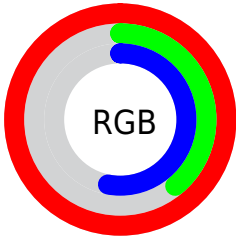
Format	Color
R _Y B	255, 99, 135
Decimal	16737159
CIE Lab	63.29, 62.07, 11.92
CIE LCh	63, 63.206, 10.868
Yxy	31.9330, 0.4617, 0.2944
Android (android.graphics.Color)	4294927239 (0xFFFF6387)
YUV	149.7480, -7.2708, 92.3060
Hunter-Lab	56.5092, 59.2845, 11.8090

Details

The Decimal color **16737159** is a light color, and the websafe version is hex **FF6699**. A complement of this color would be **6553563**, and the grayscale version is **9868950**.

A 20% lighter version of the original color is **16751804**, and **12658006** is the 20% darker color. If you saturate the color by 10%, you get **16730483**, and if you desaturate by 10%, it is **16743579**.

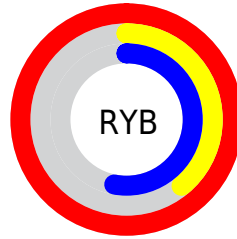
Distribution



Red (100%)

Green (39%)

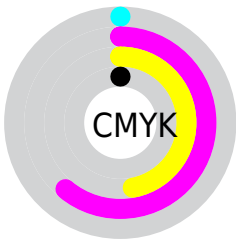
Blue (53%)



Red (100%)

Yellow (39%)

Blue (53%)

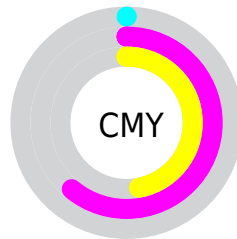


Cyan (0%)

Magenta (61%)

Yellow (47%)

Black (0%)



Cyan (0%)

Magenta (61%)

Yellow (47%)

Brightness & Saturation Gradients

These gradients show how the Decimal color 16737159 changes by changing the brightness by 10 percent. The first figure shows a shift by +10% for each color and the second figure -10%.

Similar to the brightness gradients but the following saturation gradients show a change of the Decimal color 16737159 by changing the saturation by 10% instead.

 16737159

 16737159

16777215

 14698094

 16751804

 12658006

 16759256

 10682431

 16766708

 8716329

 16774143

 6750229

 4915202

 2949121

 0

 16737159

 16737159

■ 16730483

■ 16743579

■ 16724064

■ 16750254

■ 16717388

■ 16756930

■ 16711739

■ 16763349

■ 16770025

■ 16776445

16777215

Harmonies

Analogous

The Analogous color harmony consists of three colors that are next to each other on the color wheel.



15493823



16737159



16020050

Triad

The Triadic color harmony groups three colors that are evenly spaced from another and form a triangle on the color wheel.



16737159



6662718



43519

Complementary

The Complementary color scheme is a pair of colors which are on the opposite of each other on the color wheel.



16737159



6553563

Split Complementary

Split-complementary colors differ from the complementary color scheme. The scheme consists of three colors, the original color and two neighbors of the complement color.



45794



16737159



45682

Square

The Square scheme is like the rectangle color scheme, but the four colors are evenly spaced on the color wheel.



16737159



10722585



46253



4823551

Rectangle

The Rectangle color scheme consists of four colors that form a rectangle on the color wheel.



16737159



14713140



46253



44539

Sweetspot

The Sweet Spot groups the original color and five complimentary colors.



16737159



16765404



14377983



8414058



0



8421504

Same Dimension

The Same Dimension uses a secret algorithm to generate beautiful new colors.



16737159



16729456



16747875



8418166



12517420



4194319

Inverse Universe

The Inverse Universe completely reimagines the original color for something new.



16737159



16729456



6542847



8418166



12517420



4194319

Previews

White Background



This preview shows how the Decimal color 16737159 looks on a white background.

Color Contrast Check

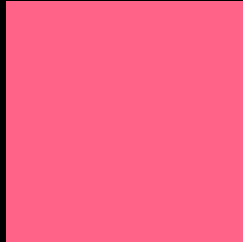
Large Text (above 18pt) WCAG AA × Fail

Any Text WCAG AA × Fail

Large Text (above 18pt) WCAG AAA × Fail

Any Text WCAG AAA × Fail

Black Background



This preview shows how the Decimal color 16737159 looks on a black background.

Color Contrast Check

Large Text (above 18pt) WCAG AA ✓ Pass

Any Text WCAG AA ✓ Pass

Large Text (above 18pt) WCAG AAA ✓ Pass

Any Text WCAG AAA ✓ Pass

If you want to check with other color combinations, try the [Color Contrast Checker](#).

Decimal 16737159 Background



This preview shows how black text looks on a background with the Decimal color 16737159.



This preview shows how white text looks on a background with the Decimal color 16737159.

Color Blindness Simulation

Color vision deficiency is a very complex topic, and I could not describe the different causes any better than Wikipedia does, so if you want to learn more, you should check out their [article about color blindness](#).

Dichromacy

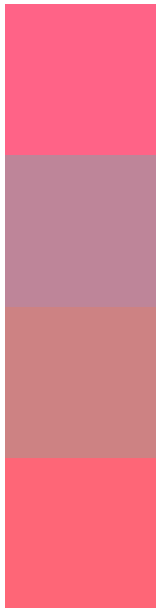


Original Color
16737159

Protanopia
10066340

Deuteranopia
11637888

Trichromacy



Original Color
16737159

Protanomaly
12486041

Deuteranomaly
13468291

Tritanomaly
16672375

Monochromacy



Original Color
16737159

Achromatopsia
9868950

Achromatomaly
12354449

CSS Examples

Text

The CSS property to change the color of the text to Decimal 16737159 is called "color". The color property can be set on classes, ids or directly on the HTML element.

This example shows how text in the color #FF6387 looks like.

```
.text, #text, p{  
    color:#FF6387  
}
```

If you want to add a text shadow in that color use the text-shadow property, you can generate a text shadow directly with our [CSS Text Shadow Generator](#).

Here you see how black text with a 4 pixel #FF6387 colored shadow looks like.

```
.shadow{ text-shadow: 4px 4px 2px #FF6387
}
```

Border

The CSS property to change the border of an element to Decimal 16737159 is called "border". The border property can be set on classes, ids or directly on the HTML element.

This example shows the color as border, it can be applied via the CSS property "border" or "border-color".

```
.border, #border, table{ border:4px solid
#FF6387 }
```

If only the border color should be changed use the property `border-color`.

```
.border{ border-color:#FF6387 }
```

If you want to add a box shadow in that color use:

Here you see how a box with a 4 pixel #FF6387 colored shadow looks like.

```
.boxshadow{ -moz-box-shadow:4px 4px 4px  
4px #FF6387; -webkit-box-shadow:4px 4px  
4px 4px #FF6387; box-shadow:4px 4px 4px  
4px #FF6387 }
```

Background

The CSS property to change the background color of an element to Decimal 16737159 is called "background". The background property can be set on classes, ids or directly on the HTML element.

```
.background, #background, body{  
background:#FF6387 }
```

If only the background color should be changed can be used:

```
.background{ background-color:#FF6387 }
```

This example shows the color as background, it is applied via the CSS property "background".

To optimize and compress your CSS code, you can use our [online CSS compressor and optimizer](#) based on csstidy. If you want to create a linear or radial gradient as background or border, check our [CSS Gradient Generator](#).

Hey! You found this booklet interesting? Support Converting Colors with the new Membership Option!

The pro membership hides all ads, plus gives you double the colors in the color bucket, and more awesome pro features!

[Learn more, Memberships starting at \\$2.50/m!](#)

**Follow me
on Twitter!**

@ConvertingColor