

Converting Colors

Decimal(16737926)

Have a look what the booklet for
Decimal(16737926) contains.

Decimal(16737926)	3
<i>Conversions</i>	4
<i>Details</i>	6
<i>Harmonies</i>	11
<i>Previews</i>	23
<i>Color Blindness Simulation</i>	26
<i>CSS Examples</i>	29

Color

Decimal(16737926)

Conversions

Conversions Part 1

Format	Color
Hex	FF6686
RGB	255, 102, 134
RGB Percent	100%, 40%, 53%
CMY	0.0000, 0.6000, 0.4745
CMYK	0.00, 0.60, 0.47, 0.00
HSL	347°, 100%, 70%
HSV	347°, 60%, 100%
XYZ	50.2944, 32.4840, 26.1735
YIQ	151.3950, 80.9160, 42.3880

Conversions

Conversions Part 2

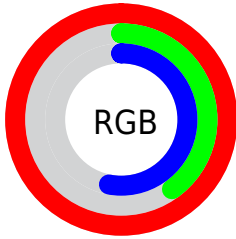
Format	Color
R_{YB}	255, 102, 134
Decimal	16737926
CIE _{Lab}	63.74, 60.71, 13.13
CIE _{LCh}	64, 62.111, 12.203
Yxy	32.4840, 0.4616, 0.2981
Android (android.graphics.Color)	4294928006 (0xFFFF6686)
YUV	151.3950, -8.5757, 90.8616
Hunter-Lab	56.9947, 57.7749, 12.6688

Details

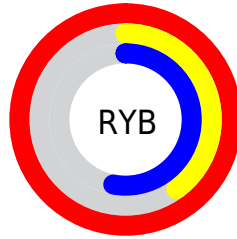
The Decimal color **16737926** is a light color, and the websafe version is hex **FF6699**. A complement of this color would be **6750175**, and the grayscale version is **9934743**.

A 20% lighter version of the original color is **16752571**, and **12659285** is the 20% darker color. If you saturate the color by 10%, you get **16731506**, and if you desaturate by 10%, it is **16744602**.

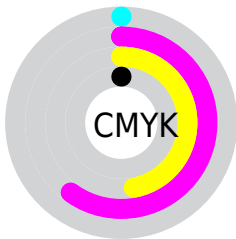
Distribution



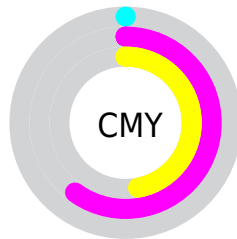
- Red (100%)
- Green (40%)
- Blue (53%)



- Red (100%)
- Yellow (40%)
- Blue (53%)



- Cyan (0%)
- Magenta (60%)
- Yellow (47%)
- Black (0%)



- Cyan (0%)
- Magenta (60%)
- Yellow (47%)

Brightness & Saturation Gradients

These gradients show how the Decimal color 16737926 changes by changing the brightness by 10 percent. The first figure shows a shift by +10% for each color and the second figure -10%.

Similar to the brightness gradients but the following saturation gradients show a change of the Decimal color 16737926 by changing the saturation by 10% instead.

 16737926

 16737926

16777215

 14698861

 16752571

 12659285

 16759767

 10682430

 16767219

 8716328

 16774911

 6750228

 4915202

 2949122

 0

 16737926

 16737926

■ 16731506

■ 16744602

■ 16724830

■ 16751022

■ 16718154

■ 16757699

■ 16711733

■ 16764119

■ 16770795

16777215

Harmonies

Analogous

The Analogous color harmony consists of three colors that are next to each other on the color wheel.



15625406



16737926



15955282

Triad

The Triadic color harmony groups three colors that are evenly spaced from another and form a triangle on the color wheel.



16737926



6597699



43775

Complementary

The Complementary color scheme is a pair of colors which are on the opposite of each other on the color wheel.



16737926



6750175

Split Complementary

Split-complementary colors differ from the complementary color scheme. The scheme consists of three colors, the original color and two neighbors of the complement color.



45796



16737926



45943

Square

The Square scheme is like the rectangle color scheme, but the four colors are evenly spaced on the color wheel.



16737926



10657568



46512



5675519

Rectangle

The Rectangle color scheme consists of four colors that form a rectangle on the color wheel.



16737926



14648374



46512



44540

Sweetspot

The Sweet Spot groups the original color and five complimentary colors.



16737926



16765403



14575359



8414057



0



8421504

Same Dimension

The Same Dimension uses a secret algorithm to generate beautiful new colors.



16737926



16729966



16748902



8418165



12517416



4194317

Inverse Universe

The Inverse Universe completely reimagines the original color for something new.



16737926



16729966



6739199



8418165



12517416



4194317

Previews

White Background



This preview shows how the Decimal color 16737926 looks on a white background.

Color Contrast Check

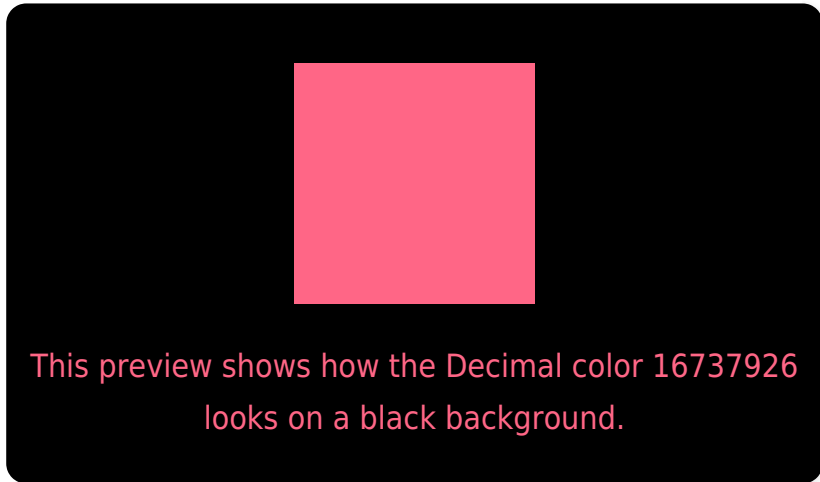
Large Text (above 18pt) WCAG AA × Fail

Any Text WCAG AA × Fail

Large Text (above 18pt) WCAG AAA × Fail

Any Text WCAG AAA × Fail

Black Background



Color Contrast Check

Large Text (above 18pt) WCAG AA ✓ Pass

Any Text WCAG AA ✓ Pass

Large Text (above 18pt) WCAG AAA ✓ Pass

Any Text WCAG AAA ✓ Pass

If you want to check with other color combinations, try the [Color Contrast Checker](#).

Decimal 16737926 Background



This preview shows how black text looks on a background with the Decimal color 16737926.




This preview shows how white text looks on a background with the Decimal color 16737926.

Color Blindness Simulation

Color vision deficiency is a very complex topic, and I could not describe the different causes any better than Wikipedia does, so if you want to learn more, you should check out their [article about color blindness](#).

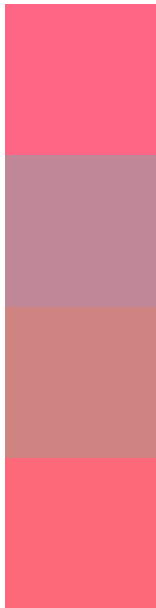
Dichromacy





Tritanopia
16673393

Trichromacy



Original Color
16737926

Protanomaly
12552088

Deuteranomaly
13599874

Tritanomaly
16673145

Monochromacy



Original Color
16737926

Achromatopsia
9934743

Achromatomaly
12420497

CSS Examples

Text

The CSS property to change the color of the text to Decimal 16737926 is called "color". The color property can be set on classes, ids or directly on the HTML element.

This example shows how text in the color #FF6686 looks like.

```
.text, #text, p{  
  color:#FF6686  
}
```

If you want to add a text shadow in that color use the text-shadow property, you can generate a text shadow directly with our [CSS Text Shadow Generator](#).

Here you see how black text with a 4 pixel #FF6686 colored shadow looks like.

```
.shadow{ text-shadow: 4px 4px 2px #FF6686
}
```

Border

The CSS property to change the border of an element to Decimal 16737926 is called "border". The border property can be set on classes, ids or directly on the HTML element.

This example shows the color as border, it can be applied via the CSS property "border" or "border-color".

```
.border, #border, table{ border:4px solid
#FF6686 }
```

If only the border color should be changed use the property `border-color`.

```
.border{ border-color:#FF6686 }
```

If you want to add a box shadow in that color use:

Here you see how a box with a 4 pixel #FF6686 colored shadow looks like.

```
.boxshadow{ -moz-box-shadow:4px 4px 4px  
4px #FF6686; -webkit-box-shadow:4px 4px  
4px 4px #FF6686; box-shadow:4px 4px 4px  
4px #FF6686 }
```

Background

The CSS property to change the background color of an element to Decimal 16737926 is called "background". The background property can be set on classes, ids or directly on the HTML element.

```
.background, #background, body{  
background:#FF6686 }
```

If only the background color should be changed can be used:

```
.background{ background-color:#FF6686 }
```

This example shows the color as background, it is applied via the CSS property "background".

To optimize and compress your CSS code, you can use our [online CSS compressor and optimizer](#) based on csstidy. If you want to create a linear or radial gradient as background or border, check our [CSS Gradient Generator](#).

Hey! You found this booklet interesting? Support Converting Colors with the new Membership Option!

The pro membership hides all ads, plus gives you double the colors in the color bucket, and more awesome pro features!

[Learn more, Memberships starting at \\$2.50/m!](#)

**Follow me
on Twitter!**

@ConvertingColor