

Converting Colors

Decimal(16739460)

Have a look what the booklet for
Decimal(16739460) contains.

| | |
|--|----|
| Decimal(16739460) | 3 |
| <i>Conversions</i> | 4 |
| <i>Details</i> | 6 |
| <i>Harmonies</i> | 11 |
| <i>Previews</i> | 23 |
| <i>Color Blindness Simulation</i> | 26 |
| <i>CSS Examples</i> | 29 |

Color

Decimal(16739460)

Conversions

Conversions Part 1

| Format | Color |
|-------------|----------------------------|
| Hex | FF6C84 |
| RGB | 255, 108, 132 |
| RGB Percent | 100%, 42%, 52% |
| CMY | 0.0000, 0.5765, 0.4824 |
| CMYK | 0.00, 0.58, 0.48, 0.00 |
| HSL | 350°, 100%, 71% |
| HSV | 350°, 58%, 100% |
| XYZ | 50.7674, 33.6511, 25.6494 |
| YIQ | 154.6890, 79.9080, 38.6280 |

Conversions

Conversions Part 2

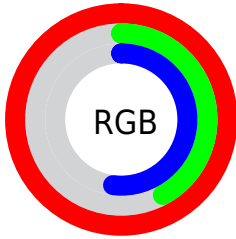
| Format | Color |
|-------------------------------------|--------------------------------|
| R _Y B | 255, 108, 132 |
| Decimal | 16739460 |
| CIE Lab | 64.68, 57.90, 15.59 |
| CIE LCh | 65, 59.966, 15.071 |
| Yxy | 33.6511, 0.4612, 0.3057 |
| Android (android.graphics.Color) | 4294929540 (0xFFFF6C84) |
| YUV | 154.6890, -11.1857, 87.9727 |
| Hunter-Lab | 58.0095, 54.6987, 14.3912 |

Details

The Decimal color **16739460** is a light color, and the websafe version is hex **FF6699**. A complement of this color would be **7143399**, and the grayscale version is **10197915**.

A 20% lighter version of the original color is **16753849**, and **12661331** is the 20% darker color. If you saturate the color by 10%, you get **16733039**, and if you desaturate by 10%, it is **16746137**.

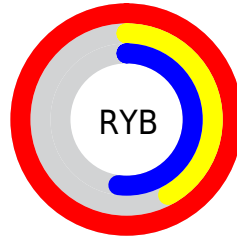
Distribution



Red (100%)

Green (42%)

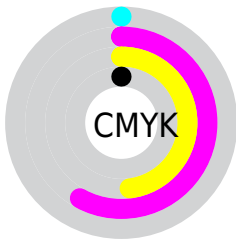
Blue (52%)



Red (100%)

Yellow (42%)

Blue (52%)

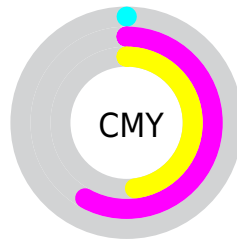


Cyan (0%)

Magenta (58%)

Yellow (48%)

Black (0%)



Cyan (0%)

Magenta (58%)

Yellow (48%)

Brightness & Saturation Gradients

These gradients show how the Decimal color 16739460 changes by changing the brightness by 10 percent. The first figure shows a shift by +10% for each color and the second figure -10%.

Similar to the brightness gradients but the following saturation gradients show a change of the Decimal color 16739460 by changing the saturation by 10% instead.

 16739460

 16739460

16777215

 14700651

 16753849

 12661331

 16761300

 10684988

 16768753

 8716327

 16776191

 6815763

 4915201

 3014658

 0

 16739460

 16739460

■ 16733039

■ 16746137

■ 16726361

■ 16752559

■ 16719940

■ 16759236

■ 16713263

■ 16765657

■ 16711722

■ 16772335

16777215

Harmonies

Analogous

The Analogous color harmony consists of three colors that are next to each other on the color wheel.



15822778



16739460



15891283

Triad

The Triadic color harmony groups three colors that are evenly spaced from another and form a triangle on the color wheel.



16739460



6467405



43775

Complementary

The Complementary color scheme is a pair of colors which are on the opposite of each other on the color wheel.



16739460



7143399

Split Complementary

Split-complementary colors differ from the complementary color scheme. The scheme consists of three colors, the original color and two neighbors of the complement color.



46312



16739460



46463

Square

The Square scheme is like the rectangle color scheme, but the four colors are evenly spaced on the color wheel.



16739460



10527531



47031



7052031

Rectangle

The Rectangle color scheme consists of four colors that form a rectangle on the color wheel.



16739460



14518841



47031



44798

Sweetspot

The Sweet Spot groups the original color and five complimentary colors.



16739460



16766171



15166719



8414826



0



8421504

Same Dimension

The Same Dimension uses a secret algorithm to generate beautiful new colors.



16739460



16732012



16751980



8418165



12517407



4194314

Inverse Universe

The Inverse Universe completely reimagines the original color for something new.



16739460



16732012



7130879



8418165



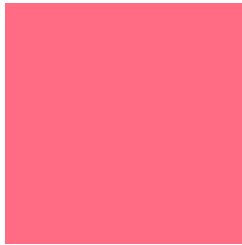
12517407



4194314

Previews

White Background



This preview shows how the Decimal color 16739460 looks on a white background.

Color Contrast Check

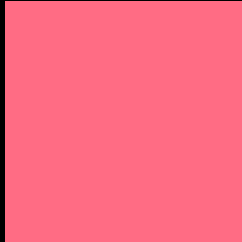
Large Text (above 18pt) WCAG AA × Fail

Any Text WCAG AA × Fail

Large Text (above 18pt) WCAG AAA × Fail

Any Text WCAG AAA × Fail

Black Background



This preview shows how the Decimal color 16739460 looks on a black background.

Color Contrast Check

Large Text (above 18pt) WCAG AA ✓ Pass

Any Text WCAG AA ✓ Pass

Large Text (above 18pt) WCAG AAA ✓ Pass

Any Text WCAG AAA ✓ Pass

If you want to check with other color combinations, try the [Color Contrast Checker](#).

Decimal 16739460 Background



This preview shows how black text looks on a background with the Decimal color 16739460.

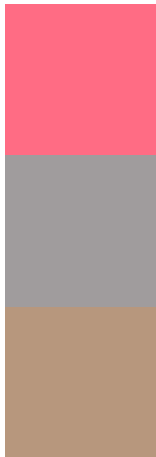


This preview shows how white text looks on a background with the Decimal color 16739460.

Color Blindness Simulation

Color vision deficiency is a very complex topic, and I could not describe the different causes any better than Wikipedia does, so if you want to learn more, you should check out their [article about color blindness](#).

Dichromacy



Original Color
16739460

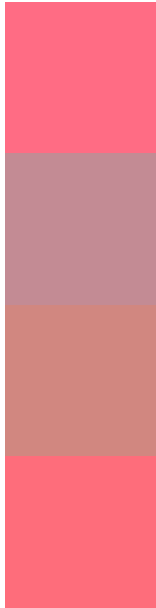
Protanopia
10525853

Deuteranopia
12031869



Tritanopia
16674422

Trichromacy



Original Color
16739460

Protanomaly
12815252

Deuteranomaly
13731712

Tritanomaly
16674171

Monochromacy



Original Color
16739460

Achromatopsia
10197915

Achromatomaly
12552851

CSS Examples

Text

The CSS property to change the color of the text to Decimal 16739460 is called "color". The color property can be set on classes, ids or directly on the HTML element.

This example shows how text in the color #FF6C84 looks like.

```
.text, #text, p{  
    color:#FF6C84  
}
```

If you want to add a text shadow in that color use the text-shadow property, you can generate a text shadow directly with our [CSS Text Shadow Generator](#).

Here you see how black text with a 4 pixel #FF6C84 colored shadow looks like.

```
.shadow{ text-shadow: 4px 4px 2px #FF6C84
}
```

Border

The CSS property to change the border of an element to Decimal 16739460 is called "border". The border property can be set on classes, ids or directly on the HTML element.

This example shows the color as border, it can be applied via the CSS property "border" or "border-color".

```
.border, #border, table{ border:4px solid
#FF6C84 }
```

If only the border color should be changed use the property `border-color`.

```
.border{ border-color:#FF6C84 }
```

If you want to add a box shadow in that color use:

Here you see how a box with a 4 pixel #FF6C84 colored shadow looks like.

```
.boxshadow{ -moz-box-shadow:4px 4px 4px  
4px #FF6C84; -webkit-box-shadow:4px 4px  
4px 4px #FF6C84; box-shadow:4px 4px 4px  
4px #FF6C84 }
```

Background

The CSS property to change the background color of an element to Decimal 16739460 is called "background". The background property can be set on classes, ids or directly on the HTML element.

```
.background, #background, body{  
background:#FF6C84 }
```

If only the background color should be changed can be used:

```
.background{ background-color:#FF6C84 }
```

This example shows the color as background, it is applied via the CSS property "background".

To optimize and compress your CSS code, you can use our [online CSS compressor and optimizer](#) based on csstidy. If you want to create a linear or radial gradient as background or border, check our [CSS Gradient Generator](#).

Hey! You found this booklet interesting? Support Converting Colors with the new Membership Option!

The pro membership hides all ads, plus gives you double the colors in the color bucket, and more awesome pro features!

[Learn more, Memberships starting at \\$2.50/m!](#)

**Follow me
on Twitter!**

@ConvertingColor