

Converting Colors

Decimal(16741515)

Have a look what the booklet for
Decimal(16741515) contains.

Decimal(16741515)	3
<i>Conversions</i>	4
<i>Details</i>	6
<i>Harmonies</i>	11
<i>Previews</i>	23
<i>Color Blindness Simulation</i>	26
<i>CSS Examples</i>	29

Color

Decimal(16741515)

Conversions

Conversions Part 1

Format	Color
Hex	FF748B
RGB	255, 116, 139
RGB Percent	100%, 45%, 55%
CMY	0.0000, 0.5451, 0.4549
CMYK	0.00, 0.55, 0.45, 0.00
HSL	350°, 100%, 73%
HSV	350°, 55%, 100%
XYZ	52.1456, 35.6149, 28.5521
YIQ	160.1830, 75.4610, 36.6210

Conversions

Conversions Part 2

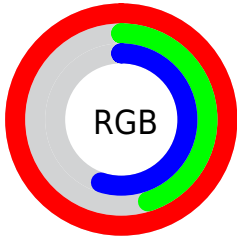
Format	Color
R_{YB}	255, 116, 139
Decimal	16741515
CIE Lab	66.22, 54.90, 13.75
CIE LCh	66, 56.600, 14.063
Yxy	35.6149, 0.4483, 0.3062
Android (android.graphics.Color)	4294931595 (0xFFFF748B)
YUV	160.1830, -10.4432, 83.1545
Hunter-Lab	59.6782, 51.5329, 13.4084

Details

The Decimal color **16741515** is a light color, and the websafe version is hex **FF6699**. A complement of this color would be **7667688**, and the grayscale version is **10526880**.

A 20% lighter version of the original color is **16755904**, and **12729433** is the 20% darker color. If you saturate the color by 10%, you get **16734838**, and if you desaturate by 10%, it is **16748192**.

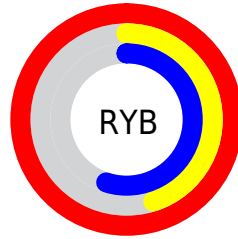
Distribution



Red (100%)

Green (45%)

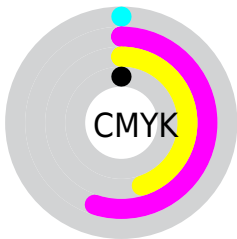
Blue (55%)



Red (100%)

Yellow (45%)

Blue (55%)

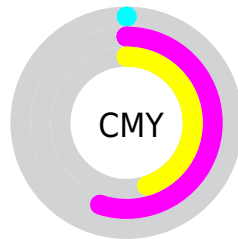


Cyan (0%)

Magenta (55%)

Yellow (45%)

Black (0%)



Cyan (0%)

Magenta (55%)

Yellow (45%)

Brightness & Saturation Gradients

These gradients show how the Decimal color 16741515 changes by changing the brightness by 10 percent. The first figure shows a shift by +10% for each color and the second figure -10%.

Similar to the brightness gradients but the following saturation gradients show a change of the Decimal color 16741515 by changing the saturation by 10% instead.

 16741515

 16741515

16777215

 14702706

 16755904

 12729433

 16763100

 10755138

 16770553

 8781868

 6881304

 5046272

 3211266

 0

 16741515

 16741515

■ 16734838

■ 16748192

■ 16728416

■ 16754614

■ 16721739

■ 16761291

■ 16715318

■ 16767712

■ 16711722

■ 16774133

16777215

Harmonies

Analogous

The Analogous color harmony consists of three colors that are next to each other on the color wheel.



15759550



16741515



15958364

Triad

The Triadic color harmony groups three colors that are evenly spaced from another and form a triangle on the color wheel.



16741515



7189076



44799

Complementary

The Complementary color scheme is a pair of colors which are on the opposite of each other on the color wheel.



16741515



7667688

Split Complementary

Split-complementary colors differ from the complementary color scheme. The scheme consists of three colors, the original color and two neighbors of the complement color.



47079



16741515



47235

Square

The Square scheme is like the rectangle color scheme, but the four colors are evenly spaced on the color wheel.



16741515



10921527



47800



7446271

Rectangle

The Rectangle color scheme consists of four colors that form a rectangle on the color wheel.



16741515



14716484



47800



45820

Sweetspot

The Sweet Spot groups the original color and five complimentary colors.



16741515



16766685



15234303



8415083



0



8421504

Same Dimension

The Same Dimension uses a secret algorithm to generate beautiful new colors.



16741515



16734581



16753268



8418165



12517408



4194315

Inverse Universe

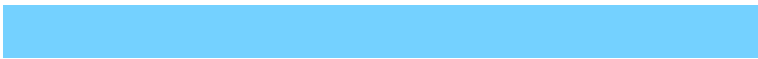
The Inverse Universe completely reimagines the original color for something new.



16741515



16734581



7655935



8418165



12517408



4194315

Previews

White Background



This preview shows how the Decimal color 16741515 looks on a white background.

Color Contrast Check

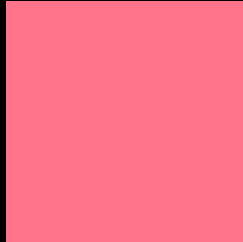
Large Text (above 18pt) WCAG AA × Fail

Any Text WCAG AA × Fail

Large Text (above 18pt) WCAG AAA × Fail

Any Text WCAG AAA × Fail

Black Background



This preview shows how the Decimal color 16741515 looks on a black background.

Color Contrast Check

Large Text (above 18pt) WCAG AA ✓ Pass

Any Text WCAG AA ✓ Pass

Large Text (above 18pt) WCAG AAA ✓ Pass

Any Text WCAG AAA ✓ Pass

If you want to check with other color combinations, try the [Color Contrast Checker](#).

Decimal 16741515 Background



This preview shows how black text looks on a background with the Decimal color 16741515.



This preview shows how white text looks on a background with the Decimal color 16741515.

Color Blindness Simulation

Color vision deficiency is a very complex topic, and I could not describe the different causes any better than Wikipedia does, so if you want to learn more, you should check out their [article about color blindness](#).

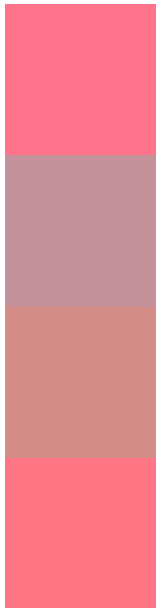
Dichromacy





Tritanopia
16676478

Trichromacy



Original Color
16741515

Protanomaly
12947866

Deuteranomaly
13929863

Tritanomaly
16676227

Monochromacy



Original Color
16741515

Achromatopsia
10526880

Achromatomaly
12816536

CSS Examples

Text

The CSS property to change the color of the text to Decimal 16741515 is called "color". The color property can be set on classes, ids or directly on the HTML element.

This example shows how text in the color #FF748B looks like.

```
.text, #text, p{  
    color:#FF748B  
}
```

If you want to add a text shadow in that color use the text-shadow property, you can generate a text shadow directly with our [CSS Text Shadow Generator](#).

Here you see how black text with a 4 pixel #FF748B colored shadow looks like.

```
.shadow{ text-shadow: 4px 4px 2px #FF748B
}
```

Border

The CSS property to change the border of an element to Decimal 16741515 is called "border". The border property can be set on classes, ids or directly on the HTML element.

This example shows the color as border, it can be applied via the CSS property "border" or "border-color".

```
.border, #border, table{ border:4px solid
#FF748B }
```

If only the border color should be changed use the property `border-color`.

```
.border{ border-color:#FF748B }
```

If you want to add a box shadow in that color use:

Here you see how a box with a 4 pixel #FF748B colored shadow looks like.

```
.boxshadow{ -moz-box-shadow:4px 4px 4px  
4px #FF748B; -webkit-box-shadow:4px 4px  
4px 4px #FF748B; box-shadow:4px 4px 4px  
4px #FF748B }
```

Background

The CSS property to change the background color of an element to Decimal 16741515 is called "background". The background property can be set on classes, ids or directly on the HTML element.

```
.background, #background, body{  
background:#FF748B }
```

If only the background color should be changed can be used:

```
.background{ background-color:#FF748B }
```

This example shows the color as background, it is applied via the CSS property "background".

To optimize and compress your CSS code, you can use our [online CSS compressor and optimizer](#) based on csstidy. If you want to create a linear or radial gradient as background or border, check our [CSS Gradient Generator](#).

Hey! You found this booklet interesting? Support Converting Colors with the new Membership Option!

The pro membership hides all ads, plus gives you double the colors in the color bucket, and more awesome pro features!

[Learn more, Memberships starting at \\$2.50/m!](#)

**Follow me
on Twitter!**

@ConvertingColor