

# Converting Colors

Decimal(16741740)

Have a look what the booklet for  
Decimal(16741740) contains.

<b>Decimal(16741740)</b> .....	3
<i><b>Conversions</b></i> .....	4
<i><b>Details</b></i> .....	6
<i><b>Harmonies</b></i> .....	11
<i><b>Previews</b></i> .....	23
<i><b>Color Blindness Simulation</b></i> .....	26
<i><b>CSS Examples</b></i> .....	29

# **Color**

**Decimal(16741740)**

# Conversions

## Conversions Part 1

Format	Color
Hex	FF756C
RGB	255, 117, 108
RGB Percent	100%, 46%, 42%
CMY	0.0000, 0.5412, 0.5765
CMYK	0.00, 0.54, 0.58, 0.00
HSL	4°, 100%, 71%
HSV	4°, 58%, 100%
XYZ	50.3081, 35.0653, 18.3041
YIQ	157.2360, 85.1370, 26.4570

# Conversions

## Conversions Part 2

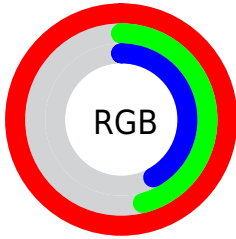
<b>Format</b>	<b>Color</b>
<b>R<sub>YB</sub></b>	255, 118, 108
Decimal	16741740
CIE <sub>Lab</sub>	65.80, 51.87, 30.65
CIE <sub>LCh</sub>	66, 60.251, 30.581
Yxy	35.0653, 0.4852, 0.3382
Android (android.graphics.Color)	4294931820 (0xFFFF756C)
YUV	157.2360, -24.2733, 85.7390
Hunter-Lab	59.2160, 48.0202, 23.1242

# Details

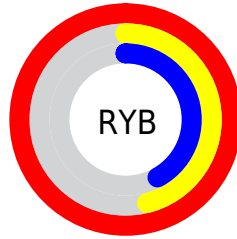
The Decimal color **16741740** is a light color, and the websafe version is hex **FF6666**. A complement of this color would be **7141119**, and the grayscale version is **10329501**.

A 20% lighter version of the original color is **16755872**, and **12664380** is the 20% darker color. If you saturate the color by 10%, you get **16735571**, and if you desaturate by 10%, it is **16747910**.

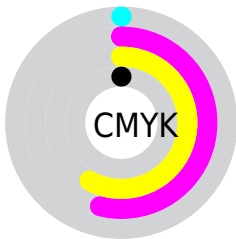
# Distribution



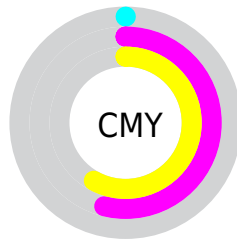
- Red (100%)
- Green (46%)
- Blue (42%)



- Red (100%)
- Yellow (46%)
- Blue (42%)



- Cyan (0%)
- Magenta (54%)
- Yellow (58%)
- Black (0%)



- Cyan (0%)
- Magenta (54%)
- Yellow (58%)

# Brightness & Saturation Gradients

These gradients show how the Decimal color 16741740 changes by changing the brightness by 10 percent. The first figure shows a shift by +10% for each color and the second figure -10%.

Similar to the brightness gradients but the following saturation gradients show a change of the Decimal color 16741740 by changing the saturation by 10% instead.



 16741740

 16741740

16777215

 14703188

 16755872

 12664380

 16763323

 10625062

 16770774

 8650770

 16777203

 6750208

 4784128

 2949122

 0

 16741740

 16741740

■ 16735571

■ 16747910

■ 16729401

■ 16754079

■ 16723232

■ 16760249

■ 16717062

■ 16766418

■ 16715776

■ 16772588

16777215

# Harmonies

## Analogous

The Analogous color harmony consists of three colors that are next to each other on the color wheel.



16740001



16741740



15108416

# Triad

The Triadic color harmony groups three colors that are evenly spaced from another and form a triangle on the color wheel.



16741740



3389032



42751

# Complementary

The Complementary color scheme is a pair of colors which are on the opposite of each other on the color wheel.



16741740



7141119

# Split Complementary

Split-complementary colors differ from the complementary color scheme. The scheme consists of three colors, the original color and two neighbors of the complement color.



46077



16741740



47775

# Square

The Square scheme is like the rectangle color scheme, but the four colors are evenly spaced on the color wheel.



16741740



8760636



47573



10654205

# Rectangle

The Rectangle color scheme consists of four colors that form a rectangle on the color wheel.



16741740



13342510



47573



44031



# Sweetspot

The Sweet Spot groups the original color and five complimentary colors.



16741740



16766676



16739576



8415334



0



8421504



# Same Dimension

The Same Dimension uses a secret algorithm to generate beautiful new colors.



16741740



16734799



16760172



8418419



12520448



4195328



# Inverse Universe

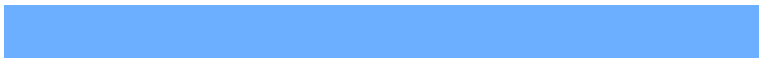
The Inverse Universe completely reimagines the original color for something new.



7141119



5240063



7122687



7569280



46271

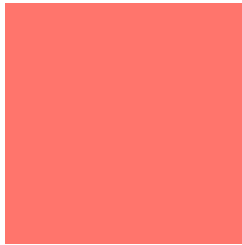


15424



# Previews

## White Background



This preview shows how the Decimal color 16741740 looks on a white background.

## Color Contrast Check

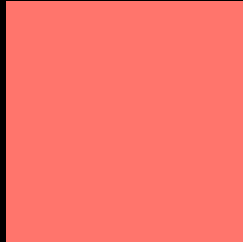
Large Text (above 18pt) WCAG AA × Fail

Any Text WCAG AA × Fail

Large Text (above 18pt) WCAG AAA × Fail

Any Text WCAG AAA × Fail

# Black Background



This preview shows how the Decimal color 16741740 looks on a black background.

## Color Contrast Check

Large Text (above 18pt) WCAG AA ✓ Pass

Any Text WCAG AA ✓ Pass

Large Text (above 18pt) WCAG AAA ✓ Pass

Any Text WCAG AAA ✓ Pass

If you want to check with other color combinations, try the [Color Contrast Checker](#).



## Decimal 16741740 Background



This preview shows how black text looks on a background with the Decimal color 16741740.

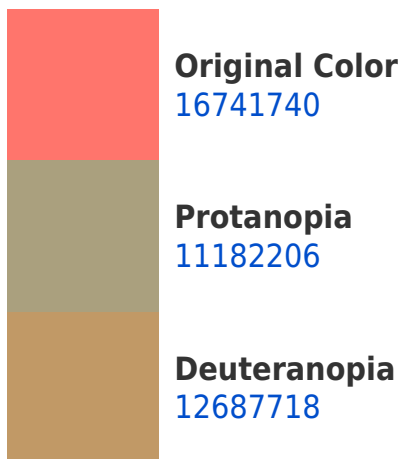


This preview shows how white text looks on a background with the Decimal color 16741740.

# Color Blindness Simulation

Color vision deficiency is a very complex topic, and I could not describe the different causes any better than Wikipedia does, so if you want to learn more, you should check out their [article about color blindness](#).

## Dichromacy



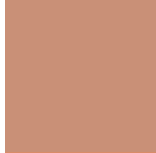


**Tritanopia**  
16741243

# Trichromacy



**Original Color**  
16741740



**Protanomaly**  
13209719



**Deuteranomaly**  
14191720

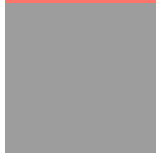


**Tritanomaly**  
16741494

# Monochromacy



**Original Color**  
16741740



**Achromatopsia**  
10329501



**Achromatomaly**  
12684939

# CSS Examples

## Text

The CSS property to change the color of the text to Decimal 16741740 is called "color". The color property can be set on classes, ids or directly on the HTML element.

This example shows how text in the color #FF756C looks like.

```
.text, #text, p{  
    color:#FF756C  
}
```

If you want to add a text shadow in that color use the text-shadow property, you can generate a text shadow directly with our [CSS Text Shadow Generator](#).

Here you see how black text with a 4 pixel #FF756C colored shadow looks like.

```
.shadow{ text-shadow: 4px 4px 2px #FF756C
}
```

## Border

The CSS property to change the border of an element to Decimal 16741740 is called "border". The border property can be set on classes, ids or directly on the HTML element.

This example shows the color as border, it can be applied via the CSS property "border" or "border-color".

```
.border, #border, table{ border:4px solid
#FF756C }
```

If only the border color should be changed use the property `border-color`.

```
.border{ border-color:#FF756C }
```

If you want to add a box shadow in that color use:

Here you see how a box with a 4 pixel #FF756C colored shadow looks like.

```
.boxshadow{ -moz-box-shadow:4px 4px 4px  
4px #FF756C; -webkit-box-shadow:4px 4px  
4px 4px #FF756C; box-shadow:4px 4px 4px  
4px #FF756C }
```

# Background

The CSS property to change the background color of an element to Decimal 16741740 is called "background". The background property can be set on classes, ids or directly on the HTML element.

```
.background, #background, body{  
background:#FF756C }
```

If only the background color should be changed can be used:

```
.background{ background-color:#FF756C }
```

This example shows the color as background, it is applied via the CSS property "background".

To optimize and compress your CSS code, you can use our [online CSS compressor and optimizer](#) based on csstidy. If you want to create a linear or radial gradient as background or border, check our [CSS Gradient Generator](#).



Hey! You found this booklet interesting? Support Converting Colors with the new Membership Option!

The pro membership hides all ads, plus gives you double the colors in the color bucket, and more awesome pro features!

**[Learn more, Memberships starting at \\$2.50/m!](#)**

**Follow me  
on Twitter!**

@ConvertingColor