

Converting Colors

Decimal(16742280)

Have a look what the booklet for
Decimal(16742280) contains.

Decimal(16742280)	3
<i>Conversions</i>	4
<i>Details</i>	6
<i>Harmonies</i>	11
<i>Previews</i>	23
<i>Color Blindness Simulation</i>	26
<i>CSS Examples</i>	29

Color

Decimal(16742280)

Conversions

Conversions Part 1

Format	Color
Hex	FF7788
RGB	255, 119, 136
RGB Percent	100%, 47%, 53%
CMY	0.0000, 0.5333, 0.4667
CMYK	0.00, 0.53, 0.47, 0.00
HSL	352°, 100%, 73%
HSV	352°, 53%, 100%
XYZ	52.2808, 36.2312, 27.5304
YIQ	161.6020, 75.5990, 34.1190

Conversions

Conversions Part 2

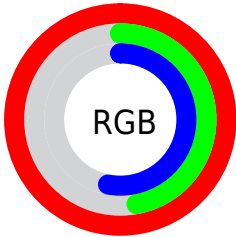
Format	Color
R_{YB}	255, 119, 136
Decimal	16742280
CIE _{Lab}	66.70, 53.22, 16.11
CIE _{LCh}	67, 55.609, 16.842
Yxy	36.2312, 0.4505, 0.3122
Android (android.graphics.Color)	4294932360 (0xFFFF7788)
YUV	161.6020, -12.6218, 81.9100
Hunter-Lab	60.1924, 49.7015, 15.0170

Details

The Decimal color **16742280** is a light color, and the websafe version is hex **FF6666**. A complement of this color would be **7864302**, and the grayscale version is **10658466**.

A 20% lighter version of the original color is **16756669**, and **12730454** is the 20% darker color. If you saturate the color by 10%, you get **16735858**, and if you desaturate by 10%, it is **16748958**.

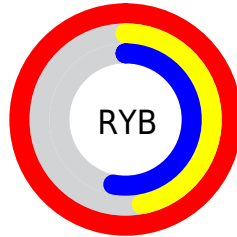
Distribution



Red (100%)

Green (47%)

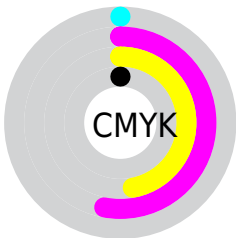
Blue (53%)



Red (100%)

Yellow (47%)

Blue (53%)

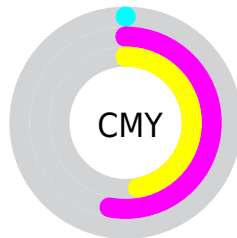


Cyan (0%)

Magenta (53%)

Yellow (47%)

Black (0%)



Cyan (0%)

Magenta (53%)

Yellow (47%)

Brightness & Saturation Gradients

These gradients show how the Decimal color 16742280 changes by changing the brightness by 10 percent. The first figure shows a shift by +10% for each color and the second figure -10%.

Similar to the brightness gradients but the following saturation gradients show a change of the Decimal color 16742280 by changing the saturation by 10% instead.

 16742280

 16742280

16777215

 14703727

 16756669

 12730454

 16763865

 10756671

 16771317

 8781866

 6881302

 5046272

 3211266

 0

 16742280

 16742280

■ 16735858

■ 16748958

■ 16729179

■ 16755381

■ 16722501

■ 16761803

■ 16716079

■ 16768481

■ 16711712

■ 16775160

16777215

Harmonies

Analogous

The Analogous color harmony consists of three colors that are next to each other on the color wheel.



15956410



16742280



15828315

Triad

The Triadic color harmony groups three colors that are evenly spaced from another and form a triangle on the color wheel.



16742280



6927451



44799

Complementary

The Complementary color scheme is a pair of colors which are on the opposite of each other on the color wheel.



16742280



7864302

Split Complementary

Split-complementary colors differ from the complementary color scheme. The scheme consists of three colors, the original color and two neighbors of the complement color.



47338



16742280



47754

Square

The Square scheme is like the rectangle color scheme, but the four colors are evenly spaced on the color wheel.



16742280



10725436



48062



8298239

Rectangle

The Rectangle color scheme consists of four colors that form a rectangle on the color wheel.



16742280



14520645



48062



45822

Sweetspot

The Sweet Spot groups the original color and five complimentary colors.



16742280



16766683



15562751



8415082



0



8421504

Same Dimension

The Same Dimension uses a secret algorithm to generate beautiful new colors.



16742280



16735344



16755063



8418164



12517400



4194312

Inverse Universe

The Inverse Universe completely reimagines the original color for something new.



16742280



16735344



7851519



8418164



12517400



4194312

Previews

White Background



This preview shows how the Decimal color 16742280 looks on a white background.

Color Contrast Check

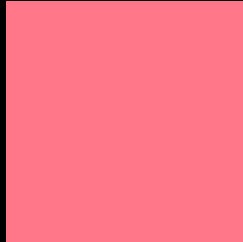
Large Text (above 18pt) WCAG AA × Fail

Any Text WCAG AA × Fail

Large Text (above 18pt) WCAG AAA × Fail

Any Text WCAG AAA × Fail

Black Background



This preview shows how the Decimal color 16742280 looks on a black background.

Color Contrast Check

Large Text (above 18pt) WCAG AA ✓ Pass

Any Text WCAG AA ✓ Pass

Large Text (above 18pt) WCAG AAA ✓ Pass

Any Text WCAG AAA ✓ Pass

If you want to check with other color combinations, try the [Color Contrast Checker](#).

Decimal 16742280 Background



This preview shows how black text looks on a background with the Decimal color 16742280.



This preview shows how white text looks on a background with the Decimal color 16742280.

Color Blindness Simulation

Color vision deficiency is a very complex topic, and I could not describe the different causes any better than Wikipedia does, so if you want to learn more, you should check out their [article about color blindness](#).


Dichromacy



Original Color
16742280

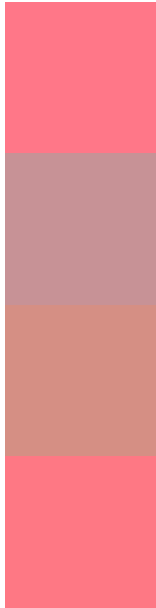
Protanopia
10986142

Deuteranopia
12426370



Tritanopia
16676993

Trichromacy



Original Color
16742280

Protanomaly
13079190

Deuteranomaly
13995908

Tritanomaly
16676996

Monochromacy



Original Color
16742280

Achromatopsia
10658466

Achromatomaly
12882585

CSS Examples

Text

The CSS property to change the color of the text to Decimal 16742280 is called "color". The color property can be set on classes, ids or directly on the HTML element.

This example shows how text in the color #FF7788 looks like.

```
.text, #text, p{  
    color:#FF7788  
}
```

If you want to add a text shadow in that color use the text-shadow property, you can generate a text shadow directly with our [CSS Text Shadow Generator](#).

Here you see how black text with a 4 pixel #FF7788 colored shadow looks like.

```
.shadow{ text-shadow: 4px 4px 2px #FF7788
}
```

Border

The CSS property to change the border of an element to Decimal 16742280 is called "border". The border property can be set on classes, ids or directly on the HTML element.

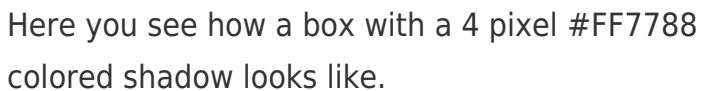
This example shows the color as border, it can be applied via the CSS property "border" or "border-color".

```
.border, #border, table{ border:4px solid
#FF7788 }
```

If only the border color should be changed use the property `border-color`.

```
.border{ border-color:#FF7788 }
```

If you want to add a box shadow in that color use:



Here you see how a box with a 4 pixel #FF7788 colored shadow looks like.

```
.boxshadow{ -moz-box-shadow:4px 4px 4px  
4px #FF7788; -webkit-box-shadow:4px 4px  
4px 4px #FF7788; box-shadow:4px 4px 4px  
4px #FF7788 }
```

Background

The CSS property to change the background color of an element to Decimal 16742280 is called "background". The background property can be set on classes, ids or directly on the HTML element.

```
.background, #background, body{  
background:#FF7788 }
```

If only the background color should be changed can be used:

```
.background{ background-color:#FF7788 }
```

This example shows the color as background, it is applied via the CSS property "background".

To optimize and compress your CSS code, you can use our [online CSS compressor and optimizer](#) based on csstidy. If you want to create a linear or radial gradient as background or border, check our [CSS Gradient Generator](#).

Hey! You found this booklet interesting? Support Converting Colors with the new Membership Option!

The pro membership hides all ads, plus gives you double the colors in the color bucket, and more awesome pro features!

[Learn more, Memberships starting at \\$2.50/m!](#)

**Follow me
on Twitter!**

@ConvertingColor