

Converting Colors

Decimal(16744871)

Have a look what the booklet for
Decimal(16744871) contains.

Decimal(16744871)	3
<i>Conversions</i>	4
<i>Details</i>	6
<i>Harmonies</i>	11
<i>Previews</i>	23
<i>Color Blindness Simulation</i>	26
<i>CSS Examples</i>	29

Color

Decimal(16744871)

Conversions

Conversions Part 1

Format	Color
Hex	FF81A7
RGB	255, 129, 167
RGB Percent	100%, 51%, 65%
CMY	0.0000, 0.4941, 0.3451
CMYK	0.00, 0.49, 0.35, 0.00
HSL	342°, 100%, 75%
HSV	342°, 49%, 100%
XYZ	56.0653, 39.7505, 41.2769
YIQ	171.0060, 62.8980, 38.5300

Conversions

Conversions Part 2

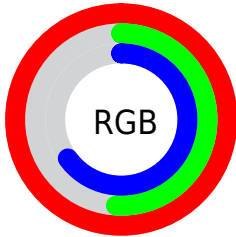
Format	Color
RYB	255, 129, 167
Decimal	16744871
CIELab	69.29, 51.69, 2.31
CIELCh	69, 51.745, 2.555
Yxy	39.7505, 0.4090, 0.2900
Android (android.graphics.Color)	4294934951 (0xFFFF81A7)
YUV	171.0060, -1.9750, 73.6627
Hunter-Lab	63.0480, 48.3967, 5.3171

Details

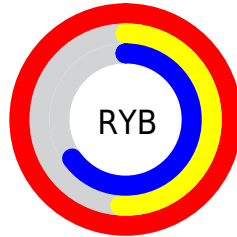
The Decimal color **16744871** is a light color, and the websafe version is hex **FF6699**. A complement of this color would be **8519641**, and the grayscale version is **11250603**.

A 20% lighter version of the original color is **16759262**, and **12798835** is the 20% darker color. If you saturate the color by 10%, you get **16738453**, and if you desaturate by 10%, it is **16751545**.

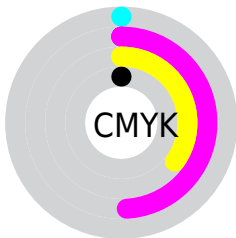
Distribution



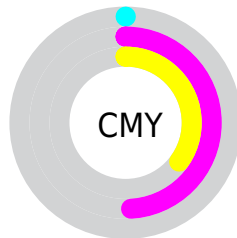
- Red (100%)
- Green (51%)
- Blue (65%)



- Red (100%)
- Yellow (51%)
- Blue (65%)



- Cyan (0%)
- Magenta (49%)
- Yellow (35%)
- Black (0%)



- Cyan (0%)
- Magenta (49%)
- Yellow (35%)

Brightness & Saturation Gradients

These gradients show how the Decimal color 16744871 changes by changing the brightness by 10 percent. The first figure shows a shift by +10% for each color and the second figure -10%.

Similar to the brightness gradients but the following saturation gradients show a change of the Decimal color 16744871 by changing the saturation by 10% instead.

 16744871

 16744871

16777215

 14771853

 16759262

 12798835

 16766459

 10891099

 16774143

 8981315

 7143469

 5308441

 3670018

 917504

 0

 16744871

 16744871

 16738453

 16751545

 16731779

 16757963

 16725362

 16764636

 16718688

 16771054

 16712270

16777215

 16711757

Harmonies

Analogous

The Analogous color harmony consists of three colors that are next to each other on the color wheel.



15108821



16744871



16680825

Triad

The Triadic color harmony groups three colors that are evenly spaced from another and form a triangle on the color wheel.



16744871



9483607



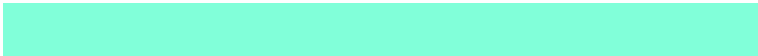
47612

Complementary

The Complementary color scheme is a pair of colors which are on the opposite of each other on the color wheel.



16744871



8519641

Split Complementary

Split-complementary colors differ from the complementary color scheme. The scheme consists of three colors, the original color and two neighbors of the complement color.



49370



16744871



5356924

Square

The Square scheme is like the rectangle color scheme, but the four colors are evenly spaced on the color wheel.



16744871



12691528



49580



6008319

Rectangle

The Rectangle color scheme consists of four colors that form a rectangle on the color wheel.



16744871



15765856



49580



48371

Sweetspot

The Sweet Spot groups the original color and five complimentary colors.



16744871



16767460



14123519



8415599



0



8421504

Same Dimension

The Same Dimension uses a secret algorithm to generate beautiful new colors.



16744871



16738710



16750721



8418167



12517434



4194323

Inverse Universe

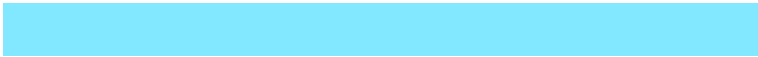
The Inverse Universe completely reimagines the original color for something new.



16744871



16738710



8513791



8418167



12517434



4194323

Previews

White Background



This preview shows how the Decimal color 16744871 looks on a white background.

Color Contrast Check

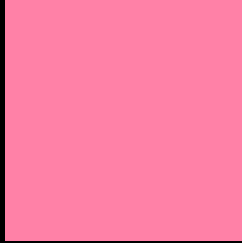
Large Text (above 18pt) WCAG AA × Fail

Any Text WCAG AA × Fail

Large Text (above 18pt) WCAG AAA × Fail

Any Text WCAG AAA × Fail

Black Background



This preview shows how the Decimal color 16744871 looks on a black background.

Color Contrast Check

Large Text (above 18pt) WCAG AA ✓ Pass

Any Text WCAG AA ✓ Pass

Large Text (above 18pt) WCAG AAA ✓ Pass

Any Text WCAG AAA ✓ Pass

If you want to check with other color combinations, try the [Color Contrast Checker](#).

Decimal 16744871 Background



This preview shows how black text looks on a background with the Decimal color 16744871.



This preview shows how white text looks on a background with the Decimal color 16744871.

Color Blindness Simulation

Color vision deficiency is a very complex topic, and I could not describe the different causes any better than Wikipedia does, so if you want to learn more, you should check out their [article about color blindness](#).


Dichromacy



Original Color
16744871

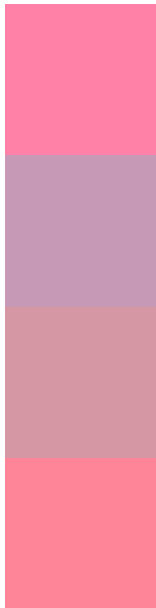
Protanopia
10922174

Deuteranopia
12428449



Tritanopia
16614799

Trichromacy



Original Color
16744871

Protanomaly
13015734

Deuteranomaly
13997987

Tritanomaly
16680088

Monochromacy



Original Color
16744871

Achromatopsia
11250603

Achromatomaly
13278378

CSS Examples

Text

The CSS property to change the color of the text to Decimal 16744871 is called "color". The color property can be set on classes, ids or directly on the HTML element.

This example shows how text in the color #FF81A7 looks like.

```
.text, #text, p{  
  color:#FF81A7  
}
```

If you want to add a text shadow in that color use the text-shadow property, you can generate a text shadow directly with our [CSS Text Shadow Generator](#).

Here you see how black text with a 4 pixel #FF81A7 colored shadow looks like.

```
.shadow{ text-shadow: 4px 4px 2px #FF81A7
}
```

Border

The CSS property to change the border of an element to Decimal 16744871 is called "border". The border property can be set on classes, ids or directly on the HTML element.

This example shows the color as border, it can be applied via the CSS property "border" or "border-color".

```
.border, #border, table{ border:4px solid
#FF81A7 }
```

If only the border color should be changed use the property `border-color`.

```
.border{ border-color:#FF81A7 }
```

If you want to add a box shadow in that color use:

Here you see how a box with a 4 pixel #FF81A7 colored shadow looks like.

```
.boxshadow{ -moz-box-shadow:4px 4px 4px  
4px #FF81A7; -webkit-box-shadow:4px 4px  
4px 4px #FF81A7; box-shadow:4px 4px 4px  
4px #FF81A7 }
```

Background

The CSS property to change the background color of an element to Decimal 16744871 is called "background". The background property can be set on classes, ids or directly on the HTML element.

```
.background, #background, body{  
background:#FF81A7 }
```

If only the background color should be changed can be used:

```
.background{ background-color:#FF81A7 }
```

This example shows the color as background, it is applied via the CSS property "background".

To optimize and compress your CSS code, you can use our [online CSS compressor and optimizer](#) based on csstidy. If you want to create a linear or radial gradient as background or border, check our [CSS Gradient Generator](#).

Hey! You found this booklet interesting? Support Converting Colors with the new Membership Option!

The pro membership hides all ads, plus gives you double the colors in the color bucket, and more awesome pro features!

[Learn more, Memberships starting at \\$2.50/m!](#)

**Follow me
on Twitter!**

@ConvertingColor