

Converting Colors

Decimal(16745383)

Have a look what the booklet for
Decimal(16745383) contains.

Decimal(16745383)	3
<i>Conversions</i>	4
<i>Details</i>	6
<i>Harmonies</i>	11
<i>Previews</i>	23
<i>Color Blindness Simulation</i>	26
<i>CSS Examples</i>	29

Color

Decimal(16745383)

Conversions

Conversions Part 1

Format	Color
Hex	FF83A7
RGB	255, 131, 167
RGB Percent	100%, 51%, 65%
CMY	0.0000, 0.4863, 0.3451
CMYK	0.00, 0.49, 0.35, 0.00
HSL	343°, 100%, 76%
HSV	343°, 49%, 100%
XYZ	56.3314, 40.2826, 41.3656
YIQ	172.1800, 62.3480, 37.4840

Conversions

Conversions Part 2

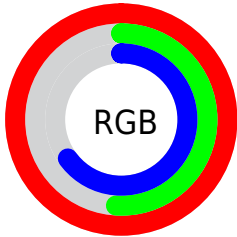
Format	Color
R _Y B	255, 131, 167
Decimal	16745383
CIE Lab	69.67, 50.72, 2.86
CIE LCh	70, 50.803, 3.223
Yxy	40.2826, 0.4083, 0.2919
Android (android.graphics.Color)	4294935463 (0xFFFF83A7)
YUV	172.1800, -2.5537, 72.6331
Hunter-Lab	63.4686, 47.3571, 5.7859

Details

The Decimal color **16745383** is a light color, and the websafe version is hex **FF6699**. A complement of this color would be **8650715**, and the grayscale version is **11316396**.

A 20% lighter version of the original color is **16759774**, and **12799347** is the 20% darker color. If you saturate the color by 10%, you get **16738965**, and if you desaturate by 10%, it is **16751801**.

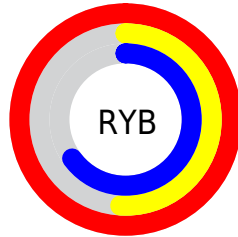
Distribution



Red (100%)

Green (51%)

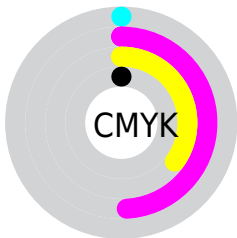
Blue (65%)



Red (100%)

Yellow (51%)

Blue (65%)

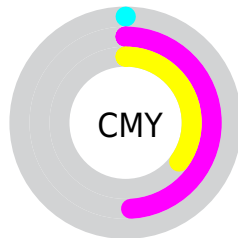


Cyan (0%)

Magenta (49%)

Yellow (35%)

Black (0%)



Cyan (0%)

Magenta (49%)

Yellow (35%)

Brightness & Saturation Gradients

These gradients show how the Decimal color 16745383 changes by changing the brightness by 10 percent. The first figure shows a shift by +10% for each color and the second figure -10%.

Similar to the brightness gradients but the following saturation gradients show a change of the Decimal color 16745383 by changing the saturation by 10% instead.

 16745383

 16745383

16777215

 14772365

 16759774

 12799347

 16766971

 10891611

 16774399

 8982595

 7143469

 5308441

 3735554

 983040

 0

 16745383

 16745383

 16738965

 16751801

 16732291

 16758475

 16725873

 16765149

 16719199

 16771567

 16712781

16777215

 16711754

Harmonies

Analogous

The Analogous color harmony consists of three colors that are next to each other on the color wheel.



15174613



16745383



16615802

Triad

The Triadic color harmony groups three colors that are evenly spaced from another and form a triangle on the color wheel.



16745383



9549402



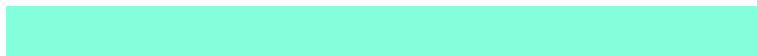
47868

Complementary

The Complementary color scheme is a pair of colors which are on the opposite of each other on the color wheel.



16745383



8650715

Split Complementary

Split-complementary colors differ from the complementary color scheme. The scheme consists of three colors, the original color and two neighbors of the complement color.



49371



16745383



5488255

Square

The Square scheme is like the rectangle color scheme, but the four colors are evenly spaced on the color wheel.



16745383



12691787



49838



6401535

Rectangle

The Rectangle color scheme consists of four colors that form a rectangle on the color wheel.



16745383



15766370



49838



48627

Sweetspot

The Sweet Spot groups the original color and five complimentary colors.



16745383



16767460



14320639



8415599



0



8421504

Same Dimension

The Same Dimension uses a secret algorithm to generate beautiful new colors.



16745383



16739222



16751747



8418166



12517432



4194323

Inverse Universe

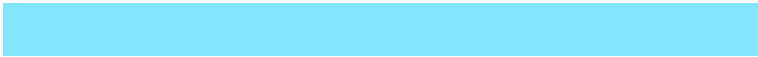
The Inverse Universe completely reimagines the original color for something new.



16745383



16739222



8644351



8418166



12517432



4194323

Previews

White Background



This preview shows how the Decimal color 16745383 looks on a white background.

Color Contrast Check

Large Text (above 18pt) WCAG AA × Fail

Any Text WCAG AA × Fail

Large Text (above 18pt) WCAG AAA × Fail

Any Text WCAG AAA × Fail

Black Background



This preview shows how the Decimal color 16745383 looks on a black background.

Color Contrast Check

Large Text (above 18pt) WCAG AA ✓ Pass

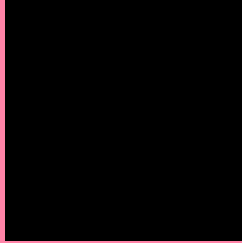
Any Text WCAG AA ✓ Pass

Large Text (above 18pt) WCAG AAA ✓ Pass

Any Text WCAG AAA ✓ Pass

If you want to check with other color combinations, try the [Color Contrast Checker](#).

Decimal 16745383 Background



This preview shows how black text looks on a background with the Decimal color 16745383.



This preview shows how white text looks on a background with the Decimal color 16745383.

Color Blindness Simulation

Color vision deficiency is a very complex topic, and I could not describe the different causes any better than Wikipedia does, so if you want to learn more, you should check out their [article about color blindness](#).

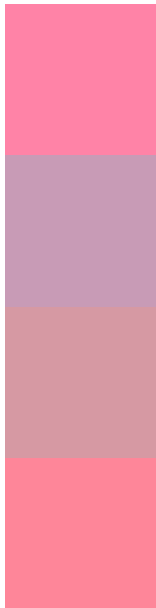
Dichromacy





Tritanopia
16615313

Trichromacy



Original Color
16745383

Protanomaly
13147062

Deuteranomaly
14064035

Tritanomaly
16680601

Monochromacy



Original Color
16745383

Achromatopsia
11316396

Achromatomaly
13278634

CSS Examples

Text

The CSS property to change the color of the text to Decimal 16745383 is called "color". The color property can be set on classes, ids or directly on the HTML element.

This example shows how text in the color #FF83A7 looks like.

```
.text, #text, p{  
    color:#FF83A7  
}
```

If you want to add a text shadow in that color use the text-shadow property, you can generate a text shadow directly with our [CSS Text Shadow Generator](#).

Here you see how black text with a 4 pixel #FF83A7 colored shadow looks like.

```
.shadow{ text-shadow: 4px 4px 2px #FF83A7
}
```

Border

The CSS property to change the border of an element to Decimal 16745383 is called "border". The border property can be set on classes, ids or directly on the HTML element.

This example shows the color as border, it can be applied via the CSS property "border" or "border-color".

```
.border, #border, table{ border:4px solid
#FF83A7 }
```

If only the border color should be changed use the property `border-color`.

```
.border{ border-color:#FF83A7 }
```

If you want to add a box shadow in that color use:

Here you see how a box with a 4 pixel #FF83A7 colored shadow looks like.

```
.boxshadow{ -moz-box-shadow:4px 4px 4px  
4px #FF83A7; -webkit-box-shadow:4px 4px  
4px 4px #FF83A7; box-shadow:4px 4px 4px  
4px #FF83A7 }
```

Background

The CSS property to change the background color of an element to Decimal 16745383 is called "background". The background property can be set on classes, ids or directly on the HTML element.

```
.background, #background, body{  
background:#FF83A7 }
```

If only the background color should be changed can be used:

```
.background{ background-color:#FF83A7 }
```

This example shows the color as background, it is applied via the CSS property "background".

To optimize and compress your CSS code, you can use our [online CSS compressor and optimizer](#) based on csstidy. If you want to create a linear or radial gradient as background or border, check our [CSS Gradient Generator](#).

Hey! You found this booklet interesting? Support Converting Colors with the new Membership Option!

The pro membership hides all ads, plus gives you double the colors in the color bucket, and more awesome pro features!

[Learn more, Memberships starting at \\$2.50/m!](#)

**Follow me
on Twitter!**

@ConvertingColor