

Converting Colors

Decimal(16747867)

Have a look what the booklet for
Decimal(16747867) contains.

Decimal(16747867)	3
<i>Conversions</i>	4
<i>Details</i>	6
<i>Harmonies</i>	11
<i>Previews</i>	23
<i>Color Blindness Simulation</i>	26
<i>CSS Examples</i>	29

Color

Decimal(16747867)

Conversions

Conversions Part 1

Format	Color
Hex	FF8D5B
RGB	255, 141, 91
RGB Percent	100%, 55%, 36%
CMY	0.0000, 0.4471, 0.6431
CMYK	0.00, 0.45, 0.64, 0.00
HSL	18°, 100%, 68%
HSV	18°, 64%, 100%
XYZ	52.6532, 41.0651, 15.0488
YIQ	169.3860, 83.9940, 8.6180

Conversions

Conversions Part 2

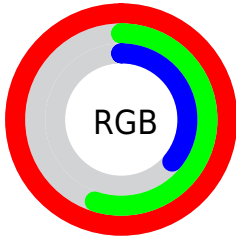
Format	Color
RYB	255, 163, 91
Decimal	16747867
CIELab	70.22, 39.00, 45.25
CIElCh	70, 59.739, 49.244
Yxy	41.0651, 0.4841, 0.3776
Android (android.graphics.Color)	4294937947 (0xFFFF8D5B)
YUV	169.3860, -38.6443, 75.0835
Hunter-Lab	64.0820, 34.5215, 30.9340

Details

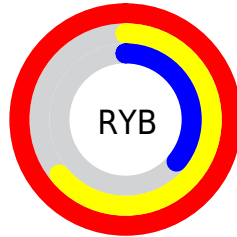
The Decimal color **16747867** is a light color, and the websafe version is hex **FF9966**. The color can be described as light muted orange. A complement of this color would be **6016511**, and the grayscale version is **11184810**.

A 20% lighter version of the original color is **16761998**, and **12671274** is the 20% darker color. If you saturate the color by 10%, you get **16743234**, and if you desaturate by 10%, it is **16752501**.

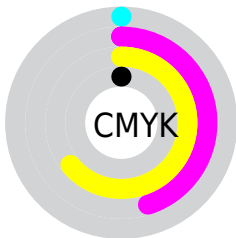
Distribution



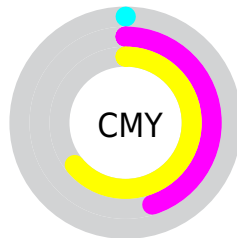
- Red (100%)
- Green (55%)
- Blue (36%)



- Red (100%)
- Yellow (64%)
- Blue (36%)



- Cyan (0%)
- Magenta (45%)
- Yellow (64%)
- Black (0%)



- Cyan (0%)
- Magenta (45%)
- Yellow (64%)

Brightness & Saturation Gradients

These gradients show how the Decimal color 16747867 changes by changing the brightness by 10 percent. The first figure shows a shift by +10% for each color and the second figure -10%.

Similar to the brightness gradients but the following saturation gradients show a change of the Decimal color 16747867 by changing the saturation by 10% instead.

 16747867  16747867

16777215  14709570

 16761998  12671274

 16769193  10698514

 16776645  8726016

 16777185  6752256

16777214  4849664

 3276802

 0

 16747867  16747867

16743234

16752501

16738856

16756878

16734223

16761512

16731648

16766145

16770779

16775156

16777215

Harmonies

Analogous

The Analogous color harmony consists of three colors that are next to each other on the color wheel.



16743819



16747867



14328380

Triad

The Triadic color harmony groups three colors that are evenly spaced from another and form a triangle on the color wheel.



16747867



50582



9217535

Complementary

The Complementary color scheme is a pair of colors which are on the opposite of each other on the color wheel.



16747867



6016511

Split Complementary

Split-complementary colors differ from the complementary color scheme. The scheme consists of three colors, the original color and two neighbors of the complement color.



47103



16747867



50894

Square

The Square scheme is like the rectangle color scheme, but the four colors are evenly spaced on the color wheel.



16747867



6799201



49917



14389235

Rectangle

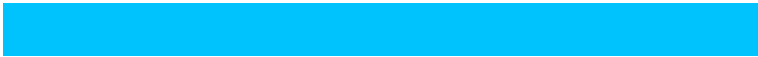
The Rectangle color scheme consists of four colors that form a rectangle on the color wheel.



16747867



12234296



49917



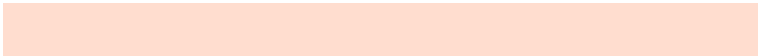
6597887

Sweetspot

The Sweet Spot groups the original color and five complimentary colors.



16747867



16768463



16735182



8416098



0



8421504

Same Dimension

The Same Dimension uses a secret algorithm to generate beautiful new colors.



16747867



16742203



16768603



8419187



12532224



4199168

Inverse Universe

The Inverse Universe completely reimagines the original color for something new.



6016511



3916799



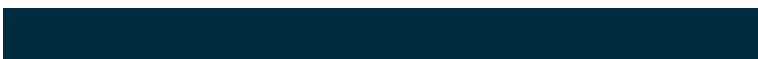
5995775



7568512



34239



11328

Previews

White Background



This preview shows how the Decimal color 16747867 looks on a white background.

Color Contrast Check

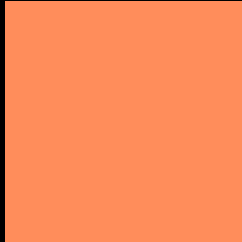
Large Text (above 18pt) WCAG AA × Fail

Any Text WCAG AA × Fail

Large Text (above 18pt) WCAG AAA × Fail

Any Text WCAG AAA × Fail

Black Background



This preview shows how the Decimal color 16747867 looks on a black background.

Color Contrast Check

Large Text (above 18pt) WCAG AA ✓ Pass

Any Text WCAG AA ✓ Pass

Large Text (above 18pt) WCAG AAA ✓ Pass

Any Text WCAG AAA ✓ Pass

If you want to check with other color combinations, try the [Color Contrast Checker](#).

Decimal 16747867 Background



This preview shows how black text looks on a background with the Decimal color 16747867.



This preview shows how white text looks on a background with the Decimal color 16747867.

Color Blindness Simulation

Color vision deficiency is a very complex topic, and I could not describe the different causes any better than Wikipedia does, so if you want to learn more, you should check out their [article about color blindness](#).

Dichromacy



Original Color
16747867

Protanopia
12364902

Deuteranopia
13935702



Tritanopia
16746641

Trichromacy



Original Color

16747867



Protanomaly

13934946



Deuteranomaly

14982232



Tritanomaly

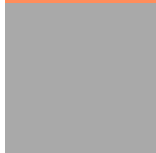
16747133

Monochromacy



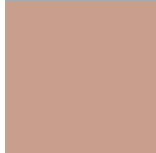
Original Color

16747867



Achromatopsia

11119017



Achromatomaly

13148045

CSS Examples

Text

The CSS property to change the color of the text to Decimal 16747867 is called "color". The color property can be set on classes, ids or directly on the HTML element.

This example shows how text in the color #FF8D5B looks like.

```
.text, #text, p{  
    color:#FF8D5B  
}
```

If you want to add a text shadow in that color use the text-shadow property, you can generate a text shadow directly with our [CSS Text Shadow Generator](#).

Here you see how black text with a 4 pixel #FF8D5B colored shadow looks like.

```
.shadow{ text-shadow: 4px 4px 2px #FF8D5B
}
```

Border

The CSS property to change the border of an element to Decimal 16747867 is called "border". The border property can be set on classes, ids or directly on the HTML element.

This example shows the color as border, it can be applied via the CSS property "border" or "border-color".

```
.border, #border, table{ border:4px solid
#FF8D5B }
```

If only the border color should be changed use the property `border-color`.

```
.border{ border-color:#FF8D5B }
```

If you want to add a box shadow in that color use:

Here you see how a box with a 4 pixel #FF8D5B colored shadow looks like.

```
.boxshadow{ -moz-box-shadow:4px 4px 4px  
4px #FF8D5B; -webkit-box-shadow:4px 4px  
4px 4px #FF8D5B; box-shadow:4px 4px 4px  
4px #FF8D5B }
```

Background

The CSS property to change the background color of an element to Decimal 16747867 is called "background". The background property can be set on classes, ids or directly on the HTML element.

```
.background, #background, body{  
background:#FF8D5B }
```

If only the background color should be changed can be used:

```
.background{ background-color:#FF8D5B }
```

This example shows the color as background, it is applied via the CSS property "background".

To optimize and compress your CSS code, you can use our [online CSS compressor and optimizer](#) based on csstidy. If you want to create a linear or radial gradient as background or border, check our [CSS Gradient Generator](#).

Hey! You found this booklet interesting? Support Converting Colors with the new Membership Option!

The pro membership hides all ads, plus gives you double the colors in the color bucket, and more awesome pro features!

[Learn more, Memberships starting at \\$2.50/m!](#)

**Follow me
on Twitter!**

@ConvertingColor