

Converting Colors

Decimal(16748646)

Have a look what the booklet for
Decimal(16748646) contains.

Decimal(16748646)	3
<i>Conversions</i>	4
<i>Details</i>	6
<i>Harmonies</i>	11
<i>Previews</i>	23
<i>Color Blindness Simulation</i>	26
<i>CSS Examples</i>	29

Color

Decimal(16748646)

Conversions

Conversions Part 1

Format	Color
Hex	FF9066
RGB	255, 144, 102
RGB Percent	100%, 56%, 40%
CMY	0.0000, 0.4353, 0.6000
CMYK	0.00, 0.44, 0.60, 0.00
HSL	16°, 100%, 70%
HSV	16°, 60%, 100%
XYZ	53.6115, 42.1658, 17.8836
YIQ	172.4010, 79.6380, 10.4700

Conversions

Conversions Part 2

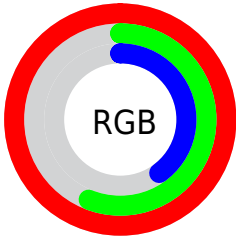
Format	Color
R_{YB}	255, 160, 102
Decimal	16748646
CIE _{Lab}	70.99, 38.18, 40.45
CIE _{LCh}	71, 55.623, 46.647
Yxy	42.1658, 0.4717, 0.3710
Android (android.graphics.Color)	4294938726 (0xFFFF9066)
YUV	172.4010, -34.7077, 72.4393
Hunter-Lab	64.9352, 33.7358, 29.1258

Details

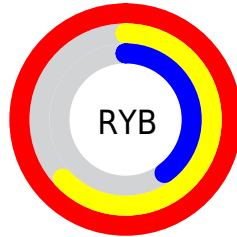
The Decimal color **16748646** is a light color, and the websafe version is hex **FF9966**. A complement of this color would be **6739455**, and the grayscale version is **11382189**.

A 20% lighter version of the original color is **16762778**, and **12672054** is the 20% darker color. If you saturate the color by 10%, you get **16743757**, and if you desaturate by 10%, it is **16753536**.

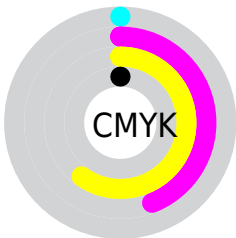
Distribution



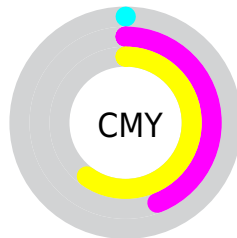
- Red (100%)
- Green (56%)
- Blue (40%)



- Red (100%)
- Yellow (63%)
- Blue (40%)



- Cyan (0%)
- Magenta (44%)
- Yellow (60%)
- Black (0%)



- Cyan (0%)
- Magenta (44%)
- Yellow (60%)

Brightness & Saturation Gradients

These gradients show how the Decimal color 16748646 changes by changing the brightness by 10 percent. The first figure shows a shift by +10% for each color and the second figure -10%.

Similar to the brightness gradients but the following saturation gradients show a change of the Decimal color 16748646 by changing the saturation by 10% instead.

 16748646

 16748646

16777215

 14710349

 16762778

 12672054

 16769973

 10699294

 16777169

 8792326

 16777197

 6884608

 4980736

 3276801

 0

 16748646

 16748646

■ 16743757

■ 16753536

■ 16739123

■ 16758169

■ 16734233

■ 16763059

■ 16729600

■ 16767692

■ 16772582

16777215

Harmonies

Analogous

The Analogous color harmony consists of three colors that are next to each other on the color wheel.



16745363



16748646



14590792

Triad

The Triadic color harmony groups three colors that are evenly spaced from another and form a triangle on the color wheel.



16748646



50837



9087487

Complementary

The Complementary color scheme is a pair of colors which are on the opposite of each other on the color wheel.



16748646



6739455

Split Complementary

Split-complementary colors differ from the complementary color scheme. The scheme consists of three colors, the original color and two neighbors of the complement color.



47871



16748646



51145

Square

The Square scheme is like the rectangle color scheme, but the four colors are evenly spaced on the color wheel.



16748646



7716709



50166



13997556

Rectangle

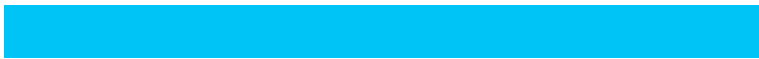
The Rectangle color scheme consists of four colors that form a rectangle on the color wheel.



16748646



12627780



50166



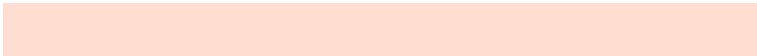
6729727

Sweetspot

The Sweet Spot groups the original color and five complimentary colors.



16748646



16768721



16738006



8416099



0



8421504

Same Dimension

The Same Dimension uses a secret algorithm to generate beautiful new colors.



16748646



16742983



16767846



8418931



12530688



4198656

Inverse Universe

The Inverse Universe completely reimagines the original color for something new.



6739455



4705791



6720255



7568512



35775



11840

Previews

White Background



This preview shows how the Decimal color 16748646 looks on a white background.

Color Contrast Check

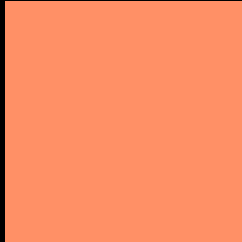
Large Text (above 18pt) WCAG AA × Fail

Any Text WCAG AA × Fail

Large Text (above 18pt) WCAG AAA × Fail

Any Text WCAG AAA × Fail

Black Background



This preview shows how the Decimal color 16748646 looks on a black background.

Color Contrast Check

Large Text (above 18pt) WCAG AA ✓ Pass

Any Text WCAG AA ✓ Pass

Large Text (above 18pt) WCAG AAA ✓ Pass

Any Text WCAG AAA ✓ Pass

If you want to check with other color combinations, try the [Color Contrast Checker](#).

Decimal 16748646 Background



This preview shows how black text looks on a background with the Decimal color 16748646.



This preview shows how white text looks on a background with the Decimal color 16748646.

Color Blindness Simulation

Color vision deficiency is a very complex topic, and I could not describe the different causes any better than Wikipedia does, so if you want to learn more, you should check out their [article about color blindness](#).

Dichromacy





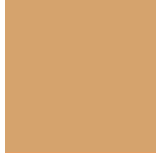
Tritanopia
16747669

Trichromacy



Original Color

16748646



Protanomaly

14001005



Deuteranomaly

14982755



Tritanomaly

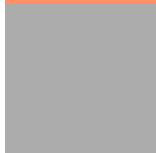
16747908

Monochromacy



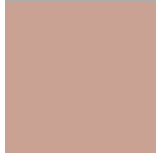
Original Color

16748646



Achromatopsia

11316396



Achromatomaly

13279891

CSS Examples

Text

The CSS property to change the color of the text to Decimal 16748646 is called "color". The color property can be set on classes, ids or directly on the HTML element.

This example shows how text in the color #FF9066 looks like.

```
.text, #text, p{  
    color:#FF9066  
}
```

If you want to add a text shadow in that color use the text-shadow property, you can generate a text shadow directly with our [CSS Text Shadow Generator](#).

Here you see how black text with a 4 pixel #FF9066 colored shadow looks like.

```
.shadow{ text-shadow: 4px 4px 2px #FF9066  
}
```

Border

The CSS property to change the border of an element to Decimal 16748646 is called "border". The border property can be set on classes, ids or directly on the HTML element.

This example shows the color as border, it can be applied via the CSS property "border" or "border-color".

```
.border, #border, table{ border:4px solid  
#FF9066 }
```

If only the border color should be changed use the property `border-color`.

```
.border{ border-color:#FF9066 }
```

If you want to add a box shadow in that color use:

Here you see how a box with a 4 pixel #FF9066 colored shadow looks like.

```
.boxshadow{ -moz-box-shadow:4px 4px 4px  
4px #FF9066; -webkit-box-shadow:4px 4px  
4px 4px #FF9066; box-shadow:4px 4px 4px  
4px #FF9066 }
```

Background

The CSS property to change the background color of an element to Decimal 16748646 is called "background". The background property can be set on classes, ids or directly on the HTML element.

```
.background, #background, body{  
background:#FF9066 }
```

If only the background color should be changed can be used:

```
.background{ background-color:#FF9066 }
```

This example shows the color as background, it is applied via the CSS property "background".

To optimize and compress your CSS code, you can use our [online CSS compressor and optimizer](#) based on csstidy. If you want to create a linear or radial gradient as background or border, check our [CSS Gradient Generator](#).

Hey! You found this booklet interesting? Support Converting Colors with the new Membership Option!

The pro membership hides all ads, plus gives you double the colors in the color bucket, and more awesome pro features!

[Learn more, Memberships starting at \\$2.50/m!](#)

**Follow me
on Twitter!**

@ConvertingColor