

# Converting Colors

Decimal(16749171)

Have a look what the booklet for  
Decimal(16749171) contains.

<b>Decimal(16749171)</b> .....	3
<i><b>Conversions</b></i> .....	4
<i><b>Details</b></i> .....	6
<i><b>Harmonies</b></i> .....	11
<i><b>Previews</b></i> .....	23
<i><b>Color Blindness Simulation</b></i> .....	26
<i><b>CSS Examples</b></i> .....	29

# **Color**

**Decimal(16749171)**

# Conversions

## Conversions Part 1

Format	Color
Hex	FF9273
RGB	255, 146, 115
RGB Percent	100%, 57%, 45%
CMY	0.0000, 0.4275, 0.5490
CMYK	0.00, 0.43, 0.55, 0.00
HSL	13°, 100%, 73%
HSV	13°, 55%, 100%
XYZ	54.6134, 43.0556, 21.6518
YIQ	175.0570, 74.9150, 13.4670

# Conversions

## Conversions Part 2

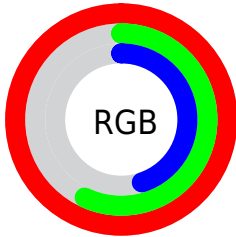
<b>Format</b>	<b>Color</b>
<b>R<sub>YB</sub></b>	255, 155, 115
Decimal	16749171
CIE <sub>Lab</sub>	71.59, 38.12, 34.29
CIE <sub>LCh</sub>	72, 51.272, 41.966
Yxy	43.0556, 0.4577, 0.3608
Android (android.graphics.Color)	4294939251 (0xFFFF9273)
YUV	175.0570, -29.6081, 70.1100
Hunter-Lab	65.6167, 33.7378, 26.3676

# Details

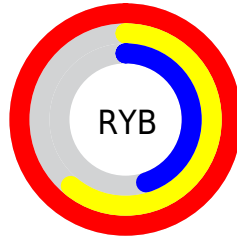
The Decimal color **16749171** is a light color, and the websafe version is hex **FF9966**. A complement of this color would be **7594239**, and the grayscale version is **11513775**.

A 20% lighter version of the original color is **16763303**, and **12738114** is the 20% darker color. If you saturate the color by 10%, you get **16744026**, and if you desaturate by 10%, it is **16754317**.

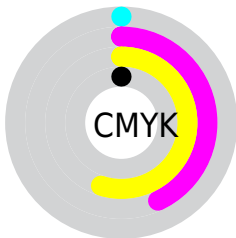
# Distribution



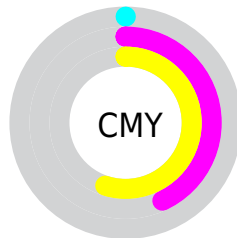
- Red (100%)
- Green (57%)
- Blue (45%)



- Red (100%)
- Yellow (61%)
- Blue (45%)



- Cyan (0%)
- Magenta (43%)
- Yellow (55%)
- Black (0%)



- Cyan (0%)
- Magenta (43%)
- Yellow (55%)

# Brightness & Saturation Gradients

These gradients show how the Decimal color 16749171 changes by changing the brightness by 10 percent. The first figure shows a shift by +10% for each color and the second figure -10%.

Similar to the brightness gradients but the following saturation gradients show a change of the Decimal color 16749171 by changing the saturation by 10% instead.



 16749171

 16749171

16777215

 14710618

 16763303

 12738114

 16770755

 10765355

 16777183

 8858389

 16777211

 6950656

 5046272

 3407873

 327680

 0

16749171

16749171

16744026

16754317

16738880

16759462

16733734

16764608

16728845

16769497

16726016

16774643

16777215

# Harmonies

## Analogous

The Analogous color harmony consists of three colors that are next to each other on the color wheel.



16746654



16749171



14918485

# Triad

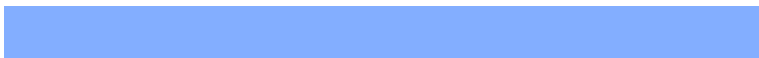
The Triadic color harmony groups three colors that are evenly spaced from another and form a triangle on the color wheel.



16749171



4048273



8630015

# Complementary

The Complementary color scheme is a pair of colors which are on the opposite of each other on the color wheel.



16749171



7594239

# Split Complementary

Split-complementary colors differ from the complementary color scheme. The scheme consists of three colors, the original color and two neighbors of the complement color.



48383



16749171



51137

# Square

The Square scheme is like the rectangle color scheme, but the four colors are evenly spaced on the color wheel.



16749171



8830567



50669



13343989

# Rectangle

The Rectangle color scheme consists of four colors that form a rectangle on the color wheel.



16749171



13151823



50669



6468607

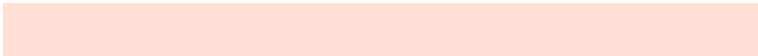


# Sweetspot

The Sweet Spot groups the original color and five complimentary colors.



16749171



16768982



16741345



8416615



0



8421504



# Same Dimension

The Same Dimension uses a secret algorithm to generate beautiful new colors.



16749171



16743511



16766835



8418931



12528128



4197888



# Inverse Universe

The Inverse Universe completely reimagines the original color for something new.



7594239



5757695



7576575



7568768



38335



12864



# Previews

## White Background



This preview shows how the Decimal color 16749171 looks on a white background.

## Color Contrast Check

Large Text (above 18pt) WCAG AA × Fail

Any Text WCAG AA × Fail

Large Text (above 18pt) WCAG AAA × Fail

Any Text WCAG AAA × Fail

# Black Background



This preview shows how the Decimal color 16749171 looks on a black background.

## Color Contrast Check

Large Text (above 18pt) WCAG AA ✓ Pass

Any Text WCAG AA ✓ Pass

Large Text (above 18pt) WCAG AAA ✓ Pass

Any Text WCAG AAA ✓ Pass

If you want to check with other color combinations, try the [Color Contrast Checker](#).



## Decimal 16749171 Background



This preview shows how black text looks on a background with the Decimal color 16749171.

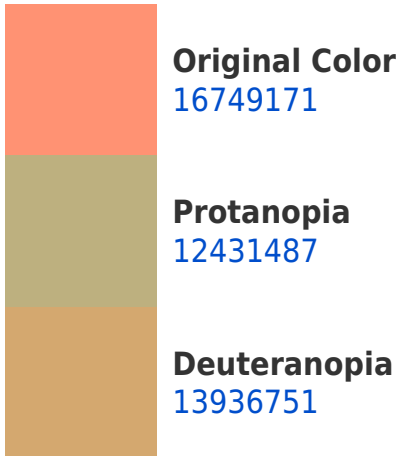


This preview shows how white text looks on a background with the Decimal color 16749171.

# Color Blindness Simulation

Color vision deficiency is a very complex topic, and I could not describe the different causes any better than Wikipedia does, so if you want to learn more, you should check out their [article about color blindness](#).

## Dichromacy





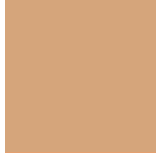
**Tritanopia**  
16748440

# Trichromacy



**Original Color**

16749171



**Protanomaly**

14001531



**Deuteranomaly**

14983280



**Tritanomaly**

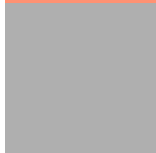
16748683

# Monochromacy



**Original Color**

16749171



**Achromatopsia**

11513775



**Achromatomaly**

13411481

# CSS Examples

## Text

The CSS property to change the color of the text to Decimal 16749171 is called "color". The color property can be set on classes, ids or directly on the HTML element.

This example shows how text in the color #FF9273 looks like.

```
.text, #text, p{  
  color:#FF9273  
}
```

If you want to add a text shadow in that color use the text-shadow property, you can generate a text shadow directly with our [CSS Text Shadow Generator](#).

Here you see how black text with a 4 pixel #FF9273 colored shadow looks like.

```
.shadow{ text-shadow: 4px 4px 2px #FF9273
}
```

## Border

The CSS property to change the border of an element to Decimal 16749171 is called "border". The border property can be set on classes, ids or directly on the HTML element.

This example shows the color as border, it can be applied via the CSS property "border" or "border-color".

```
.border, #border, table{ border:4px solid
#FF9273 }
```

If only the border color should be changed use the property `border-color`.

```
.border{ border-color:#FF9273 }
```

If you want to add a box shadow in that color use:

Here you see how a box with a 4 pixel #FF9273 colored shadow looks like.

```
.boxshadow{ -moz-box-shadow:4px 4px 4px  
4px #FF9273; -webkit-box-shadow:4px 4px  
4px 4px #FF9273; box-shadow:4px 4px 4px  
4px #FF9273 }
```

# Background

The CSS property to change the background color of an element to Decimal 16749171 is called "background". The background property can be set on classes, ids or directly on the HTML element.

```
.background, #background, body{  
background:#FF9273 }
```

If only the background color should be changed can be used:

```
.background{ background-color:#FF9273 }
```

This example shows the color as background, it is applied via the CSS property "background".

To optimize and compress your CSS code, you can use our [online CSS compressor and optimizer](#) based on csstidy. If you want to create a linear or radial gradient as background or border, check our [CSS Gradient Generator](#).



Hey! You found this booklet interesting? Support Converting Colors with the new Membership Option!

The pro membership hides all ads, plus gives you double the colors in the color bucket, and more awesome pro features!

**[Learn more, Memberships starting at \\$2.50/m!](#)**

**Follow me  
on Twitter!**

@ConvertingColor