

Converting Colors

Decimal(16749948)

Have a look what the booklet for
Decimal(16749948) contains.

Decimal(16749948)	3
<i>Conversions</i>	4
<i>Details</i>	6
<i>Harmonies</i>	11
<i>Previews</i>	23
<i>Color Blindness Simulation</i>	26
<i>CSS Examples</i>	29

Color

Decimal(16749948)

Conversions

Conversions Part 1

Format	Color
Hex	FF957C
RGB	255, 149, 124
RGB Percent	100%, 58%, 49%
CMY	0.0000, 0.4157, 0.5137
CMYK	0.00, 0.42, 0.51, 0.00
HSL	11°, 100%, 74%
HSV	11°, 51%, 100%
XYZ	55.6255, 44.2101, 24.6704
YIQ	177.8440, 71.2010, 14.6970

Conversions

Conversions Part 2

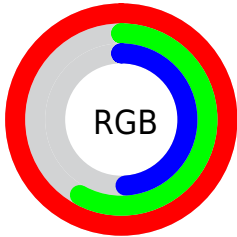
Format	Color
R_{YB}	255, 155, 124
Decimal	16749948
CIE _{Lab}	72.37, 37.33, 30.43
CIE _{LCh}	72, 48.163, 39.187
Yxy	44.2101, 0.4468, 0.3551
Android (android.graphics.Color)	4294940028 (0xFFFF957C)
YUV	177.8440, -26.5451, 67.6658
Hunter-Lab	66.4907, 32.9728, 24.5448

Details

The Decimal color **16749948** is a light color, and the websafe version is hex **FF9966**. A complement of this color would be **8185599**, and the grayscale version is **11711154**.

A 20% lighter version of the original color is **16764081**, and **12738635** is the 20% darker color. If you saturate the color by 10%, you get **16744547**, and if you desaturate by 10%, it is **16755350**.

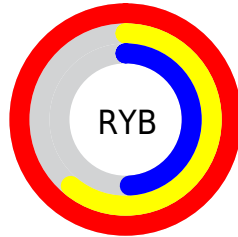
Distribution



Red (100%)

Green (58%)

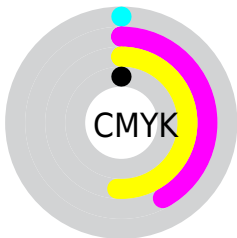
Blue (49%)



Red (100%)

Yellow (61%)

Blue (49%)

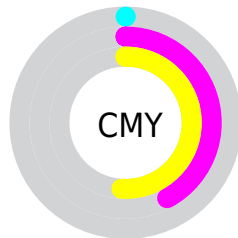


Cyan (0%)

Magenta (42%)

Yellow (51%)

Black (0%)



Cyan (0%)

Magenta (42%)

Yellow (51%)

Brightness & Saturation Gradients

These gradients show how the Decimal color 16749948 changes by changing the brightness by 10 percent. The first figure shows a shift by +10% for each color and the second figure -10%.

Similar to the brightness gradients but the following saturation gradients show a change of the Decimal color 16749948 by changing the saturation by 10% instead.

 16749948

 16749948

16777215

 14711395

 16764081

 12738635

 16771532

 10831668

 16777193

 8924702

 7017223

 5177344

 3407872

 786432

 0

16749948

16749948

16744547

16755350

16739401

16760495

16734000

16765897

16728598

16771298

16724224

16776444

16777215

Harmonies

Analogous

The Analogous color harmony consists of three colors that are next to each other on the color wheel.



16747941



16749948



15115359

Triad

The Triadic color harmony groups three colors that are evenly spaced from another and form a triangle on the color wheel.



16749948



5490321



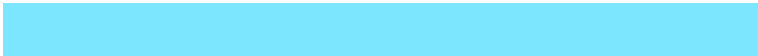
8565247

Complementary

The Complementary color scheme is a pair of colors which are on the opposite of each other on the color wheel.



16749948



8185599

Split Complementary

Split-complementary colors differ from the complementary color scheme. The scheme consists of three colors, the original color and two neighbors of the complement color.



49151



16749948



51390

Square

The Square scheme is like the rectangle color scheme, but the four colors are evenly spaced on the color wheel.



16749948



9486187



50920



13083126

Rectangle

The Rectangle color scheme consists of four colors that form a rectangle on the color wheel.



16749948



13479767



50920



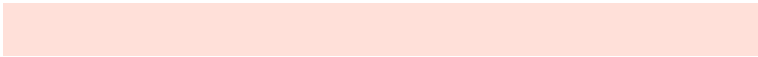
6600447

Sweetspot

The Sweet Spot groups the original color and five complimentary colors.



16749948



16769241



16743655



8416617



0



8421504

Same Dimension

The Same Dimension uses a secret algorithm to generate beautiful new colors.



16749948



16744289



16766588



8418675



12526592



4197376

Inverse Universe

The Inverse Universe completely reimagines the original color for something new.



8185599



6414847



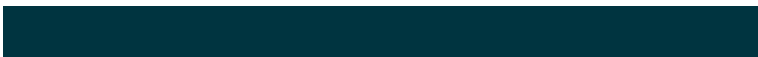
8168959



7568768



39871



13376

Previews

White Background



This preview shows how the Decimal color 16749948 looks on a white background.

Color Contrast Check

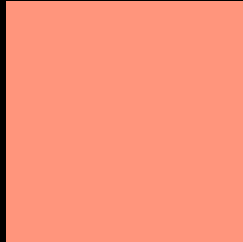
Large Text (above 18pt) WCAG AA × Fail

Any Text WCAG AA × Fail

Large Text (above 18pt) WCAG AAA × Fail

Any Text WCAG AAA × Fail

Black Background



This preview shows how the Decimal color 16749948 looks on a black background.

Color Contrast Check

Large Text (above 18pt) WCAG AA ✓ Pass

Any Text WCAG AA ✓ Pass

Large Text (above 18pt) WCAG AAA ✓ Pass

Any Text WCAG AAA ✓ Pass

If you want to check with other color combinations, try the [Color Contrast Checker](#).

Decimal 16749948 Background



This preview shows how black text looks on a background with the Decimal color 16749948.



This preview shows how white text looks on a background with the Decimal color 16749948.

Color Blindness Simulation

Color vision deficiency is a very complex topic, and I could not describe the different causes any better than Wikipedia does, so if you want to learn more, you should check out their [article about color blindness](#).

Dichromacy



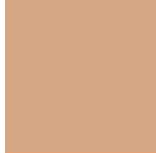


Tritanopia
16749212

Trichromacy



Original Color
16749948



Protanomaly
14067588



Deuteranomaly
14983801

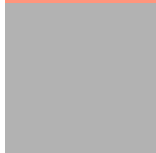


Tritanomaly
16749456

Monochromacy



Original Color
16749948



Achromatopsia
11711154



Achromatomaly
13543326

CSS Examples

Text

The CSS property to change the color of the text to Decimal 16749948 is called "color". The color property can be set on classes, ids or directly on the HTML element.

This example shows how text in the color #FF957C looks like.

```
.text, #text, p{  
    color:#FF957C  
}
```

If you want to add a text shadow in that color use the text-shadow property, you can generate a text shadow directly with our [CSS Text Shadow Generator](#).

Here you see how black text with a 4 pixel #FF957C colored shadow looks like.

```
.shadow{ text-shadow: 4px 4px 2px #FF957C
}
```

Border

The CSS property to change the border of an element to Decimal 16749948 is called "border". The border property can be set on classes, ids or directly on the HTML element.

This example shows the color as border, it can be applied via the CSS property "border" or "border-color".

```
.border, #border, table{ border:4px solid
#FF957C }
```

If only the border color should be changed use the property `border-color`.

```
.border{ border-color:#FF957C }
```

If you want to add a box shadow in that color use:

Here you see how a box with a 4 pixel #FF957C colored shadow looks like.

```
.boxshadow{ -moz-box-shadow:4px 4px 4px  
4px #FF957C; -webkit-box-shadow:4px 4px  
4px 4px #FF957C; box-shadow:4px 4px 4px  
4px #FF957C }
```

Background

The CSS property to change the background color of an element to Decimal 16749948 is called "background". The background property can be set on classes, ids or directly on the HTML element.

```
.background, #background, body{  
background:#FF957C }
```

If only the background color should be changed can be used:

```
.background{ background-color:#FF957C }
```

This example shows the color as background, it is applied via the CSS property "background".

To optimize and compress your CSS code, you can use our [online CSS compressor and optimizer](#) based on csstidy. If you want to create a linear or radial gradient as background or border, check our [CSS Gradient Generator](#).

Hey! You found this booklet interesting? Support Converting Colors with the new Membership Option!

The pro membership hides all ads, plus gives you double the colors in the color bucket, and more awesome pro features!

[Learn more, Memberships starting at \\$2.50/m!](#)

**Follow me
on Twitter!**

@ConvertingColor