

Converting Colors

Decimal(16749958)

Have a look what the booklet for
Decimal(16749958) contains.

Decimal(16749958)	3
<i>Conversions</i>	4
<i>Details</i>	6
<i>Harmonies</i>	11
<i>Previews</i>	23
<i>Color Blindness Simulation</i>	26
<i>CSS Examples</i>	29

Color

Decimal(16749958)

Conversions

Conversions Part 1

Format	Color
Hex	FF9586
RGB	255, 149, 134
RGB Percent	100%, 58%, 53%
CMY	0.0000, 0.4157, 0.4745
CMYK	0.00, 0.42, 0.47, 0.00
HSL	7°, 100%, 76%
HSV	7°, 47%, 100%
XYZ	56.2905, 44.4761, 28.1722
YIQ	178.9840, 67.9910, 17.8070

Conversions

Conversions Part 2

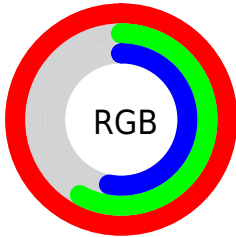
Format	Color
R_{YB}	255, 151, 134
Decimal	16749958
CIE _{Lab}	72.55, 38.23, 25.22
CIE _{LCh}	73, 45.799, 33.416
Yxy	44.4761, 0.4366, 0.3449
Android (android.graphics.Color)	4294940038 (0xFFFF9586)
YUV	178.9840, -22.1771, 66.6660
Hunter-Lab	66.6904, 33.9560, 21.6373

Details

The Decimal color **16749958** is a light color, and the websafe version is hex **FF9999**. A complement of this color would be **8843519**, and the grayscale version is **11776947**.

A 20% lighter version of the original color is **16764091**, and **12804180** is the 20% darker color. If you saturate the color by 10%, you get **16744301**, and if you desaturate by 10%, it is **16755616**.

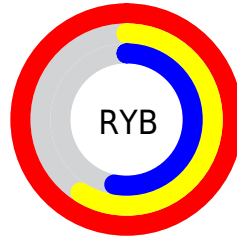
Distribution



Red (100%)

Green (58%)

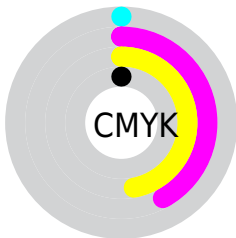
Blue (53%)



Red (100%)

Yellow (59%)

Blue (53%)

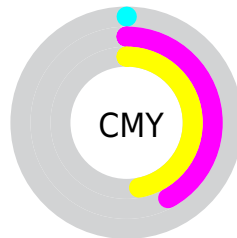


Cyan (0%)

Magenta (42%)

Yellow (47%)

Black (0%)



Cyan (0%)

Magenta (42%)

Yellow (47%)

Brightness & Saturation Gradients

These gradients show how the Decimal color 16749958 changes by changing the brightness by 10 percent. The first figure shows a shift by +10% for each color and the second figure -10%.

Similar to the brightness gradients but the following saturation gradients show a change of the Decimal color 16749958 by changing the saturation by 10% instead.

 16749958

 16749958

16777215

 14776941

 16764091

 12804180

 16771543

 10831677

 16777203

 8924711

 7082770

 5242880

 3538944

 983040

 0

16749958

16749958

16744301

16755616

16738387

16761529

16732730

16767187

16727072

16772844

16721159

16777215

16719872

Harmonies

Analogous

The Analogous color harmony consists of three colors that are next to each other on the color wheel.



16748719



16749958



15377000

Triad

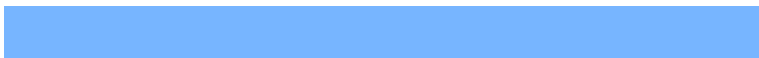
The Triadic color harmony groups three colors that are evenly spaced from another and form a triangle on the color wheel.



16749958



6735243



7845375

Complementary

The Complementary color scheme is a pair of colors which are on the opposite of each other on the color wheel.



16749958



8843519

Split Complementary

Split-complementary colors differ from the complementary color scheme. The scheme consists of three colors, the original color and two neighbors of the complement color.



49404



16749958



51382

Square

The Square scheme is like the rectangle color scheme, but the four colors are evenly spaced on the color wheel.



16749958



10272106



50911



12363256

Rectangle

The Rectangle color scheme consists of four colors that form a rectangle on the color wheel.



16749958



13937758



50911



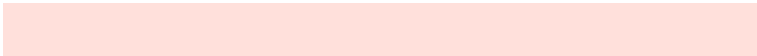
5945855

Sweetspot

The Sweet Spot groups the original color and five complimentary colors.



16749958



16769243



16746225



8416618



0



8421504

Same Dimension

The Same Dimension uses a secret algorithm to generate beautiful new colors.



16749958



16744558



16765318



8418419



12523520



4196352

Inverse Universe

The Inverse Universe completely reimagines the original color for something new.



8843519



7269887



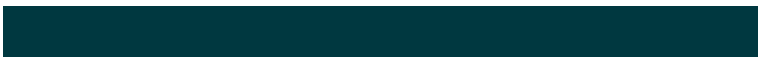
8828159



7569024



43199



14400

Previews

White Background



This preview shows how the Decimal color 16749958 looks on a white background.

Color Contrast Check

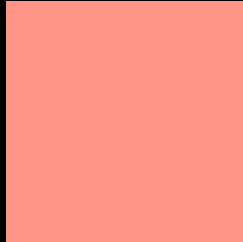
Large Text (above 18pt) WCAG AA × Fail

Any Text WCAG AA × Fail

Large Text (above 18pt) WCAG AAA × Fail

Any Text WCAG AAA × Fail

Black Background



This preview shows how the Decimal color 16749958 looks on a black background.

Color Contrast Check

Large Text (above 18pt) WCAG AA ✓ Pass

Any Text WCAG AA ✓ Pass

Large Text (above 18pt) WCAG AAA ✓ Pass

Any Text WCAG AAA ✓ Pass

If you want to check with other color combinations, try the [Color Contrast Checker](#).

Decimal 16749958 Background



This preview shows how black text looks on a background with the Decimal color 16749958.



This preview shows how white text looks on a background with the Decimal color 16749958.

Color Blindness Simulation

Color vision deficiency is a very complex topic, and I could not describe the different causes any better than Wikipedia does, so if you want to learn more, you should check out their [article about color blindness](#).

Dichromacy



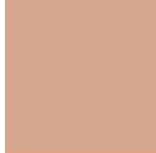


Tritanopia
16749469

Trichromacy



Original Color
16749958



Protanomaly
14002062



Deuteranomaly
14918531

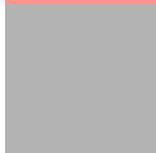


Tritanomaly
16749717

Monochromacy



Original Color
16749958



Achromatopsia
11776947



Achromatomaly
13609123

CSS Examples

Text

The CSS property to change the color of the text to Decimal 16749958 is called "color". The color property can be set on classes, ids or directly on the HTML element.

This example shows how text in the color #FF9586 looks like.

```
.text, #text, p{  
    color:#FF9586  
}
```

If you want to add a text shadow in that color use the text-shadow property, you can generate a text shadow directly with our [CSS Text Shadow Generator](#).

Here you see how black text with a 4 pixel #FF9586 colored shadow looks like.

```
.shadow{ text-shadow: 4px 4px 2px #FF9586
}
```

Border

The CSS property to change the border of an element to Decimal 16749958 is called "border". The border property can be set on classes, ids or directly on the HTML element.

This example shows the color as border, it can be applied via the CSS property "border" or "border-color".

```
.border, #border, table{ border:4px solid
#FF9586 }
```

If only the border color should be changed use the property `border-color`.

```
.border{ border-color:#FF9586 }
```

If you want to add a box shadow in that color use:

Here you see how a box with a 4 pixel #FF9586 colored shadow looks like.

```
.boxshadow{ -moz-box-shadow:4px 4px 4px  
4px #FF9586; -webkit-box-shadow:4px 4px  
4px 4px #FF9586; box-shadow:4px 4px 4px  
4px #FF9586 }
```

Background

The CSS property to change the background color of an element to Decimal 16749958 is called "background". The background property can be set on classes, ids or directly on the HTML element.

```
.background, #background, body{  
background:#FF9586 }
```

If only the background color should be changed can be used:

```
.background{ background-color:#FF9586 }
```

This example shows the color as background, it is applied via the CSS property "background".

To optimize and compress your CSS code, you can use our [online CSS compressor and optimizer](#) based on csstidy. If you want to create a linear or radial gradient as background or border, check our [CSS Gradient Generator](#).

Hey! You found this booklet interesting? Support Converting Colors with the new Membership Option!

The pro membership hides all ads, plus gives you double the colors in the color bucket, and more awesome pro features!

[Learn more, Memberships starting at \\$2.50/m!](#)

**Follow me
on Twitter!**

@ConvertingColor