

Converting Colors

Decimal(16751255)

Have a look what the booklet for
Decimal(16751255) contains.

Decimal(16751255)	3
<i>Conversions</i>	4
<i>Details</i>	6
<i>Harmonies</i>	11
<i>Previews</i>	23
<i>Color Blindness Simulation</i>	26
<i>CSS Examples</i>	29

Color

Decimal(16751255)

Conversions

Conversions Part 1

Format	Color
Hex	FF9A97
RGB	255, 154, 151
RGB Percent	100%, 60%, 59%
CMY	0.0000, 0.3961, 0.4078
CMYK	0.00, 0.40, 0.41, 0.00
HSL	2°, 100%, 80%
HSV	2°, 41%, 100%
XYZ	58.3815, 46.6056, 35.1969
YIQ	183.8570, 61.1590, 20.4790

Conversions

Conversions Part 2

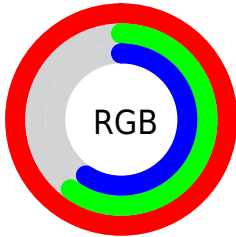
Format	Color
R_{YB}	255, 154, 151
Decimal	16751255
CIE Lab	73.94, 37.37, 17.80
CIE LCh	74, 41.392, 25.475
Yxy	46.6056, 0.4165, 0.3325
Android (android.graphics.Color)	4294941335 (0xFFFF9A97)
YUV	183.8570, -16.1985, 62.3924
Hunter-Lab	68.2683, 33.1798, 17.2198

Details

The Decimal color **16751255** is a light color, and the websafe version is hex **FF9999**. A complement of this color would be **9960703**, and the grayscale version is **12105912**.

A 20% lighter version of the original color is **16765389**, and **12805476** is the 20% darker color. If you saturate the color by 10%, you get **16744830**, and if you desaturate by 10%, it is **16757681**.

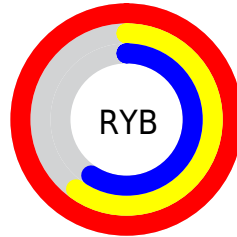
Distribution



Red (100%)

Green (60%)

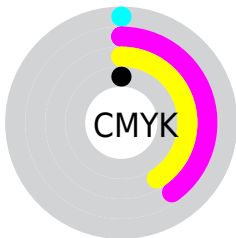
Blue (59%)



Red (100%)

Yellow (60%)

Blue (59%)

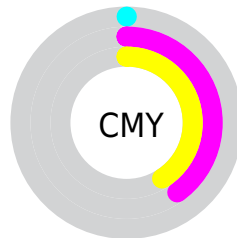


Cyan (0%)

Magenta (40%)

Yellow (41%)

Black (0%)



Cyan (0%)

Magenta (40%)

Yellow (41%)

Brightness & Saturation Gradients

These gradients show how the Decimal color 16751255 changes by changing the brightness by 10 percent. The first figure shows a shift by +10% for each color and the second figure -10%.

Similar to the brightness gradients but the following saturation gradients show a change of the Decimal color 16751255 by changing the saturation by 10% instead.

 16751255

 16751255

16777215

 14778237

 16765389

 12805476

 16772841

 10898508

 9057078

 7215392

 5373962

 3670016

 1572865

 0

 16751255

 16751255

 16744830

 16757681

 16738404

 16764106

 16732235

 16770276

 16725809

 16776701

 16719384

16777215

 16713472

Harmonies

Analogous

The Analogous color harmony consists of three colors that are next to each other on the color wheel.



16423101



16751255



15836280

Triad

The Triadic color harmony groups three colors that are evenly spaced from another and form a triangle on the color wheel.



16751255



8504713



7519231

Complementary

The Complementary color scheme is a pair of colors which are on the opposite of each other on the color wheel.



16751255



9960703

Split Complementary

Split-complementary colors differ from the complementary color scheme. The scheme consists of three colors, the original color and two neighbors of the complement color.



2147827



16751255



4967086

Square

The Square scheme is like the rectangle color scheme, but the four colors are evenly spaced on the color wheel.



16751255



11386224



51669



11710202

Rectangle

The Rectangle color scheme consists of four colors that form a rectangle on the color wheel.



16751255



14658924



51669



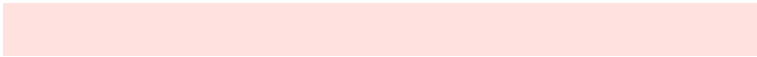
5947391

Sweetspot

The Sweet Spot groups the original color and five complimentary colors.



16751255



16769504



16750589



8416878



0



8421504

Same Dimension

The Same Dimension uses a secret algorithm to generate beautiful new colors.



16751255



16746114



16764311



8418163



12518912



4194816

Inverse Universe

The Inverse Universe completely reimagines the original color for something new.



9960703



8584191



9947647



7569280



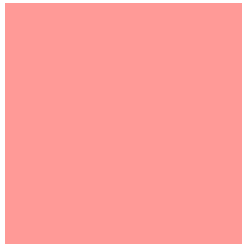
47807



15936

Previews

White Background



This preview shows how the Decimal color 16751255 looks on a white background.

Color Contrast Check

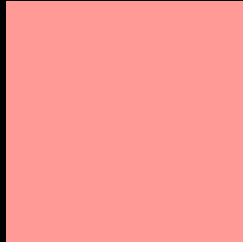
Large Text (above 18pt) WCAG AA × Fail

Any Text WCAG AA × Fail

Large Text (above 18pt) WCAG AAA × Fail

Any Text WCAG AAA × Fail

Black Background



This preview shows how the Decimal color 16751255 looks on a black background.

Color Contrast Check

Large Text (above 18pt) WCAG AA ✓ Pass

Any Text WCAG AA ✓ Pass

Large Text (above 18pt) WCAG AAA ✓ Pass

Any Text WCAG AAA ✓ Pass

If you want to check with other color combinations, try the [Color Contrast Checker](#).

Decimal 16751255 Background



This preview shows how black text looks on a background with the Decimal color 16751255.



This preview shows how white text looks on a background with the Decimal color 16751255.

Color Blindness Simulation

Color vision deficiency is a very complex topic, and I could not describe the different causes any better than Wikipedia does, so if you want to learn more, you should check out their [article about color blindness](#).

Dichromacy



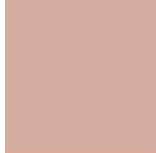


Tritanopia
16751012

Trichromacy



Original Color
16751255



Protanomaly
14003360



Deuteranomaly
14985108



Tritanomaly
16751007

Monochromacy



Original Color
16751255



Achromatopsia
12105912



Achromatomaly
13807020

CSS Examples

Text

The CSS property to change the color of the text to Decimal 16751255 is called "color". The color property can be set on classes, ids or directly on the HTML element.

This example shows how text in the color #FF9A97 looks like.

```
.text, #text, p{  
    color:#FF9A97  
}
```

If you want to add a text shadow in that color use the text-shadow property, you can generate a text shadow directly with our [CSS Text Shadow Generator](#).

Here you see how black text with a 4 pixel #FF9A97 colored shadow looks like.

```
.shadow{ text-shadow: 4px 4px 2px #FF9A97  
}
```

Border

The CSS property to change the border of an element to Decimal 16751255 is called "border". The border property can be set on classes, ids or directly on the HTML element.

This example shows the color as border, it can be applied via the CSS property "border" or "border-color".

```
.border, #border, table{ border:4px solid  
#FF9A97 }
```

If only the border color should be changed use the property `border-color`.

```
.border{ border-color:#FF9A97 }
```

If you want to add a box shadow in that color use:

Here you see how a box with a 4 pixel #FF9A97 colored shadow looks like.

```
.boxshadow{ -moz-box-shadow:4px 4px 4px  
4px #FF9A97; -webkit-box-shadow:4px 4px  
4px 4px #FF9A97; box-shadow:4px 4px 4px  
4px #FF9A97 }
```

Background

The CSS property to change the background color of an element to Decimal 16751255 is called "background". The background property can be set on classes, ids or directly on the HTML element.

```
.background, #background, body{  
background:#FF9A97 }
```

If only the background color should be changed can be used:

```
.background{ background-color:#FF9A97 }
```

This example shows the color as background, it is applied via the CSS property "background".

To optimize and compress your CSS code, you can use our [online CSS compressor and optimizer](#) based on csstidy. If you want to create a linear or radial gradient as background or border, check our [CSS Gradient Generator](#).

Hey! You found this booklet interesting? Support Converting Colors with the new Membership Option!

The pro membership hides all ads, plus gives you double the colors in the color bucket, and more awesome pro features!

[Learn more, Memberships starting at \\$2.50/m!](#)

**Follow me
on Twitter!**

@ConvertingColor