

Converting Colors

Decimal(16752304)

Have a look what the booklet for
Decimal(16752304) contains.

Decimal(16752304)	3
<i>Conversions</i>	4
<i>Details</i>	6
<i>Harmonies</i>	11
<i>Previews</i>	23
<i>Color Blindness Simulation</i>	26
<i>CSS Examples</i>	29

Color

Decimal(16752304)

Conversions

Conversions Part 1

Format	Color
Hex	FF9EB0
RGB	255, 158, 176
RGB Percent	100%, 62%, 69%
CMY	0.0000, 0.3804, 0.3098
CMYK	0.00, 0.38, 0.31, 0.00
HSL	349°, 100%, 81%
HSV	349°, 38%, 100%
XYZ	61.3033, 48.8483, 47.2719
YIQ	189.0550, 52.0340, 26.1620

Conversions

Conversions Part 2

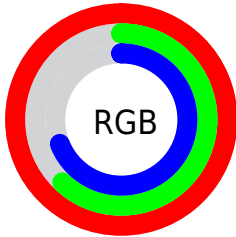
Format	Color
R _Y B	255, 158, 176
Decimal	16752304
CIE Lab	75.36, 38.22, 6.07
CIE LCh	75, 38.701, 9.024
Yxy	48.8483, 0.3894, 0.3103
Android (android.graphics.Color)	4294942384 (0xFFFF9EB0)
YUV	189.0550, -6.4361, 57.8338
Hunter-Lab	69.8916, 34.2558, 8.8227

Details

The Decimal color **16752304** is a light color, and the websafe version is hex **FF9999**. A complement of this color would be **10420205**, and the grayscale version is **12434877**.

A 20% lighter version of the original color is **16766696**, and **12872060** is the 20% darker color. If you saturate the color by 10%, you get **16745627**, and if you desaturate by 10%, it is **16758981**.

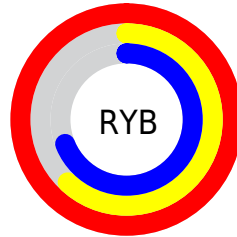
Distribution



Red (100%)

Green (62%)

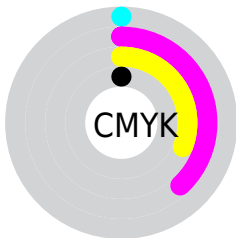
Blue (69%)



Red (100%)

Yellow (62%)

Blue (69%)

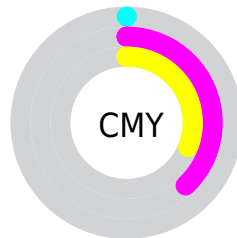


Cyan (0%)

Magenta (38%)

Yellow (31%)

Black (0%)



Cyan (0%)

Magenta (38%)

Yellow (31%)

Brightness & Saturation Gradients

These gradients show how the Decimal color 16752304 changes by changing the brightness by 10 percent. The first figure shows a shift by +10% for each color and the second figure -10%.

Similar to the brightness gradients but the following saturation gradients show a change of the Decimal color 16752304 by changing the saturation by 10% instead.

 16752304

 16752304

16777215

 14779285

 16766696

 12872060

 16774143

 10964835

 9123403

 7347253

 5570592

 3866631

 2097153

 0

 16752304

 16752304

 16745627

 16758981

 16739206

 16765402

 16732786

 16772078

 16726109

16777215

 16719688

 16713011

 16711727

Harmonies

Analogous

The Analogous color harmony consists of three colors that are next to each other on the color wheel.



15704788



16752304



16491406

Triad

The Triadic color harmony groups three colors that are evenly spaced from another and form a triangle on the color wheel.



16752304



10536321



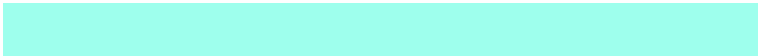
6079739

Complementary

The Complementary color scheme is a pair of colors which are on the opposite of each other on the color wheel.



16752304



10420205

Split Complementary

Split-complementary colors differ from the complementary color scheme. The scheme consists of three colors, the original color and two neighbors of the complement color.



3001317



16752304



7654303

Square

The Square scheme is like the rectangle color scheme, but the four colors are evenly spaced on the color wheel.



16752304



13089650



4574660



10009087

Rectangle

The Rectangle color scheme consists of four colors that form a rectangle on the color wheel.



16752304



15707005



4574660



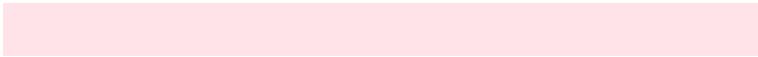
4835318

Sweetspot

The Sweet Spot groups the original color and five complimentary colors.



16752304



16770024



15507199



8417138



0



8421504

Same Dimension

The Same Dimension uses a secret algorithm to generate beautiful new colors.



16752304



16747167



16759710



8418165



12517411



4194316

Inverse Universe

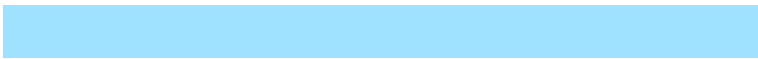
The Inverse Universe completely reimagines the original color for something new.



16752304



16747167



10412799



8418165



12517411



4194316

Previews

White Background



This preview shows how the Decimal color 16752304 looks on a white background.

Color Contrast Check

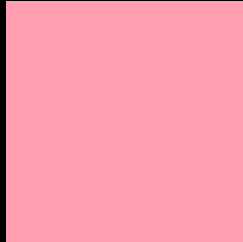
Large Text (above 18pt) WCAG AA × Fail

Any Text WCAG AA × Fail

Large Text (above 18pt) WCAG AAA × Fail

Any Text WCAG AAA × Fail

Black Background



This preview shows how the Decimal color 16752304 looks on a black background.

Color Contrast Check

Large Text (above 18pt) WCAG AA ✓ Pass

Any Text WCAG AA ✓ Pass

Large Text (above 18pt) WCAG AAA ✓ Pass

Any Text WCAG AAA ✓ Pass

If you want to check with other color combinations, try the [Color Contrast Checker](#).

Decimal 16752304 Background



This preview shows how black text looks on a background with the Decimal color 16752304.




This preview shows how white text looks on a background with the Decimal color 16752304.

Color Blindness Simulation

Color vision deficiency is a very complex topic, and I could not describe the different causes any better than Wikipedia does, so if you want to learn more, you should check out their [article about color blindness](#).

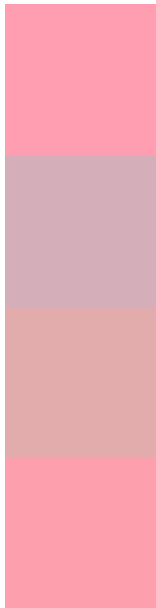
Dichromacy





Tritanopia
16687019

Trichromacy



Original Color
16752304

Protanomaly
13938618

Deuteranomaly
14855341

Tritanomaly
16687021

Monochromacy



Original Color
16752304

Achromatopsia
12434877

Achromatomaly
14004920

CSS Examples

Text

The CSS property to change the color of the text to Decimal 16752304 is called "color". The color property can be set on classes, ids or directly on the HTML element.

This example shows how text in the color #FF9EB0 looks like.

```
.text, #text, p{  
    color:#FF9EB0  
}
```

If you want to add a text shadow in that color use the text-shadow property, you can generate a text shadow directly with our [CSS Text Shadow Generator](#).

Here you see how black text with a 4 pixel #FF9EB0 colored shadow looks like.

```
.shadow{ text-shadow: 4px 4px 2px #FF9EB0
}
```

Border

The CSS property to change the border of an element to Decimal 16752304 is called "border". The border property can be set on classes, ids or directly on the HTML element.

This example shows the color as border, it can be applied via the CSS property "border" or "border-color".

```
.border, #border, table{ border:4px solid
#FF9EB0 }
```

If only the border color should be changed use the property `border-color`.

```
.border{ border-color:#FF9EB0 }
```

If you want to add a box shadow in that color use:

Here you see how a box with a 4 pixel #FF9EB0 colored shadow looks like.

```
.boxshadow{ -moz-box-shadow:4px 4px 4px  
4px #FF9EB0; -webkit-box-shadow:4px 4px  
4px 4px #FF9EB0; box-shadow:4px 4px 4px  
4px #FF9EB0 }
```

Background

The CSS property to change the background color of an element to Decimal 16752304 is called "background". The background property can be set on classes, ids or directly on the HTML element.

```
.background, #background, body{  
background:#FF9EB0 }
```

If only the background color should be changed can be used:

```
.background{ background-color:#FF9EB0 }
```

This example shows the color as background, it is applied via the CSS property "background".

To optimize and compress your CSS code, you can use our [online CSS compressor and optimizer](#) based on csstidy. If you want to create a linear or radial gradient as background or border, check our [CSS Gradient Generator](#).

Hey! You found this booklet interesting? Support Converting Colors with the new Membership Option!

The pro membership hides all ads, plus gives you double the colors in the color bucket, and more awesome pro features!

[Learn more, Memberships starting at \\$2.50/m!](#)

**Follow me
on Twitter!**

@ConvertingColor