

Converting Colors

Decimal(16752779)

Have a look what the booklet for
Decimal(16752779) contains.

Decimal(16752779)	3
<i>Conversions</i>	4
<i>Details</i>	6
<i>Harmonies</i>	11
<i>Previews</i>	23
<i>Color Blindness Simulation</i>	26
<i>CSS Examples</i>	29

Color

Decimal(16752779)

Conversions

Conversions Part 1

Format	Color
Hex	FFA08B
RGB	255, 160, 139
RGB Percent	100%, 63%, 55%
CMY	0.0000, 0.3725, 0.4549
CMYK	0.00, 0.37, 0.45, 0.00
HSL	11°, 100%, 77%
HSV	11°, 45%, 100%
XYZ	58.4710, 48.2657, 30.6605
YIQ	186.0110, 63.3610, 13.6090

Conversions

Conversions Part 2

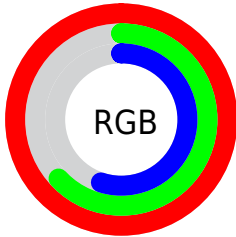
Format	Color
R _Y B	255, 165, 139
Decimal	16752779
CIE Lab	74.99, 33.04, 25.79
CIE LCh	75, 41.912, 37.982
Yxy	48.2657, 0.4256, 0.3513
Android (android.graphics.Color)	4294942859 (0xFFFFA08B)
YUV	186.0110, -23.1764, 60.5034
Hunter-Lab	69.4735, 28.6523, 22.4652

Details

The Decimal color **16752779** is a light color, and the websafe version is hex **FF9999**. A complement of this color would be **9169663**, and the grayscale version is **12237498**.

A 20% lighter version of the original color is **16767169**, and **12807001** is the 20% darker color. If you saturate the color by 10%, you get **16747378**, and if you desaturate by 10%, it is **16758180**.

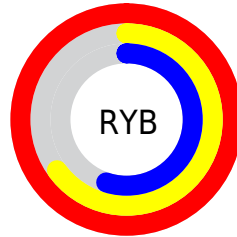
Distribution



Red (100%)

Green (63%)

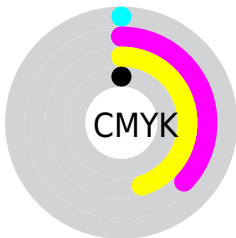
Blue (55%)



Red (100%)

Yellow (65%)

Blue (55%)

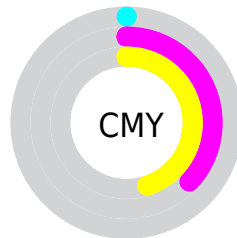


Cyan (0%)

Magenta (37%)

Yellow (45%)

Black (0%)



Cyan (0%)

Magenta (37%)

Yellow (45%)

Brightness & Saturation Gradients

These gradients show how the Decimal color 16752779 changes by changing the brightness by 10 percent. The first figure shows a shift by +10% for each color and the second figure -10%.

Similar to the brightness gradients but the following saturation gradients show a change of the Decimal color 16752779 by changing the saturation by 10% instead.

 16752779

 16752779

16777215

 14779761

 16767169

 12807001

 16774365

 10900033

 16777209

 8993323

 7151894

 5375488

 3604480

 1572865

 0

 16752779

 16752779

 16747378

 16758180

 16741976

 16763582

 16736574

 16768984

 16731173

 16774385

 16726027

16777215

 16723456

Harmonies

Analogous

The Analogous color harmony consists of three colors that are next to each other on the color wheel.



16751280



16752779



15379570

Triad

The Triadic color harmony groups three colors that are evenly spaced from another and form a triangle on the color wheel.



16752779



7195546



9550335

Complementary

The Complementary color scheme is a pair of colors which are on the opposite of each other on the color wheel.



16752779



9169663

Split Complementary

Split-complementary colors differ from the complementary color scheme. The scheme consists of three colors, the original color and two neighbors of the complement color.



4769023



16752779



3132866

Square

The Square scheme is like the rectangle color scheme, but the four colors are evenly spaced on the color wheel.



16752779



10404986



52199



13282294

Rectangle

The Rectangle color scheme consists of four colors that form a rectangle on the color wheel.



16752779



13940075



52199



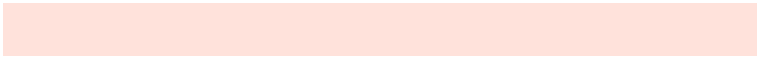
8044031

Sweetspot

The Sweet Spot groups the original color and five complimentary colors.



16752779



16769755



16747500



8416874



0



8421504

Same Dimension

The Same Dimension uses a secret algorithm to generate beautiful new colors.



16752779



16747635



16767115



8418675



12526336



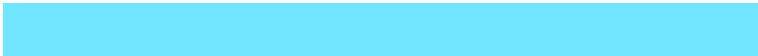
4197376

Inverse Universe

The Inverse Universe completely reimagines the original color for something new.



9169663



7595775



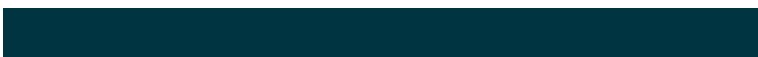
9155327



7568768



40383



13376

Previews

White Background



This preview shows how the Decimal color 16752779 looks on a white background.

Color Contrast Check

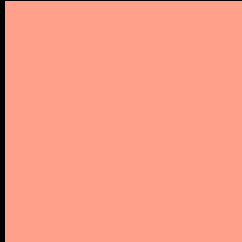
Large Text (above 18pt) WCAG AA × Fail

Any Text WCAG AA × Fail

Large Text (above 18pt) WCAG AAA × Fail

Any Text WCAG AAA × Fail

Black Background



This preview shows how the Decimal color 16752779 looks on a black background.

Color Contrast Check

Large Text (above 18pt) WCAG AA ✓ Pass

Any Text WCAG AA ✓ Pass

Large Text (above 18pt) WCAG AAA ✓ Pass

Any Text WCAG AAA ✓ Pass

If you want to check with other color combinations, try the [Color Contrast Checker](#).

Decimal 16752779 Background



This preview shows how black text looks on a background with the Decimal color 16752779.



This preview shows how white text looks on a background with the Decimal color 16752779.

Color Blindness Simulation

Color vision deficiency is a very complex topic, and I could not describe the different causes any better than Wikipedia does, so if you want to learn more, you should check out their [article about color blindness](#).

Dichromacy



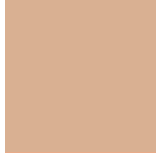


Tritanopia
16752040

Trichromacy



Original Color
16752779



Protanomaly
14266514



Deuteranomaly
15248265

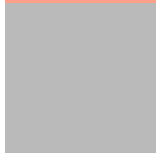


Tritanomaly
16752285

Monochromacy



Original Color
16752779



Achromatopsia
12237498



Achromatomaly
13873577

CSS Examples

Text

The CSS property to change the color of the text to Decimal 16752779 is called "color". The color property can be set on classes, ids or directly on the HTML element.

This example shows how text in the color #FFA08B looks like.

```
.text, #text, p{  
    color:#FFA08B  
}
```

If you want to add a text shadow in that color use the text-shadow property, you can generate a text shadow directly with our [CSS Text Shadow Generator](#).

Here you see how black text with a 4 pixel #FFA08B colored shadow looks like.

```
.shadow{ text-shadow: 4px 4px 2px #FFA08B
}
```

Border

The CSS property to change the border of an element to Decimal 16752779 is called "border". The border property can be set on classes, ids or directly on the HTML element.

This example shows the color as border, it can be applied via the CSS property "border" or "border-color".

```
.border, #border, table{ border:4px solid
#FFA08B }
```

If only the border color should be changed use the property `border-color`.

```
.border{ border-color:#FFA08B }
```

If you want to add a box shadow in that color use:

Here you see how a box with a 4 pixel #FFA08B colored shadow looks like.

```
.boxshadow{ -moz-box-shadow:4px 4px 4px  
4px #FFA08B; -webkit-box-shadow:4px 4px  
4px 4px #FFA08B; box-shadow:4px 4px 4px  
4px #FFA08B }
```

Background

The CSS property to change the background color of an element to Decimal 16752779 is called "background". The background property can be set on classes, ids or directly on the HTML element.

```
.background, #background, body{  
background:#FFA08B }
```

If only the background color should be changed can be used:

```
.background{ background-color:#FFA08B }
```

This example shows the color as background, it is applied via the CSS property "background".

To optimize and compress your CSS code, you can use our [online CSS compressor and optimizer](#) based on csstidy. If you want to create a linear or radial gradient as background or border, check our [CSS Gradient Generator](#).

Hey! You found this booklet interesting? Support Converting Colors with the new Membership Option!

The pro membership hides all ads, plus gives you double the colors in the color bucket, and more awesome pro features!

[Learn more, Memberships starting at \\$2.50/m!](#)

**Follow me
on Twitter!**

@ConvertingColor